

Converting Colors

CIELCh(86, 10.377, 17.255)

Have a look what the booklet for
CIELCh(86, 10.377, 17.255) contains.

CIELCh(86, 10.377, 17.255)	3
<i>Conversions</i>	4
<i>Details</i>	6
<i>Harmonies</i>	11
<i>Previews</i>	20
<i>Color Blindness Simulation</i>	23
<i>CSS Examples</i>	26

Color

CIELCh(86, 10.377, 17.255)

Conversions

Conversions Part 1

Format	Color
Hex	EDD1D2
RGB	237, 209, 210
RGB Percent	93%, 82%, 82%
CMY	0.0721, 0.1819, 0.1780
CMYK	0.00, 0.12, 0.11, 0.07
HSL	358°, 43%, 87%
HSV	358°, 12%, 93%
XYZ	69.0886, 67.9871, 70.2070
YIQ	217.4860, 16.3670, 6.2470

Conversions

Conversions Part 2

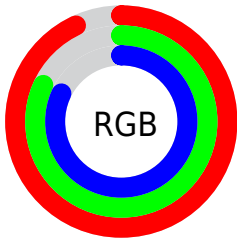
Format	Color
R _Y B	237, 209, 210
Decimal	15585746
CIE Lab	86.00, 9.91, 3.08
CIE LCh	86, 10.377, 17.255
Yxy	67.9871, 0.3333, 0.3280
Android (android.graphics.Color)	4293775826 (0xFFEDD1D2)
YUV	217.4860, -3.6906, 17.1138
Hunter-Lab	82.4543, 5.2704, 7.2346

Details

The CIELCh color **86, 10.377, 17.255** is a light color, and the websafe version is hex **FFCCCC**. A complement of this color would be **92, 9.667, 195.755**, and the grayscale version is **87, 0.010, 296.813**.

A 20% lighter version of the original color is **100, 0.012, 296.813**, and **66, 10.223, 17.245** is the 20% darker color. If you saturate the color by 10%, you get **80, 19.869, 18.245**, and if you desaturate by 10%, it is **92, 1.546, 16.170**.

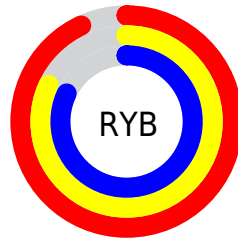
Distribution



Red (93%)

Green (82%)

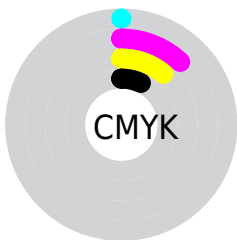
Blue (82%)



Red (93%)

Yellow (82%)

Blue (82%)

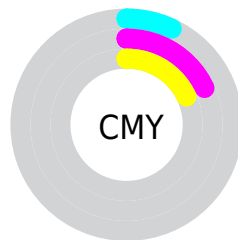


Cyan (0%)

Magenta (12%)

Yellow (11%)

Black (7%)



Cyan (7%)

Magenta (18%)

Yellow (18%)


Brightness & Saturation Gradients

These gradients show how the CIELCh color 86, 10.377, 17.255 changes by changing the brightness by 10 percent. The first figure shows a shift by +10% for each color and the second figure -10%.

Similar to the brightness gradients but the following saturation gradients show a change of the CIELCh color 86, 10.377, 17.255 by changing the saturation by 10% instead.

 86, 10.377, 17.255

 86, 10.377, 17.255

 100, 10.377,
17.255

 76, 10.377, 17.255

 66, 10.377, 17.255

 56, 10.377, 17.255

 46, 10.377, 17.255

 36, 10.377, 17.255

 26, 10.377, 17.255

 16, 10.377, 17.255

 6, 10.377, 17.255

 0, 10.377, 17.255

86, 10.377, 17.255

86, 10.377, 17.255

80, 19.869, 18.245

92, 1.546, 16.170

74, 30.010, 19.467

99, 6.309, 199.111

68, 40.714, 21.034

63, 51.798, 23.059

58, 62.975, 25.662

54, 73.867, 28.922

52, 84.007, 32.750

50, 92.588, 36.630

49, 97.403, 38.941

Harmonies

Complementary

The Complementary color scheme is a pair of colors which are on the opposite of each other on the color wheel.



86, 10.377, 17.255



92, 9.667, 195.755

Rectangle

The Rectangle color scheme consists of four colors that form a rectangle on the color wheel.



86, 10.377, 17.255



86, 10.377, 67.255



86, 10.377, 197.255



86, 10.377, 247.255

Sweetspot

The Sweet Spot groups the original color and five complimentary colors.



86, 10.375, 17.266



97, 3.622, 16.541



87, 17.484, 323.696



51, 2.581, 16.624



0, 0.000, 0.000



53, 0.007, 296.813

Same Dimension

The Same Dimension uses a secret algorithm to generate beautiful new colors.



86, 10.375, 17.266



90, 13.158, 17.469



89, 8.668, 68.409



46, 4.905, 17.057



38, 79.285, 38.539



7, 28.384, 21.272

Inverse Universe

The Inverse Universe completely reimagines the original color for something new.



86, 10.375, 17.266



90, 13.158, 17.469



88, 8.338, 251.366



46, 4.905, 17.057



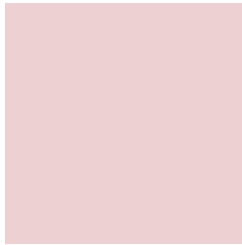
38, 79.285, 38.539



7, 28.384, 21.272

Previews

White Background



This preview shows how the CIELCh color 86, 10.377, 17.255 looks on a white background.

Color Contrast Check

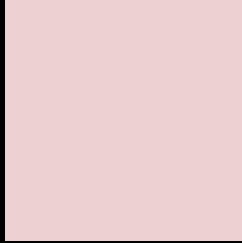
Large Text (above 18pt) WCAG AA × Fail

Any Text WCAG AA × Fail

Large Text (above 18pt) WCAG AAA × Fail

Any Text WCAG AAA × Fail

Black Background



This preview shows how the CIELCh color 86, 10.377, 17.255 looks on a black background.

Color Contrast Check

Large Text (above 18pt) WCAG AA ✓ Pass

Any Text WCAG AA ✓ Pass

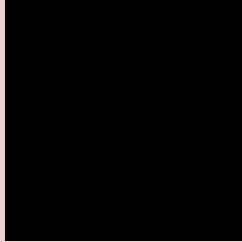
Large Text (above 18pt) WCAG AAA ✓ Pass

Any Text WCAG AAA ✓ Pass

If you want to check with other color combinations, try the [Color Contrast Checker](#).

CIELCh 86, 10.377, 17.255

Background



This preview shows how black text looks on a background with the CIELCh color 86, 10.377, 17.255.



This preview shows how white text looks on a background with the CIELCh color 86, 10.377, 17.255.

Color Blindness Simulation

Color vision deficiency is a very complex topic, and I could not describe the different causes any better than Wikipedia does, so if you want to learn more, you should check out their [article about color blindness](#).

Dichromacy





Tritanopia
86, 14.032, 343.858

Trichromacy



Original Color
86, 10.377, 17.255

Protanomaly
86, 4.752, 19.634

Deuteranomaly
86, 10.784, 14.627

Tritanomaly
86, 11.822, 354.061

Monochromacy



Original Color
86, 10.377, 17.255

Achromatopsia
87, 0.010, 296.813

Achromatomaly
86, 3.640, 19.512

CSS Examples

Text

The CSS property to change the color of the text to CIELCh 86, 10.377, 17.255 is called "color". The color property can be set on classes, ids or directly on the HTML element.

This example shows how text in the color `rgb(237, 209, 210)` looks like.

```
.text, #text, p{  
    color:rgb(237, 209, 210)  
}
```

If you want to add a text shadow in that color use the text-shadow property, you can generate a text shadow directly with our [CSS Text Shadow Generator](#).

Here you see how black text with a 4 pixel rgb(237, 209, 210) colored shadow looks like.

```
.shadow{ text-shadow: 4px 4px 2px rgb(237, 209, 210) }
```

Border

The CSS property to change the border of an element to CIELCh 86, 10.377, 17.255 is called "border". The border property can be set on classes, ids or directly on the HTML element.

This example shows the color as border, it can be applied via the CSS property "border" or "border-color".

```
.border, #border, table{ border:4px solid rgb(237, 209, 210) }
```

If only the border color should be changed use the property border-color.

```
.border{ border-color:rgb(237, 209, 210) }
```

If you want to add a box shadow in that color use:

Here you see how a box with a 4 pixel rgb(237, 209, 210) colored shadow looks like.

```
.boxshadow{ -moz-box-shadow:4px 4px 4px  
4px rgb(237, 209, 210); -webkit-box-  
shadow:4px 4px 4px 4px rgb(237, 209, 210);  
box-shadow:4px 4px 4px 4px rgb(237, 209,  
210) }
```

Background

The CSS property to change the background color of an element to CIELCh 86, 10.377, 17.255 is called "background". The background property can be set on classes, ids or directly on the HTML element.

```
.background, #background, body{  
background: rgb(237, 209, 210) }
```

If only the background color should be changed can be used:

```
.background{ background-color: rgb(237,  
209, 210) }
```

This example shows the color as background, it is applied via the CSS property "background".

To optimize and compress your CSS code, you can use our [online CSS compressor and optimizer](#) based on csstidy. If you want to create a linear or radial gradient as background or border, check our [CSS Gradient Generator](#).

Hey! You found this booklet interesting? Support Converting Colors with the new Membership Option!

The pro membership hides all ads, plus gives you double the colors in the color bucket, and more awesome pro features!

[Learn more, Memberships starting at \\$2.50/m!](#)

**Follow me
on Twitter!**

@ConvertingColor