

Converting Colors

CIELCh(86, 10.689, 45.488)

Have a look what the booklet for
CIELCh(86, 10.689, 45.488) contains.

CIELCh(86, 10.509, 46.461)	3
<i>Conversions</i>	4
<i>Details</i>	6
<i>Harmonies</i>	11
<i>Previews</i>	20
<i>Color Blindness Simulation</i>	23
<i>CSS Examples</i>	26

Color

CIELCh(86, 10.509, 46.461)

Conversions

Conversions Part 1

Format	Color
Hex	EBD2C9
RGB	235, 210, 201
RGB Percent	92%, 82%, 79%
CMY	0.0783, 0.1764, 0.2117
CMYK	0.00, 0.11, 0.14, 0.08
HSL	16°, 46%, 85%
HSV	16°, 14%, 92%
XYZ	67.8645, 67.9871, 64.8170
YIQ	216.4490, 17.7890, 2.5010

Conversions

Conversions Part 2

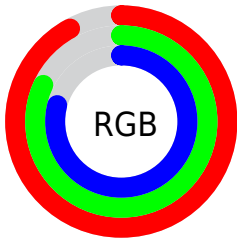
Format	Color
R _Y B	235, 213, 201
Decimal	15454921
CIE Lab	86.00, 7.24, 7.62
CIE LCh	86, 10.509, 46.461
Yxy	67.9871, 0.3382, 0.3388
Android (android.graphics.Color)	4293645001 (0xFFEBD2C9)
YUV	216.4490, -7.6164, 16.2692
Hunter-Lab	82.4543, 2.6205, 11.1103

Details

The CIELCh color **86, 10.509, 46.461** is a light color, and the websafe version is hex **FFCCCC**. A complement of this color would be **88, 9.638, 228.215**, and the grayscale version is **87, 0.010, 296.813**.

A 20% lighter version of the original color is **100, 0.012, 296.813**, and **66, 10.483, 48.237** is the 20% darker color. If you saturate the color by 10%, you get **81, 18.501, 46.116**, and if you desaturate by 10%, it is **91, 3.118, 46.809**.

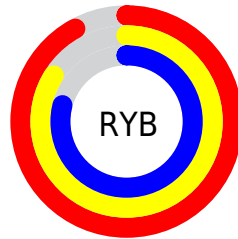
Distribution



Red (92%)

Green (82%)

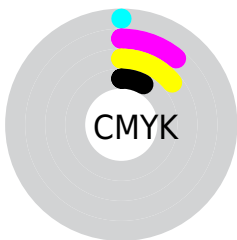
Blue (79%)



Red (92%)

Yellow (84%)

Blue (79%)

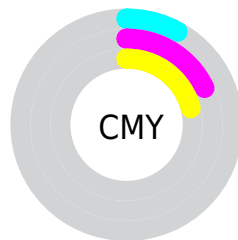


Cyan (0%)

Magenta (11%)

Yellow (14%)

Black (8%)



Cyan (8%)

Magenta (18%)

Yellow (21%)


Brightness & Saturation Gradients

These gradients show how the CIELCh color 86, 10.509, 46.461 changes by changing the brightness by 10 percent. The first figure shows a shift by +10% for each color and the second figure -10%.

Similar to the brightness gradients but the following saturation gradients show a change of the CIELCh color 86, 10.509, 46.461 by changing the saturation by 10% instead.

 86, 10.509, 46.461

 86, 10.509, 46.461

 100, 10.509,
46.461

 76, 10.509, 46.461

 66, 10.509, 46.461

 56, 10.509, 46.461

 46, 10.509, 46.461

 36, 10.509, 46.461

 26, 10.509, 46.461

 16, 10.509, 46.461

 6, 10.509, 46.461

 0, 10.509, 46.461

86, 10.509, 46.461

86, 10.509, 46.461

81, 18.501, 46.116

91, 3.118, 46.809

77, 27.145, 45.851

96, 3.729, 227.681

72, 36.470, 45.716

99, 6.844, 199.069

68, 46.460, 45.736

64, 57.017, 45.910

60, 67.868, 46.178

57, 78.372, 46.334

54, 87.171, 45.879

53, 91.037, 45.390

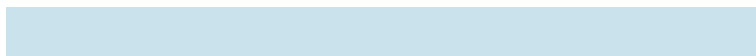
Harmonies

Complementary

The Complementary color scheme is a pair of colors which are on the opposite of each other on the color wheel.



86, 10.509, 46.461



88, 9.638, 228.215

Rectangle

The Rectangle color scheme consists of four colors that form a rectangle on the color wheel.



86, 10.509, 46.461



86, 10.509, 96.461



86, 10.509, 226.461



86, 10.509, 276.461

Sweetspot

The Sweet Spot groups the original color and five complimentary colors.



86, 10.508, 46.476



98, 2.978, 46.810



84, 18.174, 333.276



52, 2.123, 46.806



0, 0.000, 0.000



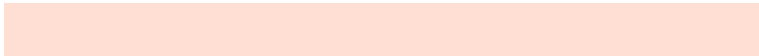
53, 0.007, 296.813

Same Dimension

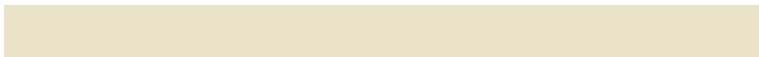
The Same Dimension uses a secret algorithm to generate beautiful new colors.



86, 10.508, 46.476



91, 13.331, 46.376



90, 13.554, 95.489



47, 4.040, 46.669



41, 74.420, 45.894



10, 24.017, 38.671

Inverse Universe

The Inverse Universe completely reimagines the original color for something new.



88, 9.638, 228.215



94, 12.019, 228.417



84, 13.691, 279.125



48, 3.825, 227.880



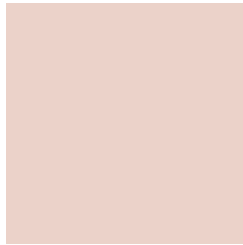
52, 35.990, 249.202



14, 14.798, 241.146

Previews

White Background



This preview shows how the CIELCh color 86, 10.509, 46.461 looks on a white background.

Color Contrast Check

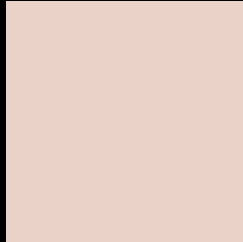
Large Text (above 18pt) WCAG AA × Fail

Any Text WCAG AA × Fail

Large Text (above 18pt) WCAG AAA × Fail

Any Text WCAG AAA × Fail

Black Background



This preview shows how the CIELCh color 86, 10.509, 46.461 looks on a black background.

Color Contrast Check

Large Text (above 18pt) WCAG AA ✓ Pass

Any Text WCAG AA ✓ Pass

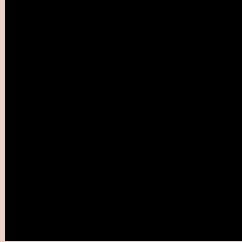
Large Text (above 18pt) WCAG AAA ✓ Pass

Any Text WCAG AAA ✓ Pass

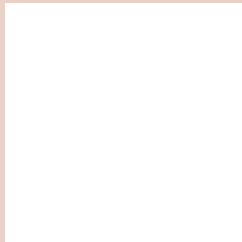
If you want to check with other color combinations, try the [Color Contrast Checker](#).

CIELCh 86, 10.509, 46.461

Background



This preview shows how black text looks on a background with the CIELCh color 86, 10.509, 46.461.

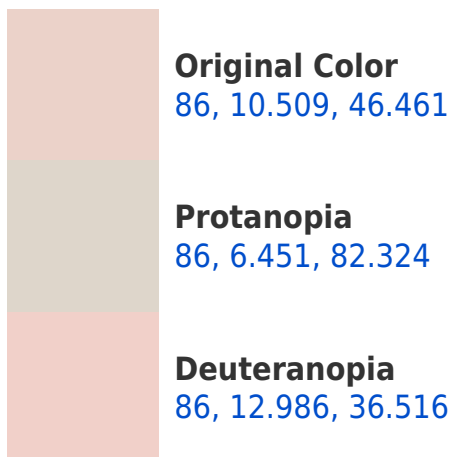


This preview shows how white text looks on a background with the CIELCh color 86, 10.509, 46.461.

Color Blindness Simulation

Color vision deficiency is a very complex topic, and I could not describe the different causes any better than Wikipedia does, so if you want to learn more, you should check out their [article about color blindness](#).

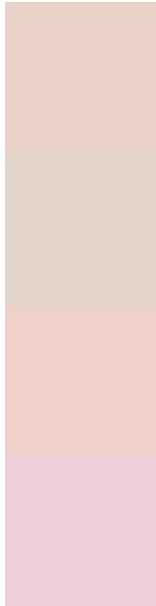
Dichromacy





Tritanopia
86, 14.032, 343.858

Trichromacy



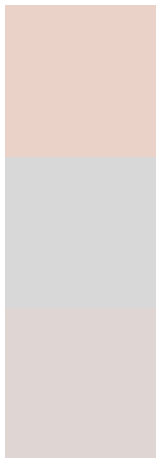
Original Color
86, 10.509, 46.461

Protanomaly
86, 7.751, 67.362

Deuteranomaly
86, 12.061, 40.321

Tritanomaly
86, 11.259, 1.297

Monochromacy



Original Color
86, 10.509, 46.461

Achromatopsia
86, 0.010, 296.813

Achromatomaly
86, 3.631, 45.025

CSS Examples

Text

The CSS property to change the color of the text to CIELCh 86, 10.509, 46.461 is called "color". The color property can be set on classes, ids or directly on the HTML element.

This example shows how text in the color `rgb(235, 210, 201)` looks like.

```
.text, #text, p{  
    color:rgb(235, 210, 201)  
}
```

If you want to add a text shadow in that color use the text-shadow property, you can generate a text shadow directly with our [CSS Text Shadow Generator](#).

Here you see how black text with a 4 pixel rgb(235, 210, 201) colored shadow looks like.

```
.shadow{ text-shadow: 4px 4px 2px rgb(235, 210, 201) }
```

Border

The CSS property to change the border of an element to CIELCh 86, 10.509, 46.461 is called "border". The border property can be set on classes, ids or directly on the HTML element.

This example shows the color as border, it can be applied via the CSS property "border" or "border-color".

```
.border, #border, table{ border:4px solid rgb(235, 210, 201) }
```

If only the border color should be changed use the property `border-color`.

```
.border{ border-color:rgb(235, 210, 201) }
```

If you want to add a box shadow in that color use:

Here you see how a box with a 4 pixel `rgb(235, 210, 201)` colored shadow looks like.

```
.boxshadow{ -moz-box-shadow:4px 4px 4px  
4px rgb(235, 210, 201); -webkit-box-  
shadow:4px 4px 4px 4px rgb(235, 210, 201);  
box-shadow:4px 4px 4px 4px rgb(235, 210,  
201) }
```

Background

The CSS property to change the background color of an element to CIELCh 86, 10.509, 46.461 is called "background". The background property can be set on classes, ids or directly on the HTML element.

```
.background, #background, body{  
background: rgb(235, 210, 201) }
```

If only the background color should be changed can be used:

```
.background{ background-color: rgb(235,  
210, 201) }
```

This example shows the color as background, it is applied via the CSS property "background".

To optimize and compress your CSS code, you can use our [online CSS compressor and optimizer](#) based on csstidy. If you want to create a linear or radial gradient as background or border, check our [CSS Gradient Generator](#).

Hey! You found this booklet interesting? Support Converting Colors with the new Membership Option!

The pro membership hides all ads, plus gives you double the colors in the color bucket, and more awesome pro features!

[Learn more, Memberships starting at \\$2.50/m!](#)

**Follow me
on Twitter!**

@ConvertingColor