

Converting Colors

CIELCh(86, 12.795, 56.568)

Have a look what the booklet for
CIELCh(86, 12.795, 56.568) contains.

CIELCh(86, 12.942, 57.066)	3
<i>Conversions</i>	4
<i>Details</i>	6
<i>Harmonies</i>	11
<i>Previews</i>	20
<i>Color Blindness Simulation</i>	23
<i>CSS Examples</i>	26

Color

CIELCh(86, 12.942, 57.066)

Conversions

Conversions Part 1

Format	Color
Hex	EDD2C3
RGB	237, 210, 195
RGB Percent	93%, 82%, 76%
CMY	0.0709, 0.1767, 0.2356
CMYK	0.00, 0.11, 0.18, 0.07
HSL	21°, 54%, 85%
HSV	21°, 18%, 93%
XYZ	67.7721, 67.9871, 61.1394
YIQ	216.3630, 20.9070, 1.0590

Conversions

Conversions Part 2

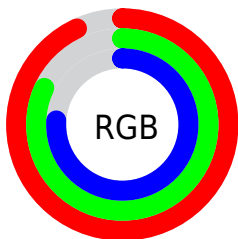
Format	Color
R _Y B	237, 218, 195
Decimal	15585987
CIE Lab	86.00, 7.04, 10.86
CIE LCh	86, 12.942, 57.066
Yxy	67.9871, 0.3442, 0.3453
Android (android.graphics.Color)	4293776067 (0xFFEDD2C3)
YUV	216.3630, -10.5320, 18.0986
Hunter-Lab	82.4543, 2.4205, 13.7548

Details

The CIELCh color **86, 12.942, 57.066** is a light color, and the websafe version is hex **FFCCCC**. A complement of this color would be **87, 11.854, 240.618**, and the grayscale version is **86, 0.010, 296.813**.

A 20% lighter version of the original color is **100, 1.510, 110.014**, and **66, 13.160, 58.797** is the 20% darker color. If you saturate the color by 10%, you get **82, 20.975, 56.277**, and if you desaturate by 10%, it is **90, 5.447, 57.882**.

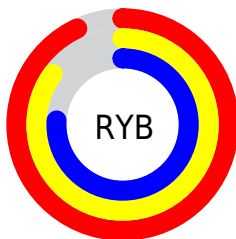
Distribution



Red (93%)

Green (82%)

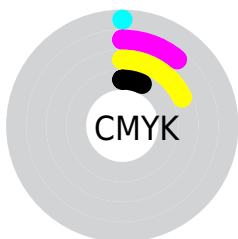
Blue (76%)



Red (93%)

Yellow (85%)

Blue (76%)

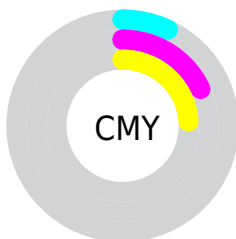


Cyan (0%)

Magenta (11%)

Yellow (18%)

Black (7%)



Cyan (7%)

Magenta (18%)

Yellow (24%)


Brightness & Saturation Gradients

These gradients show how the CIELCh color 86, 12.942, 57.066 changes by changing the brightness by 10 percent. The first figure shows a shift by +10% for each color and the second figure -10%.

Similar to the brightness gradients but the following saturation gradients show a change of the CIELCh color 86, 12.942, 57.066 by changing the saturation by 10% instead.

 86, 12.942, 57.066

 86, 12.942, 57.066

 100, 12.942,
57.066

 76, 12.942, 57.066

 66, 12.942, 57.066

 56, 12.942, 57.066

 46, 12.942, 57.066

 36, 12.942, 57.066

 26, 12.942, 57.066

 16, 12.942, 57.066

 6, 12.942, 57.066

 0, 12.942, 57.066

86, 12.942, 57.066

86, 12.942, 57.066

82, 20.975, 56.277

90, 5.447, 57.882

78, 29.587, 55.525

95, 1.560, 239.213

74, 38.794, 54.843

99, 6.202, 199.119

70, 48.558, 54.232

66, 58.732, 53.660

63, 68.945, 53.020

60, 78.371, 52.045

57, 85.662, 50.282

57, 87.160, 49.890

Harmonies

Complementary

The Complementary color scheme is a pair of colors which are on the opposite of each other on the color wheel.



86, 12.942, 57.066



87, 11.854, 240.618

Rectangle

The Rectangle color scheme consists of four colors that form a rectangle on the color wheel.



86, 12.942, 57.066



86, 12.942, 107.066



86, 12.942, 237.066



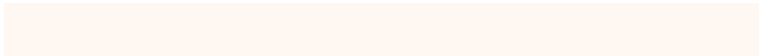
86, 12.942, 287.066

Sweetspot

The Sweet Spot groups the original color and five complimentary colors.



86, 12.942, 57.079



98, 3.706, 58.066



83, 20.930, 337.679



52, 2.535, 58.023



0, 0.000, 0.000



53, 0.007, 296.813

Same Dimension

The Same Dimension uses a secret algorithm to generate beautiful new colors.



86, 12.942, 57.079



90, 16.469, 56.805



91, 18.529, 101.283



47, 3.998, 57.749



44, 70.818, 50.528



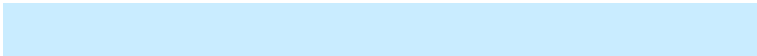
11, 22.917, 46.445

Inverse Universe

The Inverse Universe completely reimagines the original color for something new.



87, 11.854, 240.618



92, 14.807, 241.062



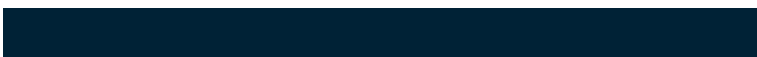
82, 19.020, 285.451



47, 3.826, 239.676



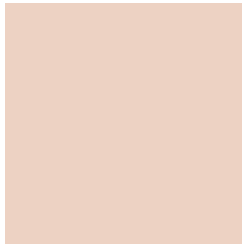
47, 41.841, 265.926



12, 16.334, 256.969

Previews

White Background



This preview shows how the CIE LCh color 86, 12.942, 57.066 looks on a white background.

Color Contrast Check

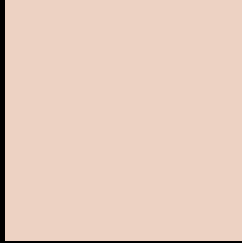
Large Text (above 18pt) WCAG AA × Fail

Any Text WCAG AA × Fail

Large Text (above 18pt) WCAG AAA × Fail

Any Text WCAG AAA × Fail

Black Background



This preview shows how the CIELCh color 86, 12.942, 57.066 looks on a black background.

Color Contrast Check

Large Text (above 18pt) WCAG AA ✓ Pass

Any Text WCAG AA ✓ Pass

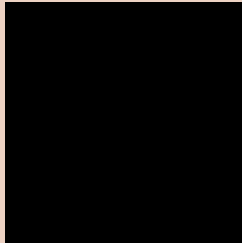
Large Text (above 18pt) WCAG AAA ✓ Pass

Any Text WCAG AAA ✓ Pass

If you want to check with other color combinations, try the [Color Contrast Checker](#).

CIELCh 86, 12.942, 57.066

Background



This preview shows how black text looks on a background with the CIELCh color 86, 12.942, 57.066.

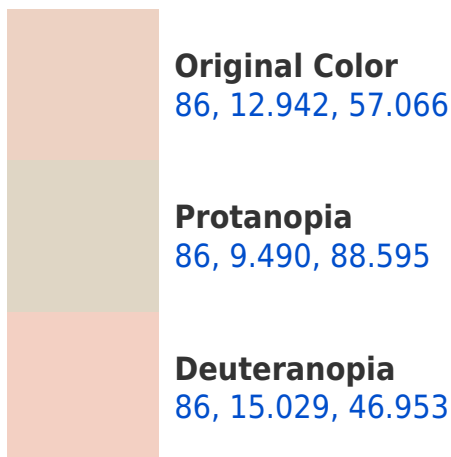


This preview shows how white text looks on a background with the CIELCh color 86, 12.942, 57.066.

Color Blindness Simulation

Color vision deficiency is a very complex topic, and I could not describe the different causes any better than Wikipedia does, so if you want to learn more, you should check out their [article about color blindness](#).

Dichromacy





Tritanopia
86, 14.936, 346.491

Trichromacy



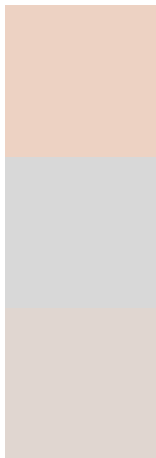
Original Color
86, 12.942, 57.066

Protanomaly
86, 10.526, 76.926

Deuteranomaly
86, 14.261, 50.821

Tritanomaly
86, 12.102, 7.857

Monochromacy



Original Color
86, 12.942, 57.066

Achromatopsia
86, 0.010, 296.813

Achromatomaly
86, 4.815, 60.073

CSS Examples

Text

The CSS property to change the color of the text to CIELCh 86, 12.942, 57.066 is called "color". The color property can be set on classes, ids or directly on the HTML element.

This example shows how text in the color `rgb(237, 210, 195)` looks like.

```
.text, #text, p{  
    color:rgb(237, 210, 195)  
}
```

If you want to add a text shadow in that color use the text-shadow property, you can generate a text shadow directly with our [CSS Text Shadow Generator](#).

Here you see how black text with a 4 pixel rgb(237, 210, 195) colored shadow looks like.

```
.shadow{ text-shadow: 4px 4px 2px rgb(237, 210, 195) }
```

Border

The CSS property to change the border of an element to CIELCh 86, 12.942, 57.066 is called "border". The border property can be set on classes, ids or directly on the HTML element.

This example shows the color as border, it can be applied via the CSS property "border" or "border-color".

```
.border, #border, table{ border:4px solid rgb(237, 210, 195) }
```

If only the border color should be changed use the property `border-color`.

```
.border{ border-color:rgb(237, 210, 195) }
```

If you want to add a box shadow in that color use:

Here you see how a box with a 4 pixel `rgb(237, 210, 195)` colored shadow looks like.

```
.boxshadow{ -moz-box-shadow:4px 4px 4px  
4px rgb(237, 210, 195); -webkit-box-  
shadow:4px 4px 4px 4px rgb(237, 210, 195);  
box-shadow:4px 4px 4px 4px rgb(237, 210,  
195) }
```

Background

The CSS property to change the background color of an element to CIELCh 86, 12.942, 57.066 is called "background". The background property can be set on classes, ids or directly on the HTML element.

```
.background, #background, body{  
background: rgb(237, 210, 195) }
```

If only the background color should be changed can be used:

```
.background{ background-color: rgb(237,  
210, 195) }
```

This example shows the color as background, it is applied via the CSS property "background".

To optimize and compress your CSS code, you can use our [online CSS compressor and optimizer](#) based on csstidy. If you want to create a linear or radial gradient as background or border, check our [CSS Gradient Generator](#).

Hey! You found this booklet interesting? Support Converting Colors with the new Membership Option!

The pro membership hides all ads, plus gives you double the colors in the color bucket, and more awesome pro features!

[Learn more, Memberships starting at \\$2.50/m!](#)

**Follow me
on Twitter!**

@ConvertingColor