

Converting Colors

CIELCh(86, 16.297, 51.272)

Have a look what the booklet for
CIELCh(86, 16.297, 51.272) contains.

CIELCh(86, 16.212, 51.077)	3
<i>Conversions</i>	4
<i>Details</i>	6
<i>Harmonies</i>	11
<i>Previews</i>	20
<i>Color Blindness Simulation</i>	23
<i>CSS Examples</i>	26

Color

CIELCh(86, 16.212, 51.077)

Conversions

Conversions Part 1

Format	Color
Hex	F4D0C0
RGB	244, 208, 192
RGB Percent	96%, 82%, 75%
CMY	0.0441, 0.1852, 0.2479
CMYK	0.00, 0.15, 0.21, 0.04
HSL	18°, 70%, 85%
HSV	18°, 21%, 96%
XYZ	69.2157, 67.9871, 59.2139
YIQ	216.9400, 26.5920, 2.6560

Conversions

Conversions Part 2

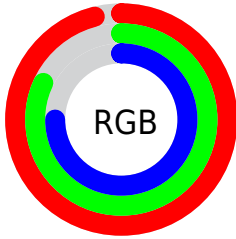
Format	Color
R _Y B	244, 215, 192
Decimal	16044224
CIE Lab	86.00, 10.19, 12.61
CIE LCh	86, 16.212, 51.077
Yxy	67.9871, 0.3524, 0.3461
Android (android.graphics.Color)	4294234304 (0xFFFF4D0C0)
YUV	216.9400, -12.2954, 23.7316
Hunter-Lab	82.4543, 5.5457, 15.1393

Details

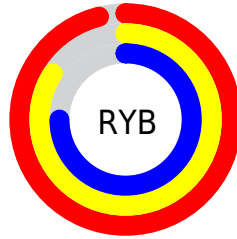
The CIELCh color **86, 16.212, 51.077** is a light color, and the websafe version is hex **FFCCCC**. A complement of this color would be **88, 14.343, 234.526**, and the grayscale version is **87, 0.010, 296.813**.

A 20% lighter version of the original color is **100, 3.539, 109.892**, and **66, 15.957, 51.397** is the 20% darker color. If you saturate the color by 10%, you get **81, 24.755, 50.549**, and if you desaturate by 10%, it is **91, 8.288, 51.680**.

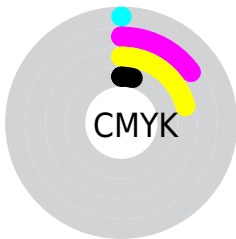
Distribution



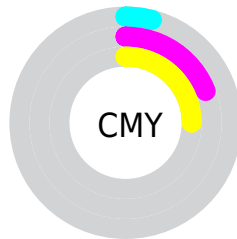
- Red (96%)
- Green (82%)
- Blue (75%)



- Red (96%)
- Yellow (84%)
- Blue (75%)



- Cyan (0%)
- Magenta (15%)
- Yellow (21%)
- Black (4%)



- Cyan (4%)
- Magenta (19%)
- Yellow (25%)


Brightness & Saturation Gradients

These gradients show how the CIELCh color 86, 16.212, 51.077 changes by changing the brightness by 10 percent. The first figure shows a shift by +10% for each color and the second figure -10%.

Similar to the brightness gradients but the following saturation gradients show a change of the CIELCh color 86, 16.212, 51.077 by changing the saturation by 10% instead.

 86, 16.212, 51.077

 86, 16.212, 51.077

 100, 16.212,
51.077

 76, 16.212, 51.077

 66, 16.212, 51.077

 56, 16.212, 51.077

 46, 16.212, 51.077

 36, 16.212, 51.077

 26, 16.212, 51.077

 16, 16.212, 51.077

 6, 16.212, 51.077

 0, 16.212, 51.077

86, 16.212, 51.077

86, 16.212, 51.077

81, 24.755, 50.549

91, 8.288, 51.680

77, 33.957, 50.102

95, 0.931, 51.808

73, 43.823, 49.767

99, 3.881, 199.330

69, 54.284, 49.545

65, 65.132, 49.390

61, 75.852, 49.150

59, 85.327, 48.446

56, 91.582, 47.225

Harmonies

Complementary

The Complementary color scheme is a pair of colors which are on the opposite of each other on the color wheel.



86, 16.212, 51.077



88, 14.343, 234.526

Rectangle

The Rectangle color scheme consists of four colors that form a rectangle on the color wheel.



86, 16.212, 51.077



86, 16.212, 101.077



86, 16.212, 231.077



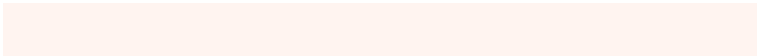
86, 16.212, 281.077

Sweetspot

The Sweet Spot groups the original color and five complimentary colors.



86, 16.211, 51.087



97, 4.463, 51.972



83, 26.726, 335.791



51, 2.968, 51.941



0, 0.000, 0.000



53, 0.007, 296.813

Same Dimension

The Same Dimension uses a secret algorithm to generate beautiful new colors.



86, 16.211, 51.087



87, 20.878, 50.823



92, 21.712, 97.916



49, 4.144, 51.788



43, 74.339, 47.788



12, 25.984, 43.382

Inverse Universe

The Inverse Universe completely reimagines the original color for something new.



88, 14.343, 234.526



90, 17.912, 235.109



82, 22.236, 283.240



49, 3.941, 233.362



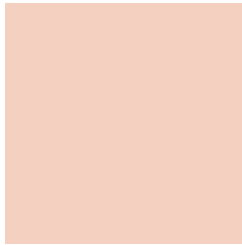
51, 39.153, 257.585



15, 16.394, 249.764

Previews

White Background



This preview shows how the CIELCh color 86, 16.212, 51.077 looks on a white background.

Color Contrast Check

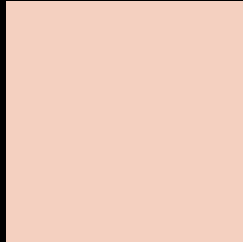
Large Text (above 18pt) WCAG AA × Fail

Any Text WCAG AA × Fail

Large Text (above 18pt) WCAG AAA × Fail

Any Text WCAG AAA × Fail

Black Background



This preview shows how the CIELCh color 86, 16.212, 51.077 looks on a black background.

Color Contrast Check

Large Text (above 18pt) WCAG AA ✓ Pass

Any Text WCAG AA ✓ Pass

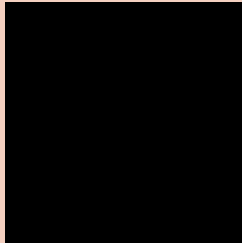
Large Text (above 18pt) WCAG AAA ✓ Pass

Any Text WCAG AAA ✓ Pass

If you want to check with other color combinations, try the [Color Contrast Checker](#).

CIELCh 86, 16.212, 51.077

Background



This preview shows how black text looks on a background with the CIELCh color 86, 16.212, 51.077.

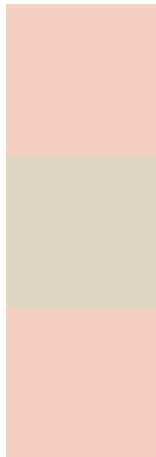


This preview shows how white text looks on a background with the CIELCh color 86, 16.212, 51.077.

Color Blindness Simulation

Color vision deficiency is a very complex topic, and I could not describe the different causes any better than Wikipedia does, so if you want to learn more, you should check out their [article about color blindness](#).

Dichromacy



Original Color


86, 16.212, 51.077

Protanopia

86, 10.967, 91.297

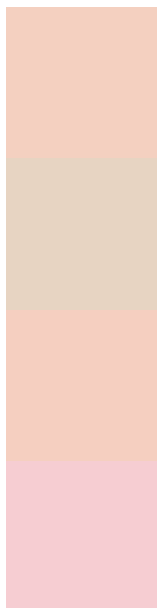
Deuteranopia

86, 16.631, 48.253



Tritanopia
86, 17.801, 352.842

Trichromacy



Original Color
86, 16.212, 51.077

Protanomaly
86, 11.856, 71.966

Deuteranomaly
86, 16.631, 48.253

Tritanomaly
86, 15.466, 10.895

Monochromacy



Original Color
86, 16.212, 51.077

Achromatopsia
87, 0.010, 296.813

Achromatomaly
86, 5.711, 52.820

CSS Examples

Text

The CSS property to change the color of the text to CIELCh 86, 16.212, 51.077 is called "color". The color property can be set on classes, ids or directly on the HTML element.

This example shows how text in the color `rgb(244, 208, 192)` looks like.

```
.text, #text, p{  
    color:rgb(244, 208, 192)  
}
```

If you want to add a text shadow in that color use the text-shadow property, you can generate a text shadow directly with our [CSS Text Shadow Generator](#).

Here you see how black text with a 4 pixel rgb(244, 208, 192) colored shadow looks like.

```
.shadow{ text-shadow: 4px 4px 2px rgb(244, 208, 192) }
```

Border

The CSS property to change the border of an element to CIELCh 86, 16.212, 51.077 is called "border". The border property can be set on classes, ids or directly on the HTML element.

This example shows the color as border, it can be applied via the CSS property "border" or "border-color".

```
.border, #border, table{ border:4px solid rgb(244, 208, 192) }
```

If only the border color should be changed use the property border-color.

```
.border{ border-color:rgb(244, 208, 192) }
```

If you want to add a box shadow in that color use:

Here you see how a box with a 4 pixel rgb(244, 208, 192) colored shadow looks like.

```
.boxshadow{ -moz-box-shadow:4px 4px 4px  
4px rgb(244, 208, 192); -webkit-box-  
shadow:4px 4px 4px 4px rgb(244, 208, 192);  
box-shadow:4px 4px 4px 4px rgb(244, 208,  
192) }
```

Background

The CSS property to change the background color of an element to CIELCh 86, 16.212, 51.077 is called "background". The background property can be set on classes, ids or directly on the HTML element.

```
.background, #background, body{  
background: rgb(244, 208, 192) }
```

If only the background color should be changed can be used:

```
.background{ background-color: rgb(244,  
208, 192) }
```

This example shows the color as background, it is applied via the CSS property "background".

To optimize and compress your CSS code, you can use our [online CSS compressor and optimizer](#) based on csstidy. If you want to create a linear or radial gradient as background or border, check our [CSS Gradient Generator](#).

Hey! You found this booklet interesting? Support Converting Colors with the new Membership Option!

The pro membership hides all ads, plus gives you double the colors in the color bucket, and more awesome pro features!

[Learn more, Memberships starting at \\$2.50/m!](#)

**Follow me
on Twitter!**

@ConvertingColor