

Converting Colors

CIELCh(86, 4.858, 35.533)

Have a look what the booklet for
CIELCh(86, 4.858, 35.533) contains.

CIELCh(86, 4.874, 32.003)	3
<i>Conversions</i>	4
<i>Details</i>	6
<i>Harmonies</i>	11
<i>Previews</i>	20
<i>Color Blindness Simulation</i>	23
<i>CSS Examples</i>	26

Color

CIELCh(86, 4.874, 32.003)

Conversions

Conversions Part 1

Format	Color
Hex	E1D4D2
RGB	225, 212, 210
RGB Percent	88%, 83%, 82%
CMY	0.1163, 0.1673, 0.1751
CMYK	0.00, 0.06, 0.07, 0.12
HSL	8°, 20%, 85%
HSV	8°, 7%, 88%
XYZ	66.4594, 67.9871, 70.8122
YIQ	215.6590, 8.3900, 2.1340

Conversions

Conversions Part 2

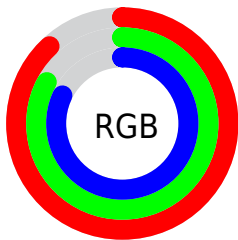
Format	Color
R _Y B	225, 212, 210
Decimal	14800082
CIE Lab	86.00, 4.13, 2.58
CIE LCh	86, 4.874, 32.003
Yxy	67.9871, 0.3238, 0.3312
Android (android.graphics.Color)	4292990162 (0xFFE1D4D2)
YUV	215.6590, -2.7899, 8.1921
Hunter-Lab	82.4543, -0.4214, 6.7994

Details

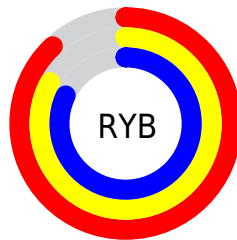
The CIELCh color **86, 4.874, 32.003** is a light color, and the websafe version is hex **CCCCCC**. A complement of this color would be **88, 4.671, 212.186**, and the grayscale version is **86, 0.010, 296.813**.

A 20% lighter version of the original color is **100, 0.012, 296.813**, and **66, 5.080, 26.004** is the 20% darker color. If you saturate the color by 10%, you get **81, 12.711, 32.308**, and if you desaturate by 10%, it is **91, 2.350, 212.329**.

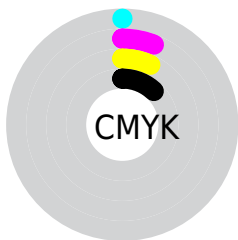
Distribution



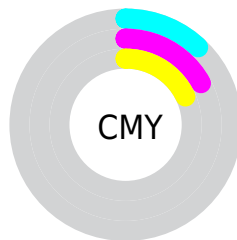
- Red (88%)
- Green (83%)
- Blue (82%)



- Red (88%)
- Yellow (83%)
- Blue (82%)



- Cyan (0%)
- Magenta (6%)
- Yellow (7%)
- Black (12%)



- Cyan (12%)
- Magenta (17%)
- Yellow (18%)

Brightness & Saturation Gradients

These gradients show how the CIELCh color 86, 4.874, 32.003 changes by changing the brightness by 10 percent. The first figure shows a shift by +10% for each color and the second figure -10%.

Similar to the brightness gradients but the following saturation gradients show a change of the CIELCh color 86, 4.874, 32.003 by changing the saturation by 10% instead.



86, 4.874, 32.003

86, 4.874, 32.003

81, 12.711, 32.308

91, 2.350, 212.329

75, 21.214, 32.682

97, 8.983, 210.832

70, 30.409, 33.248

98, 10.060,
198.836

65, 40.283, 34.067

61, 50.760, 35.193

57, 61.659, 36.658

53, 72.617, 38.409

51, 82.860, 40.168

49, 90.755, 41.223

Harmonies

Complementary

The Complementary color scheme is a pair of colors which are on the opposite of each other on the color wheel.



86, 4.874, 32.003



88, 4.671, 212.186

Rectangle

The Rectangle color scheme consists of four colors that form a rectangle on the color wheel.



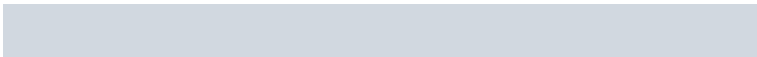
86, 4.874, 32.003



86, 4.874, 82.003



86, 4.874, 212.003



86, 4.874, 262.003

Sweetspot

The Sweet Spot groups the original color and five complimentary colors.



86, 4.873, 32.030



99, 1.587, 31.684



86, 8.736, 328.663



53, 0.902, 31.661



0, 0.000, 0.000



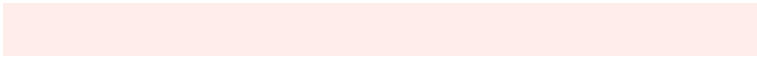
53, 0.007, 296.813

Same Dimension

The Same Dimension uses a secret algorithm to generate beautiful new colors.



86, 4.873, 32.030



95, 6.510, 32.073



88, 5.322, 87.479



44, 4.190, 32.110



38, 76.898, 41.860



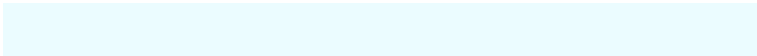
7, 23.313, 28.100

Inverse Universe

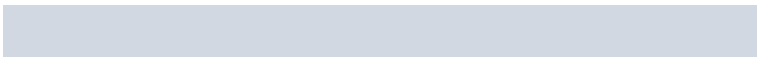
The Inverse Universe completely reimagines the original color for something new.



88, 4.671, 212.186



98, 6.183, 212.164



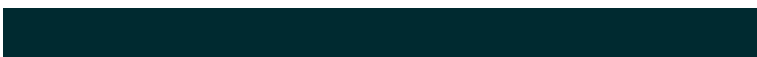
86, 5.317, 269.286



46, 3.942, 212.151



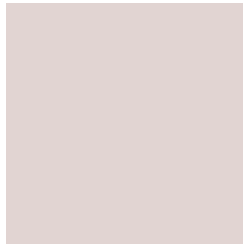
58, 33.152, 221.049



15, 13.770, 216.525

Previews

White Background



This preview shows how the CIELCh color 86, 4.874, 32.003 looks on a white background.

Color Contrast Check

Large Text (above 18pt) WCAG AA × Fail

Any Text WCAG AA × Fail

Large Text (above 18pt) WCAG AAA × Fail

Any Text WCAG AAA × Fail

Black Background



This preview shows how the CIELCh color 86, 4.874, 32.003 looks on a black background.

Color Contrast Check

Large Text (above 18pt) WCAG AA ✓ Pass

Any Text WCAG AA ✓ Pass

Large Text (above 18pt) WCAG AAA ✓ Pass

Any Text WCAG AAA ✓ Pass

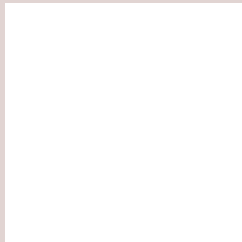
If you want to check with other color combinations, try the [Color Contrast Checker](#).

CIELCh 86, 4.874, 32.003

Background



This preview shows how black text looks on a background with the CIELCh color 86, 4.874, 32.003.

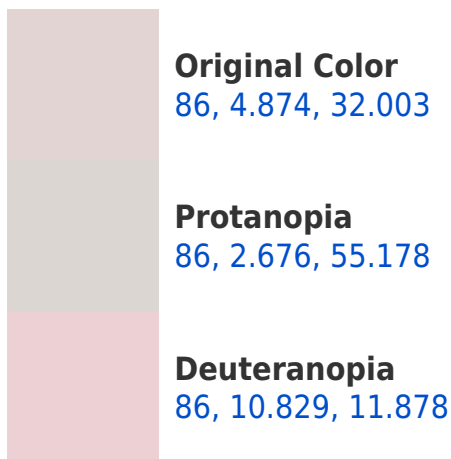


This preview shows how white text looks on a background with the CIELCh color 86, 4.874, 32.003.

Color Blindness Simulation

Color vision deficiency is a very complex topic, and I could not describe the different causes any better than Wikipedia does, so if you want to learn more, you should check out their [article about color blindness](#).

Dichromacy





Tritanopia
86, 10.631, 328.042

Trichromacy



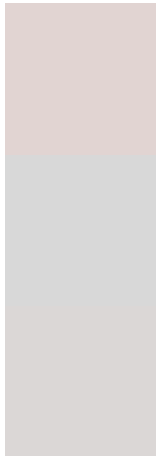
Original Color
86, 4.874, 32.003

Protanomaly
86, 3.440, 37.159

Deuteranomaly
86, 8.492, 16.454

Tritanomaly
86, 7.494, 340.925

Monochromacy



Original Color
86, 4.874, 32.003

Achromatopsia
86, 0.010, 296.813

Achromatomaly
86, 1.533, 39.051

CSS Examples

Text

The CSS property to change the color of the text to CIELCh 86, 4.874, 32.003 is called "color". The color property can be set on classes, ids or directly on the HTML element.

This example shows how text in the color `rgb(225, 212, 210)` looks like.

```
.text, #text, p{  
    color:rgb(225, 212, 210)  
}
```

If you want to add a text shadow in that color use the text-shadow property, you can generate a text shadow directly with our [CSS Text Shadow Generator](#).

Here you see how black text with a 4 pixel rgb(225, 212, 210) colored shadow looks like.

```
.shadow{ text-shadow: 4px 4px 2px rgb(225, 212, 210) }
```

Border

The CSS property to change the border of an element to CIELCh 86, 4.874, 32.003 is called "border". The border property can be set on classes, ids or directly on the HTML element.

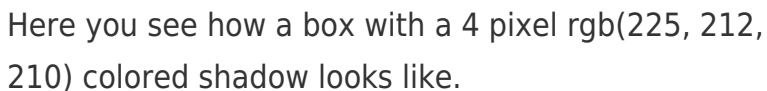
This example shows the color as border, it can be applied via the CSS property "border" or "border-color".

```
.border, #border, table{ border:4px solid rgb(225, 212, 210) }
```

If only the border color should be changed use the property `border-color`.

```
.border{ border-color:rgb(225, 212, 210) }
```

If you want to add a box shadow in that color use:



Here you see how a box with a 4 pixel `rgb(225, 212, 210)` colored shadow looks like.

```
.boxshadow{ -moz-box-shadow:4px 4px 4px 4px rgb(225, 212, 210); -webkit-box-shadow:4px 4px 4px 4px rgb(225, 212, 210); box-shadow:4px 4px 4px 4px rgb(225, 212, 210) }
```

Background

The CSS property to change the background color of an element to CIELCh 86, 4.874, 32.003 is called "background". The background property can be set on classes, ids or directly on the HTML element.

```
.background, #background, body{  
background: rgb(225, 212, 210) }
```

If only the background color should be changed can be used:

```
.background{ background-color: rgb(225,  
212, 210) }
```

This example shows the color as background, it is applied via the CSS property "background".

To optimize and compress your CSS code, you can use our [online CSS compressor and optimizer](#) based on csstidy. If you want to create a linear or radial gradient as background or border, check our [CSS Gradient Generator](#).

Hey! You found this booklet interesting? Support Converting Colors with the new Membership Option!

The pro membership hides all ads, plus gives you double the colors in the color bucket, and more awesome pro features!

[Learn more, Memberships starting at \\$2.50/m!](#)

**Follow me
on Twitter!**

@ConvertingColor