

Converting Colors

CIELCh(86, 5.047, 33.649)

Have a look what the booklet for
CIELCh(86, 5.047, 33.649) contains.

CIELCh(86, 5.238, 31.163)	3
<i>Conversions</i>	4
<i>Details</i>	6
<i>Harmonies</i>	11
<i>Previews</i>	20
<i>Color Blindness Simulation</i>	23
<i>CSS Examples</i>	26

Color

CIELCh(86, 5.238, 31.163)

Conversions

Conversions Part 1

Format	Color
Hex	E2D4D2
RGB	226, 212, 210
RGB Percent	89%, 83%, 82%
CMY	0.1133, 0.1682, 0.1760
CMYK	0.00, 0.06, 0.07, 0.11
HSL	8°, 22%, 86%
HSV	8°, 7%, 89%
XYZ	66.6163, 67.9871, 70.6560
YIQ	215.9580, 8.9860, 2.3460

Conversions

Conversions Part 2

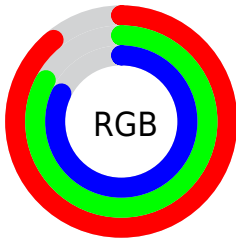
Format	Color
R _Y B	226, 212, 210
Decimal	14865618
CIE Lab	86.00, 4.48, 2.71
CIE LCh	86, 5.238, 31.163
Yxy	67.9871, 0.3245, 0.3312
Android (android.graphics.Color)	4293055698 (0xFFE2D4D2)
YUV	215.9580, -2.9373, 8.8068
Hunter-Lab	82.4543, -0.0818, 6.9117

Details

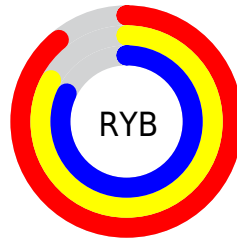
The CIELCh color **86, 5.238, 31.163** is a light color, and the websafe version is hex **CCCCCC**. A complement of this color would be **88, 5.005, 211.270**, and the grayscale version is **86, 0.010, 296.813**.

A 20% lighter version of the original color is **100, 0.012, 296.813**, and **66, 5.473, 25.595** is the 20% darker color. If you saturate the color by 10%, you get **81, 13.175, 31.504**, and if you desaturate by 10%, it is **92, 2.078, 211.473**.

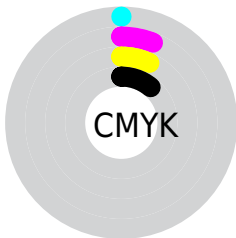
Distribution



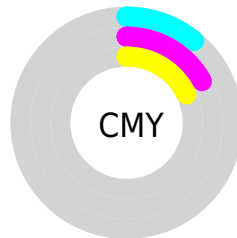
- Red (89%)
- Green (83%)
- Blue (82%)



- Red (89%)
- Yellow (83%)
- Blue (82%)



- Cyan (0%)
- Magenta (6%)
- Yellow (7%)
- Black (11%)



- Cyan (11%)
- Magenta (17%)
- Yellow (18%)

Brightness & Saturation Gradients

These gradients show how the CIELCh color 86, 5.238, 31.163 changes by changing the brightness by 10 percent. The first figure shows a shift by +10% for each color and the second figure -10%.

Similar to the brightness gradients but the following saturation gradients show a change of the CIELCh color 86, 5.238, 31.163 by changing the saturation by 10% instead.

86, 5.238, 31.163

86, 5.238, 31.163

100, 5.238, 31.163

76, 5.238, 31.163

66, 5.238, 31.163

56, 5.238, 31.163

46, 5.238, 31.163

36, 5.238, 31.163

26, 5.238, 31.163

16, 5.238, 31.163

6, 5.238, 31.163

0, 5.238, 31.163

86, 5.238, 31.163

86, 5.238, 31.163

81, 13.175, 31.504

92, 2.078, 211.473

75, 21.785, 31.929

97, 8.803, 210.114

70, 31.089, 32.555

98, 9.807, 198.854

65, 41.069, 33.444

61, 51.639, 34.654

57, 62.606, 36.217

53, 73.589, 38.077

51, 83.780, 39.936

49, 91.512, 41.067

Harmonies

Complementary

The Complementary color scheme is a pair of colors which are on the opposite of each other on the color wheel.



86, 5.238, 31.163



88, 5.005, 211.270

Rectangle

The Rectangle color scheme consists of four colors that form a rectangle on the color wheel.



86, 5.238, 31.163



86, 5.238, 81.163



86, 5.238, 211.163



86, 5.238, 261.163

Sweetspot

The Sweet Spot groups the original color and five complimentary colors.



86, 5.237, 31.188



99, 1.597, 30.811



86, 9.424, 328.163



53, 0.908, 30.788



0, 0.000, 0.000



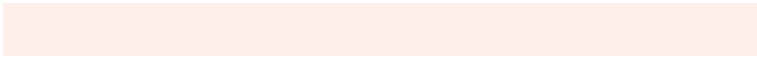
53, 0.007, 296.813

Same Dimension

The Same Dimension uses a secret algorithm to generate beautiful new colors.



86, 5.237, 31.188



95, 6.553, 31.221



88, 5.587, 85.972



44, 4.217, 31.264



37, 77.093, 41.688



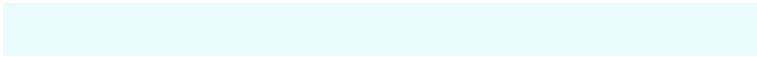
7, 23.443, 27.611

Inverse Universe

The Inverse Universe completely reimagines the original color for something new.



88, 5.005, 211.270



98, 6.222, 211.252



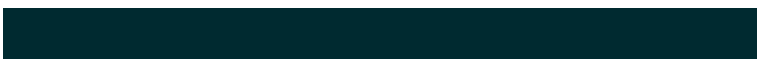
86, 5.571, 267.899



46, 3.967, 211.233



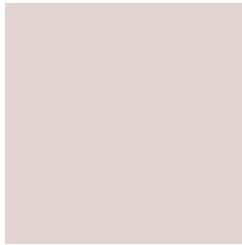
58, 33.272, 219.294



15, 13.834, 215.103

Previews

White Background



This preview shows how the CIELCh color 86, 5.238, 31.163 looks on a white background.

Color Contrast Check

Large Text (above 18pt) WCAG AA × Fail

Any Text WCAG AA × Fail

Large Text (above 18pt) WCAG AAA × Fail

Any Text WCAG AAA × Fail

Black Background



This preview shows how the CIE LCh color 86, 5.238, 31.163 looks on a black background.

Color Contrast Check

Large Text (above 18pt) WCAG AA ✓ Pass

Any Text WCAG AA ✓ Pass

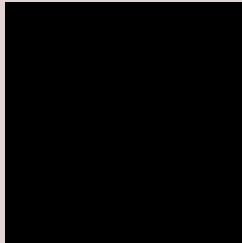
Large Text (above 18pt) WCAG AAA ✓ Pass

Any Text WCAG AAA ✓ Pass

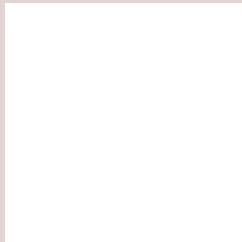
If you want to check with other color combinations, try the [Color Contrast Checker](#).

CIELCh 86, 5.238, 31.163

Background



This preview shows how black text looks on a background with the CIELCh color 86, 5.238, 31.163.

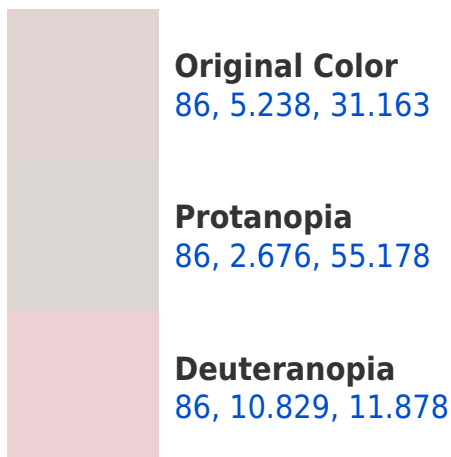


This preview shows how white text looks on a background with the CIELCh color 86, 5.238, 31.163.

Color Blindness Simulation

Color vision deficiency is a very complex topic, and I could not describe the different causes any better than Wikipedia does, so if you want to learn more, you should check out their [article about color blindness](#).

Dichromacy





Tritanopia
86, 10.631, 328.042

Trichromacy



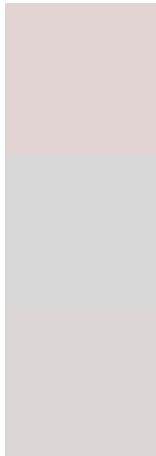
Original Color
86, 5.238, 31.163

Protanomaly
86, 3.440, 37.159

Deuteranomaly
86, 8.907, 13.288

Tritanomaly
86, 7.494, 340.925

Monochromacy



Original Color
86, 5.238, 31.163

Achromatopsia
86, 0.010, 296.813

Achromatomaly
86, 1.880, 35.356

CSS Examples

Text

The CSS property to change the color of the text to CIElCh 86, 5.238, 31.163 is called "color". The color property can be set on classes, ids or directly on the HTML element.

This example shows how text in the color `rgb(226, 212, 210)` looks like.

```
.text, #text, p{  
    color:rgb(226, 212, 210)  
}
```

If you want to add a text shadow in that color use the text-shadow property, you can generate a text shadow directly with our [CSS Text Shadow Generator](#).

Here you see how black text with a 4 pixel rgb(226, 212, 210) colored shadow looks like.

```
.shadow{ text-shadow: 4px 4px 2px rgb(226, 212, 210) }
```

Border

The CSS property to change the border of an element to CIELCh 86, 5.238, 31.163 is called "border". The border property can be set on classes, ids or directly on the HTML element.

This example shows the color as border, it can be applied via the CSS property "border" or "border-color".

```
.border, #border, table{ border:4px solid rgb(226, 212, 210) }
```

If only the border color should be changed use the property border-color.

```
.border{ border-color:rgb(226, 212, 210) }
```

If you want to add a box shadow in that color use:

Here you see how a box with a 4 pixel rgb(226, 212, 210) colored shadow looks like.

```
.boxshadow{ -moz-box-shadow:4px 4px 4px  
4px rgb(226, 212, 210); -webkit-box-  
shadow:4px 4px 4px 4px rgb(226, 212, 210);  
box-shadow:4px 4px 4px 4px rgb(226, 212,  
210) }
```

Background

The CSS property to change the background color of an element to CIELCh 86, 5.238, 31.163 is called "background". The background property can be set on classes, ids or directly on the HTML element.

```
.background, #background, body{  
background: rgb(226, 212, 210) }
```

If only the background color should be changed can be used:

```
.background{ background-color: rgb(226,  
212, 210) }
```

This example shows the color as background, it is applied via the CSS property "background".

To optimize and compress your CSS code, you can use our [online CSS compressor and optimizer](#) based on csstidy. If you want to create a linear or radial gradient as background or border, check our [CSS Gradient Generator](#).

Hey! You found this booklet interesting? Support Converting Colors with the new Membership Option!

The pro membership hides all ads, plus gives you double the colors in the color bucket, and more awesome pro features!

[Learn more, Memberships starting at \\$2.50/m!](#)

**Follow me
on Twitter!**

@ConvertingColor