

Converting Colors

CIELCh(86, 5.433, 19.928)

Have a look what the booklet for
CIELCh(86, 5.433, 19.928) contains.

CIELCh(86, 5.492, 19.705)	3
<i>Conversions</i>	4
<i>Details</i>	6
<i>Harmonies</i>	11
<i>Previews</i>	20
<i>Color Blindness Simulation</i>	23
<i>CSS Examples</i>	26

Color

CIELCh(86, 5.492, 19.705)

Conversions

Conversions Part 1

Format	Color
Hex	E3D4D4
RGB	227, 212, 212
RGB Percent	89%, 83%, 83%
CMY	0.1108, 0.1696, 0.1696
CMYK	0.00, 0.07, 0.07, 0.11
HSL	0°, 21%, 86%
HSV	0°, 7%, 89%
XYZ	66.9264, 67.9871, 71.7125
YIQ	216.4850, 8.9400, 3.1800

Conversions

Conversions Part 2

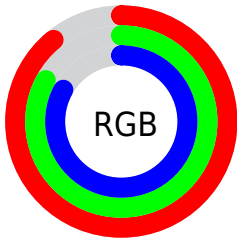
Format	Color
R _Y B	227, 212, 212
Decimal	14931156
CIE Lab	86.00, 5.17, 1.85
CIE LCh	86, 5.492, 19.705
Yxy	67.9871, 0.3239, 0.3290
Android (android.graphics.Color)	4293121236 (0xFFE3D4D4)
YUV	216.4850, -2.2111, 9.2217
Hunter-Lab	82.4543, 0.5897, 6.1521

Details

The CIELCh color **86, 5.492, 19.705** is a light color, and the websafe version is hex **CCCCCC**. A complement of this color would be **89, 5.267, 199.178**, and the grayscale version is **86, 0.010, 296.813**.

A 20% lighter version of the original color is **100, 0.012, 296.813**, and **66, 5.829, 19.863** is the 20% darker color. If you saturate the color by 10%, you get **80, 14.349, 20.548**, and if you desaturate by 10%, it is **92, 2.700, 199.475**.

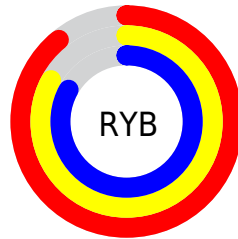
Distribution



Red (89%)

Green (83%)

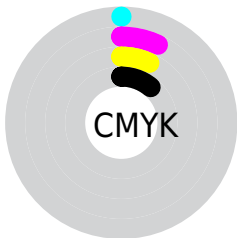
Blue (83%)



Red (89%)

Yellow (83%)

Blue (83%)

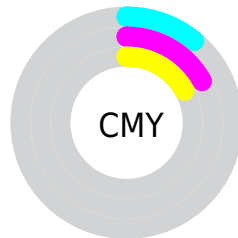


Cyan (0%)

Magenta (7%)

Yellow (7%)

Black (11%)



Cyan (11%)

Magenta (17%)

Yellow (17%)

Brightness & Saturation Gradients

These gradients show how the CIELCh color 86, 5.492, 19.705 changes by changing the brightness by 10 percent. The first figure shows a shift by +10% for each color and the second figure -10%.

Similar to the brightness gradients but the following saturation gradients show a change of the CIELCh color 86, 5.492, 19.705 by changing the saturation by 10% instead.



86, 5.492, 19.705

86, 5.492, 19.705

80, 14.349, 20.548

92, 2.700, 199.475

74, 23.896, 21.544

98, 9.600, 198.868

68, 34.103, 22.832

63, 44.859, 24.516

58, 55.956, 26.708

54, 67.068, 29.500

51, 77.747, 32.867

49, 87.234, 36.445

48, 93.892, 39.226

Harmonies

Complementary

The Complementary color scheme is a pair of colors which are on the opposite of each other on the color wheel.



86, 5.492, 19.705



89, 5.267, 199.178

Rectangle

The Rectangle color scheme consists of four colors that form a rectangle on the color wheel.



86, 5.492, 19.705



86, 5.492, 69.705



86, 5.492, 199.705



86, 5.492, 249.705

Sweetspot

The Sweet Spot groups the original color and five complimentary colors.



86, 5.490, 19.726



99, 1.794, 19.180



86, 9.562, 324.775



53, 1.020, 19.154



0, 0.000, 0.000



53, 0.007, 296.813

Same Dimension

The Same Dimension uses a secret algorithm to generate beautiful new colors.



86, 5.490, 19.726



94, 7.347, 19.843



88, 4.751, 74.531



44, 4.727, 19.954



36, 79.110, 39.955



6, 25.536, 20.951

Inverse Universe

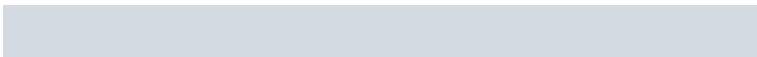
The Inverse Universe completely reimagines the original color for something new.



89, 5.267, 199.178



99, 6.983, 199.080



87, 4.688, 256.347



46, 4.453, 198.993



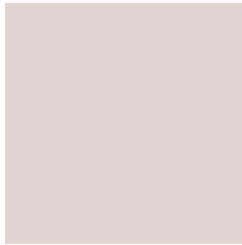
65, 37.925, 196.426



17, 15.580, 196.420

Previews

White Background



This preview shows how the CIELCh color 86, 5.492, 19.705 looks on a white background.

Color Contrast Check

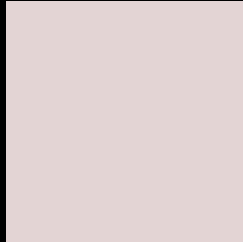
Large Text (above 18pt) WCAG AA × Fail

Any Text WCAG AA × Fail

Large Text (above 18pt) WCAG AAA × Fail

Any Text WCAG AAA × Fail

Black Background



This preview shows how the CIE LCh color 86, 5.492, 19.705 looks on a black background.

Color Contrast Check

Large Text (above 18pt) WCAG AA ✓ Pass

Any Text WCAG AA ✓ Pass

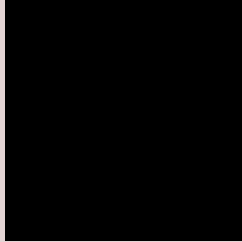
Large Text (above 18pt) WCAG AAA ✓ Pass

Any Text WCAG AAA ✓ Pass

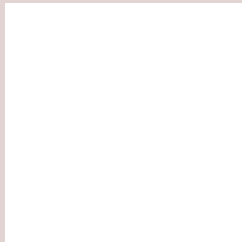
If you want to check with other color combinations, try the [Color Contrast Checker](#).

CIELCh 86, 5.492, 19.705

Background



This preview shows how black text looks on a background with the CIELCh color 86, 5.492, 19.705.



This preview shows how white text looks on a background with the CIELCh color 86, 5.492, 19.705.

Color Blindness Simulation

Color vision deficiency is a very complex topic, and I could not describe the different causes any better than Wikipedia does, so if you want to learn more, you should check out their [article about color blindness](#).

Dichromacy



Original Color

86, 5.492, 19.705

Protanopia

86, 1.882, 35.358

Deuteranopia

86, 10.900, 9.159



Tritanopia
86, 10.853, 329.570

Trichromacy



Original Color
86, 5.492, 19.705

Protanomaly
86, 3.276, 19.469

Deuteranomaly
86, 8.970, 9.973

Tritanomaly
86, 8.104, 339.704

Monochromacy



Original Color
86, 5.492, 19.705

Achromatopsia
86, 0.010, 296.813

Achromatomaly
86, 2.177, 19.297

CSS Examples

Text

The CSS property to change the color of the text to CIELCh 86, 5.492, 19.705 is called "color". The color property can be set on classes, ids or directly on the HTML element.

This example shows how text in the color `rgb(227, 212, 212)` looks like.

```
.text, #text, p{  
    color:rgb(227, 212, 212)  
}
```

If you want to add a text shadow in that color use the text-shadow property, you can generate a text shadow directly with our [CSS Text Shadow Generator](#).

Here you see how black text with a 4 pixel rgb(227, 212, 212) colored shadow looks like.

```
.shadow{ text-shadow: 4px 4px 2px rgb(227, 212, 212) }
```

Border

The CSS property to change the border of an element to CIELCh 86, 5.492, 19.705 is called "border". The border property can be set on classes, ids or directly on the HTML element.

This example shows the color as border, it can be applied via the CSS property "border" or "border-color".

```
.border, #border, table{ border:4px solid rgb(227, 212, 212) }
```

If only the border color should be changed use the property `border-color`.

```
.border{ border-color:rgb(227, 212, 212) }
```

If you want to add a box shadow in that color use:

Here you see how a box with a 4 pixel `rgb(227, 212, 212)` colored shadow looks like.

```
.boxshadow{ -moz-box-shadow:4px 4px 4px  
4px rgb(227, 212, 212); -webkit-box-  
shadow:4px 4px 4px 4px rgb(227, 212, 212);  
box-shadow:4px 4px 4px 4px rgb(227, 212,  
212) }
```

Background

The CSS property to change the background color of an element to CIELCh 86, 5.492, 19.705 is called "background". The background property can be set on classes, ids or directly on the HTML element.

```
.background, #background, body{  
background: rgb(227, 212, 212) }
```

If only the background color should be changed can be used:

```
.background{ background-color: rgb(227,  
212, 212) }
```

This example shows the color as background, it is applied via the CSS property "background".

To optimize and compress your CSS code, you can use our [online CSS compressor and optimizer](#) based on csstidy. If you want to create a linear or radial gradient as background or border, check our [CSS Gradient Generator](#).

Hey! You found this booklet interesting? Support Converting Colors with the new Membership Option!

The pro membership hides all ads, plus gives you double the colors in the color bucket, and more awesome pro features!

[Learn more, Memberships starting at \\$2.50/m!](#)

**Follow me
on Twitter!**

@ConvertingColor