

Converting Colors

CIELCh(86, 5.650, 26.546)

Have a look what the booklet for
CIELCh(86, 5.650, 26.546) contains.

CIELCh(86, 5.603, 30.435)	3
<i>Conversions</i>	4
<i>Details</i>	6
<i>Harmonies</i>	11
<i>Previews</i>	20
<i>Color Blindness Simulation</i>	23
<i>CSS Examples</i>	26

Color

CIELCh(86, 5.603, 30.435)

Conversions

Conversions Part 1

Format	Color
Hex	E3D4D2
RGB	227, 212, 210
RGB Percent	89%, 83%, 82%
CMY	0.1103, 0.1691, 0.1769
CMYK	0.00, 0.07, 0.07, 0.11
HSL	7°, 23%, 86%
HSV	7°, 7%, 89%
XYZ	66.7733, 67.9871, 70.4998
YIQ	216.2570, 9.5820, 2.5580

Conversions

Conversions Part 2

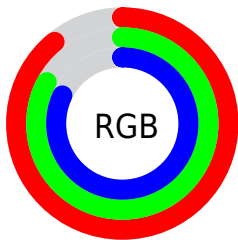
Format	Color
RYB	227, 212, 210
Decimal	14931154
CIELab	86.00, 4.83, 2.84
CIELCh	86, 5.603, 30.435
Yxy	67.9871, 0.3253, 0.3312
Android (android.graphics.Color)	4293121234 (0xFFE3D4D2)
YUV	216.2570, -3.0847, 9.4216
Hunter-Lab	82.4543, 0.2583, 7.0241

Details

The CIELCh color **86, 5.603, 30.435** is a light color, and the websafe version is hex **CCCCCC**. A complement of this color would be **88, 5.339, 210.469**, and the grayscale version is **86, 0.010, 296.813**.

A 20% lighter version of the original color is **100, 0.012, 296.813**, and **66, 5.866, 25.246** is the 20% darker color. If you saturate the color by 10%, you get **80, 13.636, 30.809**, and if you desaturate by 10%, it is **92, 1.801, 210.746**.

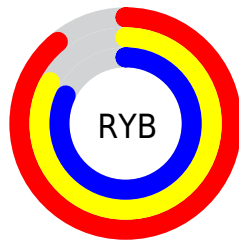
Distribution



Red (89%)

Green (83%)

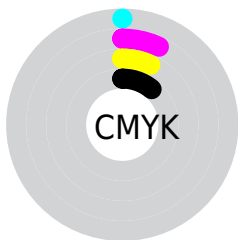
Blue (82%)



Red (89%)

Yellow (83%)

Blue (82%)

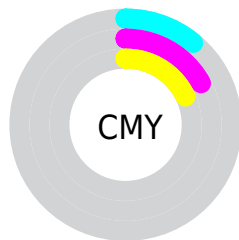


Cyan (0%)

Magenta (7%)

Yellow (7%)

Black (11%)



Cyan (11%)

Magenta (17%)

Yellow (18%)

Brightness & Saturation Gradients

These gradients show how the CIELCh color 86, 5.603, 30.435 changes by changing the brightness by 10 percent. The first figure shows a shift by +10% for each color and the second figure -10%.

Similar to the brightness gradients but the following saturation gradients show a change of the CIELCh color 86, 5.603, 30.435 by changing the saturation by 10% instead.



86, 5.603, 30.435

86, 5.603, 30.435

80, 13.636, 30.809

92, 1.801, 210.746

75, 22.347, 31.280

97, 8.614, 209.530

70, 31.755, 31.959

98, 9.553, 198.871

65, 41.835, 32.912

61, 52.491, 34.198

57, 63.519, 35.851

53, 74.519, 37.809

50, 84.653, 39.756

49, 92.225, 40.952

Harmonies

Complementary

The Complementary color scheme is a pair of colors which are on the opposite of each other on the color wheel.



86, 5.603, 30.435



88, 5.339, 210.469

Rectangle

The Rectangle color scheme consists of four colors that form a rectangle on the color wheel.



86, 5.603, 30.435



86, 5.603, 80.435



86, 5.603, 210.435



86, 5.603, 260.435

Sweetspot

The Sweet Spot groups the original color and five complimentary colors.



86, 5.602, 30.458



99, 1.607, 30.051



86, 10.006, 328.189



53, 0.913, 30.028



0, 0.000, 0.000



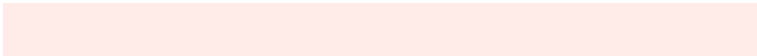
53, 0.007, 296.813

Same Dimension

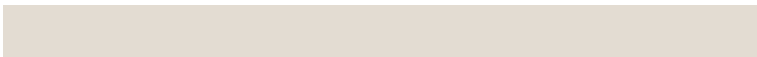
The Same Dimension uses a secret algorithm to generate beautiful new colors.



86, 5.602, 30.458



94, 7.447, 30.514



88, 5.935, 85.922



44, 4.242, 30.526



37, 77.257, 41.543



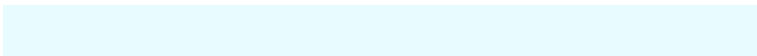
7, 23.559, 27.184

Inverse Universe

The Inverse Universe completely reimagines the original color for something new.



88, 5.339, 210.469



98, 7.023, 210.439



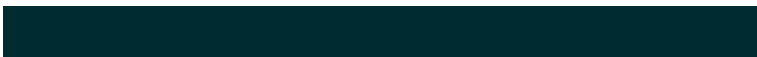
86, 5.914, 267.953



46, 3.990, 210.434



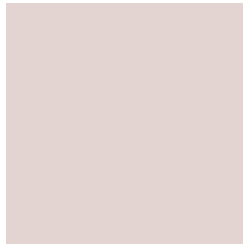
59, 33.400, 217.763



15, 13.898, 213.864

Previews

White Background



This preview shows how the CIELCh color 86, 5.603, 30.435 looks on a white background.

Color Contrast Check

Large Text (above 18pt) WCAG AA × Fail

Any Text WCAG AA × Fail

Large Text (above 18pt) WCAG AAA × Fail

Any Text WCAG AAA × Fail

Black Background



This preview shows how the CIELCh color 86, 5.603, 30.435 looks on a black background.

Color Contrast Check

Large Text (above 18pt) WCAG AA ✓ Pass

Any Text WCAG AA ✓ Pass

Large Text (above 18pt) WCAG AAA ✓ Pass

Any Text WCAG AAA ✓ Pass

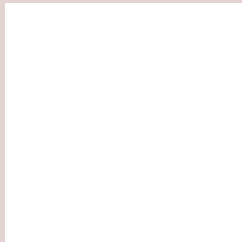
If you want to check with other color combinations, try the [Color Contrast Checker](#).

CIELCh 86, 5.603, 30.435

Background



This preview shows how black text looks on a background with the CIELCh color 86, 5.603, 30.435.



This preview shows how white text looks on a background with the CIELCh color 86, 5.603, 30.435.

Color Blindness Simulation

Color vision deficiency is a very complex topic, and I could not describe the different causes any better than Wikipedia does, so if you want to learn more, you should check out their [article about color blindness](#).

Dichromacy



Original Color

86, 5.603, 30.435

Protanopia

86, 2.676, 55.178

Deuteranopia

86, 10.829, 11.878



Tritanopia
86, 11.491, 329.337

Trichromacy



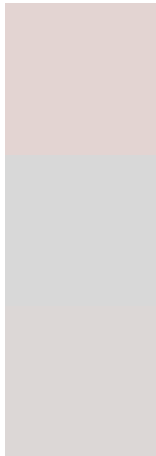
Original Color
86, 5.603, 30.435

Protanomaly
86, 3.793, 35.502

Deuteranomaly
86, 8.907, 13.288

Tritanomaly
86, 8.391, 341.347

Monochromacy



Original Color
86, 5.603, 30.435

Achromatopsia
86, 0.010, 296.813

Achromatomaly
86, 1.880, 35.356

CSS Examples

Text

The CSS property to change the color of the text to CIELCh 86, 5.603, 30.435 is called "color". The color property can be set on classes, ids or directly on the HTML element.

This example shows how text in the color `rgb(227, 212, 210)` looks like.

```
.text, #text, p{  
    color:rgb(227, 212, 210)  
}
```

If you want to add a text shadow in that color use the text-shadow property, you can generate a text shadow directly with our [CSS Text Shadow Generator](#).

Here you see how black text with a 4 pixel rgb(227, 212, 210) colored shadow looks like.

```
.shadow{ text-shadow: 4px 4px 2px rgb(227, 212, 210) }
```

Border

The CSS property to change the border of an element to CIELCh 86, 5.603, 30.435 is called "border". The border property can be set on classes, ids or directly on the HTML element.

This example shows the color as border, it can be applied via the CSS property "border" or "border-color".

```
.border, #border, table{ border:4px solid rgb(227, 212, 210) }
```

If only the border color should be changed use the property border-color.

```
.border{ border-color:rgb(227, 212, 210) }
```

If you want to add a box shadow in that color use:

Here you see how a box with a 4 pixel rgb(227, 212, 210) colored shadow looks like.

```
.boxshadow{ -moz-box-shadow:4px 4px 4px  
4px rgb(227, 212, 210); -webkit-box-  
shadow:4px 4px 4px 4px rgb(227, 212, 210);  
box-shadow:4px 4px 4px 4px rgb(227, 212,  
210) }
```

Background

The CSS property to change the background color of an element to CIELCh 86, 5.603, 30.435 is called "background". The background property can be set on classes, ids or directly on the HTML element.

```
.background, #background, body{  
background: rgb(227, 212, 210) }
```

If only the background color should be changed can be used:

```
.background{ background-color: rgb(227,  
212, 210) }
```

This example shows the color as background, it is applied via the CSS property "background".

To optimize and compress your CSS code, you can use our [online CSS compressor and optimizer](#) based on csstidy. If you want to create a linear or radial gradient as background or border, check our [CSS Gradient Generator](#).

Hey! You found this booklet interesting? Support Converting Colors with the new Membership Option!

The pro membership hides all ads, plus gives you double the colors in the color bucket, and more awesome pro features!

[Learn more, Memberships starting at \\$2.50/m!](#)

**Follow me
on Twitter!**

@ConvertingColor