

Converting Colors

CIELCh(86, 7.850, 0.955)

Have a look what the booklet for
CIELCh(86, 7.850, 0.955) contains.

CIELCh(86, 7.772, 0.276)	3
<i>Conversions</i>	4
<i>Details</i>	6
<i>Harmonies</i>	11
<i>Previews</i>	20
<i>Color Blindness Simulation</i>	23
<i>CSS Examples</i>	26

Color

CIELCh(86, 7.772, 0.276)

Conversions

Conversions Part 1

Format	Color
Hex	E6D2D7
RGB	230, 210, 215
RGB Percent	90%, 82%, 84%
CMY	0.0971, 0.1755, 0.1559
CMYK	0.00, 0.09, 0.07, 0.10
HSL	345°, 29%, 86%
HSV	345°, 9%, 90%
XYZ	68.1075, 67.9871, 73.9791
YIQ	216.5500, 10.3150, 5.7950

Conversions

Conversions Part 2

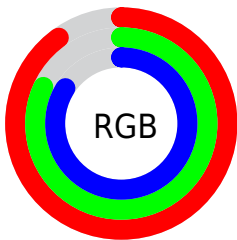
Format	Color
R _Y B	230, 210, 215
Decimal	15127255
CIE Lab	86.00, 7.77, 0.04
CIE LCh	86, 7.772, 0.276
Yxy	67.9871, 0.3242, 0.3236
Android (android.graphics.Color)	4293317335 (0xFFE6D2D7)
YUV	216.5500, -0.7641, 11.7957
Hunter-Lab	82.4543, 3.1466, 4.5222

Details

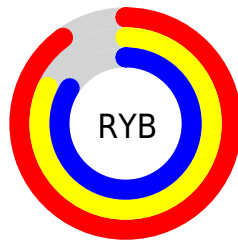
The CIELCh color **86, 7.772, 0.276** is a light color, and the websafe version is hex **CCCCCC**. A complement of this color would be **90, 7.542, 178.805**, and the grayscale version is **87, 0.010, 296.813**.

A 20% lighter version of the original color is **100, 0.012, 296.813**, and **66, 7.312, 2.481** is the 20% darker color. If you saturate the color by 10%, you get **80, 17.097, 1.418**, and if you desaturate by 10%, it is **92, 1.140, 179.898**.

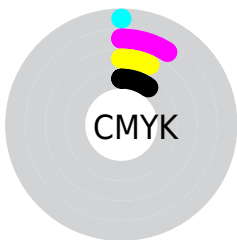
Distribution



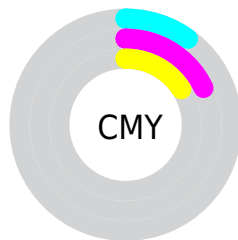
- Red (90%)
- Green (82%)
- Blue (84%)



- Red (90%)
- Yellow (82%)
- Blue (84%)



- Cyan (0%)
- Magenta (9%)
- Yellow (7%)
- Black (10%)



- Cyan (10%)
- Magenta (18%)
- Yellow (16%)

Brightness & Saturation Gradients

These gradients show how the CIELCh color 86, 7.772, 0.276 changes by changing the brightness by 10 percent. The first figure shows a shift by +10% for each color and the second figure -10%.

Similar to the brightness gradients but the following saturation gradients show a change of the CIELCh color 86, 7.772, 0.276 by changing the saturation by 10% instead.

86, 7.772, 0.276

86, 7.772, 0.276

100, 7.772, 0.276

76, 7.772, 0.276

66, 7.772, 0.276

56, 7.772, 0.276

46, 7.772, 0.276

36, 7.772, 0.276

26, 7.772, 0.276

16, 7.772, 0.276

6, 7.772, 0.276

0, 7.772, 0.276

86, 7.772, 0.276

86, 7.772, 0.276

80, 17.097, 1.418

92, 1.140, 179.898

74, 26.772, 2.721

98, 8.972, 181.604

68, 36.649, 4.283

98, 8.443, 198.950

63, 46.488, 6.199

59, 55.939, 8.596

55, 64.585, 11.632

52, 72.047, 15.473

50, 78.170, 20.212

49, 83.239, 25.665

Harmonies

Complementary

The Complementary color scheme is a pair of colors which are on the opposite of each other on the color wheel.



86, 7.772, 0.276



90, 7.542, 178.805

Rectangle

The Rectangle color scheme consists of four colors that form a rectangle on the color wheel.



86, 7.772, 0.276



86, 7.772, 50.276



86, 7.772, 180.276



86, 7.772, 230.276

Sweetspot

The Sweet Spot groups the original color and five complimentary colors.



86, 7.770, 0.286



98, 2.878, 359.601



86, 11.829, 317.648



52, 2.185, 359.720



0, 0.000, 0.000



53, 0.007, 296.813

Same Dimension

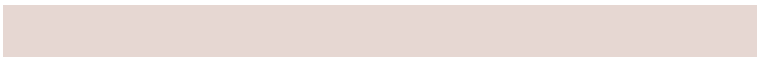
The Same Dimension uses a secret algorithm to generate beautiful new colors.



86, 7.770, 0.286



93, 9.748, 0.436



87, 6.096, 44.950



45, 5.076, 0.370



37, 68.851, 25.330



7, 26.640, 11.129

Inverse Universe

The Inverse Universe completely reimagines the original color for something new.



86, 7.770, 0.286



93, 9.748, 0.436



89, 5.793, 225.969



45, 5.076, 0.370



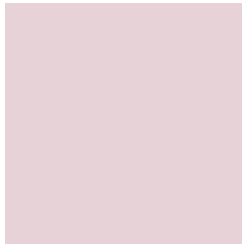
37, 68.851, 25.330



7, 26.640, 11.129

Previews

White Background



This preview shows how the CIELCh color 86, 7.772, 0.276 looks on a white background.

Color Contrast Check

Large Text (above 18pt) WCAG AA × Fail

Any Text WCAG AA × Fail

Large Text (above 18pt) WCAG AAA × Fail

Any Text WCAG AAA × Fail

Black Background



This preview shows how the CIELCh color 86, 7.772, 0.276 looks on a black background.

Color Contrast Check

Large Text (above 18pt) WCAG AA ✓ Pass

Any Text WCAG AA ✓ Pass

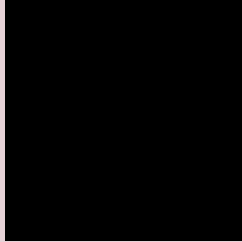
Large Text (above 18pt) WCAG AAA ✓ Pass

Any Text WCAG AAA ✓ Pass

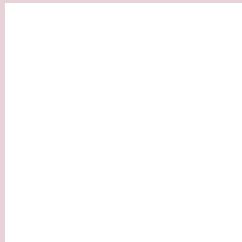
If you want to check with other color combinations, try the [Color Contrast Checker](#).

CIELCh 86, 7.772, 0.276

Background



This preview shows how black text looks on a background with the CIELCh color 86, 7.772, 0.276.

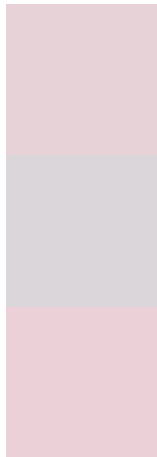


This preview shows how white text looks on a background with the CIELCh color 86, 7.772, 0.276.

Color Blindness Simulation

Color vision deficiency is a very complex topic, and I could not describe the different causes any better than Wikipedia does, so if you want to learn more, you should check out their [article about color blindness](#).

Dichromacy



Original Color

86, 7.772, 0.276

Protanopia

86, 2.153, 332.298

Deuteranopia

86, 11.081, 358.067



Tritanopia
86, 11.821, 335.114

Trichromacy



Original Color

86, 7.772, 0.276

Protanomaly

86, 3.636, 353.925

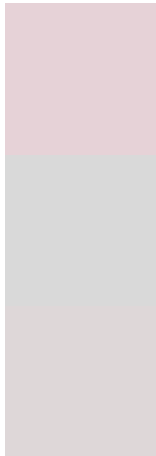
Deuteranomaly

86, 9.859, 358.340

Tritanomaly

86, 10.177, 342.004

Monochromacy



Original Color

86, 7.772, 0.276

Achromatopsia

87, 0.010, 296.813

Achromatomaly

87, 2.596, 7.754

CSS Examples

Text

The CSS property to change the color of the text to CIELCh 86, 7.772, 0.276 is called "color". The color property can be set on classes, ids or directly on the HTML element.

This example shows how text in the color `rgb(230, 210, 215)` looks like.

```
.text, #text, p{  
    color:rgb(230, 210, 215)  
}
```

If you want to add a text shadow in that color use the text-shadow property, you can generate a text shadow directly with our [CSS Text Shadow Generator](#).

Here you see how black text with a 4 pixel rgb(230, 210, 215) colored shadow looks like.

```
.shadow{ text-shadow: 4px 4px 2px rgb(230, 210, 215) }
```

Border

The CSS property to change the border of an element to CIELCh 86, 7.772, 0.276 is called "border". The border property can be set on classes, ids or directly on the HTML element.

This example shows the color as border, it can be applied via the CSS property "border" or "border-color".

```
.border, #border, table{ border:4px solid rgb(230, 210, 215) }
```

If only the border color should be changed use the property `border-color`.

```
.border{ border-color:rgb(230, 210, 215) }
```

If you want to add a box shadow in that color use:

Here you see how a box with a 4 pixel `rgb(230, 210, 215)` colored shadow looks like.

```
.boxshadow{ -moz-box-shadow:4px 4px 4px  
4px rgb(230, 210, 215); -webkit-box-  
shadow:4px 4px 4px 4px rgb(230, 210, 215);  
box-shadow:4px 4px 4px 4px rgb(230, 210,  
215) }
```

Background

The CSS property to change the background color of an element to CIELCh 86, 7.772, 0.276 is called "background". The background property can be set on classes, ids or directly on the HTML element.

```
.background, #background, body{  
background: rgb(230, 210, 215) }
```

If only the background color should be changed can be used:

```
.background{ background-color: rgb(230,  
210, 215) }
```

This example shows the color as background, it is applied via the CSS property "background".

To optimize and compress your CSS code, you can use our [online CSS compressor and optimizer](#) based on csstidy. If you want to create a linear or radial gradient as background or border, check our [CSS Gradient Generator](#).

Hey! You found this booklet interesting? Support Converting Colors with the new Membership Option!

The pro membership hides all ads, plus gives you double the colors in the color bucket, and more awesome pro features!

[Learn more, Memberships starting at \\$2.50/m!](#)

**Follow me
on Twitter!**

@ConvertingColor