

Converting Colors

CIELCh(86, 7.853, 10.587)

Have a look what the booklet for
CIELCh(86, 7.853, 10.587) contains.

CIELCh(86, 7.865, 8.441)	3
<i>Conversions</i>	4
<i>Details</i>	6
<i>Harmonies</i>	11
<i>Previews</i>	20
<i>Color Blindness Simulation</i>	23
<i>CSS Examples</i>	26

Color

CIELCh(86, 7.865, 8.441)

Conversions

Conversions Part 1

Format	Color
Hex	E7D2D5
RGB	231, 210, 213
RGB Percent	91%, 82%, 84%
CMY	0.0935, 0.1759, 0.1641
CMYK	0.00, 0.09, 0.08, 0.09
HSL	351°, 31%, 87%
HSV	351°, 9%, 91%
XYZ	68.1111, 67.9871, 72.5780
YIQ	216.6210, 11.5530, 5.3850

Conversions

Conversions Part 2

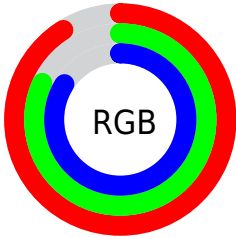
Format	Color
RYP	231, 210, 213
Decimal	15192789
CIE Lab	86.00, 7.78, 1.15
CIE LCh	86, 7.865, 8.441
Yxy	67.9871, 0.3264, 0.3258
Android (android.graphics.Color)	4293382869 (0xFFE7D2D5)
YUV	216.6210, -1.7852, 12.6104
Hunter-Lab	82.4543, 3.1544, 5.5297

Details

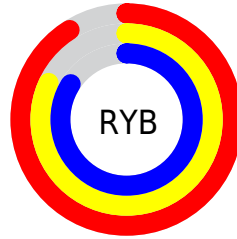
The CIELCh color **86, 7.865, 8.441** is a light color, and the websafe version is hex **CCCCCC**. A complement of this color would be **90, 7.538, 187.033**, and the grayscale version is **87, 0.010, 296.813**.

A 20% lighter version of the original color is **100, 0.012, 296.813**, and **66, 7.472, 11.573** is the 20% darker color. If you saturate the color by 10%, you get **80, 17.016, 9.548**, and if you desaturate by 10%, it is **92, 0.764, 188.411**.

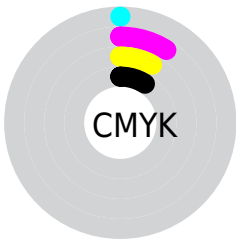
Distribution



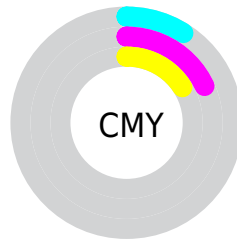
- Red (91%)
- Green (82%)
- Blue (84%)



- Red (91%)
- Yellow (82%)
- Blue (84%)



- Cyan (0%)
- Magenta (9%)
- Yellow (8%)
- Black (9%)



- Cyan (9%)
- Magenta (18%)
- Yellow (16%)

Brightness & Saturation Gradients

These gradients show how the CIELCh color 86, 7.865, 8.441 changes by changing the brightness by 10 percent. The first figure shows a shift by +10% for each color and the second figure -10%.

Similar to the brightness gradients but the following saturation gradients show a change of the CIELCh color 86, 7.865, 8.441 by changing the saturation by 10% instead.

86, 7.865, 8.441

86, 7.865, 8.441

100, 7.865, 8.441

76, 7.865, 8.441

66, 7.865, 8.441

56, 7.865, 8.441

46, 7.865, 8.441

36, 7.865, 8.441

26, 7.865, 8.441

16, 7.865, 8.441

6, 7.865, 8.441

0, 7.865, 8.441

86, 7.865, 8.441

86, 7.865, 8.441

80, 17.016, 9.548

92, 0.764, 188.411

74, 26.656, 10.842

98, 8.271, 191.059

68, 36.678, 12.433

98, 8.140, 198.972

63, 46.883, 14.427

58, 56.974, 16.958

54, 66.584, 20.169

51, 75.373, 24.163

49, 83.127, 28.869

48, 89.761, 33.766

Harmonies

Complementary

The Complementary color scheme is a pair of colors which are on the opposite of each other on the color wheel.



86, 7.865, 8.441



90, 7.538, 187.033

Rectangle

The Rectangle color scheme consists of four colors that form a rectangle on the color wheel.



86, 7.865, 8.441



86, 7.865, 58.441



86, 7.865, 188.441



86, 7.865, 238.441

Sweetspot

The Sweet Spot groups the original color and five complimentary colors.



86, 7.863, 8.454



98, 2.762, 7.746



86, 12.768, 320.685



52, 2.099, 7.865



0, 0.000, 0.000



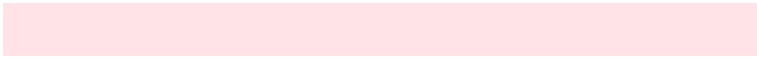
53, 0.007, 296.813

Same Dimension

The Same Dimension uses a secret algorithm to generate beautiful new colors.



86, 7.863, 8.454



93, 10.372, 8.660



88, 6.305, 56.905



45, 4.893, 8.492



37, 73.756, 33.278



7, 26.738, 15.827

Inverse Universe

The Inverse Universe completely reimagines the original color for something new.



86, 7.863, 8.454



93, 10.372, 8.660



88, 6.041, 238.717



45, 4.893, 8.492



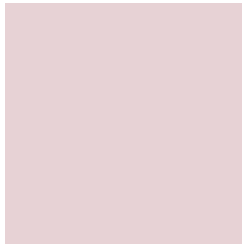
37, 73.756, 33.278



7, 26.738, 15.827

Previews

White Background



This preview shows how the CIELCh color 86, 7.865, 8.441 looks on a white background.

Color Contrast Check

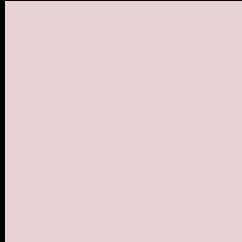
Large Text (above 18pt) WCAG AA × Fail

Any Text WCAG AA × Fail

Large Text (above 18pt) WCAG AAA × Fail

Any Text WCAG AAA × Fail

Black Background



This preview shows how the CIELCh color 86, 7.865, 8.441 looks on a black background.

Color Contrast Check

Large Text (above 18pt) WCAG AA ✓ Pass

Any Text WCAG AA ✓ Pass

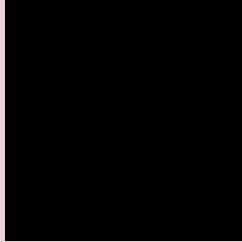
Large Text (above 18pt) WCAG AAA ✓ Pass

Any Text WCAG AAA ✓ Pass

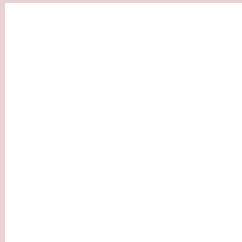
If you want to check with other color combinations, try the [Color Contrast Checker](#).

CIELCh 86, 7.865, 8.441

Background



This preview shows how black text looks on a background with the CIELCh color 86, 7.865, 8.441.



This preview shows how white text looks on a background with the CIELCh color 86, 7.865, 8.441.

Color Blindness Simulation

Color vision deficiency is a very complex topic, and I could not describe the different causes any better than Wikipedia does, so if you want to learn more, you should check out their [article about color blindness](#).

Dichromacy



Original Color


86, 7.865, 8.441

Protanopia

86, 1.892, 3.167

Deuteranopia

86, 10.759, 3.262



Tritanopia
86, 12.705, 335.829

Trichromacy



Original Color

86, 7.865, 8.441

Protanomaly

86, 3.680, 11.353

Deuteranomaly

86, 9.544, 4.207

Tritanomaly

86, 10.465, 343.274

Monochromacy



Original Color

86, 7.865, 8.441

Achromatopsia

87, 0.010, 296.813

Achromatomaly

87, 2.596, 7.754

CSS Examples

Text

The CSS property to change the color of the text to CIELCh 86, 7.865, 8.441 is called "color". The color property can be set on classes, ids or directly on the HTML element.

This example shows how text in the color `rgb(231, 210, 213)` looks like.

```
.text, #text, p{  
    color:rgb(231, 210, 213)  
}
```

If you want to add a text shadow in that color use the text-shadow property, you can generate a text shadow directly with our [CSS Text Shadow Generator](#).

Here you see how black text with a 4 pixel rgb(231, 210, 213) colored shadow looks like.

```
.shadow{ text-shadow: 4px 4px 2px rgb(231, 210, 213) }
```

Border

The CSS property to change the border of an element to CIELCh 86, 7.865, 8.441 is called "border". The border property can be set on classes, ids or directly on the HTML element.

This example shows the color as border, it can be applied via the CSS property "border" or "border-color".

```
.border, #border, table{ border:4px solid rgb(231, 210, 213) }
```

If only the border color should be changed use the property `border-color`.

```
.border{ border-color:rgb(231, 210, 213) }
```

If you want to add a box shadow in that color use:

Here you see how a box with a 4 pixel `rgb(231, 210, 213)` colored shadow looks like.

```
.boxshadow{ -moz-box-shadow:4px 4px 4px  
4px rgb(231, 210, 213); -webkit-box-  
shadow:4px 4px 4px 4px rgb(231, 210, 213);  
box-shadow:4px 4px 4px 4px rgb(231, 210,  
213) }
```

Background

The CSS property to change the background color of an element to CIELCh 86, 7.865, 8.441 is called "background". The background property can be set on classes, ids or directly on the HTML element.

```
.background, #background, body{  
background: rgb(231, 210, 213) }
```

If only the background color should be changed can be used:

```
.background{ background-color: rgb(231,  
210, 213) }
```

This example shows the color as background, it is applied via the CSS property "background".

To optimize and compress your CSS code, you can use our [online CSS compressor and optimizer](#) based on csstidy. If you want to create a linear or radial gradient as background or border, check our [CSS Gradient Generator](#).

Hey! You found this booklet interesting? Support Converting Colors with the new Membership Option!

The pro membership hides all ads, plus gives you double the colors in the color bucket, and more awesome pro features!

[Learn more, Memberships starting at \\$2.50/m!](#)

**Follow me
on Twitter!**

@ConvertingColor