

Converting Colors

CIELCh(86, 8.207, 59.146)

Have a look what the booklet for
CIELCh(86, 8.207, 59.146) contains.

CIELCh(86, 8.213, 59.129)	3
<i>Conversions</i>	4
<i>Details</i>	6
<i>Harmonies</i>	11
<i>Previews</i>	20
<i>Color Blindness Simulation</i>	23
<i>CSS Examples</i>	26

Color

CIELCh(86, 8.213, 59.129)

Conversions

Conversions Part 1

Format	Color
Hex	E5D4CA
RGB	229, 212, 202
RGB Percent	90%, 83%, 79%
CMY	0.1021, 0.1687, 0.2080
CMYK	0.00, 0.07, 0.12, 0.10
HSL	22°, 34%, 84%
HSV	22°, 12%, 90%
XYZ	66.4957, 67.9871, 65.4764
YIQ	215.9430, 13.3420, 0.4940

Conversions

Conversions Part 2

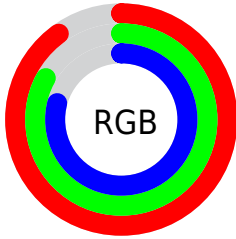
Format	Color
R _Y B	229, 218, 202
Decimal	15062218
CIE Lab	86.00, 4.21, 7.05
CIE LCh	86, 8.213, 59.129
Yxy	67.9871, 0.3325, 0.3400
Android (android.graphics.Color)	4293252298 (0xFFE5D4CA)
YUV	215.9430, -6.8739, 11.4510
Hunter-Lab	82.4543, -0.3427, 10.6362

Details

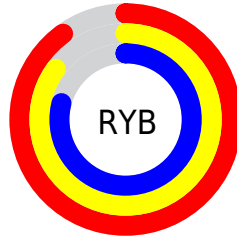
The CIELCh color **86, 8.213, 59.129** is a light color, and the websafe version is hex **CCCCCC**. A complement of this color would be **86, 7.785, 241.606**, and the grayscale version is **86, 0.010, 296.813**.

A 20% lighter version of the original color is **100, 0.012, 296.813**, and **66, 8.071, 57.696** is the 20% darker color. If you saturate the color by 10%, you get **82, 15.705, 58.280**, and if you desaturate by 10%, it is **90, 1.203, 59.707**.

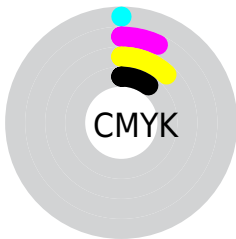
Distribution



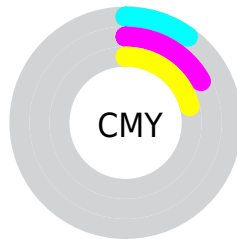
- Red (90%)
- Green (83%)
- Blue (79%)



- Red (90%)
- Yellow (85%)
- Blue (79%)



- Cyan (0%)
- Magenta (7%)
- Yellow (12%)
- Black (10%)

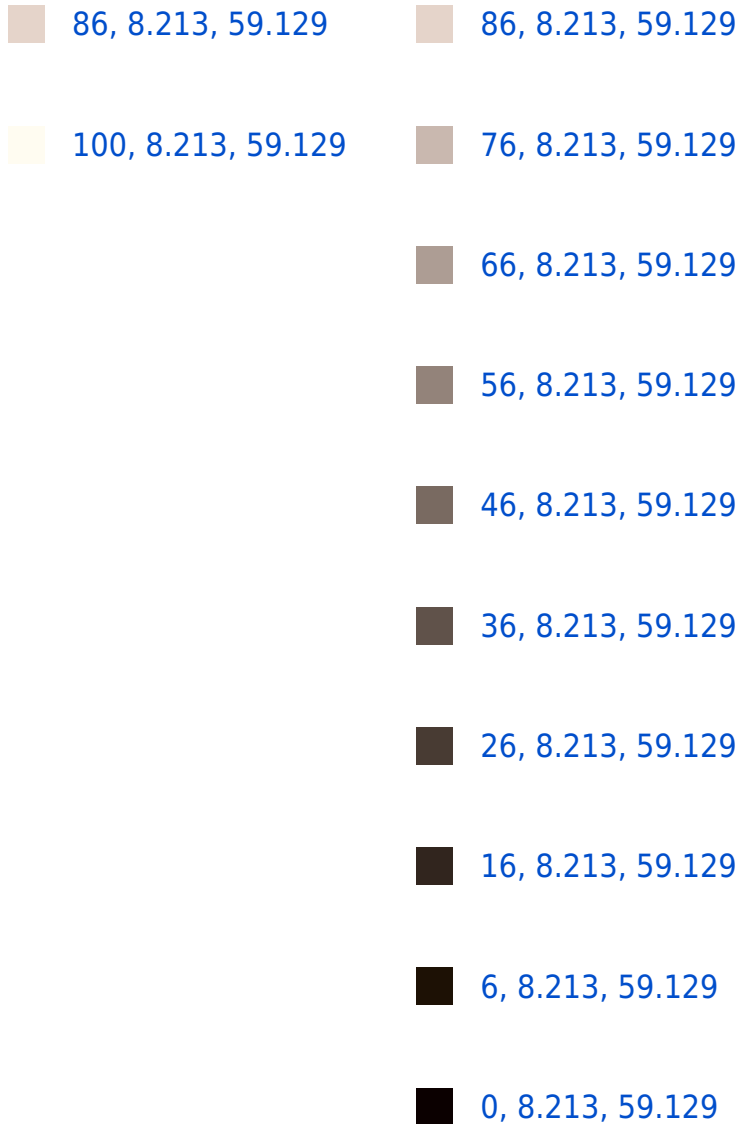


- Cyan (10%)
- Magenta (17%)
- Yellow (21%)

Brightness & Saturation Gradients

These gradients show how the CIELCh color 86, 8.213, 59.129 changes by changing the brightness by 10 percent. The first figure shows a shift by +10% for each color and the second figure -10%.

Similar to the brightness gradients but the following saturation gradients show a change of the CIELCh color 86, 8.213, 59.129 by changing the saturation by 10% instead.



86, 8.213, 59.129

86, 8.213, 59.129

82, 15.705, 58.280

90, 1.203, 59.707

78, 23.722, 57.436

94, 5.376, 241.167

74, 32.296, 56.644

98, 8.863, 198.920

70, 41.424, 55.914

67, 51.033, 55.235

63, 60.910, 54.553

60, 70.550, 53.710

57, 78.927, 52.356

55, 84.252, 50.743

Harmonies

Complementary

The Complementary color scheme is a pair of colors which are on the opposite of each other on the color wheel.



86, 8.213, 59.129



86, 7.785, 241.606

Rectangle

The Rectangle color scheme consists of four colors that form a rectangle on the color wheel.



86, 8.213, 59.129



86, 8.213, 109.129



86, 8.213, 239.129



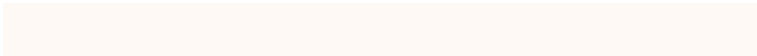
86, 8.213, 289.129

Sweetspot

The Sweet Spot groups the original color and five complimentary colors.



86, 8.213, 59.148



98, 2.960, 59.738



84, 13.328, 337.955



52, 2.110, 59.698



0, 0.000, 0.000



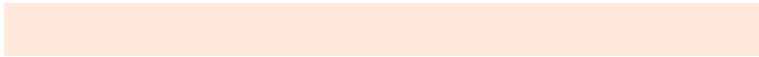
53, 0.007, 296.813

Same Dimension

The Same Dimension uses a secret algorithm to generate beautiful new colors.



86, 8.213, 59.148



94, 10.724, 58.950



89, 12.183, 102.849



46, 3.932, 59.346



43, 69.539, 51.360



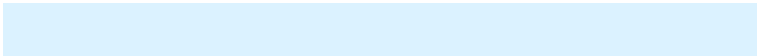
10, 21.521, 47.045

Inverse Universe

The Inverse Universe completely reimagines the original color for something new.



86, 7.785, 241.606



94, 10.047, 241.874



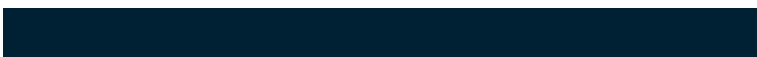
83, 12.416, 285.512



46, 3.771, 241.351



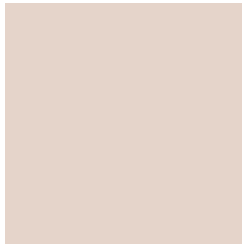
46, 42.443, 267.931



11, 16.051, 258.443

Previews

White Background



This preview shows how the CIELCh color 86, 8.213, 59.129 looks on a white background.

Color Contrast Check

Large Text (above 18pt) WCAG AA × Fail

Any Text WCAG AA × Fail

Large Text (above 18pt) WCAG AAA × Fail

Any Text WCAG AAA × Fail

Black Background



This preview shows how the CIE LCh color 86, 8.213, 59.129 looks on a black background.

Color Contrast Check

Large Text (above 18pt) WCAG AA ✓ Pass

Any Text WCAG AA ✓ Pass

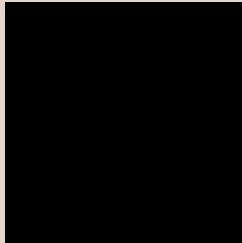
Large Text (above 18pt) WCAG AAA ✓ Pass

Any Text WCAG AAA ✓ Pass

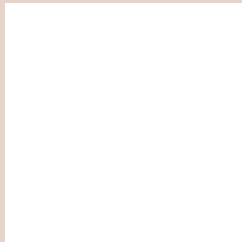
If you want to check with other color combinations, try the [Color Contrast Checker](#).

CIELCh 86, 8.213, 59.129

Background



This preview shows how black text looks on a background with the CIELCh color 86, 8.213, 59.129.

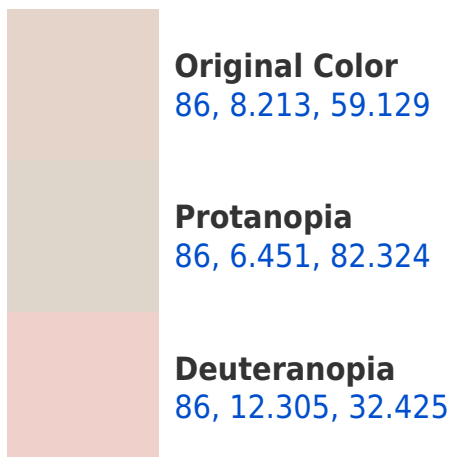


This preview shows how white text looks on a background with the CIELCh color 86, 8.213, 59.129.

Color Blindness Simulation

Color vision deficiency is a very complex topic, and I could not describe the different causes any better than Wikipedia does, so if you want to learn more, you should check out their [article about color blindness](#).

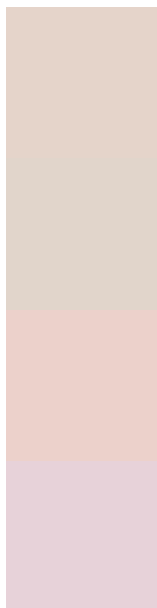
Dichromacy





Tritanopia
86, 11.821, 335.114

Trichromacy



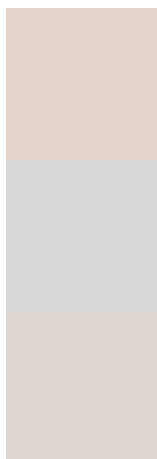
Original Color
86, 8.213, 59.129

Protanomaly
86, 6.854, 69.152

Deuteranomaly
86, 10.592, 37.220

Tritanomaly
86, 8.500, 354.490

Monochromacy



Original Color
86, 8.213, 59.129

Achromatopsia
86, 0.010, 296.813

Achromatomaly
86, 3.009, 63.277

CSS Examples

Text

The CSS property to change the color of the text to CIELCh 86, 8.213, 59.129 is called "color". The color property can be set on classes, ids or directly on the HTML element.

This example shows how text in the color `rgb(229, 212, 202)` looks like.

```
.text, #text, p{  
    color:rgb(229, 212, 202)  
}
```

If you want to add a text shadow in that color use the text-shadow property, you can generate a text shadow directly with our [CSS Text Shadow Generator](#).

Here you see how black text with a 4 pixel rgb(229, 212, 202) colored shadow looks like.

```
.shadow{ text-shadow: 4px 4px 2px rgb(229, 212, 202) }
```

Border

The CSS property to change the border of an element to CIELCh 86, 8.213, 59.129 is called "border". The border property can be set on classes, ids or directly on the HTML element.

This example shows the color as border, it can be applied via the CSS property "border" or "border-color".

```
.border, #border, table{ border:4px solid rgb(229, 212, 202) }
```

If only the border color should be changed use the property `border-color`.

```
.border{ border-color:rgb(229, 212, 202) }
```

If you want to add a box shadow in that color use:

Here you see how a box with a 4 pixel `rgb(229, 212, 202)` colored shadow looks like.

```
.boxshadow{ -moz-box-shadow:4px 4px 4px  
4px rgb(229, 212, 202); -webkit-box-  
shadow:4px 4px 4px 4px rgb(229, 212, 202);  
box-shadow:4px 4px 4px 4px rgb(229, 212,  
202) }
```

Background

The CSS property to change the background color of an element to CIELCh 86, 8.213, 59.129 is called "background". The background property can be set on classes, ids or directly on the HTML element.

```
.background, #background, body{  
background: rgb(229, 212, 202) }
```

If only the background color should be changed can be used:

```
.background{ background-color: rgb(229,  
212, 202) }
```

This example shows the color as background, it is applied via the CSS property "background".

To optimize and compress your CSS code, you can use our [online CSS compressor and optimizer](#) based on csstidy. If you want to create a linear or radial gradient as background or border, check our [CSS Gradient Generator](#).

Hey! You found this booklet interesting? Support Converting Colors with the new Membership Option!

The pro membership hides all ads, plus gives you double the colors in the color bucket, and more awesome pro features!

[Learn more, Memberships starting at \\$2.50/m!](#)

**Follow me
on Twitter!**

@ConvertingColor