

Converting Colors

CIELCh(86, 8.249, 31.289)

Have a look what the booklet for
CIELCh(86, 8.249, 31.289) contains.

CIELCh(86, 8.304, 30.781)	3
<i>Conversions</i>	4
<i>Details</i>	6
<i>Harmonies</i>	11
<i>Previews</i>	20
<i>Color Blindness Simulation</i>	23
<i>CSS Examples</i>	26

Color

CIELCh(86, 8.304, 30.781)

Conversions

Conversions Part 1

Format	Color
Hex	E8D2CF
RGB	232, 210, 207
RGB Percent	91%, 82%, 81%
CMY	0.0889, 0.1752, 0.1870
CMYK	0.00, 0.09, 0.11, 0.09
HSL	7°, 36%, 86%
HSV	7°, 11%, 91%
XYZ	67.8167, 67.9871, 68.7886
YIQ	216.2360, 14.0750, 3.7310

Conversions

Conversions Part 2

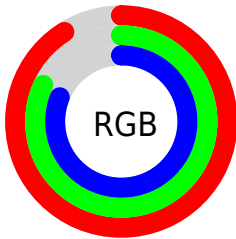
Format	Color
R _Y B	232, 210, 207
Decimal	15258319
CIE Lab	86.00, 7.13, 4.25
CIE LCh	86, 8.304, 30.781
Yxy	67.9871, 0.3315, 0.3323
Android (android.graphics.Color)	4293448399 (0xFFE8D2CF)
YUV	216.2360, -4.5533, 13.8250
Hunter-Lab	82.4543, 2.5171, 8.2545

Details

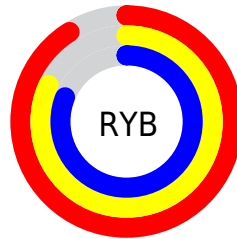
The CIELCh color **86, 8.304, 30.781** is a light color, and the websafe version is hex **CCCCCC**. A complement of this color would be **90, 7.738, 210.665**, and the grayscale version is **87, 0.010, 296.813**.

A 20% lighter version of the original color is **100, 0.012, 296.813**, and **66, 8.047, 31.883** is the 20% darker color. If you saturate the color by 10%, you get **80, 16.701, 31.161**, and if you desaturate by 10%, it is **92, 0.565, 29.584**.

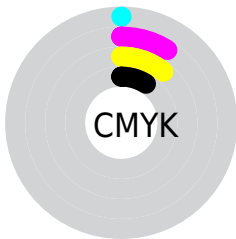
Distribution



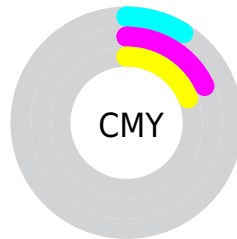
- Red (91%)
- Green (82%)
- Blue (81%)



- Red (91%)
- Yellow (82%)
- Blue (81%)



- Cyan (0%)
- Magenta (9%)
- Yellow (11%)
- Black (9%)

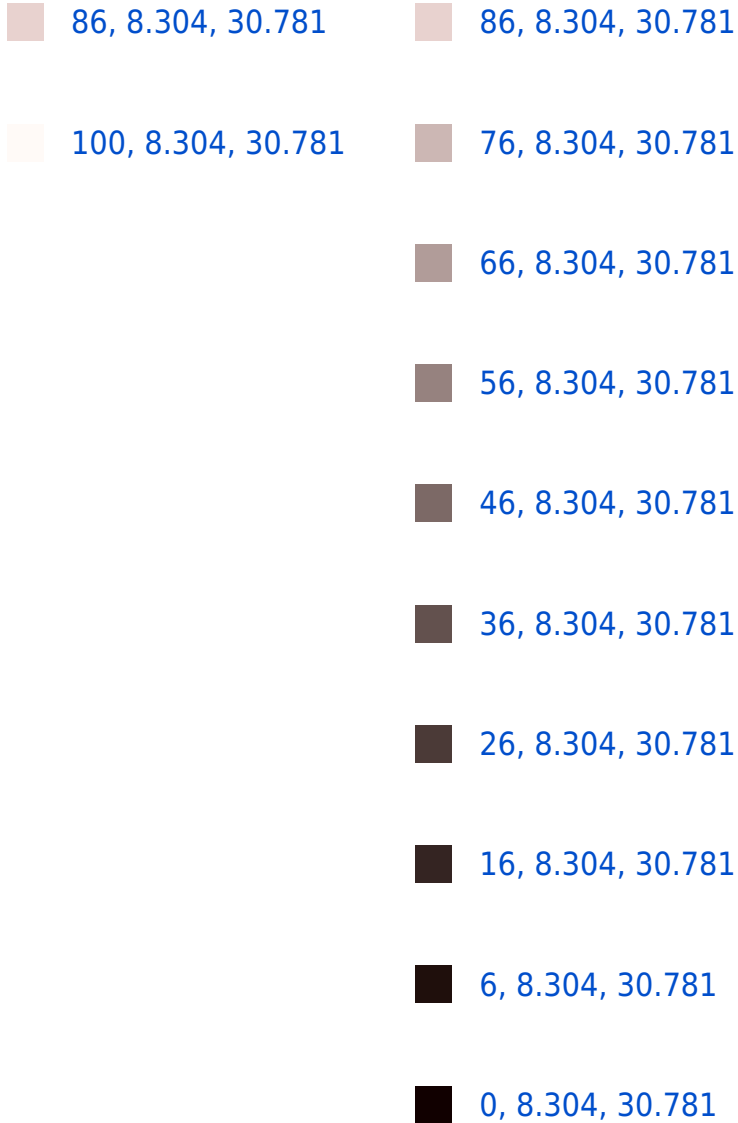


- Cyan (9%)
- Magenta (18%)
- Yellow (19%)

Brightness & Saturation Gradients

These gradients show how the CIELCh color 86, 8.304, 30.781 changes by changing the brightness by 10 percent. The first figure shows a shift by +10% for each color and the second figure -10%.

Similar to the brightness gradients but the following saturation gradients show a change of the CIELCh color 86, 8.304, 30.781 by changing the saturation by 10% instead.



86, 8.304, 30.781

86, 8.304, 30.781

80, 16.701, 31.161

92, 0.565, 29.584

75, 25.801, 31.682

97, 6.570, 210.694

70, 35.610, 32.431

98, 7.743, 199.001

65, 46.084, 33.474

61, 57.095, 34.864

57, 68.384, 36.612

53, 79.434, 38.595

51, 89.122, 40.353

50, 95.478, 41.300

Harmonies

Complementary

The Complementary color scheme is a pair of colors which are on the opposite of each other on the color wheel.



86, 8.304, 30.781



90, 7.738, 210.665

Rectangle

The Rectangle color scheme consists of four colors that form a rectangle on the color wheel.



86, 8.304, 30.781



86, 8.304, 80.781



86, 8.304, 210.781



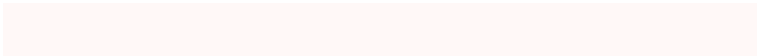
86, 8.304, 260.781

Sweetspot

The Sweet Spot groups the original color and five complimentary colors.



86, 8.303, 30.797



98, 2.416, 30.441



86, 14.686, 328.393



52, 1.838, 30.512



0, 0.000, 0.000



53, 0.007, 296.813

Same Dimension

The Same Dimension uses a secret algorithm to generate beautiful new colors.



86, 8.303, 30.797



92, 10.918, 30.873



89, 8.738, 85.515



46, 4.393, 30.756



39, 78.907, 41.556



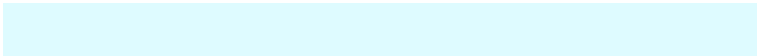
8, 26.186, 29.407

Inverse Universe

The Inverse Universe completely reimagines the original color for something new.



90, 7.738, 210.665



97, 10.014, 210.647



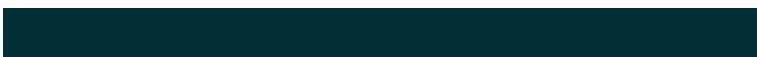
86, 8.673, 268.408



48, 4.131, 210.680



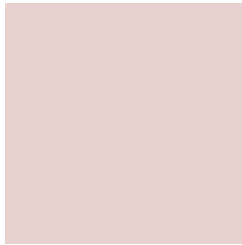
60, 34.068, 218.287



17, 14.752, 214.688

Previews

White Background



This preview shows how the CIELCh color 86, 8.304, 30.781 looks on a white background.

Color Contrast Check

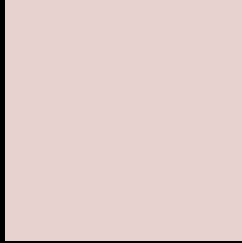
Large Text (above 18pt) WCAG AA × Fail

Any Text WCAG AA × Fail

Large Text (above 18pt) WCAG AAA × Fail

Any Text WCAG AAA × Fail

Black Background



This preview shows how the CIELCh color 86, 8.304, 30.781 looks on a black background.

Color Contrast Check

Large Text (above 18pt) WCAG AA ✓ Pass

Any Text WCAG AA ✓ Pass

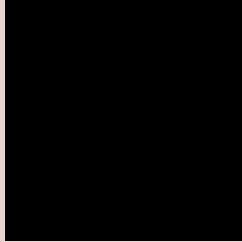
Large Text (above 18pt) WCAG AAA ✓ Pass

Any Text WCAG AAA ✓ Pass

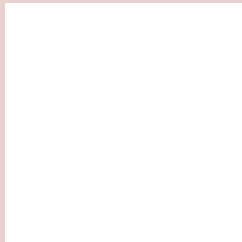
If you want to check with other color combinations, try the [Color Contrast Checker](#).

CIELCh 86, 8.304, 30.781

Background



This preview shows how black text looks on a background with the CIELCh color 86, 8.304, 30.781.

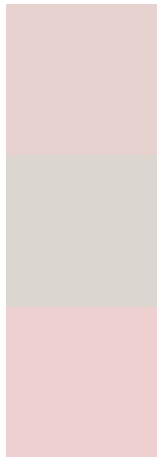


This preview shows how white text looks on a background with the CIELCh color 86, 8.304, 30.781.

Color Blindness Simulation

Color vision deficiency is a very complex topic, and I could not describe the different causes any better than Wikipedia does, so if you want to learn more, you should check out their [article about color blindness](#).

Dichromacy



Original Color


86, 8.304, 30.781

Protanopia

86, 3.395, 69.641

Deuteranopia

86, 11.529, 20.221



Tritanopia
86, 12.888, 339.835

Trichromacy



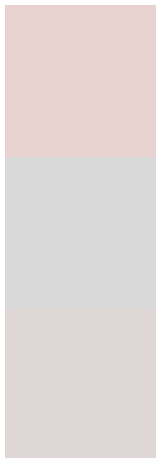
Original Color
86, 8.304, 30.781

Protanomaly
86, 4.801, 52.491

Deuteranomaly
86, 10.413, 22.986

Tritanomaly
86, 10.273, 352.897

Monochromacy



Original Color
86, 8.304, 30.781

Achromatopsia
87, 0.010, 296.813

Achromatomaly
87, 3.085, 39.195

CSS Examples

Text

The CSS property to change the color of the text to CIELCh 86, 8.304, 30.781 is called "color". The color property can be set on classes, ids or directly on the HTML element.

This example shows how text in the color `rgb(232, 210, 207)` looks like.

```
.text, #text, p{  
    color:rgb(232, 210, 207)  
}
```

If you want to add a text shadow in that color use the text-shadow property, you can generate a text shadow directly with our [CSS Text Shadow Generator](#).

Here you see how black text with a 4 pixel rgb(232, 210, 207) colored shadow looks like.

```
.shadow{ text-shadow: 4px 4px 2px rgb(232, 210, 207) }
```

Border

The CSS property to change the border of an element to CIELCh 86, 8.304, 30.781 is called "border". The border property can be set on classes, ids or directly on the HTML element.

This example shows the color as border, it can be applied via the CSS property "border" or "border-color".

```
.border, #border, table{ border:4px solid rgb(232, 210, 207) }
```

If only the border color should be changed use the property `border-color`.

```
.border{ border-color:rgb(232, 210, 207) }
```

If you want to add a box shadow in that color use:

Here you see how a box with a 4 pixel `rgb(232, 210, 207)` colored shadow looks like.

```
.boxshadow{ -moz-box-shadow:4px 4px 4px  
4px rgb(232, 210, 207); -webkit-box-  
shadow:4px 4px 4px 4px rgb(232, 210, 207);  
box-shadow:4px 4px 4px 4px rgb(232, 210,  
207) }
```

Background

The CSS property to change the background color of an element to CIELCh 86, 8.304, 30.781 is called "background". The background property can be set on classes, ids or directly on the HTML element.

```
.background, #background, body{  
background: rgb(232, 210, 207) }
```

If only the background color should be changed can be used:

```
.background{ background-color: rgb(232,  
210, 207) }
```

This example shows the color as background, it is applied via the CSS property "background".

To optimize and compress your CSS code, you can use our [online CSS compressor and optimizer](#) based on csstidy. If you want to create a linear or radial gradient as background or border, check our [CSS Gradient Generator](#).

Hey! You found this booklet interesting? Support Converting Colors with the new Membership Option!

The pro membership hides all ads, plus gives you double the colors in the color bucket, and more awesome pro features!

[Learn more, Memberships starting at \\$2.50/m!](#)

**Follow me
on Twitter!**

@ConvertingColor