

# Converting Colors

CIELCh(86, 8.524, 346.623)

Have a look what the booklet for  
CIELCh(86, 8.524, 346.623) contains.

<b>CIELCh(86, 8.679, 347.143)</b> .....	3
<i><b>Conversions</b></i> .....	4
<i><b>Details</b></i> .....	6
<i><b>Harmonies</b></i> .....	12
<i><b>Previews</b></i> .....	21
<i><b>Color Blindness Simulation</b></i> .....	24
<i><b>CSS Examples</b></i> .....	27

# Color

**CIELCh(86, 8.679, 347.143)**

# Conversions

## Conversions Part 1

Format	Color
Hex	E6D2DB
RGB	230, 210, 219
RGB Percent	90%, 82%, 86%
CMY	0.0983, 0.1767, 0.1414
CMYK	0.00, 0.09, 0.05, 0.10
HSL	333°, 29%, 86%
HSV	333°, 9%, 90%
XYZ	68.4229, 67.9871, 76.4921
YIQ	217.0060, 9.0310, 7.0390

# Conversions

## Conversions Part 2

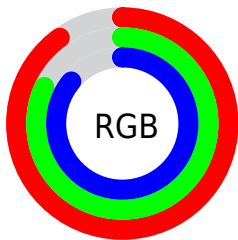
<b>Format</b>	<b>Color</b>
<b>R<sub>YB</sub></b>	230, 210, 219
Decimal	15127259
CIE <sub>Lab</sub>	86.00, 8.46, -1.93
CIE <sub>LCh</sub>	86, 8.679, 347.143
Yxy	67.9871, 0.3214, 0.3193
Android (android.graphics.Color)	4293317339 (0xFFE6D2DB)
YUV	217.0060, 0.9830, 11.3957
Hunter-Lab	82.4543, 3.8293, 2.7152

# Details

The CIELCh color  $86, 8.679, 347.143$  is a light color, and the websafe version is hex `CCCCCC`. A complement of this color would be  $90, 8.550, 165.742$ , and the grayscale version is  $87, 0.010, 296.813$ .

A 20% lighter version of the original color is  $100, 0.012, 296.813$ , and  $66, 8.217, 347.611$  is the 20% darker color. If you saturate the color by 10%, you get  $80, 18.892, 348.148$ , and if you desaturate by 10%, it is  $92, 1.273, 166.706$ .

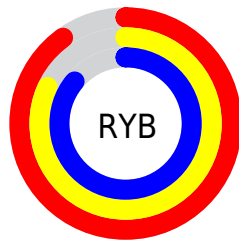
# Distribution



Red (90%)

Green (82%)

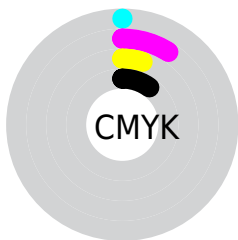
Blue (86%)



Red (90%)

Yellow (82%)

Blue (86%)

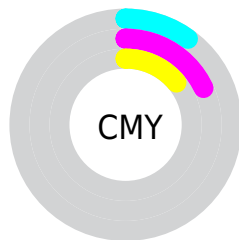


Cyan (0%)

Magenta (9%)

Yellow (5%)

Black (10%)



Cyan (10%)

Magenta (18%)

Yellow (14%)

# Brightness & Saturation Gradients


These gradients show how the CIELCh color 86, 8.679, 347.143 changes by changing the brightness by 10 percent. The first figure shows a shift by +10% for each color and the second figure -10%.

Similar to the brightness gradients but the following saturation gradients show a change of the CIELCh color 86, 8.679, 347.143 by changing the saturation by 10% instead.



 86, 8.679, 347.143

 86, 8.679, 347.143

 100, 8.679,  
347.143

 76, 8.679, 347.143

 66, 8.679, 347.143

 56, 8.679, 347.143

 46, 8.679, 347.143

 36, 8.679, 347.143

 26, 8.679, 347.143

 16, 8.679, 347.143

 6, 8.679, 347.143

 0, 8.679, 347.143

86, 8.679, 347.143

86, 8.679, 347.143

80, 18.892,  
348.148

92, 1.273, 166.706

74, 29.251,  
349.256

98, 10.360,  
166.813

69, 39.542,  
350.529

98, 8.541, 198.943

64, 49.448,  
352.029

59, 58.530,  
353.840

56, 66.266,  
356.084

53, 72.158,  
358.916

51, 75.928, 2.515

■ 49, 77.855, 6.966

# Harmonies

# Complementary

The Complementary color scheme is a pair of colors which are on the opposite of each other on the color wheel.



86, 8.679, 347.143



90, 8.550, 165.742

# Rectangle

The Rectangle color scheme consists of four colors that form a rectangle on the color wheel.



86, 8.679, 347.143



86, 8.679, 37.143



86, 8.679, 167.143



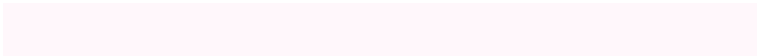
86, 8.679, 217.143

# Sweetspot

The Sweet Spot groups the original color and five complimentary colors.



86, 8.677, 347.149



98, 3.232, 346.542



86, 11.259, 311.157



52, 2.452, 346.645



0, 0.000, 0.000



53, 0.007, 296.813





# Same Dimension

The Same Dimension uses a secret algorithm to generate beautiful new colors.



86, 8.677, 347.149



93, 10.872, 347.282



86, 7.013, 24.100



45, 5.664, 347.223



38, 64.597, 6.687



7, 27.192, 358.736



# Inverse Universe

The Inverse Universe completely reimagines the original color for something new.



86, 8.677, 347.149



93, 10.872, 347.282



90, 6.631, 203.554



45, 5.664, 347.223



38, 64.597, 6.687

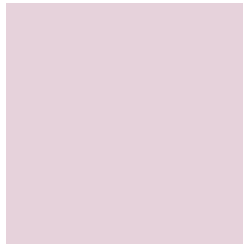


7, 27.192, 358.736



# Previews

## White Background



This preview shows how the CIELCh color 86, 8.679, 347.143 looks on a white background.

## Color Contrast Check

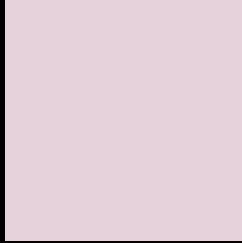
Large Text (above 18pt) WCAG AA × Fail

Any Text WCAG AA × Fail

Large Text (above 18pt) WCAG AAA × Fail

Any Text WCAG AAA × Fail

# Black Background



This preview shows how the CIE LCh color 86, 8.679, 347.143 looks on a black background.

## Color Contrast Check

Large Text (above 18pt) WCAG AA ✓ Pass

Any Text WCAG AA ✓ Pass

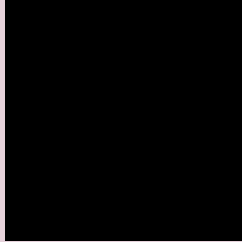
Large Text (above 18pt) WCAG AAA ✓ Pass

Any Text WCAG AAA ✓ Pass

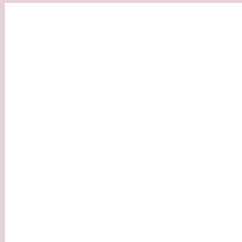
If you want to check with other color combinations, try the [Color Contrast Checker](#).

# CIELCh 86, 8.679, 347.143

## Background



This preview shows how black text looks on a background with the CIELCh color 86, 8.679, 347.143.

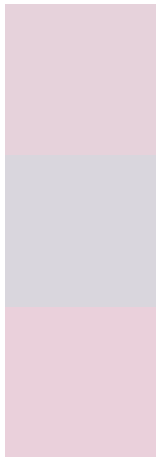


This preview shows how white text looks on a background with the CIELCh color 86, 8.679, 347.143.

# Color Blindness Simulation

Color vision deficiency is a very complex topic, and I could not describe the different causes any better than Wikipedia does, so if you want to learn more, you should check out their [article about color blindness](#).

## Dichromacy



### Original Color

86, 8.679, 347.143

### Protanopia

86, 3.848, 306.658

### Deuteranopia

86, 11.095, 348.980





**Tritanopia**  
86, 11.572, 333.811

# Trichromacy



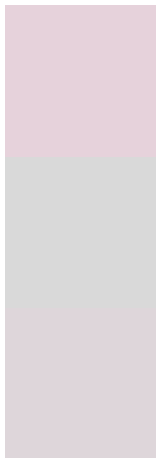
**Original Color**  
86, 8.679, 347.143

**Protanomaly**  
86, 4.926, 331.503

**Deuteranomaly**  
86, 10.198, 349.287

**Tritanomaly**  
86, 10.845, 337.638

# Monochromacy



**Original Color**  
86, 8.679, 347.143

**Achromatopsia**  
87, 0.010, 296.813

**Achromatomaly**  
86, 3.591, 343.823

# CSS Examples

## Text

The CSS property to change the color of the text to CIELCh 86, 8.679, 347.143 is called "color". The color property can be set on classes, ids or directly on the HTML element.

This example shows how text in the color `rgb(230, 210, 219)` looks like.

```
.text, #text, p{  
    color:rgb(230, 210, 219)  
}
```

If you want to add a text shadow in that color use the text-shadow property, you can generate a text shadow directly with our [CSS Text Shadow Generator](#).

Here you see how black text with a 4 pixel rgb(230, 210, 219) colored shadow looks like.

```
.shadow{ text-shadow: 4px 4px 2px rgb(230, 210, 219) }
```

## Border

The CSS property to change the border of an element to CIELCh 86, 8.679, 347.143 is called "border". The border property can be set on classes, ids or directly on the HTML element.

This example shows the color as border, it can be applied via the CSS property "border" or "border-color".

```
.border, #border, table{ border:4px solid rgb(230, 210, 219) }
```

If only the border color should be changed use the property `border-color`.

```
.border{ border-color:rgb(230, 210, 219) }
```

If you want to add a box shadow in that color use:

Here you see how a box with a 4 pixel `rgb(230, 210, 219)` colored shadow looks like.

```
.boxshadow{ -moz-box-shadow:4px 4px 4px  
4px rgb(230, 210, 219); -webkit-box-  
shadow:4px 4px 4px 4px rgb(230, 210, 219);  
box-shadow:4px 4px 4px 4px rgb(230, 210,  
219) }
```

# Background

The CSS property to change the background color of an element to CIELCh 86, 8.679, 347.143 is called "background". The background property can be set on classes, ids or directly on the HTML element.

```
.background, #background, body{  
background: rgb(230, 210, 219) }
```

If only the background color should be changed can be used:

```
.background{ background-color: rgb(230,  
210, 219) }
```

This example shows the color as background, it is applied via the CSS property "background".

To optimize and compress your CSS code, you can use our [online CSS compressor and optimizer](#) based on csstidy. If you want to create a linear or radial gradient as background or border, check our [CSS Gradient Generator](#).

Hey! You found this booklet interesting? Support Converting Colors with the new Membership Option!

The pro membership hides all ads, plus gives you double the colors in the color bucket, and more awesome pro features!

**[Learn more, Memberships starting at \\$2.50/m!](#)**

**Follow me  
on Twitter!**

@ConvertingColor