

Converting Colors

CIELCh(86, 9.806, 36.426)

Have a look what the booklet for
CIELCh(86, 9.806, 36.426) contains.

CIELCh(86, 9.854, 38.485)	3
<i>Conversions</i>	4
<i>Details</i>	6
<i>Harmonies</i>	11
<i>Previews</i>	20
<i>Color Blindness Simulation</i>	23
<i>CSS Examples</i>	26

Color

CIELCh(86, 9.854, 38.485)

Conversions

Conversions Part 1

Format	Color
Hex	EBD2CC
RGB	235, 210, 204
RGB Percent	92%, 82%, 80%
CMY	0.0791, 0.1771, 0.2007
CMYK	0.00, 0.11, 0.13, 0.08
HSL	12°, 43%, 86%
HSV	12°, 13%, 92%
XYZ	68.0808, 67.9871, 66.5495
YIQ	216.7910, 16.8260, 3.4340

Conversions

Conversions Part 2

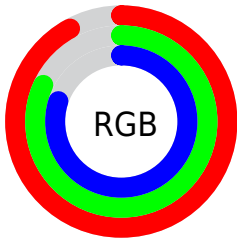
Format	Color
RYB	235, 211, 204
Decimal	15454924
CIELab	86.00, 7.71, 6.13
CIElCh	86, 9.854, 38.485
Yxy	67.9871, 0.3360, 0.3355
Android (android.graphics.Color)	4293645004 (0xFFEBD2CC)
YUV	216.7910, -6.3060, 15.9693
Hunter-Lab	82.4543, 3.0888, 9.8646

Details

The CIELCh color **86, 9.854, 38.485** is a light color, and the websafe version is hex **FFCCCC**. A complement of this color would be **89, 9.051, 219.188**, and the grayscale version is **87, 0.010, 296.813**.

A 20% lighter version of the original color is **100, 0.012, 296.813**, and **66, 9.736, 39.924** is the 20% darker color. If you saturate the color by 10%, you get **81, 18.058, 38.513**, and if you desaturate by 10%, it is **91, 2.291, 38.423**.

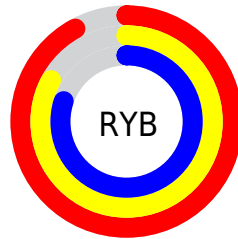
Distribution



Red (92%)

Green (82%)

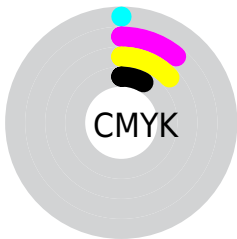
Blue (80%)



Red (92%)

Yellow (83%)

Blue (80%)

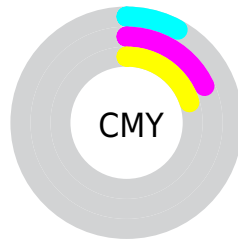


Cyan (0%)

Magenta (11%)

Yellow (13%)

Black (8%)



Cyan (8%)

Magenta (18%)

Yellow (20%)

Brightness & Saturation Gradients

These gradients show how the CIELCh color 86, 9.854, 38.485 changes by changing the brightness by 10 percent. The first figure shows a shift by +10% for each color and the second figure -10%.

Similar to the brightness gradients but the following saturation gradients show a change of the CIELCh color 86, 9.854, 38.485 by changing the saturation by 10% instead.



86, 9.854, 38.485

86, 9.854, 38.485

81, 18.058, 38.513

91, 2.291, 38.423

76, 26.954, 38.656

97, 4.688, 219.035

71, 36.563, 38.982

99, 6.912, 199.064

66, 46.860, 39.531

62, 57.738, 40.327

58, 68.933, 41.338

55, 79.848, 42.383

53, 89.163, 42.956

51, 93.940, 42.956

Harmonies

Complementary

The Complementary color scheme is a pair of colors which are on the opposite of each other on the color wheel.



86, 9.854, 38.485



89, 9.051, 219.188

Rectangle

The Rectangle color scheme consists of four colors that form a rectangle on the color wheel.



86, 9.854, 38.485



86, 9.854, 88.485



86, 9.854, 218.485



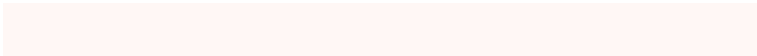
86, 9.854, 268.485

Sweetspot

The Sweet Spot groups the original color and five complimentary colors.



86, 9.853, 38.500



98, 3.073, 38.464



85, 17.358, 330.752



52, 2.191, 38.486



0, 0.000, 0.000



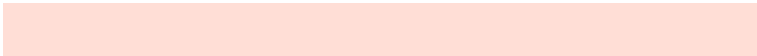
53, 0.007, 296.813

Same Dimension

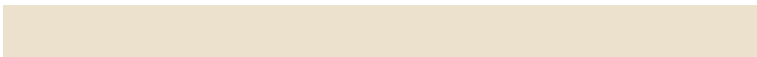
The Same Dimension uses a secret algorithm to generate beautiful new colors.



86, 9.853, 38.500



91, 12.923, 38.494



90, 11.549, 90.769



46, 4.172, 38.511



40, 76.900, 43.346



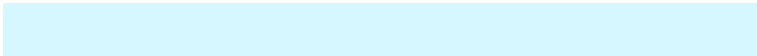
9, 25.021, 33.806

Inverse Universe

The Inverse Universe completely reimagines the original color for something new.



89, 9.051, 219.188



95, 11.635, 219.292



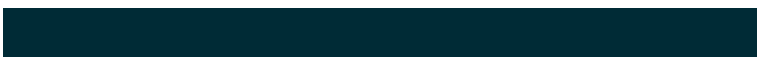
85, 11.555, 274.226



48, 3.931, 219.084



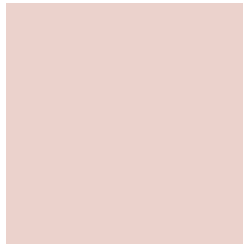
56, 33.874, 234.127



16, 14.417, 227.946

Previews

White Background



This preview shows how the CIELCh color 86, 9.854, 38.485 looks on a white background.

Color Contrast Check

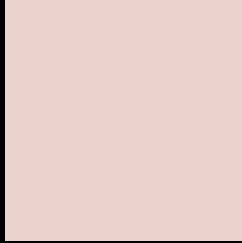
Large Text (above 18pt) WCAG AA × Fail

Any Text WCAG AA × Fail

Large Text (above 18pt) WCAG AAA × Fail

Any Text WCAG AAA × Fail

Black Background



This preview shows how the CIE LCh color 86, 9.854, 38.485 looks on a black background.

Color Contrast Check

Large Text (above 18pt) WCAG AA ✓ Pass

Any Text WCAG AA ✓ Pass

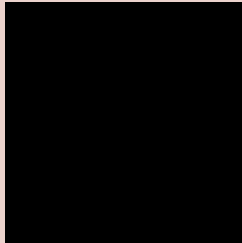
Large Text (above 18pt) WCAG AAA ✓ Pass

Any Text WCAG AAA ✓ Pass

If you want to check with other color combinations, try the [Color Contrast Checker](#).

CIELCh 86, 9.854, 38.485

Background



This preview shows how black text looks on a background with the CIELCh color 86, 9.854, 38.485.

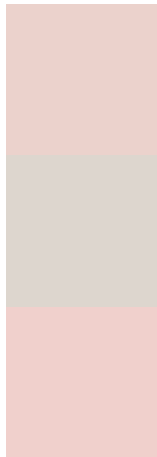


This preview shows how white text looks on a background with the CIELCh color 86, 9.854, 38.485.

Color Blindness Simulation

Color vision deficiency is a very complex topic, and I could not describe the different causes any better than Wikipedia does, so if you want to learn more, you should check out their [article about color blindness](#).

Dichromacy



Original Color

86, 9.854, 38.485

Protanopia

86, 4.894, 78.022

Deuteranopia

86, 12.181, 30.064



Tritanopia
86, 13.743, 342.912

Trichromacy



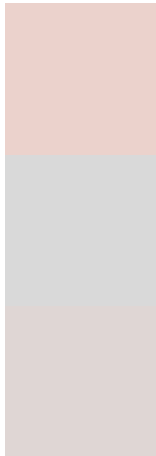
Original Color
86, 9.854, 38.485

Protanomaly
86, 6.334, 54.880

Deuteranomaly
86, 11.171, 33.597

Tritanomaly
86, 11.081, 358.067

Monochromacy



Original Color
86, 9.854, 38.485

Achromatopsia
87, 0.010, 296.813

Achromatomaly
86, 3.436, 37.159

CSS Examples

Text

The CSS property to change the color of the text to CIELCh 86, 9.854, 38.485 is called "color". The color property can be set on classes, ids or directly on the HTML element.

This example shows how text in the color `rgb(235, 210, 204)` looks like.

```
.text, #text, p{  
    color:rgb(235, 210, 204)  
}
```

If you want to add a text shadow in that color use the text-shadow property, you can generate a text shadow directly with our [CSS Text Shadow Generator](#).

Here you see how black text with a 4 pixel rgb(235, 210, 204) colored shadow looks like.

```
.shadow{ text-shadow: 4px 4px 2px rgb(235, 210, 204) }
```

Border

The CSS property to change the border of an element to CIELCh 86, 9.854, 38.485 is called "border". The border property can be set on classes, ids or directly on the HTML element.

This example shows the color as border, it can be applied via the CSS property "border" or "border-color".

```
.border, #border, table{ border:4px solid rgb(235, 210, 204) }
```

If only the border color should be changed use the property `border-color`.

```
.border{ border-color:rgb(235, 210, 204) }
```

If you want to add a box shadow in that color use:

Here you see how a box with a 4 pixel `rgb(235, 210, 204)` colored shadow looks like.

```
.boxshadow{ -moz-box-shadow:4px 4px 4px  
4px rgb(235, 210, 204); -webkit-box-  
shadow:4px 4px 4px 4px rgb(235, 210, 204);  
box-shadow:4px 4px 4px 4px rgb(235, 210,  
204) }
```

Background

The CSS property to change the background color of an element to CIELCh 86, 9.854, 38.485 is called "background". The background property can be set on classes, ids or directly on the HTML element.

```
.background, #background, body{  
background: rgb(235, 210, 204) }
```

If only the background color should be changed can be used:

```
.background{ background-color: rgb(235,  
210, 204) }
```

This example shows the color as background, it is applied via the CSS property "background".

To optimize and compress your CSS code, you can use our [online CSS compressor and optimizer](#) based on csstidy. If you want to create a linear or radial gradient as background or border, check our [CSS Gradient Generator](#).

Hey! You found this booklet interesting? Support Converting Colors with the new Membership Option!

The pro membership hides all ads, plus gives you double the colors in the color bucket, and more awesome pro features!

[Learn more, Memberships starting at \\$2.50/m!](#)

**Follow me
on Twitter!**

@ConvertingColor