

Converting Colors

CIELCh(87, 12.240, 54.355)

Have a look what the booklet for
CIELCh(87, 12.240, 54.355) contains.

CIELCh(87, 12.262, 56.307)	3
<i>Conversions</i>	4
<i>Details</i>	6
<i>Harmonies</i>	11
<i>Previews</i>	20
<i>Color Blindness Simulation</i>	23
<i>CSS Examples</i>	26

Color

CIELCh(87, 12.262, 56.307)

Conversions

Conversions Part 1

Format	Color
Hex	EFD5C7
RGB	239, 213, 199
RGB Percent	94%, 84%, 78%
CMY	0.0631, 0.1650, 0.2199
CMYK	0.00, 0.11, 0.17, 0.06
HSL	21°, 55%, 86%
HSV	21°, 17%, 94%
XYZ	69.6445, 70.0064, 63.8280
YIQ	219.1780, 19.9900, 1.1580

Conversions

Conversions Part 2

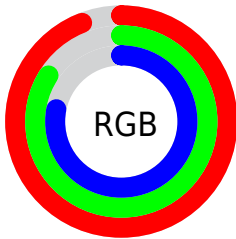
Format	Color
R _Y B	239, 221, 199
Decimal	15717831
CIE Lab	87.00, 6.80, 10.20
CIE LCh	87, 12.262, 56.307
Yxy	70.0064, 0.3423, 0.3440
Android (android.graphics.Color)	4293907911 (0xFFEFD5C7)
YUV	219.1780, -9.9478, 17.3839
Hunter-Lab	83.6698, 2.1564, 13.3391

Details

The CIELCh color **87, 12.262, 56.307** is a light color, and the websafe version is hex **FFCCCC**. A complement of this color would be **88, 11.272, 239.569**, and the grayscale version is **87, 0.010, 296.813**.

A 20% lighter version of the original color is **100, 0.012, 296.813**, and **67, 12.411, 55.104** is the 20% darker color. If you saturate the color by 10%, you get **83, 20.303, 55.546**, and if you desaturate by 10%, it is **91, 4.766, 57.087**.

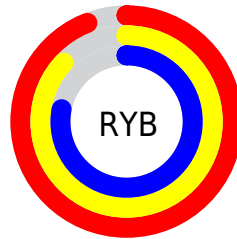
Distribution



Red (94%)

Green (84%)

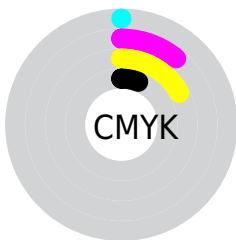
Blue (78%)



Red (94%)

Yellow (87%)

Blue (78%)

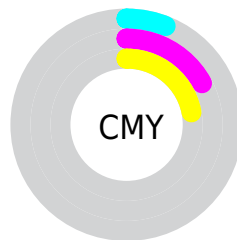


Cyan (0%)

Magenta (11%)

Yellow (17%)

Black (6%)



Cyan (6%)

Magenta (17%)

Yellow (22%)


Brightness & Saturation Gradients

These gradients show how the CIELCh color 87, 12.262, 56.307 changes by changing the brightness by 10 percent. The first figure shows a shift by +10% for each color and the second figure -10%.

Similar to the brightness gradients but the following saturation gradients show a change of the CIELCh color 87, 12.262, 56.307 by changing the saturation by 10% instead.

 87, 12.262, 56.307

 87, 12.262, 56.307

 100, 12.262,
56.307

 77, 12.262, 56.307

 67, 12.262, 56.307

 57, 12.262, 56.307

 47, 12.262, 56.307

 37, 12.262, 56.307

 27, 12.262, 56.307

 17, 12.262, 56.307

 7, 12.262, 56.307

 0, 12.262, 56.307

87, 12.262, 56.307

87, 12.262, 56.307

83, 20.303, 55.546

91, 4.766, 57.087

78, 28.932, 54.825

96, 2.238, 238.309

74, 38.170, 54.177

99, 5.528, 199.175

70, 47.986, 53.606

67, 58.248, 53.087

63, 68.612, 52.524

60, 78.304, 51.666

58, 85.929, 50.034

57, 88.081, 49.468

Harmonies

Complementary

The Complementary color scheme is a pair of colors which are on the opposite of each other on the color wheel.



87, 12.262, 56.307



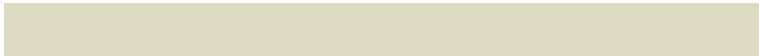
88, 11.272, 239.569

Rectangle

The Rectangle color scheme consists of four colors that form a rectangle on the color wheel.



87, 12.262, 56.307



87, 12.262, 106.307



87, 12.262, 236.307



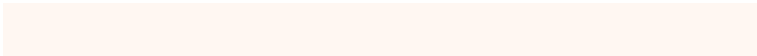
87, 12.262, 286.307

Sweetspot

The Sweet Spot groups the original color and five complimentary colors.



87, 12.262, 56.320



98, 3.704, 57.194



84, 19.890, 337.601



52, 2.533, 57.153



0, 0.000, 0.000



53, 0.007, 296.813

Same Dimension

The Same Dimension uses a secret algorithm to generate beautiful new colors.



87, 12.262, 56.320



91, 15.628, 56.059



92, 17.616, 101.392



48, 4.067, 56.888



44, 71.867, 50.078



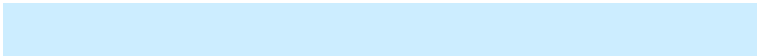
11, 24.248, 46.393

Inverse Universe

The Inverse Universe completely reimagines the original color for something new.



88, 11.272, 239.569



92, 14.101, 239.989



83, 18.057, 285.314



48, 3.889, 238.771



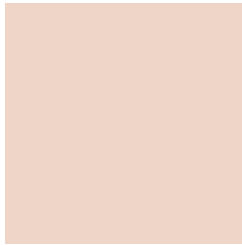
48, 41.740, 264.837



13, 16.738, 256.368

Previews

White Background



This preview shows how the CIELCh color 87, 12.262, 56.307 looks on a white background.

Color Contrast Check

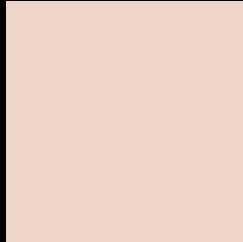
Large Text (above 18pt) WCAG AA × Fail

Any Text WCAG AA × Fail

Large Text (above 18pt) WCAG AAA × Fail

Any Text WCAG AAA × Fail

Black Background



This preview shows how the CIELCh color 87, 12.262, 56.307 looks on a black background.

Color Contrast Check

Large Text (above 18pt) WCAG AA ✓ Pass

Any Text WCAG AA ✓ Pass

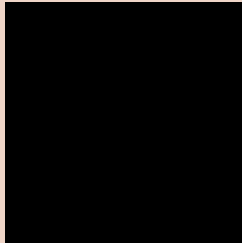
Large Text (above 18pt) WCAG AAA ✓ Pass

Any Text WCAG AAA ✓ Pass

If you want to check with other color combinations, try the [Color Contrast Checker](#).

CIELCh 87, 12.262, 56.307

Background



This preview shows how black text looks on a background with the CIELCh color 87, 12.262, 56.307.

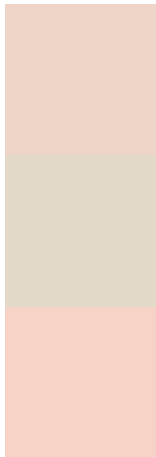


This preview shows how white text looks on a background with the CIELCh color 87, 12.262, 56.307.

Color Blindness Simulation

Color vision deficiency is a very complex topic, and I could not describe the different causes any better than Wikipedia does, so if you want to learn more, you should check out their [article about color blindness](#).

Dichromacy



Original Color

87, 12.262, 56.307

Protanopia

87, 8.977, 87.508

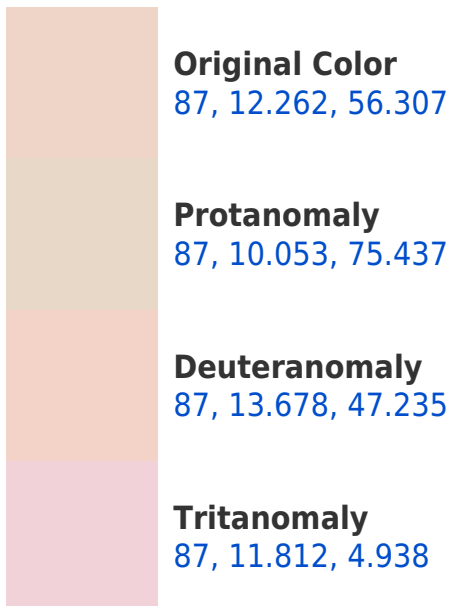
Deuteranopia

87, 14.860, 42.857

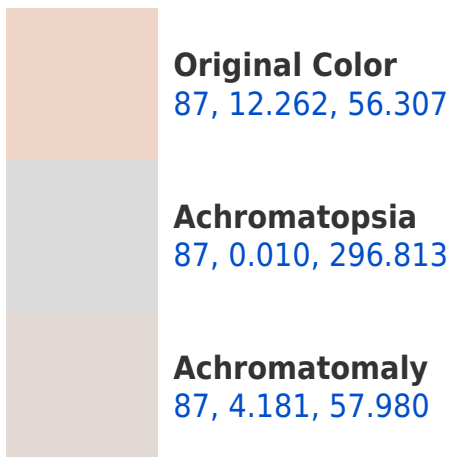


Tritanopia
87, 14.598, 345.633

Trichromacy



Monochromacy



CSS Examples

Text

The CSS property to change the color of the text to CIELCh 87, 12.262, 56.307 is called "color". The color property can be set on classes, ids or directly on the HTML element.

This example shows how text in the color `rgb(239, 213, 199)` looks like.

```
.text, #text, p{  
    color:rgb(239, 213, 199)  
}
```

If you want to add a text shadow in that color use the text-shadow property, you can generate a text shadow directly with our [CSS Text Shadow Generator](#).

Here you see how black text with a 4 pixel rgb(239, 213, 199) colored shadow looks like.

```
.shadow{ text-shadow: 4px 4px 2px rgb(239, 213, 199) }
```

Border

The CSS property to change the border of an element to CIELCh 87, 12.262, 56.307 is called "border". The border property can be set on classes, ids or directly on the HTML element.

This example shows the color as border, it can be applied via the CSS property "border" or "border-color".

```
.border, #border, table{ border:4px solid rgb(239, 213, 199) }
```

If only the border color should be changed use the property `border-color`.

```
.border{ border-color:rgb(239, 213, 199) }
```

If you want to add a box shadow in that color use:

Here you see how a box with a 4 pixel `rgb(239, 213, 199)` colored shadow looks like.

```
.boxshadow{ -moz-box-shadow:4px 4px 4px  
4px rgb(239, 213, 199); -webkit-box-  
shadow:4px 4px 4px 4px rgb(239, 213, 199);  
box-shadow:4px 4px 4px 4px rgb(239, 213,  
199) }
```

Background

The CSS property to change the background color of an element to CIELCh 87, 12.262, 56.307 is called "background". The background property can be set on classes, ids or directly on the HTML element.

```
.background, #background, body{  
background: rgb(239, 213, 199) }
```

If only the background color should be changed can be used:

```
.background{ background-color: rgb(239,  
213, 199) }
```

This example shows the color as background, it is applied via the CSS property "background".

To optimize and compress your CSS code, you can use our [online CSS compressor and optimizer](#) based on csstidy. If you want to create a linear or radial gradient as background or border, check our [CSS Gradient Generator](#).

Hey! You found this booklet interesting? Support Converting Colors with the new Membership Option!

The pro membership hides all ads, plus gives you double the colors in the color bucket, and more awesome pro features!

[Learn more, Memberships starting at \\$2.50/m!](#)

**Follow me
on Twitter!**

@ConvertingColor