

Converting Colors

CIELCh(87, 64.353, 16.816)

Have a look what the booklet for
CIELCh(87, 64.353, 16.816) contains.

CIELCh(77, 35.543, 5.550)	3
<i>Conversions</i>	4
<i>Details</i>	6
<i>Harmonies</i>	11
<i>Previews</i>	20
<i>Color Blindness Simulation</i>	23
<i>CSS Examples</i>	26

Color

CIELCh(77, 35.543, 5.550)

Conversions

Conversions Part 1

Format	Color
Hex	FEA5B9
RGB	254, 165, 185
RGB Percent	100%, 65%, 73%
CMY	0.0038, 0.3525, 0.2741
CMYK	0.00, 0.35, 0.27, 0.00
HSL	347°, 98%, 82%
HSV	347°, 35%, 100%
XYZ	63.1248, 51.5317, 52.5775
YIQ	193.8910, 46.6240, 25.0880

Conversions

Conversions Part 2

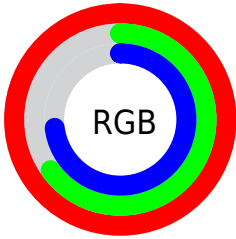
Format	Color
RYB	254, 165, 185
Decimal	16688569
CIELab	77.00, 35.38, 3.44
CIElCh	77, 35.543, 5.550
Yxy	51.5317, 0.3775, 0.3081
Android (android.graphics.Color)	4294878649 (0xFFFEA5B9)
YUV	193.8910, -4.3833, 52.7156
Hunter-Lab	71.7856, 31.3395, 6.8246

Details

The CIELCh color **77, 35.543, 5.550** is a light color, and the websafe version is hex **FF9999**. A complement of this color would be **94, 30.962, 177.943**, and the grayscale version is **78, 0.009, 296.813**.

A 20% lighter version of the original color is **91, 15.959, 340.206**, and **57, 35.685, 5.829** is the 20% darker color. If you saturate the color by 10%, you get **71, 46.284, 7.366**, and if you desaturate by 10%, it is **83, 24.911, 4.073**.

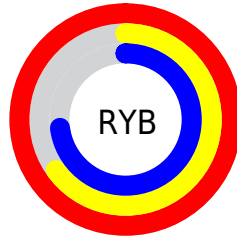
Distribution



Red (100%)

Green (65%)

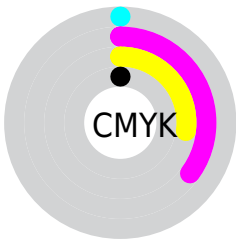
Blue (73%)



Red (100%)

Yellow (65%)

Blue (73%)

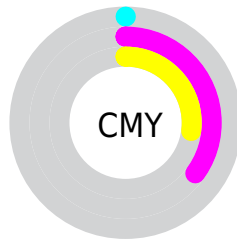


Cyan (0%)

Magenta (35%)

Yellow (27%)

Black (0%)



Cyan (0%)

Magenta (35%)


Yellow (27%)

Brightness & Saturation Gradients

These gradients show how the CIELCh color 77, 35.543, 5.550 changes by changing the brightness by 10 percent. The first figure shows a shift by +10% for each color and the second figure -10%.

Similar to the brightness gradients but the following saturation gradients show a change of the CIELCh color 77, 35.543, 5.550 by changing the saturation by 10% instead.

 77, 35.543, 5.550  77, 35.543, 5.550

 100, 35.543, 5.550  67, 35.543, 5.550

 97, 35.543, 5.550  57, 35.543, 5.550

 47, 35.543, 5.550

 37, 35.543, 5.550

 27, 35.543, 5.550

 17, 35.543, 5.550

 7, 35.543, 5.550

 0, 35.543, 5.550

 77, 35.543, 5.550  77, 35.543, 5.550

71, 46.284, 7.366

83, 24.911, 4.073

66, 56.815, 9.632

90, 14.609, 2.832

61, 66.706, 12.503

96, 4.752, 1.711

58, 75.526, 16.142

100, 0.338,
201.342

55, 83.008, 20.662

54, 89.218, 25.982

53, 92.082, 28.717

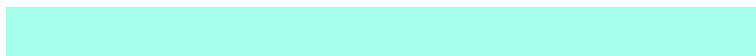
Harmonies

Complementary

The Complementary color scheme is a pair of colors which are on the opposite of each other on the color wheel.



77, 35.543, 5.550



94, 30.962, 177.943

Rectangle

The Rectangle color scheme consists of four colors that form a rectangle on the color wheel.



77, 35.543, 5.550



77, 35.543, 55.550



77, 35.543, 185.550



77, 35.543, 235.550

Sweetspot

The Sweet Spot groups the original color and five complimentary colors.



77, 35.540, 5.553



93, 10.641, 2.383



77, 52.648, 319.336



48, 7.174, 2.533



0, 0.000, 0.000



53, 0.007, 296.813

Same Dimension

The Same Dimension uses a secret algorithm to generate beautiful new colors.



77, 35.540, 5.553



73, 43.199, 6.782



82, 29.420, 46.027



50, 5.479, 2.218



40, 73.752, 27.674



10, 31.839, 17.429

Inverse Universe

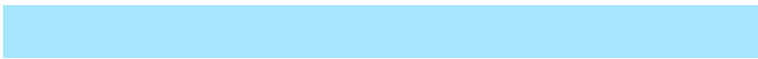
The Inverse Universe completely reimagines the original color for something new.



77, 35.540, 5.553



73, 43.199, 6.782



88, 23.321, 230.598



50, 5.479, 2.218



40, 73.752, 27.674



10, 31.839, 17.429

Previews

White Background



This preview shows how the CIELCh color 77, 35.543, 5.550 looks on a white background.

Color Contrast Check

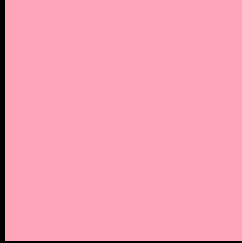
Large Text (above 18pt) WCAG AA × Fail

Any Text WCAG AA × Fail

Large Text (above 18pt) WCAG AAA × Fail

Any Text WCAG AAA × Fail

Black Background



This preview shows how the CIELCh color 77, 35.543, 5.550 looks on a black background.

Color Contrast Check

Large Text (above 18pt) WCAG AA ✓ Pass

Any Text WCAG AA ✓ Pass

Large Text (above 18pt) WCAG AAA ✓ Pass

Any Text WCAG AAA ✓ Pass

If you want to check with other color combinations, try the [Color Contrast Checker](#).

CIELCh 77, 35.543, 5.550

Background



This preview shows how black text looks on a background with the CIELCh color 77, 35.543, 5.550.



This preview shows how white text looks on a background with the CIELCh color 77, 35.543, 5.550.

Color Blindness Simulation

Color vision deficiency is a very complex topic, and I could not describe the different causes any better than Wikipedia does, so if you want to learn more, you should check out their [article about color blindness](#).

Dichromacy



Original Color
77, 35.577, 5.571

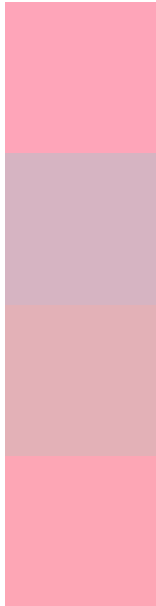
Protanopia
77, 5.436, 298.336

Deuteranopia
77, 10.755, 25.902



Tritanopia
77, 34.390, 11.155

Trichromacy



Original Color
77, 35.577, 5.571

Protanomaly
77, 14.753, 350.152

Deuteranomaly
77, 19.453, 11.660

Tritanomaly
77, 34.465, 9.404

Monochromacy



Original Color
77, 35.577, 5.571

Achromatopsia
78, 0.009, 296.813

Achromatomaly
77, 13.134, 1.554

CSS Examples

Text

The CSS property to change the color of the text to CIELCh 77, 35.543, 5.550 is called "color". The color property can be set on classes, ids or directly on the HTML element.

This example shows how text in the color `rgb(254, 165, 185)` looks like.

```
.text, #text, p{  
    color:rgb(254, 165, 185)  
}
```

If you want to add a text shadow in that color use the text-shadow property, you can generate a text shadow directly with our [CSS Text Shadow Generator](#).

Here you see how black text with a 4 pixel rgb(254, 165, 185) colored shadow looks like.

```
.shadow{ text-shadow: 4px 4px 2px rgb(254, 165, 185) }
```

Border

The CSS property to change the border of an element to CIELCh 77, 35.543, 5.550 is called "border". The border property can be set on classes, ids or directly on the HTML element.

This example shows the color as border, it can be applied via the CSS property "border" or "border-color".

```
.border, #border, table{ border:4px solid rgb(254, 165, 185) }
```

If only the border color should be changed use the property `border-color`.

```
.border{ border-color:rgb(254, 165, 185) }
```

If you want to add a box shadow in that color use:

Here you see how a box with a 4 pixel `rgb(254, 165, 185)` colored shadow looks like.

```
.boxshadow{ -moz-box-shadow:4px 4px 4px  
4px rgb(254, 165, 185); -webkit-box-  
shadow:4px 4px 4px 4px rgb(254, 165, 185);  
box-shadow:4px 4px 4px 4px rgb(254, 165,  
185) }
```

Background

The CSS property to change the background color of an element to CIELCh 77, 35.543, 5.550 is called "background". The background property can be set on classes, ids or directly on the HTML element.

```
.background, #background, body{  
background: rgb(254, 165, 185) }
```

If only the background color should be changed can be used:

```
.background{ background-color: rgb(254,  
165, 185) }
```

This example shows the color as background, it is applied via the CSS property "background".

To optimize and compress your CSS code, you can use our [online CSS compressor and optimizer](#) based on csstidy. If you want to create a linear or radial gradient as background or border, check our [CSS Gradient Generator](#).

Hey! You found this booklet interesting? Support Converting Colors with the new Membership Option!

The pro membership hides all ads, plus gives you double the colors in the color bucket, and more awesome pro features!

[Learn more, Memberships starting at \\$2.50/m!](#)

**Follow me
on Twitter!**

@ConvertingColor