

Converting Colors

CIELCh(87, 65.487, 18.252)

Have a look what the booklet for
CIELCh(87, 65.487, 18.252) contains.

CIELCh(77, 35.275, 8.932)	3
<i>Conversions</i>	4
<i>Details</i>	6
<i>Harmonies</i>	11
<i>Previews</i>	20
<i>Color Blindness Simulation</i>	23
<i>CSS Examples</i>	26

Color

CIELCh(77, 35.275, 8.932)

Conversions

Conversions Part 1

Format	Color
Hex	FEA5B5
RGB	254, 165, 181
RGB Percent	100%, 65%, 71%
CMY	0.0027, 0.3514, 0.2887
CMYK	0.00, 0.35, 0.29, 0.00
HSL	349°, 99%, 82%
HSV	349°, 35%, 100%
XYZ	62.8954, 51.5317, 50.5539
YIQ	193.4350, 47.9080, 23.8440

Conversions

Conversions Part 2

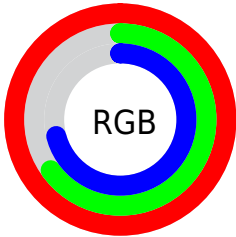
Format	Color
R_{YB}	254, 165, 181
Decimal	16688565
CIE _{Lab}	77.00, 34.85, 5.48
CIE _{LCh}	77, 35.275, 8.932
Yxy	51.5317, 0.3812, 0.3123
Android (android.graphics.Color)	4294878645 (0xFFFEA5B5)
YUV	193.4350, -6.1305, 53.1155
Hunter-Lab	71.7856, 30.7690, 8.4959

Details

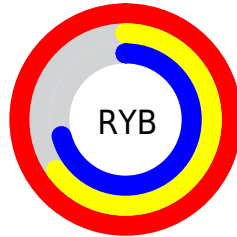
The CIELCh color **77, 35.275, 8.932** is a light color, and the websafe version is hex **FF9999**. A complement of this color would be **94, 30.091, 181.545**, and the grayscale version is **78, 0.009, 296.813**.

A 20% lighter version of the original color is **91, 14.752, 346.414**, and **57, 35.072, 9.183** is the 20% darker color. If you saturate the color by 10%, you get **71, 46.132, 10.770**, and if you desaturate by 10%, it is **83, 24.626, 7.452**.

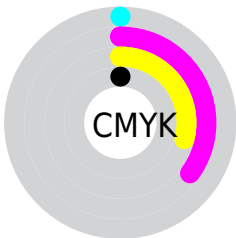
Distribution



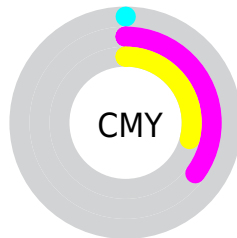
- Red (100%)
- Green (65%)
- Blue (71%)



- Red (100%)
- Yellow (65%)
- Blue (71%)



- Cyan (0%)
- Magenta (35%)
- Yellow (29%)
- Black (0%)



- Cyan (0%)
- Magenta (35%)
- Yellow (29%)

Brightness & Saturation Gradients

These gradients show how the CIELCh color 77, 35.275, 8.932 changes by changing the brightness by 10 percent. The first figure shows a shift by +10% for each color and the second figure -10%.

Similar to the brightness gradients but the following saturation gradients show a change of the CIELCh color 77, 35.275, 8.932 by changing the saturation by 10% instead.

 77, 35.275, 8.932  77, 35.275, 8.932

 100, 35.275, 8.932  67, 35.275, 8.932

 97, 35.275, 8.932  57, 35.275, 8.932

 47, 35.275, 8.932

 37, 35.275, 8.932

 27, 35.275, 8.932

 17, 35.275, 8.932

 7, 35.275, 8.932

 0, 35.275, 8.932

 77, 35.275, 8.932

 77, 35.275, 8.932

71, 46.132, 10.770

83, 24.626, 7.452

66, 56.900, 13.078

90, 14.384, 6.221

61, 67.180, 16.010

96, 4.645, 5.115

58, 76.559, 19.715

100, 0.234,
202.218

55, 84.769, 24.258

54, 91.782, 29.455

53, 95.000, 32.043

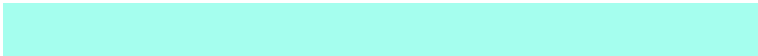
Harmonies

Complementary

The Complementary color scheme is a pair of colors which are on the opposite of each other on the color wheel.



77, 35.275, 8.932



94, 30.091, 181.545

Rectangle

The Rectangle color scheme consists of four colors that form a rectangle on the color wheel.



77, 35.275, 8.932



77, 35.275, 58.932



77, 35.275, 188.932



77, 35.275, 238.932

Sweetspot

The Sweet Spot groups the original color and five complimentary colors.



77, 35.272, 8.935



93, 9.499, 5.673



78, 53.204, 320.879



49, 6.506, 5.825



0, 0.000, 0.000



53, 0.007, 296.813

Same Dimension

The Same Dimension uses a secret algorithm to generate beautiful new colors.



77, 35.272, 8.935



73, 42.993, 10.183



83, 28.957, 51.322



50, 5.393, 5.619



40, 75.952, 31.064



10, 32.103, 19.707

Inverse Universe

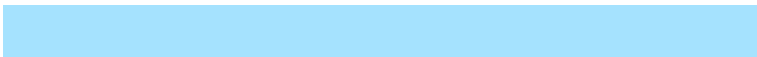
The Inverse Universe completely reimagines the original color for something new.



77, 35.272, 8.935



73, 42.993, 10.183



87, 23.458, 237.670



50, 5.393, 5.619



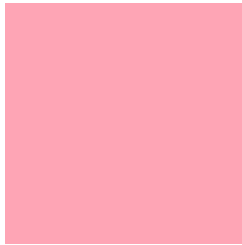
40, 75.952, 31.064



10, 32.103, 19.707

Previews

White Background



This preview shows how the CIELCh color 77, 35.275, 8.932 looks on a white background.

Color Contrast Check

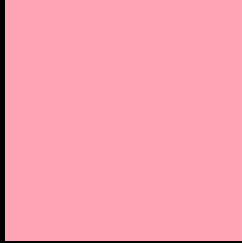
Large Text (above 18pt) WCAG AA × Fail

Any Text WCAG AA × Fail

Large Text (above 18pt) WCAG AAA × Fail

Any Text WCAG AAA × Fail

Black Background



This preview shows how the CIELCh color 77, 35.275, 8.932 looks on a black background.

Color Contrast Check

Large Text (above 18pt) WCAG AA ✓ Pass

Any Text WCAG AA ✓ Pass

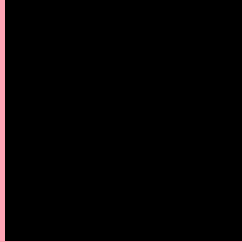
Large Text (above 18pt) WCAG AAA ✓ Pass

Any Text WCAG AAA ✓ Pass

If you want to check with other color combinations, try the [Color Contrast Checker](#).

CIELCh 77, 35.275, 8.932

Background



This preview shows how black text looks on a background with the CIELCh color 77, 35.275, 8.932.



This preview shows how white text looks on a background with the CIELCh color 77, 35.275, 8.932.

Color Blindness Simulation

Color vision deficiency is a very complex topic, and I could not describe the different causes any better than Wikipedia does, so if you want to learn more, you should check out their [article about color blindness](#).

Dichromacy



Original Color

77, 35.310, 8.953

Protanopia

77, 2.919, 312.538

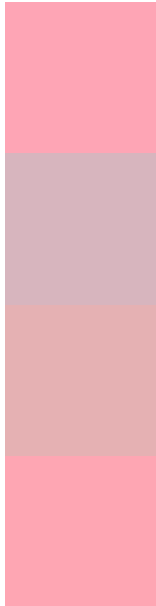
Deuteranopia

77, 12.024, 35.651



Tritanopia
77, 34.754, 12.196

Trichromacy



Original Color
77, 35.310, 8.953

Protanomaly
77, 13.680, 359.997

Deuteranomaly
77, 20.187, 18.112

Tritanomaly
77, 34.776, 11.328

Monochromacy



Original Color
77, 35.310, 8.953

Achromatopsia
78, 0.009, 296.813

Achromatomaly
78, 12.382, 8.004

CSS Examples

Text

The CSS property to change the color of the text to CIELCh 77, 35.275, 8.932 is called "color". The color property can be set on classes, ids or directly on the HTML element.

This example shows how text in the color `rgb(254, 165, 181)` looks like.

```
.text, #text, p{  
    color:rgb(254, 165, 181)  
}
```

If you want to add a text shadow in that color use the text-shadow property, you can generate a text shadow directly with our [CSS Text Shadow Generator](#).

Here you see how black text with a 4 pixel rgb(254, 165, 181) colored shadow looks like.

```
.shadow{ text-shadow: 4px 4px 2px rgb(254, 165, 181) }
```

Border

The CSS property to change the border of an element to CIELCh 77, 35.275, 8.932 is called "border". The border property can be set on classes, ids or directly on the HTML element.

This example shows the color as border, it can be applied via the CSS property "border" or "border-color".

```
.border, #border, table{ border:4px solid rgb(254, 165, 181) }
```

If only the border color should be changed use the property `border-color`.

```
.border{ border-color:rgb(254, 165, 181) }
```

If you want to add a box shadow in that color use:

Here you see how a box with a 4 pixel `rgb(254, 165, 181)` colored shadow looks like.

```
.boxshadow{ -moz-box-shadow:4px 4px 4px  
4px rgb(254, 165, 181); -webkit-box-  
shadow:4px 4px 4px 4px rgb(254, 165, 181);  
box-shadow:4px 4px 4px 4px rgb(254, 165,  
181) }
```

Background

The CSS property to change the background color of an element to CIELCh 77, 35.275, 8.932 is called "background". The background property can be set on classes, ids or directly on the HTML element.

```
.background, #background, body{  
background: rgb(254, 165, 181) }
```

If only the background color should be changed can be used:

```
.background{ background-color: rgb(254,  
165, 181) }
```

This example shows the color as background, it is applied via the CSS property "background".

To optimize and compress your CSS code, you can use our [online CSS compressor and optimizer](#) based on csstidy. If you want to create a linear or radial gradient as background or border, check our [CSS Gradient Generator](#).

Hey! You found this booklet interesting? Support Converting Colors with the new Membership Option!

The pro membership hides all ads, plus gives you double the colors in the color bucket, and more awesome pro features!

[Learn more, Memberships starting at \\$2.50/m!](#)

**Follow me
on Twitter!**

@ConvertingColor