

Converting Colors

CIELCh(87, 8.162, 37.803)

Have a look what the booklet for
CIELCh(87, 8.162, 37.803) contains.

CIELCh(87, 7.841, 39.205)	3
<i>Conversions</i>	4
<i>Details</i>	6
<i>Harmonies</i>	11
<i>Previews</i>	20
<i>Color Blindness Simulation</i>	23
<i>CSS Examples</i>	26

Color

CIELCh(87, 7.841, 39.205)

Conversions

Conversions Part 1

Format	Color
Hex	EAD6D1
RGB	234, 214, 209
RGB Percent	92%, 84%, 82%
CMY	0.0834, 0.1617, 0.1814
CMYK	0.00, 0.09, 0.11, 0.08
HSL	12°, 37%, 87%
HSV	12°, 11%, 92%
XYZ	69.3084, 70.0064, 70.0194
YIQ	219.4100, 13.5250, 2.6850

Conversions

Conversions Part 2

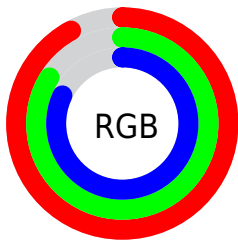
Format	Color
RYB	234, 215, 209
Decimal	15390417
CIELab	87.00, 6.08, 4.96
CIElCh	87, 7.841, 39.205
Yxy	70.0064, 0.3311, 0.3344
Android (android.graphics.Color)	4293580497 (0xFFEAD6D1)
YUV	219.4100, -5.1321, 12.7954
Hunter-Lab	83.6698, 1.4394, 8.9518

Details

The CIELCh color **87, 7.841, 39.205** is a light color, and the websafe version is hex **CCCCCC**. A complement of this color would be **90, 7.329, 219.897**, and the grayscale version is **87, 0.010, 296.813**.

A 20% lighter version of the original color is **100, 0.012, 296.813**, and **67, 7.780, 36.370** is the 20% darker color. If you saturate the color by 10%, you get **82, 15.817, 39.182**, and if you desaturate by 10%, it is **92, 0.485, 38.227**.

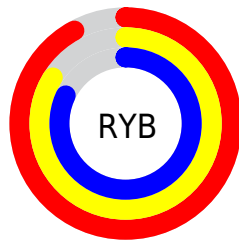
Distribution



Red (92%)

Green (84%)

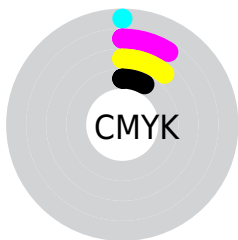
Blue (82%)



Red (92%)

Yellow (84%)

Blue (82%)

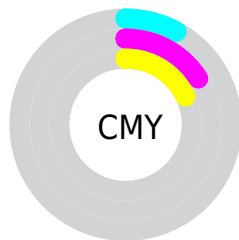


Cyan (0%)

Magenta (9%)

Yellow (11%)

Black (8%)



Cyan (8%)

Magenta (16%)

Yellow (18%)

Brightness & Saturation Gradients

These gradients show how the CIELCh color 87, 7.841, 39.205 changes by changing the brightness by 10 percent. The first figure shows a shift by +10% for each color and the second figure -10%.

Similar to the brightness gradients but the following saturation gradients show a change of the CIELCh color 87, 7.841, 39.205 by changing the saturation by 10% instead.

 87, 7.841, 39.205	 87, 7.841, 39.205
 100, 7.841, 39.205	 77, 7.841, 39.205
	 67, 7.841, 39.205
	 57, 7.841, 39.205
	 47, 7.841, 39.205
	 37, 7.841, 39.205
	 27, 7.841, 39.205
	 17, 7.841, 39.205
	 7, 7.841, 39.205
	 0, 7.841, 39.205

87, 7.841, 39.205

87, 7.841, 39.205

82, 15.817, 39.182

92, 0.485, 38.227

77, 24.469, 39.249

98, 6.232, 217.597

72, 33.827, 39.482

99, 7.272, 199.036

67, 43.882, 39.923

63, 54.556, 40.599

59, 65.639, 41.497

56, 76.651, 42.486

53, 86.509, 43.166

51, 93.365, 43.149

Harmonies

Complementary

The Complementary color scheme is a pair of colors which are on the opposite of each other on the color wheel.



87, 7.841, 39.205



90, 7.329, 219.897

Rectangle

The Rectangle color scheme consists of four colors that form a rectangle on the color wheel.



87, 7.841, 39.205



87, 7.841, 89.205



87, 7.841, 219.205



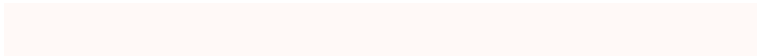
87, 7.841, 269.205

Sweetspot

The Sweet Spot groups the original color and five complimentary colors.



87, 7.840, 39.224



98, 2.286, 39.150



86, 13.825, 331.173



52, 1.739, 39.194



0, 0.000, 0.000



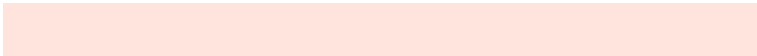
53, 0.007, 296.813

Same Dimension

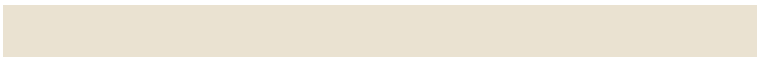
The Same Dimension uses a secret algorithm to generate beautiful new colors.



87, 7.840, 39.224



93, 10.330, 39.209



90, 9.452, 92.361



46, 4.157, 39.231



40, 76.693, 43.543



9, 24.927, 34.208

Inverse Universe

The Inverse Universe completely reimagines the original color for something new.



90, 7.329, 219.897



96, 9.502, 219.975



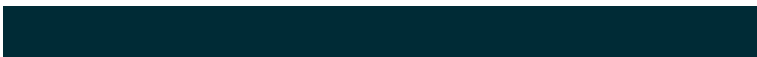
86, 9.481, 275.116



48, 3.918, 219.862



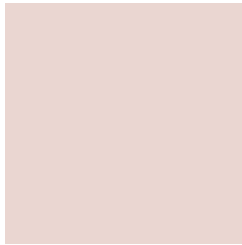
56, 33.972, 235.540



15, 14.422, 229.152

Previews

White Background



This preview shows how the CIELCh color 87, 7.841, 39.205 looks on a white background.

Color Contrast Check

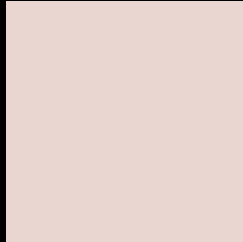
Large Text (above 18pt) WCAG AA × Fail

Any Text WCAG AA × Fail

Large Text (above 18pt) WCAG AAA × Fail

Any Text WCAG AAA × Fail

Black Background



This preview shows how the CIELCh color 87, 7.841, 39.205 looks on a black background.

Color Contrast Check

Large Text (above 18pt) WCAG AA ✓ Pass

Any Text WCAG AA ✓ Pass

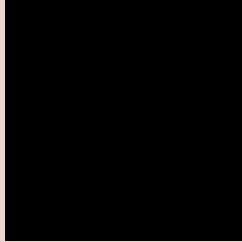
Large Text (above 18pt) WCAG AAA ✓ Pass

Any Text WCAG AAA ✓ Pass

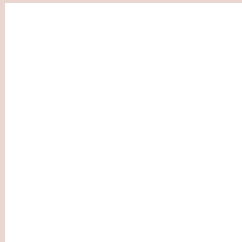
If you want to check with other color combinations, try the [Color Contrast Checker](#).

CIELCh 87, 7.841, 39.205

Background



This preview shows how black text looks on a background with the CIELCh color 87, 7.841, 39.205.

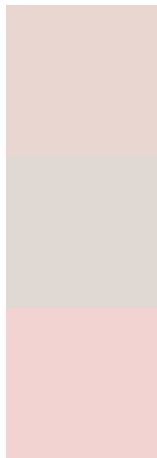


This preview shows how white text looks on a background with the CIELCh color 87, 7.841, 39.205.

Color Blindness Simulation

Color vision deficiency is a very complex topic, and I could not describe the different causes any better than Wikipedia does, so if you want to learn more, you should check out their [article about color blindness](#).

Dichromacy



Original Color

87, 7.841, 39.205

Protanopia

87, 4.024, 70.361

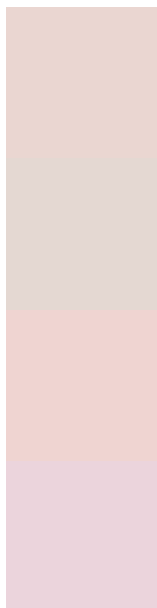
Deuteranopia

87, 11.584, 25.340



Tritanopia
87, 12.318, 337.561

Trichromacy



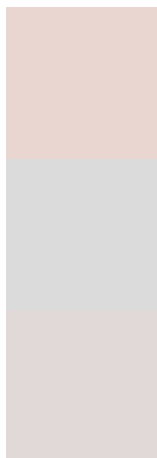
Original Color
87, 7.841, 39.205

Protanomaly
87, 5.393, 54.973

Deuteranomaly
87, 10.149, 28.902

Tritanomaly
87, 9.365, 353.601

Monochromacy



Original Color
87, 7.841, 39.205

Achromatopsia
87, 0.010, 296.813

Achromatomaly
87, 2.737, 41.747

CSS Examples

Text

The CSS property to change the color of the text to CIELCh 87, 7.841, 39.205 is called "color". The color property can be set on classes, ids or directly on the HTML element.

This example shows how text in the color `rgb(234, 214, 209)` looks like.

```
.text, #text, p{  
    color:rgb(234, 214, 209)  
}
```

If you want to add a text shadow in that color use the text-shadow property, you can generate a text shadow directly with our [CSS Text Shadow Generator](#).

Here you see how black text with a 4 pixel rgb(234, 214, 209) colored shadow looks like.

```
.shadow{ text-shadow: 4px 4px 2px rgb(234, 214, 209) }
```

Border

The CSS property to change the border of an element to CIELCh 87, 7.841, 39.205 is called "border". The border property can be set on classes, ids or directly on the HTML element.

This example shows the color as border, it can be applied via the CSS property "border" or "border-color".

```
.border, #border, table{ border:4px solid rgb(234, 214, 209) }
```

If only the border color should be changed use the property `border-color`.

```
.border{ border-color:rgb(234, 214, 209) }
```

If you want to add a box shadow in that color use:

Here you see how a box with a 4 pixel `rgb(234, 214, 209)` colored shadow looks like.

```
.boxshadow{ -moz-box-shadow:4px 4px 4px  
4px rgb(234, 214, 209); -webkit-box-  
shadow:4px 4px 4px 4px rgb(234, 214, 209);  
box-shadow:4px 4px 4px 4px rgb(234, 214,  
209) }
```

Background

The CSS property to change the background color of an element to CIELCh 87, 7.841, 39.205 is called "background". The background property can be set on classes, ids or directly on the HTML element.

```
.background, #background, body{  
background: rgb(234, 214, 209) }
```

If only the background color should be changed can be used:

```
.background{ background-color: rgb(234,  
214, 209) }
```

This example shows the color as background, it is applied via the CSS property "background".

To optimize and compress your CSS code, you can use our [online CSS compressor and optimizer](#) based on csstidy. If you want to create a linear or radial gradient as background or border, check our [CSS Gradient Generator](#).

Hey! You found this booklet interesting? Support Converting Colors with the new Membership Option!

The pro membership hides all ads, plus gives you double the colors in the color bucket, and more awesome pro features!

[Learn more, Memberships starting at \\$2.50/m!](#)

**Follow me
on Twitter!**

@ConvertingColor