

Converting Colors

CIELCh(87, 8.432, 22.124)

Have a look what the booklet for
CIELCh(87, 8.432, 22.124) contains.

CIELCh(87, 8.494, 23.464)	3
<i>Conversions</i>	4
<i>Details</i>	6
<i>Harmonies</i>	11
<i>Previews</i>	20
<i>Color Blindness Simulation</i>	23
<i>CSS Examples</i>	26

Color

CIELCh(87, 8.494, 23.464)

Conversions

Conversions Part 1

Format	Color
Hex	ECD5D4
RGB	236, 213, 212
RGB Percent	93%, 84%, 83%
CMY	0.0754, 0.1656, 0.1695
CMYK	0.00, 0.10, 0.10, 0.08
HSL	3°, 38%, 88%
HSV	3°, 10%, 92%
XYZ	70.1041, 70.0064, 71.9524
YIQ	219.7630, 14.0290, 4.5650

Conversions

Conversions Part 2

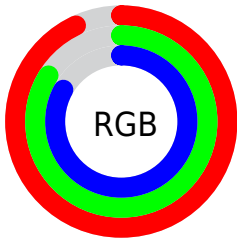
Format	Color
R _Y B	236, 213, 212
Decimal	15521236
CIE Lab	87.00, 7.79, 3.38
CIE LCh	87, 8.494, 23.464
Yxy	70.0064, 0.3306, 0.3301
Android (android.graphics.Color)	4293711316 (0xFFECD5D4)
YUV	219.7630, -3.8272, 14.2398
Hunter-Lab	83.6698, 3.1369, 7.5820

Details

The CIELCh color **87, 8.494, 23.464** is a light color, and the websafe version is hex **CCCCCC**. A complement of this color would be **91, 7.952, 202.713**, and the grayscale version is **88, 0.010, 296.813**.

A 20% lighter version of the original color is **100, 0.012, 296.813**, and **67, 8.633, 23.776** is the 20% darker color. If you saturate the color by 10%, you get **81, 17.536, 24.184**, and if you desaturate by 10%, it is **93, 0.143, 18.654**.

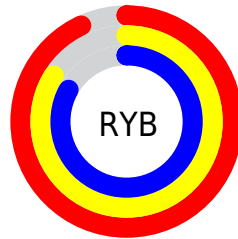
Distribution



Red (93%)

Green (84%)

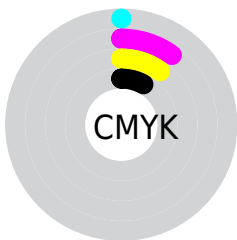
Blue (83%)



Red (93%)

Yellow (84%)

Blue (83%)

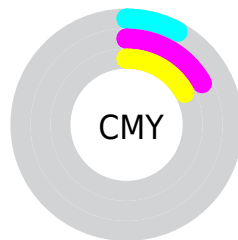


Cyan (0%)

Magenta (10%)

Yellow (10%)

Black (8%)



Cyan (8%)

Magenta (17%)

Yellow (17%)

Brightness & Saturation Gradients

These gradients show how the CIELCh color 87, 8.494, 23.464 changes by changing the brightness by 10 percent. The first figure shows a shift by +10% for each color and the second figure -10%.

Similar to the brightness gradients but the following saturation gradients show a change of the CIELCh color 87, 8.494, 23.464 by changing the saturation by 10% instead.

 87, 8.494, 23.464

 87, 8.494, 23.464

 100, 8.494, 23.464

 77, 8.494, 23.464

 67, 8.494, 23.464

 57, 8.494, 23.464

 47, 8.494, 23.464

 37, 8.494, 23.464

 27, 8.494, 23.464

 17, 8.494, 23.464

 7, 8.494, 23.464

 0, 8.494, 23.464

87, 8.494, 23.464

87, 8.494, 23.464

81, 17.536, 24.184

93, 0.143, 18.654

75, 27.294, 25.090

99, 6.594, 199.088

69, 37.739, 26.289

64, 48.768, 27.871

60, 60.175, 29.927

56, 71.630, 32.503

53, 82.597, 35.486

51, 91.986, 38.360

50, 98.031, 40.324

Harmonies

Complementary

The Complementary color scheme is a pair of colors which are on the opposite of each other on the color wheel.



87, 8.494, 23.464



91, 7.952, 202.713

Rectangle

The Rectangle color scheme consists of four colors that form a rectangle on the color wheel.



87, 8.494, 23.464



87, 8.494, 73.464



87, 8.494, 203.464



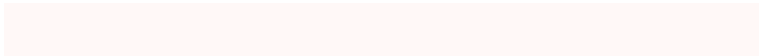
87, 8.494, 253.464

Sweetspot

The Sweet Spot groups the original color and five complimentary colors.



87, 8.492, 23.479



98, 2.592, 22.925



87, 14.878, 325.891



52, 1.971, 23.018



0, 0.000, 0.000



53, 0.007, 296.813

Same Dimension

The Same Dimension uses a secret algorithm to generate beautiful new colors.



87, 8.492, 23.479



92, 10.753, 23.602



90, 7.791, 77.615



46, 4.708, 23.433



38, 80.268, 40.445



7, 27.679, 24.915

Inverse Universe

The Inverse Universe completely reimagines the original color for something new.



91, 7.952, 202.713



98, 9.941, 202.632



88, 7.645, 260.357



48, 4.429, 202.745



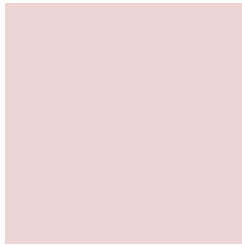
64, 36.622, 203.233



19, 15.804, 202.177

Previews

White Background



This preview shows how the CIELCh color 87, 8.494, 23.464 looks on a white background.

Color Contrast Check

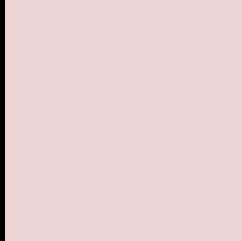
Large Text (above 18pt) WCAG AA × Fail

Any Text WCAG AA × Fail

Large Text (above 18pt) WCAG AAA × Fail

Any Text WCAG AAA × Fail

Black Background



This preview shows how the CIE LCh color 87, 8.494, 23.464 looks on a black background.

Color Contrast Check

Large Text (above 18pt) WCAG AA ✓ Pass

Any Text WCAG AA ✓ Pass

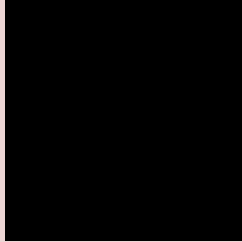
Large Text (above 18pt) WCAG AAA ✓ Pass

Any Text WCAG AAA ✓ Pass

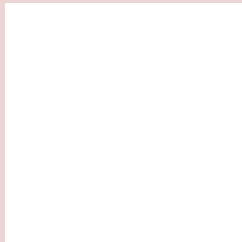
If you want to check with other color combinations, try the [Color Contrast Checker](#).

CIELCh 87, 8.494, 23.464

Background



This preview shows how black text looks on a background with the CIELCh color 87, 8.494, 23.464.



This preview shows how white text looks on a background with the CIELCh color 87, 8.494, 23.464.

Color Blindness Simulation

Color vision deficiency is a very complex topic, and I could not describe the different causes any better than Wikipedia does, so if you want to learn more, you should check out their [article about color blindness](#).

Dichromacy



Original Color

87, 8.494, 23.464

Protanopia

87, 2.669, 55.180

Deuteranopia

87, 11.109, 17.504



Tritanopia
87, 13.473, 339.166

Trichromacy



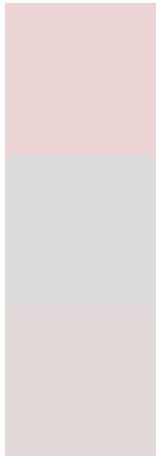
Original Color
87, 8.494, 23.464

Protanomaly
87, 4.861, 32.000

Deuteranomaly
87, 9.975, 20.084

Tritanomaly
87, 10.814, 351.347

Monochromacy



Original Color
87, 8.494, 23.464

Achromatopsia
88, 0.010, 296.813

Achromatomaly
87, 3.264, 19.461

CSS Examples

Text

The CSS property to change the color of the text to CIELCh 87, 8.494, 23.464 is called "color". The color property can be set on classes, ids or directly on the HTML element.

This example shows how text in the color `rgb(236, 213, 212)` looks like.

```
.text, #text, p{  
    color:rgb(236, 213, 212)  
}
```

If you want to add a text shadow in that color use the text-shadow property, you can generate a text shadow directly with our [CSS Text Shadow Generator](#).

Here you see how black text with a 4 pixel rgb(236, 213, 212) colored shadow looks like.

```
.shadow{ text-shadow: 4px 4px 2px rgb(236, 213, 212) }
```

Border

The CSS property to change the border of an element to CIELCh 87, 8.494, 23.464 is called "border". The border property can be set on classes, ids or directly on the HTML element.

This example shows the color as border, it can be applied via the CSS property "border" or "border-color".

```
.border, #border, table{ border:4px solid rgb(236, 213, 212) }
```

If only the border color should be changed use the property `border-color`.

```
.border{ border-color:rgb(236, 213, 212) }
```

If you want to add a box shadow in that color use:

Here you see how a box with a 4 pixel `rgb(236, 213, 212)` colored shadow looks like.

```
.boxshadow{ -moz-box-shadow:4px 4px 4px  
4px rgb(236, 213, 212); -webkit-box-  
shadow:4px 4px 4px 4px rgb(236, 213, 212);  
box-shadow:4px 4px 4px 4px rgb(236, 213,  
212) }
```

Background

The CSS property to change the background color of an element to CIELCh 87, 8.494, 23.464 is called "background". The background property can be set on classes, ids or directly on the HTML element.

```
.background, #background, body{  
background: rgb(236, 213, 212) }
```

If only the background color should be changed can be used:

```
.background{ background-color: rgb(236,  
213, 212) }
```

This example shows the color as background, it is applied via the CSS property "background".

To optimize and compress your CSS code, you can use our [online CSS compressor and optimizer](#) based on csstidy. If you want to create a linear or radial gradient as background or border, check our [CSS Gradient Generator](#).

Hey! You found this booklet interesting? Support Converting Colors with the new Membership Option!

The pro membership hides all ads, plus gives you double the colors in the color bucket, and more awesome pro features!

[Learn more, Memberships starting at \\$2.50/m!](#)

**Follow me
on Twitter!**

@ConvertingColor