

Converting Colors

CIELCh(87, 9.255, 18.683)

Have a look what the booklet for
CIELCh(87, 9.255, 18.683) contains.

CIELCh(87, 9.223, 16.797)	3
<i>Conversions</i>	4
<i>Details</i>	6
<i>Harmonies</i>	11
<i>Previews</i>	20
<i>Color Blindness Simulation</i>	23
<i>CSS Examples</i>	26

Color

CIELCh(87, 9.223, 16.797)

Conversions

Conversions Part 1

Format	Color
Hex	EDD4D5
RGB	237, 212, 213
RGB Percent	93%, 83%, 84%
CMY	0.0700, 0.1680, 0.1641
CMYK	0.00, 0.11, 0.10, 0.07
HSL	358°, 41%, 88%
HSV	358°, 11%, 93%
XYZ	70.5884, 70.0064, 72.8443
YIQ	219.5890, 14.5790, 5.6110

Conversions

Conversions Part 2

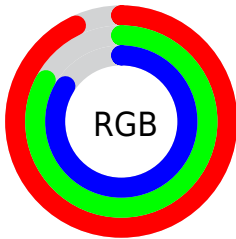
Format	Color
R _Y B	237, 212, 213
Decimal	15586517
CIE Lab	87.00, 8.83, 2.67
CIE LCh	87, 9.223, 16.797
Yxy	70.0064, 0.3307, 0.3280
Android (android.graphics.Color)	4293776597 (0xFFEDD4D5)
YUV	219.5890, -3.2484, 15.2694
Hunter-Lab	83.6698, 4.1701, 6.9501

Details

The CIELCh color **87, 9.223, 16.797** is a light color, and the websafe version is hex **FFCCCC**. A complement of this color would be **92, 8.665, 195.480**, and the grayscale version is **88, 0.010, 296.813**.

A 20% lighter version of the original color is **100, 0.012, 296.813**, and **67, 9.399, 16.888** is the 20% darker color. If you saturate the color by 10%, you get **81, 18.643, 17.774**, and if you desaturate by 10%, it is **93, 0.458, 14.778**.

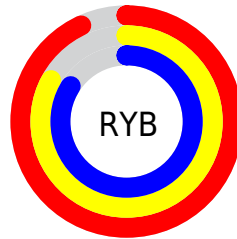
Distribution



Red (93%)

Green (83%)

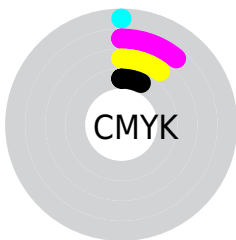
Blue (84%)



Red (93%)

Yellow (83%)

Blue (84%)

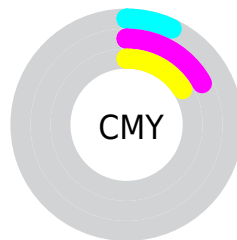


Cyan (0%)

Magenta (11%)

Yellow (10%)

Black (7%)



Cyan (7%)

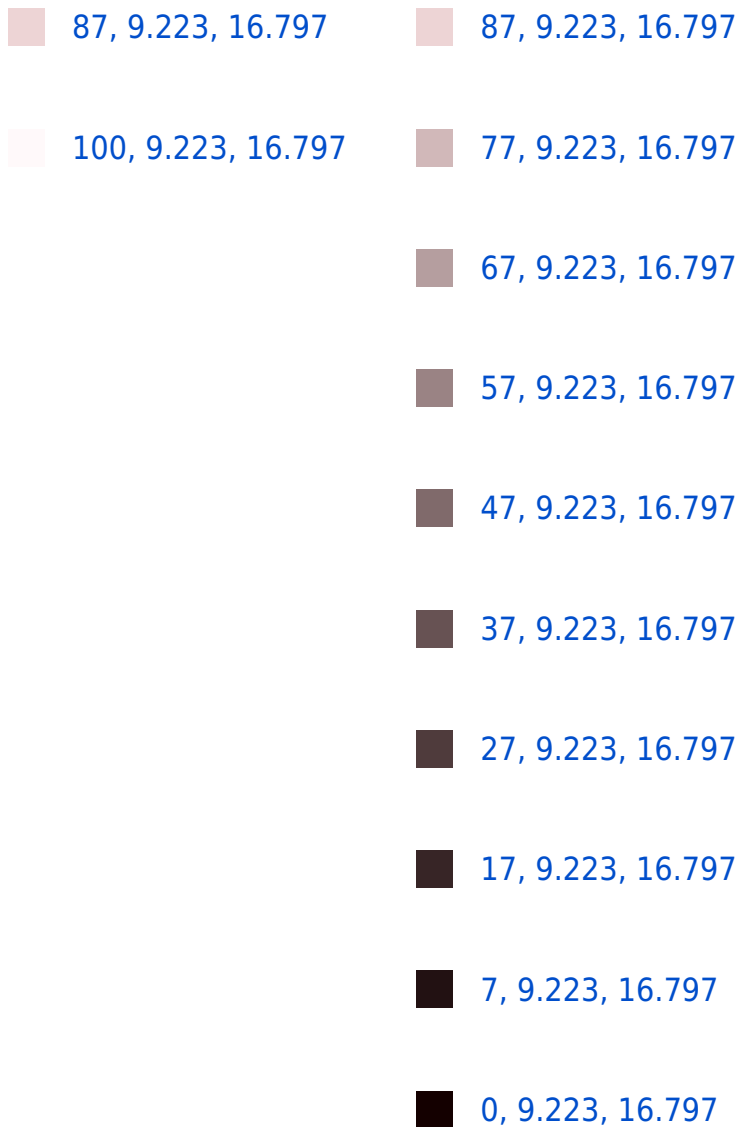
Magenta (17%)

Yellow (16%)

Brightness & Saturation Gradients

These gradients show how the CIELCh color 87, 9.223, 16.797 changes by changing the brightness by 10 percent. The first figure shows a shift by +10% for each color and the second figure -10%.

Similar to the brightness gradients but the following saturation gradients show a change of the CIELCh color 87, 9.223, 16.797 by changing the saturation by 10% instead.



87, 9.223, 16.797

87, 9.223, 16.797

81, 18.643, 17.774

93, 0.458, 14.778

75, 28.712, 18.968

99, 6.125, 199.126

69, 39.352, 20.493

64, 50.392, 22.461

59, 61.556, 24.993

55, 72.477, 28.182

52, 82.712, 31.977

50, 91.562, 35.955

50, 97.419, 38.822

Harmonies

Complementary

The Complementary color scheme is a pair of colors which are on the opposite of each other on the color wheel.



87, 9.223, 16.797



92, 8.665, 195.480

Rectangle

The Rectangle color scheme consists of four colors that form a rectangle on the color wheel.



87, 9.223, 16.797



87, 9.223, 66.797



87, 9.223, 196.797



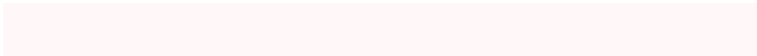
87, 9.223, 246.797

Sweetspot

The Sweet Spot groups the original color and five complimentary colors.



87, 9.221, 16.810



98, 2.708, 16.061



88, 15.600, 323.627



52, 2.058, 16.169



0, 0.000, 0.000



53, 0.007, 296.813

Same Dimension

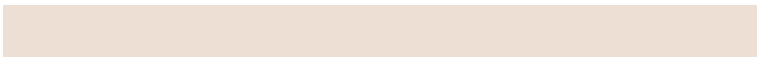
The Same Dimension uses a secret algorithm to generate beautiful new colors.



87, 9.221, 16.810



91, 12.174, 17.037



90, 7.712, 68.550



47, 4.994, 16.715



38, 79.967, 38.399



8, 29.626, 22.208

Inverse Universe

The Inverse Universe completely reimagines the original color for something new.



87, 9.221, 16.810



91, 12.174, 17.037



89, 7.454, 251.194



47, 4.994, 16.715



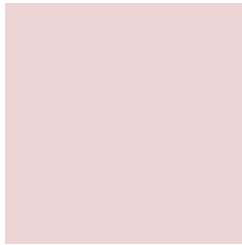
38, 79.967, 38.399



8, 29.626, 22.208

Previews

White Background



This preview shows how the CIELCh color 87, 9.223, 16.797 looks on a white background.

Color Contrast Check

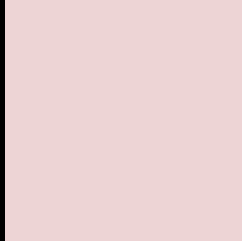
Large Text (above 18pt) WCAG AA × Fail

Any Text WCAG AA × Fail

Large Text (above 18pt) WCAG AAA × Fail

Any Text WCAG AAA × Fail

Black Background



This preview shows how the CIE LCh color 87, 9.223, 16.797 looks on a black background.

Color Contrast Check

Large Text (above 18pt) WCAG AA ✓ Pass

Any Text WCAG AA ✓ Pass

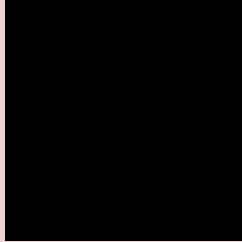
Large Text (above 18pt) WCAG AAA ✓ Pass

Any Text WCAG AAA ✓ Pass

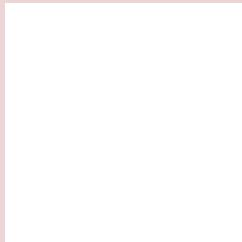
If you want to check with other color combinations, try the [Color Contrast Checker](#).

CIELCh 87, 9.223, 16.797

Background



This preview shows how black text looks on a background with the CIELCh color 87, 9.223, 16.797.

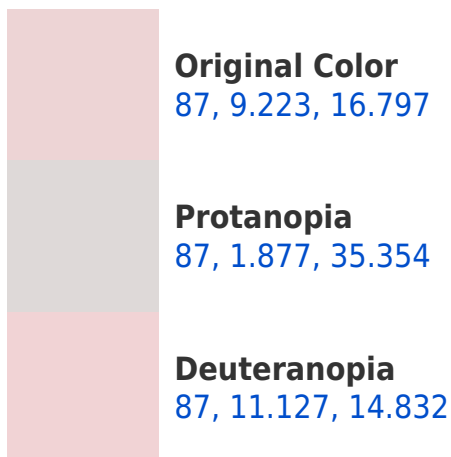


This preview shows how white text looks on a background with the CIELCh color 87, 9.223, 16.797.

Color Blindness Simulation

Color vision deficiency is a very complex topic, and I could not describe the different causes any better than Wikipedia does, so if you want to learn more, you should check out their [article about color blindness](#).

Dichromacy





Tritanopia
87, 13.745, 340.199

Trichromacy



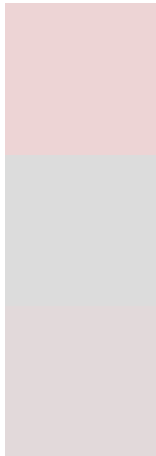
Original Color
87, 9.223, 16.797

Protanomaly
87, 4.739, 19.627

Deuteranomaly
87, 10.753, 14.613

Tritanomaly
87, 11.380, 349.961

Monochromacy



Original Color
87, 9.223, 16.797

Achromatopsia
88, 0.010, 296.813

Achromatomaly
87, 3.307, 10.398

CSS Examples

Text

The CSS property to change the color of the text to CIELCh 87, 9.223, 16.797 is called "color". The color property can be set on classes, ids or directly on the HTML element.

This example shows how text in the color `rgb(237, 212, 213)` looks like.

```
.text, #text, p{  
    color:rgb(237, 212, 213)  
}
```

If you want to add a text shadow in that color use the text-shadow property, you can generate a text shadow directly with our [CSS Text Shadow Generator](#).

Here you see how black text with a 4 pixel rgb(237, 212, 213) colored shadow looks like.

```
.shadow{ text-shadow: 4px 4px 2px rgb(237, 212, 213) }
```

Border

The CSS property to change the border of an element to CIELCh 87, 9.223, 16.797 is called "border". The border property can be set on classes, ids or directly on the HTML element.

This example shows the color as border, it can be applied via the CSS property "border" or "border-color".

```
.border, #border, table{ border:4px solid rgb(237, 212, 213) }
```

If only the border color should be changed use the property `border-color`.

```
.border{ border-color:rgb(237, 212, 213) }
```

If you want to add a box shadow in that color use:

Here you see how a box with a 4 pixel `rgb(237, 212, 213)` colored shadow looks like.

```
.boxshadow{ -moz-box-shadow:4px 4px 4px  
4px rgb(237, 212, 213); -webkit-box-  
shadow:4px 4px 4px 4px rgb(237, 212, 213);  
box-shadow:4px 4px 4px 4px rgb(237, 212,  
213) }
```

Background

The CSS property to change the background color of an element to CIELCh 87, 9.223, 16.797 is called "background". The background property can be set on classes, ids or directly on the HTML element.

```
.background, #background, body{  
background: rgb(237, 212, 213) }
```

If only the background color should be changed can be used:

```
.background{ background-color: rgb(237,  
212, 213) }
```

This example shows the color as background, it is applied via the CSS property "background".

To optimize and compress your CSS code, you can use our [online CSS compressor and optimizer](#) based on csstidy. If you want to create a linear or radial gradient as background or border, check our [CSS Gradient Generator](#).

Hey! You found this booklet interesting? Support Converting Colors with the new Membership Option!

The pro membership hides all ads, plus gives you double the colors in the color bucket, and more awesome pro features!

[Learn more, Memberships starting at \\$2.50/m!](#)

**Follow me
on Twitter!**

@ConvertingColor