

Converting Colors

CIELCh(87, 9.485, 354.577)

Have a look what the booklet for
CIELCh(87, 9.485, 354.577) contains.

CIELCh(87, 9.695, 354.606)	3
<i>Conversions</i>	4
<i>Details</i>	6
<i>Harmonies</i>	11
<i>Previews</i>	20
<i>Color Blindness Simulation</i>	23
<i>CSS Examples</i>	26

Color

CIELCh(87, 9.695, 354.606)

Conversions

Conversions Part 1

Format	Color
Hex	ECD4DC
RGB	236, 212, 220
RGB Percent	93%, 83%, 86%
CMY	0.0749, 0.1690, 0.1377
CMYK	0.00, 0.10, 0.07, 0.07
HSL	340°, 39%, 88%
HSV	340°, 10%, 93%
XYZ	70.9738, 70.0064, 77.4047
YIQ	220.0880, 11.7360, 7.5760

Conversions

Conversions Part 2

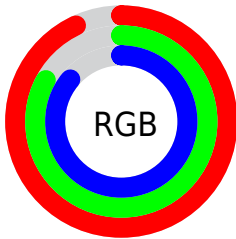
Format	Color
R _Y B	236, 212, 220
Decimal	15520988
CIE Lab	87.00, 9.65, -0.91
CIE LCh	87, 9.695, 354.606
Yxy	70.0064, 0.3250, 0.3206
Android (android.graphics.Color)	4293711068 (0xFFECD4DC)
YUV	220.0880, -0.0434, 13.9548
Hunter-Lab	83.6698, 4.9923, 3.7185

Details

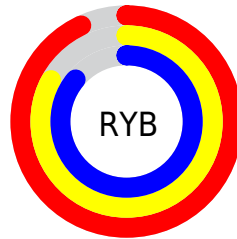
The CIELCh color $87, 9.695, 354.606$ is a light color, and the websafe version is hex `CCCCCC`. A complement of this color would be $91, 9.442, 172.813$, and the grayscale version is $88, 0.010, 296.813$.

A 20% lighter version of the original color is $100, 0.012, 296.813$, and $67, 9.893, 353.897$ is the 20% darker color. If you saturate the color by 10%, you get $81, 19.562, 355.730$, and if you desaturate by 10%, it is $93, 0.166, 350.544$.

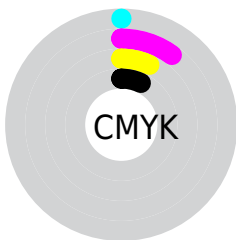
Distribution



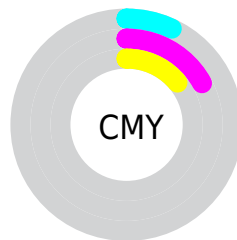
- Red (93%)
- Green (83%)
- Blue (86%)



- Red (93%)
- Yellow (83%)
- Blue (86%)



- Cyan (0%)
- Magenta (10%)
- Yellow (7%)
- Black (7%)



- Cyan (7%)
- Magenta (17%)
- Yellow (14%)

Brightness & Saturation Gradients

These gradients show how the CIELCh color 87, 9.695, 354.606 changes by changing the brightness by 10 percent. The first figure shows a shift by +10% for each color and the second figure -10%.

Similar to the brightness gradients but the following saturation gradients show a change of the CIELCh color 87, 9.695, 354.606 by changing the saturation by 10% instead.



87, 9.695, 354.606

87, 9.695, 354.606

81, 19.562,
355.730

93, 0.166, 350.544

75, 29.668,
357.008

99, 6.881, 183.350

99, 6.552, 199.092

69, 39.818,
358.521

64, 49.710, 0.355

60, 58.931, 2.631

56, 66.998, 5.505

53, 73.497, 9.157

51, 78.288, 13.736

50, 81.823, 19.017

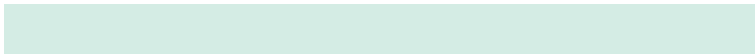
Harmonies

Complementary

The Complementary color scheme is a pair of colors which are on the opposite of each other on the color wheel.



87, 9.695, 354.606



91, 9.442, 172.813

Rectangle

The Rectangle color scheme consists of four colors that form a rectangle on the color wheel.



87, 9.695, 354.606



87, 9.695, 44.606



87, 9.695, 174.606



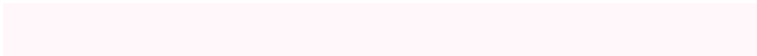
87, 9.695, 224.606

Sweetspot

The Sweet Spot groups the original color and five complimentary colors.



87, 9.693, 354.613



98, 3.006, 353.788



87, 13.844, 315.081



52, 2.282, 353.902



0, 0.000, 0.000



53, 0.007, 296.813

Same Dimension

The Same Dimension uses a secret algorithm to generate beautiful new colors.



87, 9.693, 354.613



92, 12.223, 354.815



88, 7.655, 35.576



46, 5.382, 354.538



38, 66.809, 17.963



7, 27.812, 7.360

Inverse Universe

The Inverse Universe completely reimagines the original color for something new.



87, 9.693, 354.613



92, 12.223, 354.815



91, 7.171, 215.905



46, 5.382, 354.538



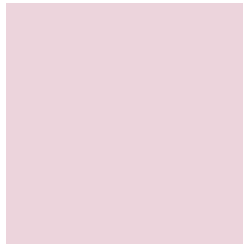
38, 66.809, 17.963



7, 27.812, 7.360

Previews

White Background



This preview shows how the CIELCh color 87, 9.695, 354.606 looks on a white background.

Color Contrast Check

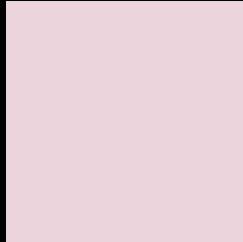
Large Text (above 18pt) WCAG AA × Fail

Any Text WCAG AA × Fail

Large Text (above 18pt) WCAG AAA × Fail

Any Text WCAG AAA × Fail

Black Background



This preview shows how the CIE LCh color 87, 9.695, 354.606 looks on a black background.

Color Contrast Check

Large Text (above 18pt) WCAG AA ✓ Pass

Any Text WCAG AA ✓ Pass

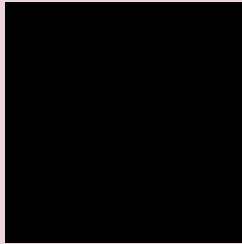
Large Text (above 18pt) WCAG AAA ✓ Pass

Any Text WCAG AAA ✓ Pass

If you want to check with other color combinations, try the [Color Contrast Checker](#).

CIELCh 87, 9.695, 354.606

Background



This preview shows how black text looks on a background with the CIELCh color 87, 9.695, 354.606.

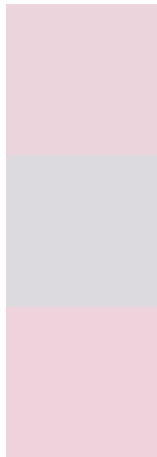


This preview shows how white text looks on a background with the CIELCh color 87, 9.695, 354.606.

Color Blindness Simulation

Color vision deficiency is a very complex topic, and I could not describe the different causes any better than Wikipedia does, so if you want to learn more, you should check out their [article about color blindness](#).

Dichromacy



Original Color

87, 9.695, 354.606

Protanopia

87, 3.339, 309.147

Deuteranopia

87, 10.913, 354.733



Tritanopia
87, 12.584, 338.715

Trichromacy



Original Color
87, 9.695, 354.606

Protanomaly
87, 5.423, 337.257

Deuteranomaly
87, 10.583, 353.838

Tritanomaly
87, 11.626, 344.541

Monochromacy



Original Color
87, 9.695, 354.606

Achromatopsia
88, 0.010, 296.813

Achromatomaly
87, 3.624, 353.916

CSS Examples

Text

The CSS property to change the color of the text to CIELCh 87, 9.695, 354.606 is called "color". The color property can be set on classes, ids or directly on the HTML element.

This example shows how text in the color `rgb(236, 212, 220)` looks like.

```
.text, #text, p{  
    color:rgb(236, 212, 220)  
}
```

If you want to add a text shadow in that color use the text-shadow property, you can generate a text shadow directly with our [CSS Text Shadow Generator](#).

Here you see how black text with a 4 pixel rgb(236, 212, 220) colored shadow looks like.

```
.shadow{ text-shadow: 4px 4px 2px rgb(236, 212, 220) }
```

Border

The CSS property to change the border of an element to CIELCh 87, 9.695, 354.606 is called "border". The border property can be set on classes, ids or directly on the HTML element.

This example shows the color as border, it can be applied via the CSS property "border" or "border-color".

```
.border, #border, table{ border:4px solid rgb(236, 212, 220) }
```

If only the border color should be changed use the property `border-color`.

```
.border{ border-color:rgb(236, 212, 220) }
```

If you want to add a box shadow in that color use:

Here you see how a box with a 4 pixel `rgb(236, 212, 220)` colored shadow looks like.

```
.boxshadow{ -moz-box-shadow:4px 4px 4px 4px rgb(236, 212, 220); -webkit-box-shadow:4px 4px 4px 4px rgb(236, 212, 220); box-shadow:4px 4px 4px 4px rgb(236, 212, 220) }
```

Background

The CSS property to change the background color of an element to CIELCh 87, 9.695, 354.606 is called "background". The background property can be set on classes, ids or directly on the HTML element.

```
.background, #background, body{  
background: rgb(236, 212, 220) }
```

If only the background color should be changed can be used:

```
.background{ background-color: rgb(236,  
212, 220) }
```

This example shows the color as background, it is applied via the CSS property "background".

To optimize and compress your CSS code, you can use our [online CSS compressor and optimizer](#) based on csstidy. If you want to create a linear or radial gradient as background or border, check our [CSS Gradient Generator](#).

Hey! You found this booklet interesting? Support Converting Colors with the new Membership Option!

The pro membership hides all ads, plus gives you double the colors in the color bucket, and more awesome pro features!

[Learn more, Memberships starting at \\$2.50/m!](#)

**Follow me
on Twitter!**

@ConvertingColor