

Converting Colors

CIELCh(88, 10.741, 20.206)

Have a look what the booklet for
CIELCh(88, 10.741, 20.206) contains.

CIELCh(88, 10.708, 20.137)	3
<i>Conversions</i>	4
<i>Details</i>	6
<i>Harmonies</i>	11
<i>Previews</i>	20
<i>Color Blindness Simulation</i>	23
<i>CSS Examples</i>	26

Color

CIELCh(88, 10.708, 20.137)

Conversions

Conversions Part 1

Format	Color
Hex	F3D6D6
RGB	243, 214, 214
RGB Percent	95%, 84%, 84%
CMY	0.0467, 0.1604, 0.1604
CMYK	0.00, 0.12, 0.12, 0.05
HSL	0°, 55%, 90%
HSV	0°, 12%, 95%
XYZ	73.2085, 72.0653, 73.7261
YIQ	222.6710, 17.2840, 6.1480

Conversions

Conversions Part 2

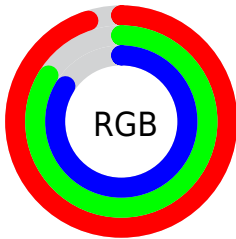
Format	Color
R _Y B	243, 214, 214
Decimal	15980246
CIE Lab	88.00, 10.05, 3.69
CIE LCh	88, 10.708, 20.137
Yxy	72.0653, 0.3343, 0.3291
Android (android.graphics.Color)	4294170326 (0xFFFF3D6D6)
YUV	222.6710, -4.2748, 17.8285
Hunter-Lab	84.8913, 5.3750, 7.9319

Details

The CIELCh color **88, 10.708, 20.137** is a light color, and the websafe version is hex **FFCCCC**. A complement of this color would be **94, 9.918, 198.834**, and the grayscale version is **89, 0.011, 296.813**.

A 20% lighter version of the original color is **100, 0.012, 296.813**, and **68, 10.981, 20.370** is the 20% darker color. If you saturate the color by 10%, you get **82, 20.473, 21.048**, and if you desaturate by 10%, it is **95, 1.666, 19.152**.

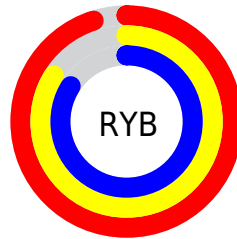
Distribution



Red (95%)

Green (84%)

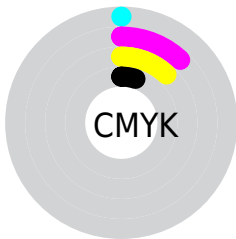
Blue (84%)



Red (95%)

Yellow (84%)

Blue (84%)

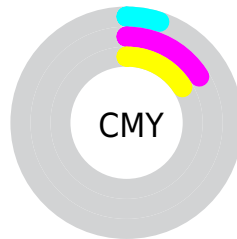


Cyan (0%)

Magenta (12%)

Yellow (12%)

Black (5%)



Cyan (5%)

Magenta (16%)

Yellow (16%)


Brightness & Saturation Gradients

These gradients show how the CIELCh color 88, 10.708, 20.137 changes by changing the brightness by 10 percent. The first figure shows a shift by +10% for each color and the second figure -10%.

Similar to the brightness gradients but the following saturation gradients show a change of the CIELCh color 88, 10.708, 20.137 by changing the saturation by 10% instead.

 88, 10.708, 20.137

 88, 10.708, 20.137

 100, 10.708,
20.137

 78, 10.708, 20.137

 68, 10.708, 20.137

 58, 10.708, 20.137

 48, 10.708, 20.137

 38, 10.708, 20.137

 28, 10.708, 20.137

 18, 10.708, 20.137

 8, 10.708, 20.137

 0, 10.708, 20.137

88, 10.708, 20.137

88, 10.708, 20.137

82, 20.473, 21.048

95, 1.666, 19.152

75, 30.963, 22.195

99, 4.111, 199.306

70, 42.102, 23.692

64, 53.717, 25.650

60, 65.517, 28.178

56, 77.090, 31.322

53, 87.820, 34.903

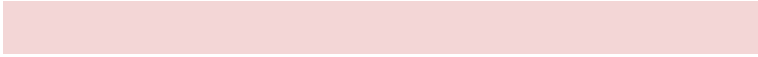
51, 96.446, 38.208

51, 100.853,
40.001

Harmonies

Complementary

The Complementary color scheme is a pair of colors which are on the opposite of each other on the color wheel.



88, 10.708, 20.137



94, 9.918, 198.834

Rectangle

The Rectangle color scheme consists of four colors that form a rectangle on the color wheel.



88, 10.708, 20.137



88, 10.708, 70.137



88, 10.708, 200.137



88, 10.708, 250.137

Sweetspot

The Sweet Spot groups the original color and five complimentary colors.



88, 10.706, 20.149



97, 3.616, 19.479



89, 18.306, 325.084



51, 2.577, 19.556



0, 0.000, 0.000



53, 0.007, 296.813

Same Dimension

The Same Dimension uses a secret algorithm to generate beautiful new colors.



88, 10.706, 20.149



90, 13.169, 20.323



92, 9.188, 73.908



48, 5.079, 19.952



39, 82.548, 40.001



8, 31.021, 25.015

Inverse Universe

The Inverse Universe completely reimagines the original color for something new.



94, 9.918, 198.834



98, 12.027, 198.716



90, 8.921, 257.064



50, 4.782, 198.978



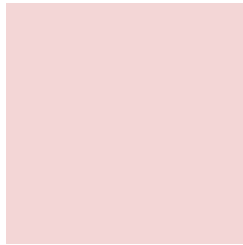
69, 39.552, 196.410



22, 17.586, 196.407

Previews

White Background



This preview shows how the CIELCh color 88, 10.708, 20.137 looks on a white background.

Color Contrast Check

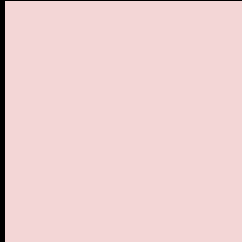
Large Text (above 18pt) WCAG AA × Fail

Any Text WCAG AA × Fail

Large Text (above 18pt) WCAG AAA × Fail

Any Text WCAG AAA × Fail

Black Background



This preview shows how the CIE LCh color 88, 10.708, 20.137 looks on a black background.

Color Contrast Check

Large Text (above 18pt) WCAG AA ✓ Pass

Any Text WCAG AA ✓ Pass

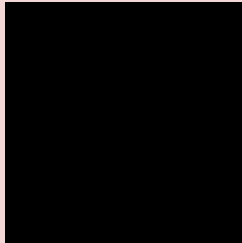
Large Text (above 18pt) WCAG AAA ✓ Pass

Any Text WCAG AAA ✓ Pass

If you want to check with other color combinations, try the [Color Contrast Checker](#).

CIELCh 88, 10.708, 20.137

Background



This preview shows how black text looks on a background with the CIELCh color 88, 10.708, 20.137.



This preview shows how white text looks on a background with the CIELCh color 88, 10.708, 20.137.

Color Blindness Simulation

Color vision deficiency is a very complex topic, and I could not describe the different causes any better than Wikipedia does, so if you want to learn more, you should check out their [article about color blindness](#).

Dichromacy



Original Color

88, 10.708, 20.137

Protanopia

88, 2.375, 60.303

Deuteranopia

88, 11.461, 20.196



Tritanopia
88, 14.562, 345.618

Trichromacy



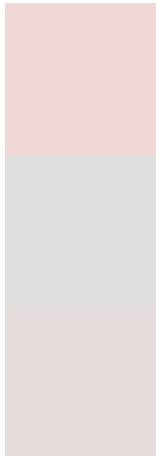
Original Color
88, 10.708, 20.137

Protanomaly
88, 5.208, 31.157

Deuteranomaly
88, 11.084, 20.167

Tritanomaly
88, 12.434, 355.609

Monochromacy



Original Color
88, 10.708, 20.137

Achromatopsia
89, 0.011, 296.813

Achromatomaly
89, 3.620, 19.500

CSS Examples

Text

The CSS property to change the color of the text to CIELCh 88, 10.708, 20.137 is called "color". The color property can be set on classes, ids or directly on the HTML element.

This example shows how text in the color `rgb(243, 214, 214)` looks like.

```
.text, #text, p{  
    color:rgb(243, 214, 214)  
}
```

If you want to add a text shadow in that color use the text-shadow property, you can generate a text shadow directly with our [CSS Text Shadow Generator](#).

Here you see how black text with a 4 pixel rgb(243, 214, 214) colored shadow looks like.

```
.shadow{ text-shadow: 4px 4px 2px rgb(243, 214, 214) }
```

Border

The CSS property to change the border of an element to CIELCh 88, 10.708, 20.137 is called "border". The border property can be set on classes, ids or directly on the HTML element.

This example shows the color as border, it can be applied via the CSS property "border" or "border-color".

```
.border, #border, table{ border:4px solid rgb(243, 214, 214) }
```

If only the border color should be changed use the property `border-color`.

```
.border{ border-color:rgb(243, 214, 214) }
```

If you want to add a box shadow in that color use:

Here you see how a box with a 4 pixel `rgb(243, 214, 214)` colored shadow looks like.

```
.boxshadow{ -moz-box-shadow:4px 4px 4px  
4px rgb(243, 214, 214); -webkit-box-  
shadow:4px 4px 4px 4px rgb(243, 214, 214);  
box-shadow:4px 4px 4px 4px rgb(243, 214,  
214) }
```

Background

The CSS property to change the background color of an element to CIELCh 88, 10.708, 20.137 is called "background". The background property can be set on classes, ids or directly on the HTML element.

```
.background, #background, body{  
background: rgb(243, 214, 214) }
```

If only the background color should be changed can be used:

```
.background{ background-color: rgb(243,  
214, 214) }
```

This example shows the color as background, it is applied via the CSS property "background".

To optimize and compress your CSS code, you can use our [online CSS compressor and optimizer](#) based on csstidy. If you want to create a linear or radial gradient as background or border, check our [CSS Gradient Generator](#).

Hey! You found this booklet interesting? Support Converting Colors with the new Membership Option!

The pro membership hides all ads, plus gives you double the colors in the color bucket, and more awesome pro features!

[Learn more, Memberships starting at \\$2.50/m!](#)

**Follow me
on Twitter!**

@ConvertingColor