

Converting Colors

CIELCh(88, 11.169, 57.375)

Have a look what the booklet for
CIELCh(88, 11.169, 57.375) contains.

CIELCh(88, 11.281, 56.571)	3
<i>Conversions</i>	4
<i>Details</i>	6
<i>Harmonies</i>	11
<i>Previews</i>	20
<i>Color Blindness Simulation</i>	23
<i>CSS Examples</i>	26

Color

CIELCh(88, 11.281, 56.571)

Conversions

Conversions Part 1

Format	Color
Hex	F0D8CB
RGB	240, 216, 203
RGB Percent	94%, 85%, 80%
CMY	0.0582, 0.1523, 0.2033
CMYK	0.00, 0.10, 0.15, 0.06
HSL	21°, 55%, 87%
HSV	21°, 15%, 94%
XYZ	71.3844, 72.0653, 66.7446
YIQ	221.6940, 18.4770, 1.0450

Conversions

Conversions Part 2

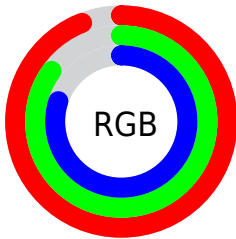
Format	Color
RYP	240, 223, 203
Decimal	15784139
CIELab	88.00, 6.21, 9.41
CIELCh	88, 11.281, 56.571
Yxy	72.0653, 0.3396, 0.3429
Android (android.graphics.Color)	4293974219 (0xFFFF0D8CB)
YUV	221.6940, -9.2161, 16.0544
Hunter-Lab	84.8913, 1.5395, 12.8079

Details

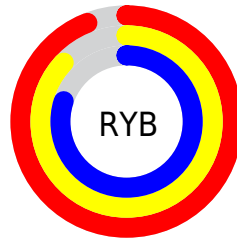
The CIELCh color **88, 11.281, 56.571** is a light color, and the websafe version is hex **FFCCCC**. A complement of this color would be **89, 10.449, 239.586**, and the grayscale version is **88, 0.011, 296.813**.

A 20% lighter version of the original color is **100, 0.012, 296.813**, and **68, 11.349, 55.319** is the 20% darker color. If you saturate the color by 10%, you get **84, 19.279, 55.801**, and if you desaturate by 10%, it is **92, 3.822, 57.337**.

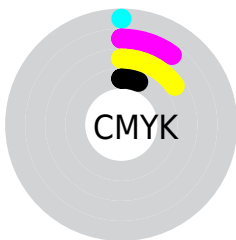
Distribution



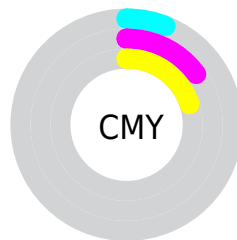
- Red (94%)
- Green (85%)
- Blue (80%)



- Red (94%)
- Yellow (87%)
- Blue (80%)



- Cyan (0%)
- Magenta (10%)
- Yellow (15%)
- Black (6%)



- Cyan (6%)
- Magenta (15%)
- Yellow (20%)


Brightness & Saturation Gradients

These gradients show how the CIELCh color 88, 11.281, 56.571 changes by changing the brightness by 10 percent. The first figure shows a shift by +10% for each color and the second figure -10%.

Similar to the brightness gradients but the following saturation gradients show a change of the CIELCh color 88, 11.281, 56.571 by changing the saturation by 10% instead.

 88, 11.281, 56.571

 88, 11.281, 56.571

 100, 11.281,
56.571

 78, 11.281, 56.571

 68, 11.281, 56.571

 58, 11.281, 56.571

 48, 11.281, 56.571

 38, 11.281, 56.571

 28, 11.281, 56.571

 18, 11.281, 56.571

 8, 11.281, 56.571

 0, 11.281, 56.571

88, 11.281, 56.571

88, 11.281, 56.571

84, 19.279, 55.801

92, 3.822, 57.337

79, 27.862, 55.064

97, 3.150, 238.526

75, 37.053, 54.397

99, 5.107, 199.211

71, 46.832, 53.808

68, 57.083, 53.275

64, 67.499, 52.716

61, 77.373, 51.906

58, 85.366, 50.386

57, 88.369, 49.534

Harmonies

Complementary

The Complementary color scheme is a pair of colors which are on the opposite of each other on the color wheel.



88, 11.281, 56.571



89, 10.449, 239.586

Rectangle

The Rectangle color scheme consists of four colors that form a rectangle on the color wheel.



88, 11.281, 56.571



88, 11.281, 106.571



88, 11.281, 236.571



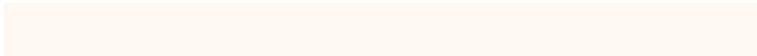
88, 11.281, 286.571

Sweetspot

The Sweet Spot groups the original color and five complimentary colors.



88, 11.281, 56.585



98, 3.704, 57.360



85, 18.369, 337.495



52, 2.534, 57.318



0, 0.000, 0.000



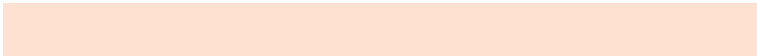
53, 0.007, 296.813

Same Dimension

The Same Dimension uses a secret algorithm to generate beautiful new colors.



88, 11.281, 56.585



92, 13.965, 56.375



93, 16.279, 101.541



48, 4.068, 57.052



44, 71.813, 50.156



12, 24.234, 46.515

Inverse Universe

The Inverse Universe completely reimagines the original color for something new.



89, 10.449, 239.586



93, 12.748, 239.909



84, 16.654, 285.131



48, 3.890, 238.944



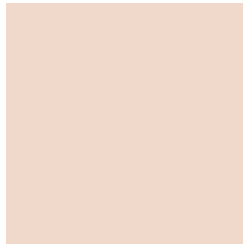
48, 41.847, 265.057



13, 16.769, 256.585

Previews

White Background



This preview shows how the CIELCh color 88, 11.281, 56.571 looks on a white background.

Color Contrast Check

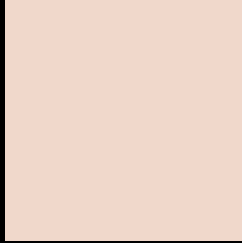
Large Text (above 18pt) WCAG AA × Fail

Any Text WCAG AA × Fail

Large Text (above 18pt) WCAG AAA × Fail

Any Text WCAG AAA × Fail

Black Background



This preview shows how the CIELCh color 88, 11.281, 56.571 looks on a black background.

Color Contrast Check

Large Text (above 18pt) WCAG AA ✓ Pass

Any Text WCAG AA ✓ Pass

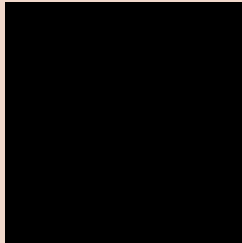
Large Text (above 18pt) WCAG AAA ✓ Pass

Any Text WCAG AAA ✓ Pass

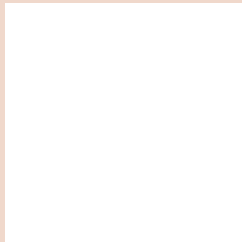
If you want to check with other color combinations, try the [Color Contrast Checker](#).

CIELCh 88, 11.281, 56.571

Background



This preview shows how black text looks on a background with the CIELCh color 88, 11.281, 56.571.

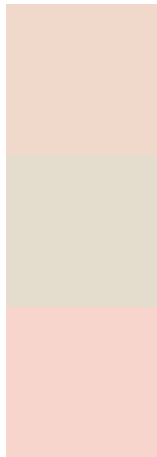


This preview shows how white text looks on a background with the CIELCh color 88, 11.281, 56.571.

Color Blindness Simulation

Color vision deficiency is a very complex topic, and I could not describe the different causes any better than Wikipedia does, so if you want to learn more, you should check out their [article about color blindness](#).

Dichromacy



Original Color

88, 11.281, 56.571

Protanopia

88, 8.331, 88.652

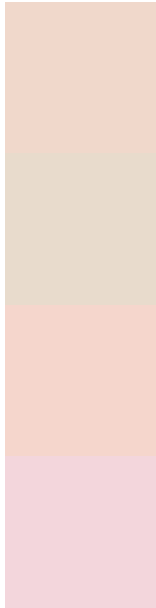
Deuteranopia

88, 14.023, 39.656



Tritanopia
88, 14.565, 343.065

Trichromacy



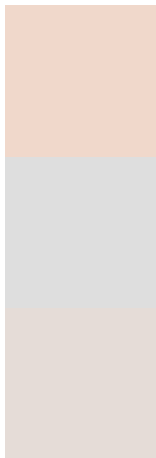
Original Color
88, 11.281, 56.571

Protanomaly
88, 9.172, 77.626

Deuteranomaly
88, 12.791, 44.012

Tritanomaly
88, 11.055, 3.827

Monochromacy



Original Color
88, 11.281, 56.571

Achromatopsia
88, 0.011, 296.813

Achromatomaly
88, 4.169, 57.985

CSS Examples

Text

The CSS property to change the color of the text to CIELCh 88, 11.281, 56.571 is called "color". The color property can be set on classes, ids or directly on the HTML element.

This example shows how text in the color `rgb(240, 216, 203)` looks like.

```
.text, #text, p{  
    color:rgb(240, 216, 203)  
}
```

If you want to add a text shadow in that color use the text-shadow property, you can generate a text shadow directly with our [CSS Text Shadow Generator](#).

Here you see how black text with a 4 pixel rgb(240, 216, 203) colored shadow looks like.

```
.shadow{ text-shadow: 4px 4px 2px rgb(240, 216, 203) }
```

Border

The CSS property to change the border of an element to CIELCh 88, 11.281, 56.571 is called "border". The border property can be set on classes, ids or directly on the HTML element.

This example shows the color as border, it can be applied via the CSS property "border" or "border-color".

```
.border, #border, table{ border:4px solid rgb(240, 216, 203) }
```

If only the border color should be changed use the property border-color.

```
.border{ border-color:rgb(240, 216, 203) }
```

If you want to add a box shadow in that color use:

Here you see how a box with a 4 pixel rgb(240, 216, 203) colored shadow looks like.

```
.boxshadow{ -moz-box-shadow:4px 4px 4px  
4px rgb(240, 216, 203); -webkit-box-  
shadow:4px 4px 4px 4px rgb(240, 216, 203);  
box-shadow:4px 4px 4px 4px rgb(240, 216,  
203) }
```

Background

The CSS property to change the background color of an element to CIELCh 88, 11.281, 56.571 is called "background". The background property can be set on classes, ids or directly on the HTML element.

```
.background, #background, body{  
background: rgb(240, 216, 203) }
```

If only the background color should be changed can be used:

```
.background{ background-color: rgb(240,  
216, 203) }
```

This example shows the color as background, it is applied via the CSS property "background".

To optimize and compress your CSS code, you can use our [online CSS compressor and optimizer](#) based on csstidy. If you want to create a linear or radial gradient as background or border, check our [CSS Gradient Generator](#).

Hey! You found this booklet interesting? Support Converting Colors with the new Membership Option!

The pro membership hides all ads, plus gives you double the colors in the color bucket, and more awesome pro features!

[Learn more, Memberships starting at \\$2.50/m!](#)

**Follow me
on Twitter!**

@ConvertingColor