

Converting Colors

CIELCh(88, 6.273, 10.241)

Have a look what the booklet for
CIELCh(88, 6.273, 10.241) contains.

CIELCh(88, 6.279, 10.244)	3
<i>Conversions</i>	4
<i>Details</i>	6
<i>Harmonies</i>	11
<i>Previews</i>	20
<i>Color Blindness Simulation</i>	23
<i>CSS Examples</i>	26

Color

CIELCh(88, 6.279, 10.244)

Conversions

Conversions Part 1

Format	Color
Hex	EAD9DB
RGB	234, 217, 219
RGB Percent	92%, 85%, 86%
CMY	0.0832, 0.1499, 0.1421
CMYK	0.00, 0.07, 0.06, 0.08
HSL	353°, 29%, 88%
HSV	353°, 7%, 92%
XYZ	71.3675, 72.0653, 77.0100
YIQ	222.3110, 9.4900, 4.2260

Conversions

Conversions Part 2

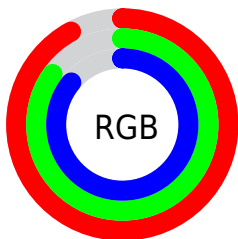
Format	Color
R _Y B	234, 217, 219
Decimal	15391195
CIE Lab	88.00, 6.18, 1.12
CIE LCh	88, 6.279, 10.244
Yxy	72.0653, 0.3237, 0.3269
Android (android.graphics.Color)	4293581275 (0xFFEAD9DB)
YUV	222.3110, -1.6323, 10.2513
Hunter-Lab	84.8913, 1.5040, 5.6384

Details

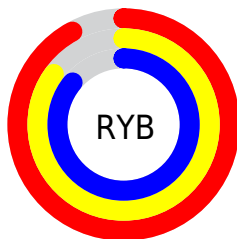
The CIELCh color **88, 6.279, 10.244** is a light color, and the websafe version is hex **CCCCCC**. A complement of this color would be **91, 6.055, 189.253**, and the grayscale version is **89, 0.011, 296.813**.

A 20% lighter version of the original color is **100, 0.012, 296.813**, and **68, 6.260, 9.822** is the 20% darker color. If you saturate the color by 10%, you get **82, 15.391, 11.309**, and if you desaturate by 10%, it is **94, 2.278, 189.791**.

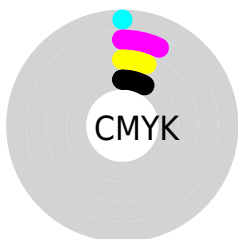
Distribution



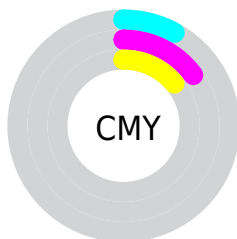
- Red (92%)
- Green (85%)
- Blue (86%)



- Red (92%)
- Yellow (85%)
- Blue (86%)



- Cyan (0%)
- Magenta (7%)
- Yellow (6%)
- Black (8%)



- Cyan (8%)
- Magenta (15%)
- Yellow (14%)

Brightness & Saturation Gradients

These gradients show how the CIELCh color 88, 6.279, 10.244 changes by changing the brightness by 10 percent. The first figure shows a shift by +10% for each color and the second figure -10%.

Similar to the brightness gradients but the following saturation gradients show a change of the CIELCh color 88, 6.279, 10.244 by changing the saturation by 10% instead.

 88, 6.279, 10.244

 88, 6.279, 10.244

 100, 6.279, 10.244

 78, 6.279, 10.244

 68, 6.279, 10.244

 58, 6.279, 10.244

 48, 6.279, 10.244

 38, 6.279, 10.244

 28, 6.279, 10.244

 18, 6.279, 10.244

 8, 6.279, 10.244

 0, 6.279, 10.244

88, 6.279, 10.244

88, 6.279, 10.244

82, 15.391, 11.309

94, 2.278, 189.791

76, 25.044, 12.537

99, 7.263, 199.037

70, 35.151, 14.049

65, 45.545, 15.952

60, 55.952, 18.373

56, 66.020, 21.451

52, 75.392, 25.282

50, 83.782, 29.794

49, 90.885, 34.513

Harmonies

Complementary

The Complementary color scheme is a pair of colors which are on the opposite of each other on the color wheel.



88, 6.279, 10.244



91, 6.055, 189.253

Rectangle

The Rectangle color scheme consists of four colors that form a rectangle on the color wheel.



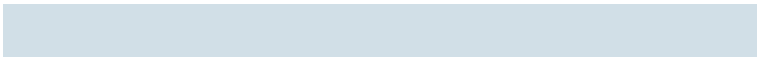
88, 6.279, 10.244



88, 6.279, 60.244



88, 6.279, 190.244



88, 6.279, 240.244

Sweetspot

The Sweet Spot groups the original color and five complimentary colors.



88, 6.277, 10.260



99, 1.824, 9.553



88, 10.346, 321.083



53, 1.037, 9.526



0, 0.000, 0.000



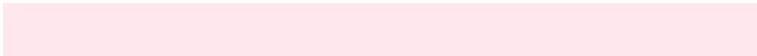
53, 0.007, 296.813

Same Dimension

The Same Dimension uses a secret algorithm to generate beautiful new colors.



88, 6.277, 10.260



94, 8.386, 10.442



90, 5.068, 59.056



46, 4.954, 10.485



38, 75.804, 34.837



7, 28.100, 17.903

Inverse Universe

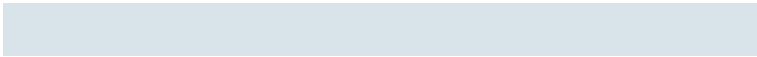
The Inverse Universe completely reimagines the original color for something new.



88, 6.277, 10.260



94, 8.386, 10.442



90, 4.912, 240.651



46, 4.954, 10.485



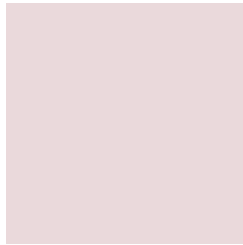
38, 75.804, 34.837



7, 28.100, 17.903

Previews

White Background



This preview shows how the CIELCh color 88, 6.279, 10.244 looks on a white background.

Color Contrast Check

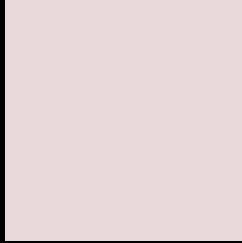
Large Text (above 18pt) WCAG AA × Fail

Any Text WCAG AA × Fail

Large Text (above 18pt) WCAG AAA × Fail

Any Text WCAG AAA × Fail

Black Background



This preview shows how the CIE LCh color 88, 6.279, 10.244 looks on a black background.

Color Contrast Check

Large Text (above 18pt) WCAG AA ✓ Pass

Any Text WCAG AA ✓ Pass

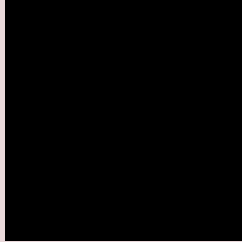
Large Text (above 18pt) WCAG AAA ✓ Pass

Any Text WCAG AAA ✓ Pass

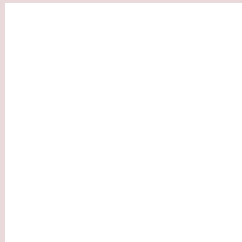
If you want to check with other color combinations, try the [Color Contrast Checker](#).

CIELCh 88, 6.279, 10.244

Background



This preview shows how black text looks on a background with the CIELCh color 88, 6.279, 10.244.

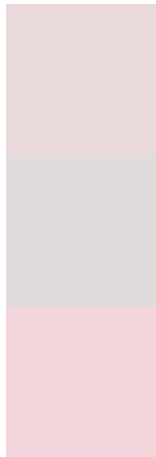


This preview shows how white text looks on a background with the CIELCh color 88, 6.279, 10.244.

Color Blindness Simulation

Color vision deficiency is a very complex topic, and I could not describe the different causes any better than Wikipedia does, so if you want to learn more, you should check out their [article about color blindness](#).

Dichromacy



Original Color

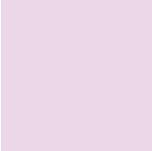
88, 6.279, 10.244

Protanopia

88, 1.803, 19.205

Deuteranopia

88, 10.575, 5.939



Tritanopia
88, 11.660, 330.719

Trichromacy



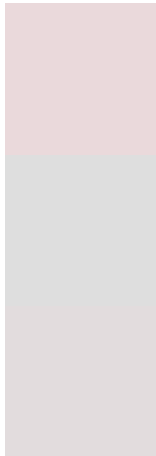
Original Color
88, 6.279, 10.244

Protanomaly
88, 3.301, 10.394

Deuteranomaly
88, 9.014, 6.690

Tritanomaly
88, 8.954, 340.207

Monochromacy



Original Color
88, 6.279, 10.244

Achromatopsia
88, 0.011, 296.813

Achromatomaly
88, 2.231, 5.804

CSS Examples

Text

The CSS property to change the color of the text to CIELCh 88, 6.279, 10.244 is called "color". The color property can be set on classes, ids or directly on the HTML element.

This example shows how text in the color `rgb(234, 217, 219)` looks like.

```
.text, #text, p{  
    color:rgb(234, 217, 219)  
}
```

If you want to add a text shadow in that color use the text-shadow property, you can generate a text shadow directly with our [CSS Text Shadow Generator](#).

Here you see how black text with a 4 pixel rgb(234, 217, 219) colored shadow looks like.

```
.shadow{ text-shadow: 4px 4px 2px rgb(234, 217, 219) }
```

Border

The CSS property to change the border of an element to CIELCh 88, 6.279, 10.244 is called "border". The border property can be set on classes, ids or directly on the HTML element.

This example shows the color as border, it can be applied via the CSS property "border" or "border-color".

```
.border, #border, table{ border:4px solid rgb(234, 217, 219) }
```

If only the border color should be changed use the property `border-color`.

```
.border{ border-color:rgb(234, 217, 219) }
```

If you want to add a box shadow in that color use:

Here you see how a box with a 4 pixel `rgb(234, 217, 219)` colored shadow looks like.

```
.boxshadow{ -moz-box-shadow:4px 4px 4px  
4px rgb(234, 217, 219); -webkit-box-  
shadow:4px 4px 4px 4px rgb(234, 217, 219);  
box-shadow:4px 4px 4px 4px rgb(234, 217,  
219) }
```

Background

The CSS property to change the background color of an element to CIELCh 88, 6.279, 10.244 is called "background". The background property can be set on classes, ids or directly on the HTML element.

```
.background, #background, body{  
background: rgb(234, 217, 219) }
```

If only the background color should be changed can be used:

```
.background{ background-color: rgb(234,  
217, 219) }
```

This example shows the color as background, it is applied via the CSS property "background".

To optimize and compress your CSS code, you can use our [online CSS compressor and optimizer](#) based on csstidy. If you want to create a linear or radial gradient as background or border, check our [CSS Gradient Generator](#).

Hey! You found this booklet interesting? Support Converting Colors with the new Membership Option!

The pro membership hides all ads, plus gives you double the colors in the color bucket, and more awesome pro features!

[Learn more, Memberships starting at \\$2.50/m!](#)

**Follow me
on Twitter!**

@ConvertingColor