

Converting Colors

CIELCh(88, 7.702, 16.029)

Have a look what the booklet for
CIELCh(88, 7.702, 16.029) contains.

CIELCh(88, 7.702, 16.029)	3
<i>Conversions</i>	4
<i>Details</i>	6
<i>Harmonies</i>	11
<i>Previews</i>	20
<i>Color Blindness Simulation</i>	23
<i>CSS Examples</i>	26

Color

CIELCh(88, 7.702, 16.029)

Conversions

Conversions Part 1

Format	Color
Hex	EDD8D9
RGB	237, 216, 217
RGB Percent	93%, 85%, 85%
CMY	0.0709, 0.1532, 0.1493
CMYK	0.00, 0.09, 0.08, 0.07
HSL	357°, 37%, 89%
HSV	357°, 9%, 93%
XYZ	71.9455, 72.0653, 75.7079
YIQ	222.3930, 12.1950, 4.7630

Conversions

Conversions Part 2

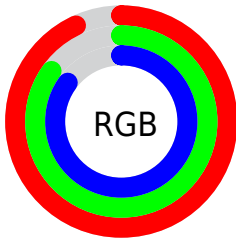
Format	Color
R _Y B	237, 216, 217
Decimal	15587545
CIE Lab	88.00, 7.40, 2.13
CIE LCh	88, 7.702, 16.029
Yxy	72.0653, 0.3274, 0.3280
Android (android.graphics.Color)	4293777625 (0xFFEDD8D9)
YUV	222.3930, -2.6587, 12.8103
Hunter-Lab	84.8913, 2.7194, 6.5478

Details

The CIELCh color **88, 7.702, 16.029** is a light color, and the websafe version is hex **CCCCCC**. A complement of this color would be **92, 7.315, 194.955**, and the grayscale version is **89, 0.011, 296.813**.

A 20% lighter version of the original color is **100, 0.012, 296.813**, and **68, 7.773, 16.019** is the 20% darker color. If you saturate the color by 10%, you get **82, 16.998, 16.999**, and if you desaturate by 10%, it is **94, 0.952, 196.044**.

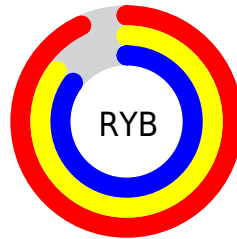
Distribution



Red (93%)

Green (85%)

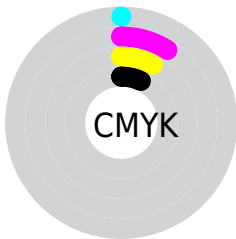
Blue (85%)



Red (93%)

Yellow (85%)

Blue (85%)

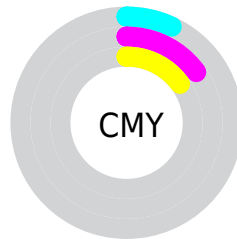


Cyan (0%)

Magenta (9%)

Yellow (8%)

Black (7%)



Cyan (7%)

Magenta (15%)

Yellow (15%)

Brightness & Saturation Gradients

These gradients show how the CIELCh color 88, 7.702, 16.029 changes by changing the brightness by 10 percent. The first figure shows a shift by +10% for each color and the second figure -10%.

Similar to the brightness gradients but the following saturation gradients show a change of the CIELCh color 88, 7.702, 16.029 by changing the saturation by 10% instead.



88, 7.702, 16.029

88, 7.702, 16.029

82, 16.998, 16.999

94, 0.952, 196.044

76, 26.937, 18.162

99, 6.206, 199.119

70, 37.450, 19.638

64, 48.381, 21.536

60, 59.468, 23.979

56, 70.360, 27.073

53, 80.640, 30.817

51, 89.735, 34.898

50, 96.480, 38.344

Harmonies

Complementary

The Complementary color scheme is a pair of colors which are on the opposite of each other on the color wheel.



88, 7.702, 16.029



92, 7.315, 194.955

Rectangle

The Rectangle color scheme consists of four colors that form a rectangle on the color wheel.



88, 7.702, 16.029



88, 7.702, 66.029



88, 7.702, 196.029



88, 7.702, 246.029

Sweetspot

The Sweet Spot groups the original color and five complimentary colors.



88, 7.700, 16.044



98, 2.710, 15.436



88, 13.089, 323.536



52, 2.060, 15.546



0, 0.000, 0.000



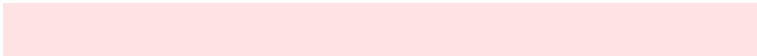
53, 0.007, 296.813

Same Dimension

The Same Dimension uses a secret algorithm to generate beautiful new colors.



88, 7.700, 16.044



92, 10.228, 16.242



90, 6.447, 68.732



46, 4.908, 16.098



38, 78.812, 38.078



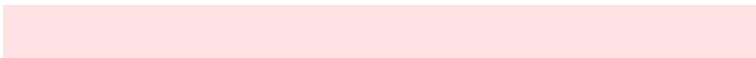
7, 28.337, 20.788

Inverse Universe

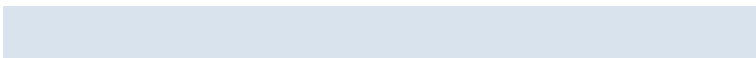
The Inverse Universe completely reimagines the original color for something new.



88, 7.700, 16.044



92, 10.228, 16.242



90, 6.271, 250.978



46, 4.908, 16.098



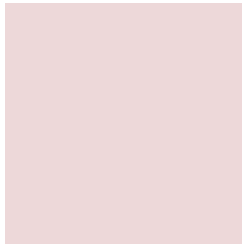
38, 78.812, 38.078



7, 28.337, 20.788

Previews

White Background



This preview shows how the CIELCh color 88, 7.702, 16.029 looks on a white background.

Color Contrast Check

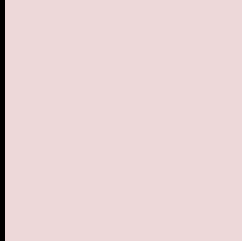
Large Text (above 18pt) WCAG AA × Fail

Any Text WCAG AA × Fail

Large Text (above 18pt) WCAG AAA × Fail

Any Text WCAG AAA × Fail

Black Background



This preview shows how the CIE LCh color 88, 7.702, 16.029 looks on a black background.

Color Contrast Check

Large Text (above 18pt) WCAG AA ✓ Pass

Any Text WCAG AA ✓ Pass

Large Text (above 18pt) WCAG AAA ✓ Pass

Any Text WCAG AAA ✓ Pass

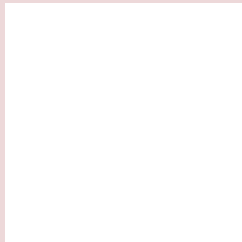
If you want to check with other color combinations, try the [Color Contrast Checker](#).

CIELCh 88, 7.702, 16.029

Background



This preview shows how black text looks on a background with the CIELCh color 88, 7.702, 16.029.

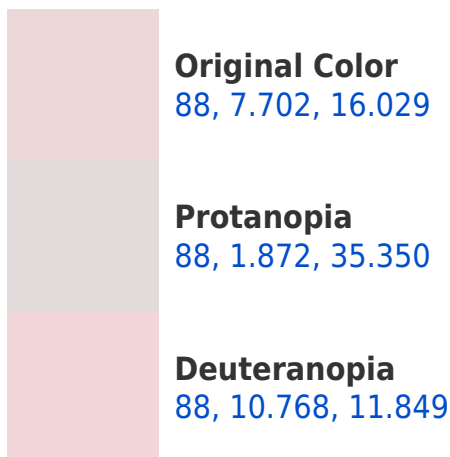


This preview shows how white text looks on a background with the CIELCh color 88, 7.702, 16.029.

Color Blindness Simulation

Color vision deficiency is a very complex topic, and I could not describe the different causes any better than Wikipedia does, so if you want to learn more, you should check out their [article about color blindness](#).

Dichromacy





Tritanopia
88, 12.641, 335.810

Trichromacy



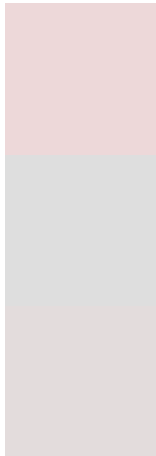
Original Color
88, 7.702, 16.029

Protanomaly
88, 3.661, 27.663

Deuteranomaly
88, 9.597, 13.851

Tritanomaly
88, 10.114, 345.623

Monochromacy



Original Color
88, 7.702, 16.029

Achromatopsia
88, 0.011, 296.813

Achromatomaly
88, 2.528, 19.352

CSS Examples

Text

The CSS property to change the color of the text to CIELCh 88, 7.702, 16.029 is called "color". The color property can be set on classes, ids or directly on the HTML element.

This example shows how text in the color `rgb(237, 216, 217)` looks like.

```
.text, #text, p{  
    color:rgb(237, 216, 217)  
}
```

If you want to add a text shadow in that color use the text-shadow property, you can generate a text shadow directly with our [CSS Text Shadow Generator](#).

Here you see how black text with a 4 pixel rgb(237, 216, 217) colored shadow looks like.

```
.shadow{ text-shadow: 4px 4px 2px rgb(237, 216, 217) }
```

Border

The CSS property to change the border of an element to CIELCh 88, 7.702, 16.029 is called "border". The border property can be set on classes, ids or directly on the HTML element.

This example shows the color as border, it can be applied via the CSS property "border" or "border-color".

```
.border, #border, table{ border:4px solid rgb(237, 216, 217) }
```

If only the border color should be changed use the property border-color.

```
.border{ border-color:rgb(237, 216, 217) }
```

If you want to add a box shadow in that color use:

Here you see how a box with a 4 pixel rgb(237, 216, 217) colored shadow looks like.

```
.boxshadow{ -moz-box-shadow:4px 4px 4px  
4px rgb(237, 216, 217); -webkit-box-  
shadow:4px 4px 4px 4px rgb(237, 216, 217);  
box-shadow:4px 4px 4px 4px rgb(237, 216,  
217) }
```

Background

The CSS property to change the background color of an element to CIELCh 88, 7.702, 16.029 is called "background". The background property can be set on classes, ids or directly on the HTML element.

```
.background, #background, body{  
background: rgb(237, 216, 217) }
```

If only the background color should be changed can be used:

```
.background{ background-color: rgb(237,  
216, 217) }
```

This example shows the color as background, it is applied via the CSS property "background".

To optimize and compress your CSS code, you can use our [online CSS compressor and optimizer](#) based on csstidy. If you want to create a linear or radial gradient as background or border, check our [CSS Gradient Generator](#).

Hey! You found this booklet interesting? Support Converting Colors with the new Membership Option!

The pro membership hides all ads, plus gives you double the colors in the color bucket, and more awesome pro features!

[Learn more, Memberships starting at \\$2.50/m!](#)

**Follow me
on Twitter!**

@ConvertingColor