

Converting Colors

CIELCh(88, 9.804, 18.835)

Have a look what the booklet for
CIELCh(88, 9.804, 18.835) contains.

CIELCh(88, 9.571, 20.044)	3
<i>Conversions</i>	4
<i>Details</i>	6
<i>Harmonies</i>	11
<i>Previews</i>	20
<i>Color Blindness Simulation</i>	23
<i>CSS Examples</i>	26

Color

CIELCh(88, 9.571, 20.044)

Conversions

Conversions Part 1

Format	Color
Hex	F1D7D7
RGB	241, 215, 215
RGB Percent	95%, 84%, 84%
CMY	0.0557, 0.1576, 0.1576
CMYK	0.00, 0.11, 0.11, 0.06
HSL	0°, 48%, 89%
HSV	0°, 11%, 94%
XYZ	72.7007, 72.0653, 74.2386
YIQ	222.7740, 15.4960, 5.5120

Conversions

Conversions Part 2

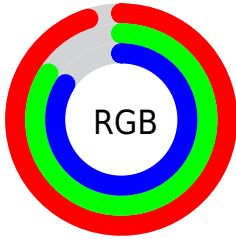
Format	Color
R _Y B	241, 215, 215
Decimal	15849431
CIE Lab	88.00, 8.99, 3.28
CIE LCh	88, 9.571, 20.044
Yxy	72.0653, 0.3320, 0.3291
Android (android.graphics.Color)	4294039511 (0xFFFF1D7D7)
YUV	222.7740, -3.8326, 15.9842
Hunter-Lab	84.8913, 4.3072, 7.5739

Details

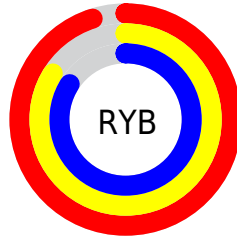
The CIELCh color **88, 9.571, 20.044** is a light color, and the websafe version is hex **FFCCCC**. A complement of this color would be **93, 8.933, 198.901**, and the grayscale version is **89, 0.011, 296.813**.

A 20% lighter version of the original color is **100, 0.012, 296.813**, and **68, 9.768, 20.248** is the 20% darker color. If you saturate the color by 10%, you get **82, 19.178, 20.935**, and if you desaturate by 10%, it is **95, 0.679, 18.535**.

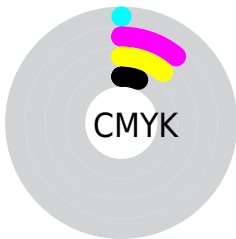
Distribution



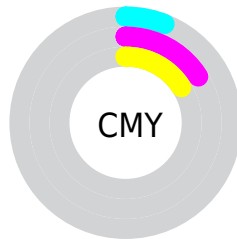
- Red (95%)
- Green (84%)
- Blue (84%)



- Red (95%)
- Yellow (84%)
- Blue (84%)



- Cyan (0%)
- Magenta (11%)
- Yellow (11%)
- Black (6%)



- Cyan (6%)
- Magenta (16%)
- Yellow (16%)

Brightness & Saturation Gradients

These gradients show how the CIELCh color 88, 9.571, 20.044 changes by changing the brightness by 10 percent. The first figure shows a shift by +10% for each color and the second figure -10%.

Similar to the brightness gradients but the following saturation gradients show a change of the CIELCh color 88, 9.571, 20.044 by changing the saturation by 10% instead.



88, 9.571, 20.044

88, 9.571, 20.044

82, 19.178, 20.935

95, 0.679, 18.535

75, 29.507, 22.048

99, 4.890, 199.231

70, 40.494, 23.498

64, 51.978, 25.396

59, 63.685, 27.852

56, 75.222, 30.924

53, 86.014, 34.475

51, 94.927, 37.874

50, 100.135,
40.001

Harmonies

Complementary

The Complementary color scheme is a pair of colors which are on the opposite of each other on the color wheel.



88, 9.571, 20.044



93, 8.933, 198.901

Rectangle

The Rectangle color scheme consists of four colors that form a rectangle on the color wheel.



88, 9.571, 20.044



88, 9.571, 70.044



88, 9.571, 200.044



88, 9.571, 250.044

Sweetspot

The Sweet Spot groups the original color and five complimentary colors.



88, 9.569, 20.057



98, 2.702, 19.356



89, 16.427, 325.019



52, 2.054, 19.457



0, 0.000, 0.000



53, 0.007, 296.813

Same Dimension

The Same Dimension uses a secret algorithm to generate beautiful new colors.



88, 9.569, 20.057



91, 12.180, 20.240



91, 8.227, 74.045



47, 4.992, 19.951



38, 81.700, 39.997



8, 29.833, 23.815

Inverse Universe

The Inverse Universe completely reimagines the original color for something new.



93, 8.933, 198.901



98, 11.200, 198.772



90, 8.015, 256.902



49, 4.700, 198.980



68, 39.148, 196.411



21, 17.090, 196.407

Previews

White Background



This preview shows how the CIELCh color 88, 9.571, 20.044 looks on a white background.

Color Contrast Check

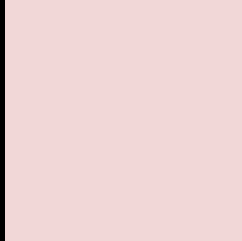
Large Text (above 18pt) WCAG AA × Fail

Any Text WCAG AA × Fail

Large Text (above 18pt) WCAG AAA × Fail

Any Text WCAG AAA × Fail

Black Background



This preview shows how the CIE LCh color 88, 9.571, 20.044 looks on a black background.

Color Contrast Check

Large Text (above 18pt) WCAG AA ✓ Pass

Any Text WCAG AA ✓ Pass

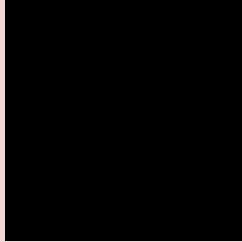
Large Text (above 18pt) WCAG AAA ✓ Pass

Any Text WCAG AAA ✓ Pass

If you want to check with other color combinations, try the [Color Contrast Checker](#).

CIELCh 88, 9.571, 20.044

Background



This preview shows how black text looks on a background with the CIELCh color 88, 9.571, 20.044.



This preview shows how white text looks on a background with the CIELCh color 88, 9.571, 20.044.

Color Blindness Simulation

Color vision deficiency is a very complex topic, and I could not describe the different causes any better than Wikipedia does, so if you want to learn more, you should check out their [article about color blindness](#).

Dichromacy



Original Color

88, 9.571, 20.044

Protanopia

88, 2.074, 49.335

Deuteranopia

88, 11.077, 17.491



Tritanopia
88, 13.674, 342.885

Trichromacy



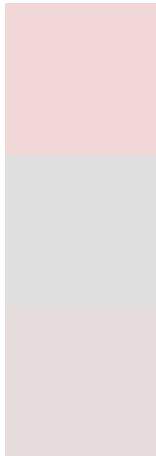
Original Color
88, 9.571, 20.044

Protanomaly
88, 4.758, 25.889

Deuteranomaly
88, 10.702, 17.366

Tritanomaly
88, 11.433, 353.180

Monochromacy



Original Color
88, 9.571, 20.044

Achromatopsia
89, 0.011, 296.813

Achromatomaly
88, 3.256, 19.456

CSS Examples

Text

The CSS property to change the color of the text to CIELCh 88, 9.571, 20.044 is called "color". The color property can be set on classes, ids or directly on the HTML element.

This example shows how text in the color `rgb(241, 215, 215)` looks like.

```
.text, #text, p{  
    color:rgb(241, 215, 215)  
}
```

If you want to add a text shadow in that color use the text-shadow property, you can generate a text shadow directly with our [CSS Text Shadow Generator](#).

Here you see how black text with a 4 pixel rgb(241, 215, 215) colored shadow looks like.

```
.shadow{ text-shadow: 4px 4px 2px rgb(241, 215, 215) }
```

Border

The CSS property to change the border of an element to CIELCh 88, 9.571, 20.044 is called "border". The border property can be set on classes, ids or directly on the HTML element.

This example shows the color as border, it can be applied via the CSS property "border" or "border-color".

```
.border, #border, table{ border:4px solid rgb(241, 215, 215) }
```

If only the border color should be changed use the property border-color.

```
.border{ border-color:rgb(241, 215, 215) }
```

If you want to add a box shadow in that color use:

Here you see how a box with a 4 pixel rgb(241, 215, 215) colored shadow looks like.

```
.boxshadow{ -moz-box-shadow:4px 4px 4px  
4px rgb(241, 215, 215); -webkit-box-  
shadow:4px 4px 4px 4px rgb(241, 215, 215);  
box-shadow:4px 4px 4px 4px rgb(241, 215,  
215) }
```

Background

The CSS property to change the background color of an element to CIELCh 88, 9.571, 20.044 is called "background". The background property can be set on classes, ids or directly on the HTML element.

```
.background, #background, body{  
background: rgb(241, 215, 215) }
```

If only the background color should be changed can be used:

```
.background{ background-color: rgb(241,  
215, 215) }
```

This example shows the color as background, it is applied via the CSS property "background".

To optimize and compress your CSS code, you can use our [online CSS compressor and optimizer](#) based on csstidy. If you want to create a linear or radial gradient as background or border, check our [CSS Gradient Generator](#).

Hey! You found this booklet interesting? Support Converting Colors with the new Membership Option!

The pro membership hides all ads, plus gives you double the colors in the color bucket, and more awesome pro features!

[Learn more, Memberships starting at \\$2.50/m!](#)

**Follow me
on Twitter!**

@ConvertingColor