

# Converting Colors

CIELCh(89, 10.007, 38.942)

Have a look what the booklet for  
CIELCh(89, 10.007, 38.942) contains.

<b>CIELCh(89, 10.134, 37.829)</b> .....	3
<i><b>Conversions</b></i> .....	4
<i><b>Details</b></i> .....	6
<i><b>Harmonies</b></i> .....	11
<i><b>Previews</b></i> .....	20
<i><b>Color Blindness Simulation</b></i> .....	23
<i><b>CSS Examples</b></i> .....	26

# Color

**CIELCh(89, 10.134, 37.829)**

# Conversions

## Conversions Part 1

Format	Color
Hex	F4DAD4
RGB	244, 218, 212
RGB Percent	96%, 85%, 83%
CMY	0.0430, 0.1449, 0.1684
CMYK	0.00, 0.11, 0.13, 0.04
HSL	11°, 59%, 89%
HSV	11°, 13%, 96%
XYZ	74.2973, 74.1641, 72.7173
YIQ	225.0900, 17.4220, 3.6460

# Conversions

## Conversions Part 2

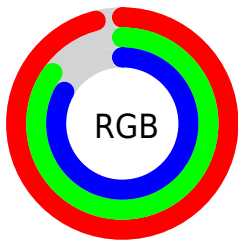
Format	Color
R <sub>Y</sub> B	244, 219, 212
Decimal	16046804
CIE Lab	89.00, 8.00, 6.22
CIE LCh	89, 10.134, 37.829
Yxy	74.1641, 0.3359, 0.3353
Android (android.graphics.Color)	4294236884 (0xFFF4DAD4)
YUV	225.0900, -6.4534, 16.5841
Hunter-Lab	86.1186, 3.2903, 10.2194

# Details

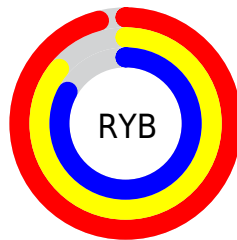
The CIELCh color **89, 10.134, 37.829** is a light color, and the websafe version is hex **FFCCCC**. A complement of this color would be **92, 9.308, 218.453**, and the grayscale version is **90, 0.011, 296.813**.

A 20% lighter version of the original color is **100, 0.012, 296.813**, and **69, 10.407, 38.479** is the 20% darker color. If you saturate the color by 10%, you get **84, 18.627, 37.888**, and if you desaturate by 10%, it is **94, 2.307, 37.732**.

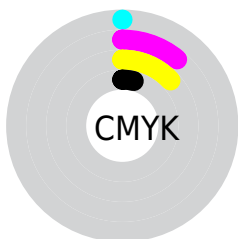
# Distribution



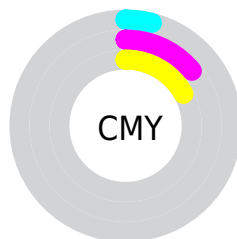
- Red (96%)
- Green (85%)
- Blue (83%)



- Red (96%)
- Yellow (86%)
- Blue (83%)



- Cyan (0%)
- Magenta (11%)
- Yellow (13%)
- Black (4%)



- Cyan (4%)
- Magenta (14%)
- Yellow (17%)

# Brightness & Saturation Gradients


These gradients show how the CIELCh color 89, 10.134, 37.829 changes by changing the brightness by 10 percent. The first figure shows a shift by +10% for each color and the second figure -10%.

Similar to the brightness gradients but the following saturation gradients show a change of the CIELCh color 89, 10.134, 37.829 by changing the saturation by 10% instead.



 89, 10.134, 37.829

 89, 10.134, 37.829

 100, 10.134,  
37.829

 79, 10.134, 37.829

 69, 10.134, 37.829

 59, 10.134, 37.829

 49, 10.134, 37.829

 39, 10.134, 37.829

 29, 10.134, 37.829

 19, 10.134, 37.829

 9, 10.134, 37.829

 0, 10.134, 37.829

89, 10.134, 37.829

89, 10.134, 37.829

84, 18.627, 37.888

94, 2.307, 37.732

78, 27.839, 38.068

99, 3.783, 199.340

73, 37.789, 38.435

69, 48.450, 39.034

64, 59.706, 39.888

60, 71.282, 40.968

57, 82.553, 42.091

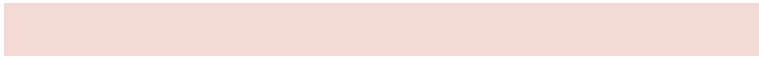
55, 92.135, 42.736

53, 97.011, 42.741

# Harmonies

# Complementary

The Complementary color scheme is a pair of colors which are on the opposite of each other on the color wheel.



89, 10.134, 37.829



92, 9.308, 218.453

# Rectangle

The Rectangle color scheme consists of four colors that form a rectangle on the color wheel.



89, 10.134, 37.829



89, 10.134, 87.829



89, 10.134, 217.829



89, 10.134, 267.829

# Sweetspot

The Sweet Spot groups the original color and five complimentary colors.



89, 10.133, 37.844



98, 3.084, 37.781



88, 17.791, 330.748



52, 2.199, 37.805



0, 0.000, 0.000



53, 0.007, 296.813

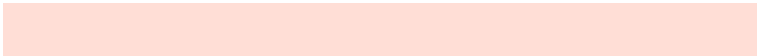


# Same Dimension

The Same Dimension uses a secret algorithm to generate beautiful new colors.



89, 10.133, 37.844



91, 12.971, 37.847



93, 11.836, 90.777



48, 4.337, 37.843



41, 78.748, 43.121



10, 27.654, 35.110





# Inverse Universe

The Inverse Universe completely reimagines the original color for something new.



92, 9.308, 218.453



95, 11.672, 218.549



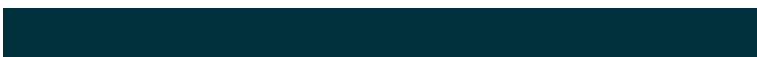
88, 11.843, 274.218



50, 4.084, 218.362



58, 34.509, 232.887

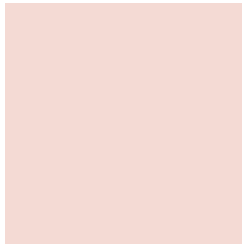


17, 15.281, 227.463



# Previews

## White Background



This preview shows how the CIELCh color 89, 10.134, 37.829 looks on a white background.

## Color Contrast Check

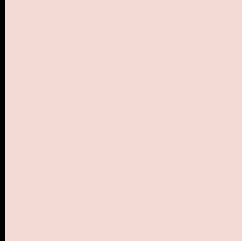
Large Text (above 18pt) WCAG AA × Fail

Any Text WCAG AA × Fail

Large Text (above 18pt) WCAG AAA × Fail

Any Text WCAG AAA × Fail

# Black Background



This preview shows how the CIE LCh color 89, 10.134, 37.829 looks on a black background.

## Color Contrast Check

Large Text (above 18pt) WCAG AA ✓ Pass

Any Text WCAG AA ✓ Pass

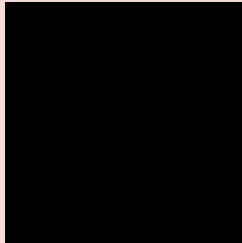
Large Text (above 18pt) WCAG AAA ✓ Pass

Any Text WCAG AAA ✓ Pass

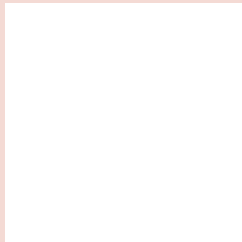
If you want to check with other color combinations, try the [Color Contrast Checker](#).

# CIELCh 89, 10.134, 37.829

## Background



This preview shows how black text looks on a background with the CIELCh color 89, 10.134, 37.829.

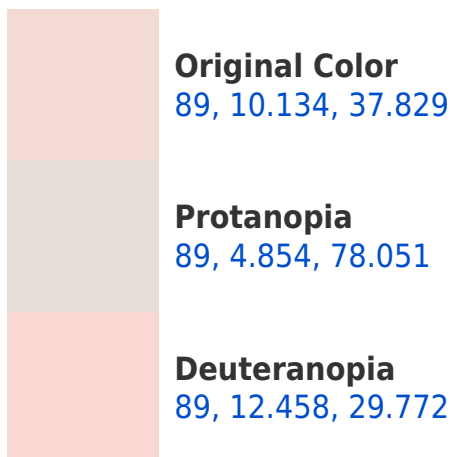


This preview shows how white text looks on a background with the CIELCh color 89, 10.134, 37.829.

# Color Blindness Simulation

Color vision deficiency is a very complex topic, and I could not describe the different causes any better than Wikipedia does, so if you want to learn more, you should check out their [article about color blindness](#).

## Dichromacy





**Tritanopia**  
89, 14.529, 343.051



# Trichromacy



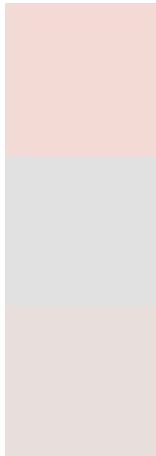
**Original Color**  
89, 10.134, 37.829

**Protanomaly**  
89, 6.280, 54.903

**Deuteranomaly**  
89, 11.451, 33.168

**Tritanomaly**  
89, 11.869, 357.106

# Monochromacy



**Original Color**  
89, 10.134, 37.829

**Achromatopsia**  
90, 0.011, 296.813

**Achromatomaly**  
89, 3.762, 35.497

# CSS Examples

## Text

The CSS property to change the color of the text to CIELCh 89, 10.134, 37.829 is called "color". The color property can be set on classes, ids or directly on the HTML element.

This example shows how text in the color `rgb(244, 218, 212)` looks like.

```
.text, #text, p{  
    color:rgb(244, 218, 212)  
}
```

If you want to add a text shadow in that color use the text-shadow property, you can generate a text shadow directly with our [CSS Text Shadow Generator](#).

Here you see how black text with a 4 pixel rgb(244, 218, 212) colored shadow looks like.

```
.shadow{ text-shadow: 4px 4px 2px rgb(244, 218, 212) }
```

## Border

The CSS property to change the border of an element to CIELCh 89, 10.134, 37.829 is called "border". The border property can be set on classes, ids or directly on the HTML element.

This example shows the color as border, it can be applied via the CSS property "border" or "border-color".

```
.border, #border, table{ border:4px solid rgb(244, 218, 212) }
```

If only the border color should be changed use the property `border-color`.

```
.border{ border-color:rgb(244, 218, 212) }
```

If you want to add a box shadow in that color use:

Here you see how a box with a 4 pixel `rgb(244, 218, 212)` colored shadow looks like.

```
.boxshadow{ -moz-box-shadow:4px 4px 4px 4px rgb(244, 218, 212); -webkit-box-shadow:4px 4px 4px 4px rgb(244, 218, 212); box-shadow:4px 4px 4px 4px rgb(244, 218, 212) }
```

# Background

The CSS property to change the background color of an element to CIELCh 89, 10.134, 37.829 is called "background". The background property can be set on classes, ids or directly on the HTML element.

```
.background, #background, body{  
background: rgb(244, 218, 212) }
```

If only the background color should be changed can be used:

```
.background{ background-color: rgb(244,  
218, 212) }
```

This example shows the color as background, it is applied via the CSS property "background".

To optimize and compress your CSS code, you can use our [online CSS compressor and optimizer](#) based on csstidy. If you want to create a linear or radial gradient as background or border, check our [CSS Gradient Generator](#).

Hey! You found this booklet interesting? Support Converting Colors with the new Membership Option!

The pro membership hides all ads, plus gives you double the colors in the color bucket, and more awesome pro features!

**[Learn more, Memberships starting at \\$2.50/m!](#)**

**Follow me  
on Twitter!**

@ConvertingColor