

Converting Colors

CIELCh(89, 4.712, 18.962)

Have a look what the booklet for
CIELCh(89, 4.712, 18.962) contains.

CIELCh(89, 4.713, 19.615)	3
<i>Conversions</i>	4
<i>Details</i>	6
<i>Harmonies</i>	11
<i>Previews</i>	20
<i>Color Blindness Simulation</i>	23
<i>CSS Examples</i>	26

Color

CIELCh(89, 4.713, 19.615)

Conversions

Conversions Part 1

Format	Color
Hex	EADDDD
RGB	234, 221, 221
RGB Percent	92%, 87%, 87%
CMY	0.0837, 0.1347, 0.1347
CMYK	0.00, 0.06, 0.06, 0.08
HSL	0°, 23%, 89%
HSV	0°, 6%, 92%
XYZ	72.5856, 74.1641, 78.6534
YIQ	224.8870, 7.7480, 2.7560

Conversions

Conversions Part 2

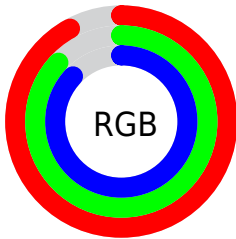
Format	Color
R _Y B	234, 221, 221
Decimal	15392221
CIE Lab	89.00, 4.44, 1.58
CIE LCh	89, 4.713, 19.615
Yxy	74.1641, 0.3220, 0.3290
Android (android.graphics.Color)	4293582301 (0xFFEADDDD)
YUV	224.8870, -1.9163, 7.9921
Hunter-Lab	86.1186, -0.2578, 6.1326

Details

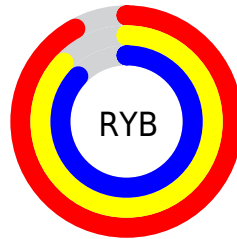
The CIELCh color **89, 4.713, 19.615** is a light color, and the websafe version is hex **CCCCCC**. A complement of this color would be **92, 4.549, 199.259**, and the grayscale version is **89, 0.011, 296.813**.

A 20% lighter version of the original color is **100, 0.012, 296.813**, and **69, 4.598, 19.707** is the 20% darker color. If you saturate the color by 10%, you get **83, 13.716, 20.462**, and if you desaturate by 10%, it is **95, 3.611, 199.371**.

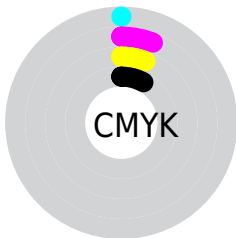
Distribution



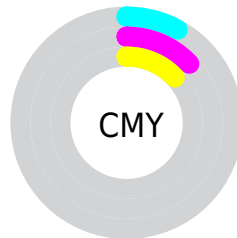
- Red (92%)
- Green (87%)
- Blue (87%)



- Red (92%)
- Yellow (87%)
- Blue (87%)



- Cyan (0%)
- Magenta (6%)
- Yellow (6%)
- Black (8%)



- Cyan (8%)
- Magenta (13%)
- Yellow (13%)

Brightness & Saturation Gradients

These gradients show how the CIELCh color 89, 4.713, 19.615 changes by changing the brightness by 10 percent. The first figure shows a shift by +10% for each color and the second figure -10%.

Similar to the brightness gradients but the following saturation gradients show a change of the CIELCh color 89, 4.713, 19.615 by changing the saturation by 10% instead.

 89, 4.713, 19.615	 89, 4.713, 19.615
 100, 4.713, 19.615	 79, 4.713, 19.615
	 69, 4.713, 19.615
	 59, 4.713, 19.615
	 49, 4.713, 19.615
	 39, 4.713, 19.615
	 29, 4.713, 19.615
	 19, 4.713, 19.615
	 9, 4.713, 19.615
	 0, 4.713, 19.615

89, 4.713, 19.615

89, 4.713, 19.615

83, 13.716, 20.462

95, 3.611, 199.371

77, 23.426, 21.435

99, 7.304, 199.034

71, 33.820, 22.692

65, 44.794, 24.334

60, 56.143, 26.476

56, 67.545, 29.213

53, 78.554, 32.539

50, 88.437, 36.134

49, 95.590, 39.036

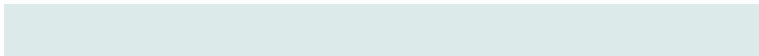
Harmonies

Complementary

The Complementary color scheme is a pair of colors which are on the opposite of each other on the color wheel.



89, 4.713, 19.615



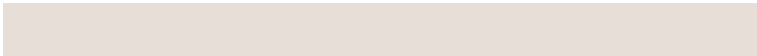
92, 4.549, 199.259

Rectangle

The Rectangle color scheme consists of four colors that form a rectangle on the color wheel.



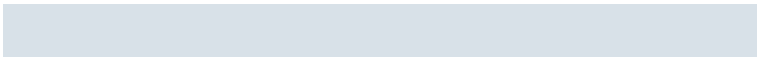
89, 4.713, 19.615



89, 4.713, 69.615



89, 4.713, 199.615



89, 4.713, 249.615

Sweetspot

The Sweet Spot groups the original color and five complimentary colors.



89, 4.711, 19.640



99, 1.794, 19.183



89, 8.234, 324.712



53, 1.020, 19.158



0, 0.000, 0.000



53, 0.007, 296.813

Same Dimension

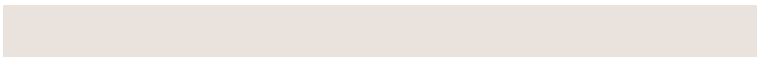
The Same Dimension uses a secret algorithm to generate beautiful new colors.



89, 4.711, 19.640



95, 6.403, 19.765



91, 4.083, 74.642



46, 3.893, 19.809



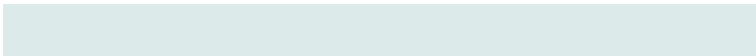
38, 80.843, 39.989



7, 28.529, 22.730

Inverse Universe

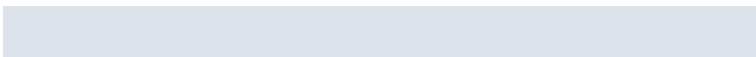
The Inverse Universe completely reimagines the original color for something new.



92, 4.549, 199.259



99, 6.125, 199.151



90, 4.042, 256.223



49, 3.712, 199.114



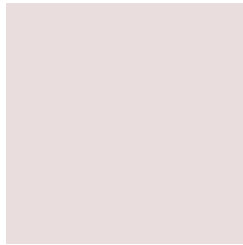
67, 38.735, 196.432



19, 16.588, 196.426

Previews

White Background



This preview shows how the CIE LCh color 89, 4.713, 19.615 looks on a white background.

Color Contrast Check

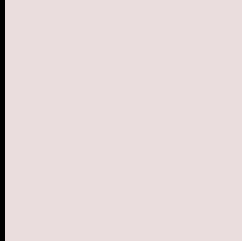
Large Text (above 18pt) WCAG AA × Fail

Any Text WCAG AA × Fail

Large Text (above 18pt) WCAG AAA × Fail

Any Text WCAG AAA × Fail

Black Background



This preview shows how the CIELCh color 89, 4.713, 19.615 looks on a black background.

Color Contrast Check

Large Text (above 18pt) WCAG AA ✓ Pass

Any Text WCAG AA ✓ Pass

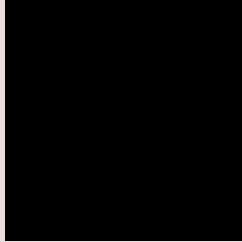
Large Text (above 18pt) WCAG AAA ✓ Pass

Any Text WCAG AAA ✓ Pass

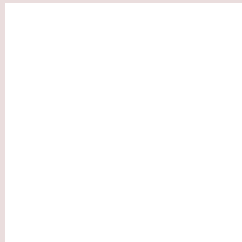
If you want to check with other color combinations, try the [Color Contrast Checker](#).

CIELCh 89, 4.713, 19.615

Background



This preview shows how black text looks on a background with the CIELCh color 89, 4.713, 19.615.

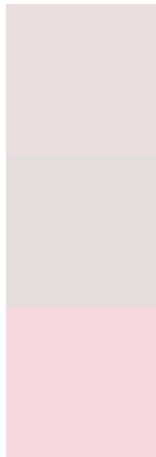


This preview shows how white text looks on a background with the CIELCh color 89, 4.713, 19.615.

Color Blindness Simulation

Color vision deficiency is a very complex topic, and I could not describe the different causes any better than Wikipedia does, so if you want to learn more, you should check out their [article about color blindness](#).

Dichromacy



Original Color
89, 4.713, 19.615

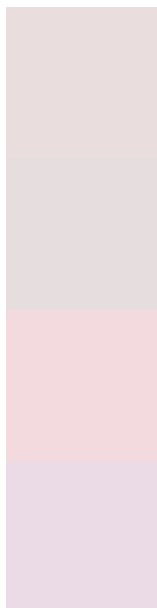
Protanopia
89, 2.161, 19.283

Deuteranopia
89, 11.391, 4.377



Tritanopia
89, 11.398, 324.836

Trichromacy



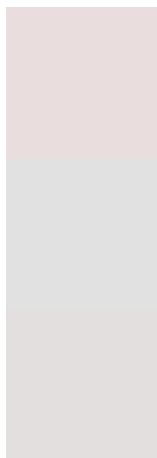
Original Color
89, 4.713, 19.615

Protanomaly
89, 2.886, 19.404

Deuteranomaly
89, 8.990, 6.677

Tritanomaly
89, 8.136, 335.218

Monochromacy



Original Color
89, 4.713, 19.615

Achromatopsia
90, 0.011, 296.813

Achromatomaly
89, 1.798, 19.200

CSS Examples

Text

The CSS property to change the color of the text to CIELCh 89, 4.713, 19.615 is called "color". The color property can be set on classes, ids or directly on the HTML element.

This example shows how text in the color `rgb(234, 221, 221)` looks like.

```
.text, #text, p{  
    color:rgb(234, 221, 221)  
}
```

If you want to add a text shadow in that color use the text-shadow property, you can generate a text shadow directly with our [CSS Text Shadow Generator](#).

Here you see how black text with a 4 pixel rgb(234, 221, 221) colored shadow looks like.

```
.shadow{ text-shadow: 4px 4px 2px rgb(234, 221, 221) }
```

Border

The CSS property to change the border of an element to CIELCh 89, 4.713, 19.615 is called "border". The border property can be set on classes, ids or directly on the HTML element.

This example shows the color as border, it can be applied via the CSS property "border" or "border-color".

```
.border, #border, table{ border:4px solid rgb(234, 221, 221) }
```

If only the border color should be changed use the property border-color.

```
.border{ border-color:rgb(234, 221, 221) }
```

If you want to add a box shadow in that color use:

Here you see how a box with a 4 pixel rgb(234, 221, 221) colored shadow looks like.

```
.boxshadow{ -moz-box-shadow:4px 4px 4px  
4px rgb(234, 221, 221); -webkit-box-  
shadow:4px 4px 4px 4px rgb(234, 221, 221);  
box-shadow:4px 4px 4px 4px rgb(234, 221,  
221) }
```

Background

The CSS property to change the background color of an element to CIELCh 89, 4.713, 19.615 is called "background". The background property can be set on classes, ids or directly on the HTML element.

```
.background, #background, body{  
background: rgb(234, 221, 221) }
```

If only the background color should be changed can be used:

```
.background{ background-color: rgb(234,  
221, 221) }
```

This example shows the color as background, it is applied via the CSS property "background".

To optimize and compress your CSS code, you can use our [online CSS compressor and optimizer](#) based on csstidy. If you want to create a linear or radial gradient as background or border, check our [CSS Gradient Generator](#).

Hey! You found this booklet interesting? Support Converting Colors with the new Membership Option!

The pro membership hides all ads, plus gives you double the colors in the color bucket, and more awesome pro features!

[Learn more, Memberships starting at \\$2.50/m!](#)

**Follow me
on Twitter!**

@ConvertingColor