

Converting Colors

CIELCh(89, 4.976, 37.100)

Have a look what the booklet for
CIELCh(89, 4.976, 37.100) contains.

CIELCh(89, 4.976, 37.819)	3
<i>Conversions</i>	4
<i>Details</i>	6
<i>Harmonies</i>	11
<i>Previews</i>	20
<i>Color Blindness Simulation</i>	23
<i>CSS Examples</i>	26

Color

CIELCh(89, 4.976, 37.819)

Conversions

Conversions Part 1

Format	Color
Hex	EADDDA
RGB	234, 221, 218
RGB Percent	92%, 87%, 85%
CMY	0.0829, 0.1339, 0.1456
CMYK	0.00, 0.06, 0.07, 0.08
HSL	11°, 27%, 89%
HSV	11°, 7%, 92%
XYZ	72.3435, 74.1641, 76.7376
YIQ	224.5450, 8.7110, 1.8230

Conversions

Conversions Part 2

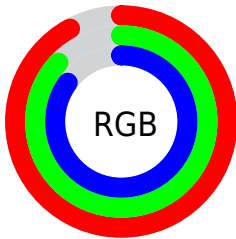
Format	Color
RYB	234, 222, 218
Decimal	15392218
CIELab	89.00, 3.93, 3.05
CIELCh	89, 4.976, 37.819
Yxy	74.1641, 0.3241, 0.3322
Android (android.graphics.Color)	4293582298 (0xFFEADDDA)
YUV	224.5450, -3.2267, 8.2920
Hunter-Lab	86.1186, -0.7596, 7.4515

Details

The CIELCh color $89, 4.976, 37.819$ is a light color, and the websafe version is hex `CCCCCC`. A complement of this color would be $91, 4.769, 218.338$, and the grayscale version is $89, 0.011, 296.813$.

A 20% lighter version of the original color is $100, 0.012, 296.813$, and $69, 4.903, 39.217$ is the 20% darker color. If you saturate the color by 10%, you get $84, 12.767, 37.861$, and if you desaturate by 10%, it is $94, 2.210, 218.407$.

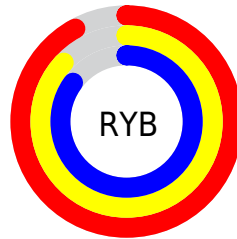
Distribution



Red (92%)

Green (87%)

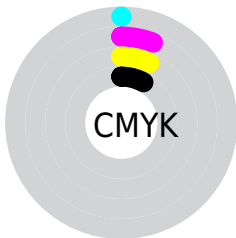
Blue (85%)



Red (92%)

Yellow (87%)

Blue (85%)

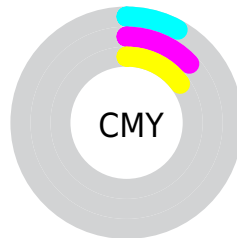


Cyan (0%)

Magenta (6%)

Yellow (7%)

Black (8%)



Cyan (8%)

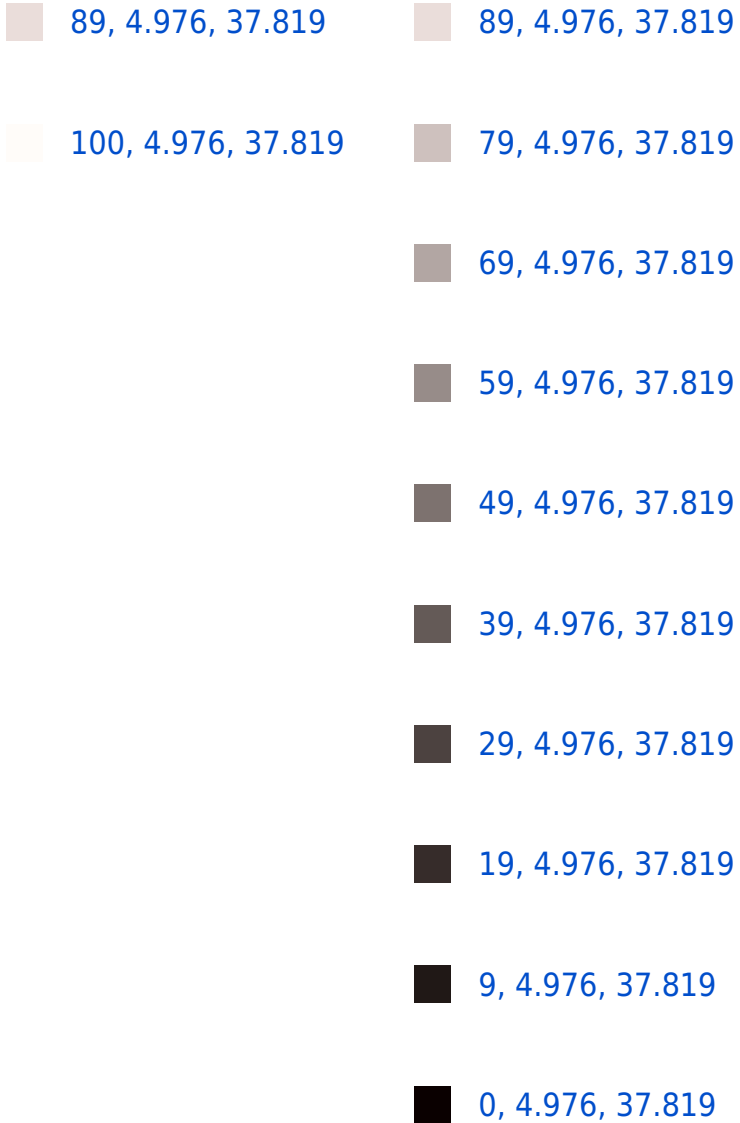
Magenta (13%)

Yellow (15%)

Brightness & Saturation Gradients

These gradients show how the CIELCh color 89, 4.976, 37.819 changes by changing the brightness by 10 percent. The first figure shows a shift by +10% for each color and the second figure -10%.

Similar to the brightness gradients but the following saturation gradients show a change of the CIELCh color 89, 4.976, 37.819 by changing the saturation by 10% instead.



89, 4.976, 37.819

89, 4.976, 37.819

84, 12.767, 37.861

94, 2.210, 218.407

79, 21.223, 37.947

99, 7.232, 199.039

74, 30.381, 38.188

69, 40.248, 38.633

64, 50.772, 39.320

60, 61.799, 40.261

57, 72.972, 41.386

54, 83.489, 42.419

52, 91.698, 42.711

Harmonies

Complementary

The Complementary color scheme is a pair of colors which are on the opposite of each other on the color wheel.



89, 4.976, 37.819



91, 4.769, 218.338

Rectangle

The Rectangle color scheme consists of four colors that form a rectangle on the color wheel.



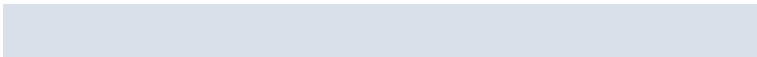
89, 4.976, 37.819



89, 4.976, 87.819



89, 4.976, 217.819



89, 4.976, 267.819

Sweetspot

The Sweet Spot groups the original color and five complimentary colors.



89, 4.975, 37.848



99, 1.528, 37.608



89, 8.932, 330.334



53, 0.869, 37.587



0, 0.000, 0.000



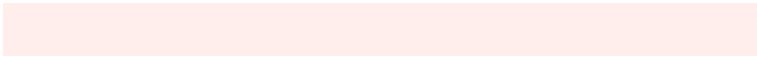
53, 0.007, 296.813

Same Dimension

The Same Dimension uses a secret algorithm to generate beautiful new colors.



89, 4.975, 37.848



95, 6.272, 37.853



91, 5.924, 91.550



46, 4.187, 37.856



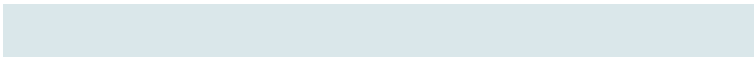
40, 77.086, 43.171



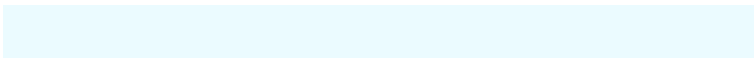
9, 25.106, 33.448

Inverse Universe

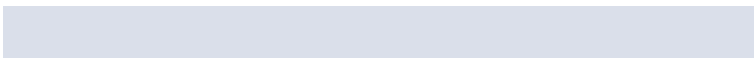
The Inverse Universe completely reimagines the original color for something new.



91, 4.769, 218.338



98, 5.965, 218.351



89, 5.940, 273.350



48, 3.944, 218.375



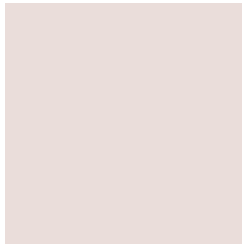
56, 33.801, 232.831



16, 14.418, 226.845

Previews

White Background



This preview shows how the CIELCh color 89, 4.976, 37.819 looks on a white background.

Color Contrast Check

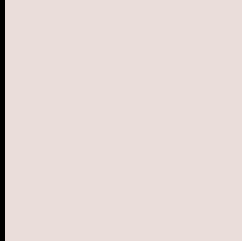
Large Text (above 18pt) WCAG AA × Fail

Any Text WCAG AA × Fail

Large Text (above 18pt) WCAG AAA × Fail

Any Text WCAG AAA × Fail

Black Background



This preview shows how the CIE LCh color 89, 4.976, 37.819 looks on a black background.

Color Contrast Check

Large Text (above 18pt) WCAG AA ✓ Pass

Any Text WCAG AA ✓ Pass

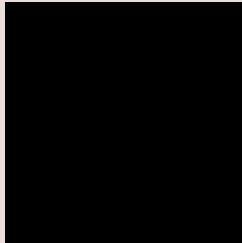
Large Text (above 18pt) WCAG AAA ✓ Pass

Any Text WCAG AAA ✓ Pass

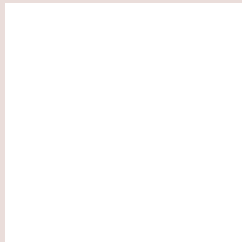
If you want to check with other color combinations, try the [Color Contrast Checker](#).

CIELCh 89, 4.976, 37.819

Background



This preview shows how black text looks on a background with the CIELCh color 89, 4.976, 37.819.

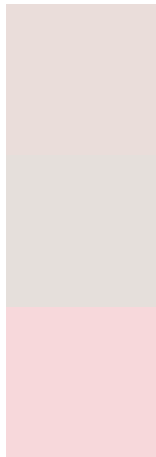


This preview shows how white text looks on a background with the CIELCh color 89, 4.976, 37.819.

Color Blindness Simulation

Color vision deficiency is a very complex topic, and I could not describe the different causes any better than Wikipedia does, so if you want to learn more, you should check out their [article about color blindness](#).

Dichromacy



Original Color

89, 4.976, 37.819

Protanopia

89, 2.987, 63.287

Deuteranopia

89, 11.488, 12.443



Tritanopia
89, 10.975, 326.368

Trichromacy



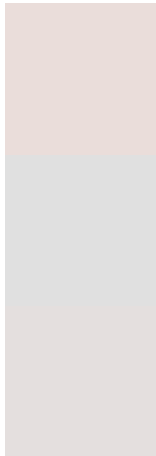
Original Color
89, 4.976, 37.819

Protanomaly
89, 3.604, 45.027

Deuteranomaly
89, 8.799, 16.607

Tritanomaly
89, 7.780, 337.933

Monochromacy



Original Color
89, 4.976, 37.819

Achromatopsia
89, 0.011, 296.813

Achromatomaly
89, 1.867, 35.346

CSS Examples

Text

The CSS property to change the color of the text to CIELCh 89, 4.976, 37.819 is called "color". The color property can be set on classes, ids or directly on the HTML element.

This example shows how text in the color `rgb(234, 221, 218)` looks like.

```
.text, #text, p{  
    color:rgb(234, 221, 218)  
}
```

If you want to add a text shadow in that color use the text-shadow property, you can generate a text shadow directly with our [CSS Text Shadow Generator](#).

Here you see how black text with a 4 pixel rgb(234, 221, 218) colored shadow looks like.

```
.shadow{ text-shadow: 4px 4px 2px rgb(234, 221, 218) }
```

Border

The CSS property to change the border of an element to CIELCh 89, 4.976, 37.819 is called "border". The border property can be set on classes, ids or directly on the HTML element.

This example shows the color as border, it can be applied via the CSS property "border" or "border-color".

```
.border, #border, table{ border:4px solid rgb(234, 221, 218) }
```

If only the border color should be changed use the property `border-color`.

```
.border{ border-color:rgb(234, 221, 218) }
```

If you want to add a box shadow in that color use:

Here you see how a box with a 4 pixel `rgb(234, 221, 218)` colored shadow looks like.

```
.boxshadow{ -moz-box-shadow:4px 4px 4px  
4px rgb(234, 221, 218); -webkit-box-  
shadow:4px 4px 4px 4px rgb(234, 221, 218);  
box-shadow:4px 4px 4px 4px rgb(234, 221,  
218) }
```

Background

The CSS property to change the background color of an element to CIELCh 89, 4.976, 37.819 is called "background". The background property can be set on classes, ids or directly on the HTML element.

```
.background, #background, body{  
background: rgb(234, 221, 218) }
```

If only the background color should be changed can be used:

```
.background{ background-color: rgb(234,  
221, 218) }
```

This example shows the color as background, it is applied via the CSS property "background".

To optimize and compress your CSS code, you can use our [online CSS compressor and optimizer](#) based on csstidy. If you want to create a linear or radial gradient as background or border, check our [CSS Gradient Generator](#).

Hey! You found this booklet interesting? Support Converting Colors with the new Membership Option!

The pro membership hides all ads, plus gives you double the colors in the color bucket, and more awesome pro features!

[Learn more, Memberships starting at \\$2.50/m!](#)

**Follow me
on Twitter!**

@ConvertingColor