

Converting Colors

CIELCh(89, 5.341, 19.674)

Have a look what the booklet for
CIELCh(89, 5.341, 19.674) contains.

CIELCh(89, 5.452, 19.687)	3
<i>Conversions</i>	4
<i>Details</i>	6
<i>Harmonies</i>	11
<i>Previews</i>	20
<i>Color Blindness Simulation</i>	23
<i>CSS Examples</i>	26

Color

CIELCh(89, 5.452, 19.687)

Conversions

Conversions Part 1

Format	Color
Hex	EBDCDC
RGB	235, 220, 220
RGB Percent	92%, 86%, 86%
CMY	0.0776, 0.1365, 0.1365
CMYK	0.00, 0.06, 0.06, 0.08
HSL	0°, 27%, 89%
HSV	0°, 6%, 92%
XYZ	72.9166, 74.1641, 78.3192
YIQ	224.4850, 8.9400, 3.1800

Conversions

Conversions Part 2

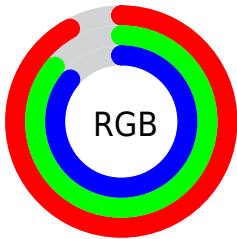
Format	Color
R _Y B	235, 220, 220
Decimal	15457500
CIE Lab	89.00, 5.13, 1.84
CIE LCh	89, 5.452, 19.687
Yxy	74.1641, 0.3235, 0.3290
Android (android.graphics.Color)	4293647580 (0xFFEBDCDC)
YUV	224.4850, -2.2111, 9.2217
Hunter-Lab	86.1186, 0.4285, 6.3627

Details

The CIELCh color **89, 5.452, 19.687** is a light color, and the websafe version is hex **CCCCCC**. A complement of this color would be **92, 5.236, 199.195**, and the grayscale version is **89, 0.011, 296.813**.

A 20% lighter version of the original color is **100, 0.012, 296.813**, and **69, 5.382, 19.794** is the 20% darker color. If you saturate the color by 10%, you get **83, 14.561, 20.532**, and if you desaturate by 10%, it is **95, 2.972, 199.449**.

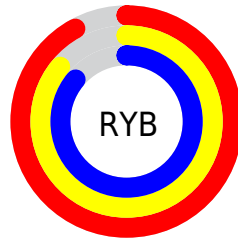
Distribution



Red (92%)

Green (86%)

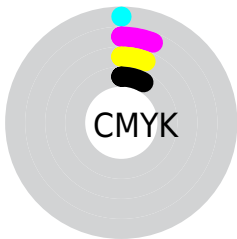
Blue (86%)



Red (92%)

Yellow (86%)

Blue (86%)

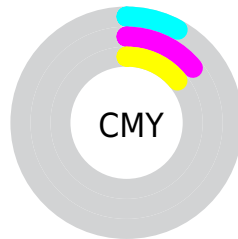


Cyan (0%)

Magenta (6%)

Yellow (6%)

Black (8%)



Cyan (8%)

Magenta (14%)

Yellow (14%)

Brightness & Saturation Gradients

These gradients show how the CIELCh color 89, 5.452, 19.687 changes by changing the brightness by 10 percent. The first figure shows a shift by +10% for each color and the second figure -10%.

Similar to the brightness gradients but the following saturation gradients show a change of the CIELCh color 89, 5.452, 19.687 by changing the saturation by 10% instead.

89, 5.452, 19.687

89, 5.452, 19.687

100, 5.452, 19.687

79, 5.452, 19.687

69, 5.452, 19.687

59, 5.452, 19.687

49, 5.452, 19.687

39, 5.452, 19.687

29, 5.452, 19.687

19, 5.452, 19.687

9, 5.452, 19.687

0, 5.452, 19.687

89, 5.452, 19.687

89, 5.452, 19.687

83, 14.561, 20.532

95, 2.972, 199.449

76, 24.383, 21.525

99, 6.783, 199.074

71, 34.886, 22.810

65, 45.961, 24.491

60, 57.389, 26.680

56, 68.839, 29.471

53, 79.847, 32.840

50, 89.631, 36.427

49, 96.486, 39.210

Harmonies

Complementary

The Complementary color scheme is a pair of colors which are on the opposite of each other on the color wheel.



89, 5.452, 19.687



92, 5.236, 199.195

Rectangle

The Rectangle color scheme consists of four colors that form a rectangle on the color wheel.



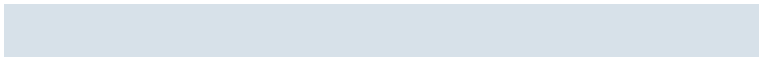
89, 5.452, 19.687



89, 5.452, 69.687



89, 5.452, 199.687



89, 5.452, 249.687

Sweetspot

The Sweet Spot groups the original color and five complimentary colors.



89, 5.450, 19.709



99, 1.794, 19.181



89, 9.499, 324.762



53, 1.020, 19.156



0, 0.000, 0.000



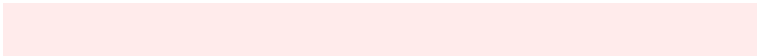
53, 0.007, 296.813

Same Dimension

The Same Dimension uses a secret algorithm to generate beautiful new colors.



89, 5.450, 19.709



94, 7.347, 19.845



91, 4.718, 74.555



46, 4.903, 19.959



38, 80.843, 39.989



7, 28.530, 22.729

Inverse Universe

The Inverse Universe completely reimagines the original color for something new.



92, 5.236, 199.195



99, 6.983, 199.082



90, 4.658, 256.320



48, 4.618, 198.992



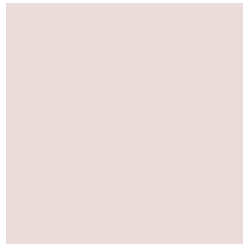
67, 38.737, 196.429



19, 16.589, 196.422

Previews

White Background



This preview shows how the CIELCh color 89, 5.452, 19.687 looks on a white background.

Color Contrast Check

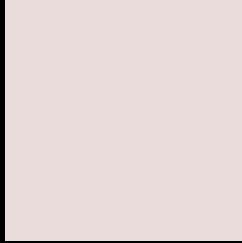
Large Text (above 18pt) WCAG AA × Fail

Any Text WCAG AA × Fail

Large Text (above 18pt) WCAG AAA × Fail

Any Text WCAG AAA × Fail

Black Background



This preview shows how the CIE LCh color 89, 5.452, 19.687 looks on a black background.

Color Contrast Check

Large Text (above 18pt) WCAG AA ✓ Pass

Any Text WCAG AA ✓ Pass

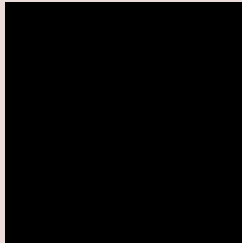
Large Text (above 18pt) WCAG AAA ✓ Pass

Any Text WCAG AAA ✓ Pass

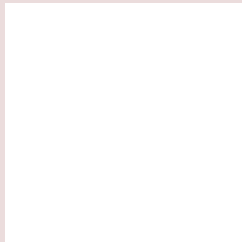
If you want to check with other color combinations, try the [Color Contrast Checker](#).

CIELCh 89, 5.452, 19.687

Background



This preview shows how black text looks on a background with the CIELCh color 89, 5.452, 19.687.



This preview shows how white text looks on a background with the CIELCh color 89, 5.452, 19.687.

Color Blindness Simulation

Color vision deficiency is a very complex topic, and I could not describe the different causes any better than Wikipedia does, so if you want to learn more, you should check out their [article about color blindness](#).

Dichromacy





Tritanopia
89, 11.186, 327.870

Trichromacy



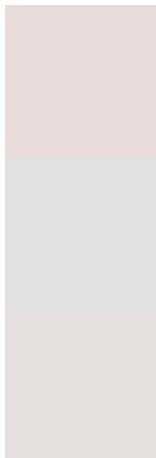
Original Color
89, 5.452, 19.687

Protanomaly
89, 3.291, 28.521

Deuteranomaly
89, 8.896, 9.935

Tritanomaly
89, 8.394, 336.979

Monochromacy



Original Color
89, 5.452, 19.687

Achromatopsia
90, 0.011, 296.813

Achromatomaly
89, 2.160, 19.281

CSS Examples

Text

The CSS property to change the color of the text to CIELCh 89, 5.452, 19.687 is called "color". The color property can be set on classes, ids or directly on the HTML element.

This example shows how text in the color `rgb(235, 220, 220)` looks like.

```
.text, #text, p{  
    color:rgb(235, 220, 220)  
}
```

If you want to add a text shadow in that color use the text-shadow property, you can generate a text shadow directly with our [CSS Text Shadow Generator](#).

Here you see how black text with a 4 pixel rgb(235, 220, 220) colored shadow looks like.

```
.shadow{ text-shadow: 4px 4px 2px rgb(235, 220, 220) }
```

Border

The CSS property to change the border of an element to CIELCh 89, 5.452, 19.687 is called "border". The border property can be set on classes, ids or directly on the HTML element.

This example shows the color as border, it can be applied via the CSS property "border" or "border-color".

```
.border, #border, table{ border:4px solid rgb(235, 220, 220) }
```

If only the border color should be changed use the property `border-color`.

```
.border{ border-color:rgb(235, 220, 220) }
```

If you want to add a box shadow in that color use:

Here you see how a box with a 4 pixel `rgb(235, 220, 220)` colored shadow looks like.

```
.boxshadow{ -moz-box-shadow:4px 4px 4px  
4px rgb(235, 220, 220); -webkit-box-  
shadow:4px 4px 4px 4px rgb(235, 220, 220);  
box-shadow:4px 4px 4px 4px rgb(235, 220,  
220) }
```

Background

The CSS property to change the background color of an element to CIELCh 89, 5.452, 19.687 is called "background". The background property can be set on classes, ids or directly on the HTML element.

```
.background, #background, body{  
background: rgb(235, 220, 220) }
```

If only the background color should be changed can be used:

```
.background{ background-color: rgb(235,  
220, 220) }
```

This example shows the color as background, it is applied via the CSS property "background".

To optimize and compress your CSS code, you can use our [online CSS compressor and optimizer](#) based on csstidy. If you want to create a linear or radial gradient as background or border, check our [CSS Gradient Generator](#).

Hey! You found this booklet interesting? Support Converting Colors with the new Membership Option!

The pro membership hides all ads, plus gives you double the colors in the color bucket, and more awesome pro features!

[Learn more, Memberships starting at \\$2.50/m!](#)

**Follow me
on Twitter!**

@ConvertingColor