

Converting Colors

CIELCh(89, 6.156, 20.879)

Have a look what the booklet for
CIELCh(89, 6.156, 20.879) contains.

CIELCh(89, 6.188, 19.753)	3
<i>Conversions</i>	4
<i>Details</i>	6
<i>Harmonies</i>	11
<i>Previews</i>	20
<i>Color Blindness Simulation</i>	23
<i>CSS Examples</i>	26

Color

CIELCh(89, 6.188, 19.753)

Conversions

Conversions Part 1

Format	Color
Hex	EDDCDC
RGB	237, 220, 220
RGB Percent	93%, 86%, 86%
CMY	0.0716, 0.1382, 0.1383
CMYK	0.00, 0.07, 0.07, 0.07
HSL	0°, 32%, 90%
HSV	0°, 7%, 93%
XYZ	73.2472, 74.1641, 77.9858
YIQ	225.0830, 10.1320, 3.6040

Conversions

Conversions Part 2

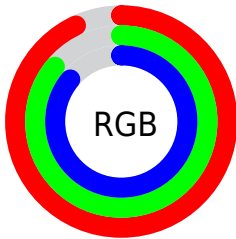
Format	Color
R _Y B	237, 220, 220
Decimal	15588572
CIE Lab	89.00, 5.82, 2.09
CIE LCh	89, 6.188, 19.753
Yxy	74.1641, 0.3250, 0.3290
Android (android.graphics.Color)	4293778652 (0xFFEDDCDC)
YUV	225.0830, -2.5059, 10.4512
Hunter-Lab	86.1186, 1.1136, 6.5922

Details

The CIELCh color **89, 6.188, 19.753** is a light color, and the websafe version is hex **CCCCCC**. A complement of this color would be **92, 5.913, 199.135**, and the grayscale version is **89, 0.011, 296.813**.

A 20% lighter version of the original color is **100, 0.012, 296.813**, and **69, 6.163, 19.875** is the 20% darker color. If you saturate the color by 10%, you get **83, 15.403, 20.601**, and if you desaturate by 10%, it is **95, 2.335, 199.546**.

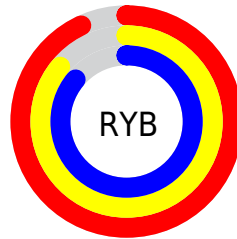
Distribution



Red (93%)

Green (86%)

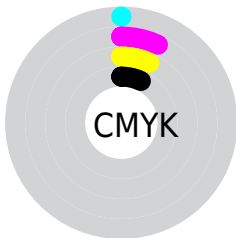
Blue (86%)



Red (93%)

Yellow (86%)

Blue (86%)

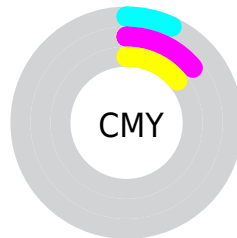


Cyan (0%)

Magenta (7%)

Yellow (7%)

Black (7%)



Cyan (7%)

Magenta (14%)

Yellow (14%)

Brightness & Saturation Gradients

These gradients show how the CIELCh color 89, 6.188, 19.753 changes by changing the brightness by 10 percent. The first figure shows a shift by +10% for each color and the second figure -10%.

Similar to the brightness gradients but the following saturation gradients show a change of the CIELCh color 89, 6.188, 19.753 by changing the saturation by 10% instead.

89, 6.188, 19.753

89, 6.188, 19.753

100, 6.188, 19.753

79, 6.188, 19.753

69, 6.188, 19.753

59, 6.188, 19.753

49, 6.188, 19.753

39, 6.188, 19.753

29, 6.188, 19.753

19, 6.188, 19.753

9, 6.188, 19.753

0, 6.188, 19.753

89, 6.188, 19.753

89, 6.188, 19.753

83, 15.403, 20.601

95, 2.335, 199.546

76, 25.335, 21.614

99, 6.266, 199.114

71, 35.946, 22.928

65, 47.118, 24.647

60, 58.623, 26.884

56, 70.117, 29.727

53, 81.118, 33.137

51, 90.793, 36.708

50, 97.375, 39.382

Harmonies

Complementary

The Complementary color scheme is a pair of colors which are on the opposite of each other on the color wheel.



89, 6.188, 19.753



92, 5.913, 199.135

Rectangle

The Rectangle color scheme consists of four colors that form a rectangle on the color wheel.



89, 6.188, 19.753



89, 6.188, 69.753



89, 6.188, 199.753



89, 6.188, 249.753

Sweetspot

The Sweet Spot groups the original color and five complimentary colors.



89, 6.186, 19.773



99, 1.794, 19.178



89, 10.752, 324.810



53, 1.020, 19.153



0, 0.000, 0.000



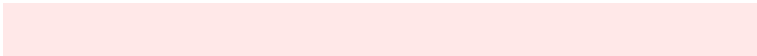
53, 0.007, 296.813

Same Dimension

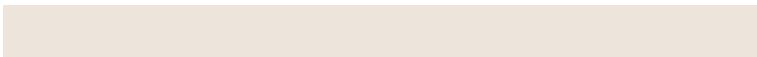
The Same Dimension uses a secret algorithm to generate beautiful new colors.



89, 6.186, 19.773



94, 8.298, 19.922



91, 5.349, 74.466



46, 4.904, 19.956



38, 80.844, 39.988



7, 28.530, 22.727

Inverse Universe

The Inverse Universe completely reimagines the original color for something new.



92, 5.913, 199.135



98, 7.837, 199.015



90, 5.268, 256.418



48, 4.618, 198.988



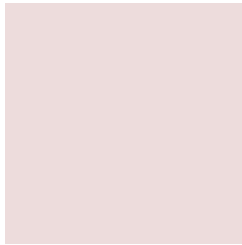
67, 38.739, 196.423



19, 16.590, 196.417

Previews

White Background



This preview shows how the CIELCh color 89, 6.188, 19.753 looks on a white background.

Color Contrast Check

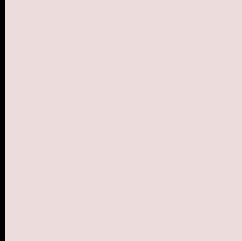
Large Text (above 18pt) WCAG AA × Fail

Any Text WCAG AA × Fail

Large Text (above 18pt) WCAG AAA × Fail

Any Text WCAG AAA × Fail

Black Background



This preview shows how the CIE LCh color 89, 6.188, 19.753 looks on a black background.

Color Contrast Check

Large Text (above 18pt) WCAG AA ✓ Pass

Any Text WCAG AA ✓ Pass

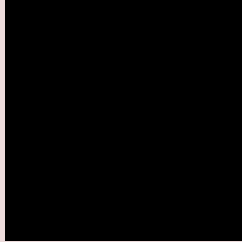
Large Text (above 18pt) WCAG AAA ✓ Pass

Any Text WCAG AAA ✓ Pass

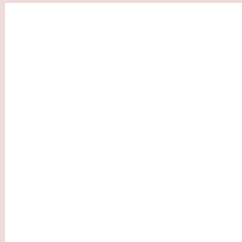
If you want to check with other color combinations, try the [Color Contrast Checker](#).

CIELCh 89, 6.188, 19.753

Background



This preview shows how black text looks on a background with the CIELCh color 89, 6.188, 19.753.

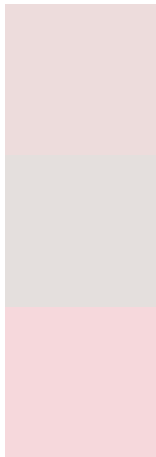


This preview shows how white text looks on a background with the CIELCh color 89, 6.188, 19.753.

Color Blindness Simulation

Color vision deficiency is a very complex topic, and I could not describe the different causes any better than Wikipedia does, so if you want to learn more, you should check out their [article about color blindness](#).

Dichromacy



Original Color

89, 6.188, 19.753

Protanopia

89, 2.068, 49.333

Deuteranopia

89, 11.185, 9.518



Tritanopia
89, 12.264, 330.440

Trichromacy



Original Color
89, 6.188, 19.753

Protanomaly
89, 3.291, 28.521

Deuteranomaly
89, 9.636, 10.777

Tritanomaly
89, 9.218, 341.675

Monochromacy



Original Color
89, 6.188, 19.753

Achromatopsia
90, 0.011, 296.813

Achromatomaly
89, 2.160, 19.281

CSS Examples

Text

The CSS property to change the color of the text to CIELCh 89, 6.188, 19.753 is called "color". The color property can be set on classes, ids or directly on the HTML element.

This example shows how text in the color `rgb(237, 220, 220)` looks like.

```
.text, #text, p{  
    color:rgb(237, 220, 220)  
}
```

If you want to add a text shadow in that color use the text-shadow property, you can generate a text shadow directly with our [CSS Text Shadow Generator](#).

Here you see how black text with a 4 pixel rgb(237, 220, 220) colored shadow looks like.

```
.shadow{ text-shadow: 4px 4px 2px rgb(237, 220, 220) }
```

Border

The CSS property to change the border of an element to CIELCh 89, 6.188, 19.753 is called "border". The border property can be set on classes, ids or directly on the HTML element.

This example shows the color as border, it can be applied via the CSS property "border" or "border-color".

```
.border, #border, table{ border:4px solid rgb(237, 220, 220) }
```

If only the border color should be changed use the property `border-color`.

```
.border{ border-color:rgb(237, 220, 220) }
```

If you want to add a box shadow in that color use:

Here you see how a box with a 4 pixel `rgb(237, 220, 220)` colored shadow looks like.

```
.boxshadow{ -moz-box-shadow:4px 4px 4px  
4px rgb(237, 220, 220); -webkit-box-  
shadow:4px 4px 4px 4px rgb(237, 220, 220);  
box-shadow:4px 4px 4px 4px rgb(237, 220,  
220) }
```

Background

The CSS property to change the background color of an element to CIELCh 89, 6.188, 19.753 is called "background". The background property can be set on classes, ids or directly on the HTML element.

```
.background, #background, body{  
background: rgb(237, 220, 220) }
```

If only the background color should be changed can be used:

```
.background{ background-color: rgb(237,  
220, 220) }
```

This example shows the color as background, it is applied via the CSS property "background".

To optimize and compress your CSS code, you can use our [online CSS compressor and optimizer](#) based on csstidy. If you want to create a linear or radial gradient as background or border, check our [CSS Gradient Generator](#).

Hey! You found this booklet interesting? Support Converting Colors with the new Membership Option!

The pro membership hides all ads, plus gives you double the colors in the color bucket, and more awesome pro features!

[Learn more, Memberships starting at \\$2.50/m!](#)

**Follow me
on Twitter!**

@ConvertingColor