

Converting Colors

CIELCh(89, 6.567, 2.655)

Have a look what the booklet for
CIELCh(89, 6.567, 2.655) contains.

CIELCh(89, 6.857, 2.202)	3
<i>Conversions</i>	4
<i>Details</i>	6
<i>Harmonies</i>	11
<i>Previews</i>	20
<i>Color Blindness Simulation</i>	23
<i>CSS Examples</i>	26

Color

CIELCh(89, 6.857, 2.202)

Conversions

Conversions Part 1

Format	Color
Hex	EDDBDF
RGB	237, 219, 223
RGB Percent	93%, 86%, 87%
CMY	0.0697, 0.1403, 0.1246
CMYK	0.00, 0.08, 0.06, 0.07
HSL	347°, 34%, 90%
HSV	347°, 8%, 93%
XYZ	73.7411, 74.1641, 80.4001
YIQ	224.8380, 9.4440, 5.0600

Conversions

Conversions Part 2

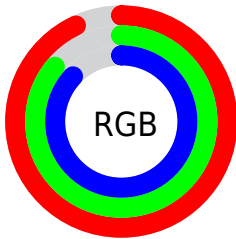
Format	Color
R _Y B	237, 219, 223
Decimal	15588319
CIE Lab	89.00, 6.85, 0.26
CIE LCh	89, 6.857, 2.202
Yxy	74.1641, 0.3230, 0.3248
Android (android.graphics.Color)	4293778399 (0xFFEDDBDF)
YUV	224.8380, -0.9061, 10.6661
Hunter-Lab	86.1186, 2.1373, 4.9300

Details

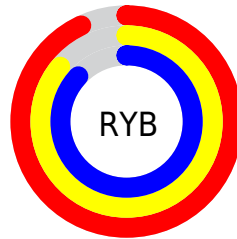
The CIELCh color **89, 6.857, 2.202** is a light color, and the websafe version is hex **CCCCCC**. A complement of this color would be **92, 6.662, 180.983**, and the grayscale version is **90, 0.011, 296.813**.

A 20% lighter version of the original color is **100, 0.012, 296.813**, and **69, 6.875, 1.414** is the 20% darker color. If you saturate the color by 10%, you get **83, 16.286, 3.337**, and if you desaturate by 10%, it is **95, 2.117, 181.647**.

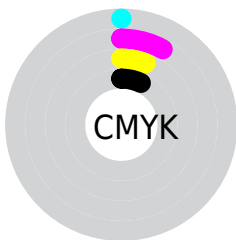
Distribution



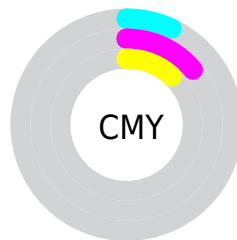
- Red (93%)
- Green (86%)
- Blue (87%)



- Red (93%)
- Yellow (86%)
- Blue (87%)



- Cyan (0%)
- Magenta (8%)
- Yellow (6%)
- Black (7%)



- Cyan (7%)
- Magenta (14%)
- Yellow (12%)

Brightness & Saturation Gradients

These gradients show how the CIELCh color 89, 6.857, 2.202 changes by changing the brightness by 10 percent. The first figure shows a shift by +10% for each color and the second figure -10%.

Similar to the brightness gradients but the following saturation gradients show a change of the CIELCh color 89, 6.857, 2.202 by changing the saturation by 10% instead.

89, 6.857, 2.202

89, 6.857, 2.202

100, 6.857, 2.202

79, 6.857, 2.202

69, 6.857, 2.202

59, 6.857, 2.202

49, 6.857, 2.202

39, 6.857, 2.202

29, 6.857, 2.202

19, 6.857, 2.202

9, 6.857, 2.202

0, 6.857, 2.202

89, 6.857, 2.202

89, 6.857, 2.202

83, 16.286, 3.337

95, 2.117, 181.647

77, 26.118, 4.625

99, 6.100, 199.128

71, 36.224, 6.173

66, 46.379, 8.080

61, 56.250, 10.470

57, 65.426, 13.502

53, 73.523, 17.331

51, 80.353, 22.038

50, 86.075, 27.442

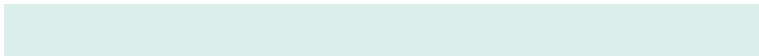
Harmonies

Complementary

The Complementary color scheme is a pair of colors which are on the opposite of each other on the color wheel.



89, 6.857, 2.202



92, 6.662, 180.983

Rectangle

The Rectangle color scheme consists of four colors that form a rectangle on the color wheel.



89, 6.857, 2.202



89, 6.857, 52.202



89, 6.857, 182.202



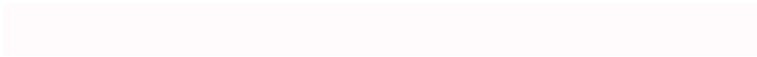
89, 6.857, 232.202

Sweetspot

The Sweet Spot groups the original color and five complimentary colors.



89, 6.855, 2.215



99, 1.892, 1.448



89, 10.622, 318.111



53, 1.075, 1.423



0, 0.000, 0.000



53, 0.007, 296.813

Same Dimension

The Same Dimension uses a secret algorithm to generate beautiful new colors.



89, 6.855, 2.215



94, 8.653, 2.374



90, 5.401, 46.953



47, 5.202, 2.422



38, 71.573, 27.724



8, 28.941, 14.534

Inverse Universe

The Inverse Universe completely reimagines the original color for something new.



89, 6.855, 2.215



94, 8.653, 2.374



91, 5.175, 228.008



47, 5.202, 2.422



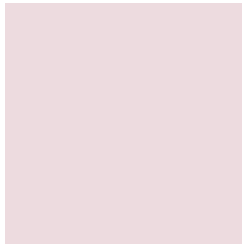
38, 71.573, 27.724



8, 28.941, 14.534

Previews

White Background



This preview shows how the CIELCh color 89, 6.857, 2.202 looks on a white background.

Color Contrast Check

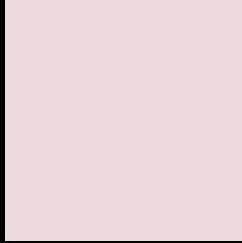
Large Text (above 18pt) WCAG AA × Fail

Any Text WCAG AA × Fail

Large Text (above 18pt) WCAG AAA × Fail

Any Text WCAG AAA × Fail

Black Background



This preview shows how the CIE LCh color 89, 6.857, 2.202 looks on a black background.

Color Contrast Check

Large Text (above 18pt) WCAG AA ✓ Pass

Any Text WCAG AA ✓ Pass

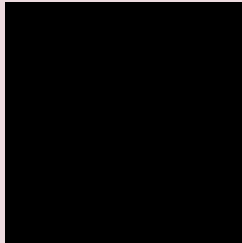
Large Text (above 18pt) WCAG AAA ✓ Pass

Any Text WCAG AAA ✓ Pass

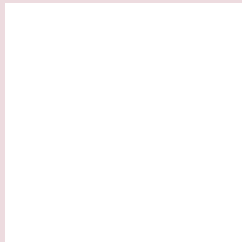
If you want to check with other color combinations, try the [Color Contrast Checker](#).

CIELCh 89, 6.857, 2.202

Background



This preview shows how black text looks on a background with the CIELCh color 89, 6.857, 2.202.

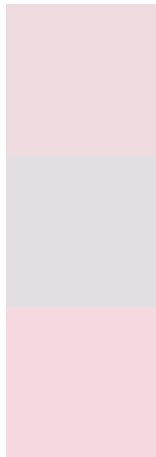


This preview shows how white text looks on a background with the CIELCh color 89, 6.857, 2.202.

Color Blindness Simulation

Color vision deficiency is a very complex topic, and I could not describe the different causes any better than Wikipedia does, so if you want to learn more, you should check out their [article about color blindness](#).

Dichromacy



Original Color

89, 6.857, 2.202

Protanopia

89, 2.396, 338.626

Deuteranopia

89, 11.345, 358.764



Tritanopia
89, 12.264, 330.440

Trichromacy



Original Color

89, 6.857, 2.202

Protanomaly

89, 3.940, 356.226

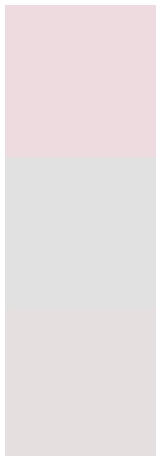
Deuteranomaly

89, 9.789, 358.304

Tritanomaly

89, 9.890, 336.945

Monochromacy



Original Color

89, 6.857, 2.202

Achromatopsia

90, 0.011, 296.813

Achromatomaly

89, 2.226, 5.798

CSS Examples

Text

The CSS property to change the color of the text to CIELCh 89, 6.857, 2.202 is called "color". The color property can be set on classes, ids or directly on the HTML element.

This example shows how text in the color `rgb(237, 219, 223)` looks like.

```
.text, #text, p{  
    color:rgb(237, 219, 223)  
}
```

If you want to add a text shadow in that color use the text-shadow property, you can generate a text shadow directly with our [CSS Text Shadow Generator](#).

Here you see how black text with a 4 pixel rgb(237, 219, 223) colored shadow looks like.

```
.shadow{ text-shadow: 4px 4px 2px rgb(237, 219, 223) }
```

Border

The CSS property to change the border of an element to CIELCh 89, 6.857, 2.202 is called "border". The border property can be set on classes, ids or directly on the HTML element.

This example shows the color as border, it can be applied via the CSS property "border" or "border-color".

```
.border, #border, table{ border:4px solid rgb(237, 219, 223) }
```

If only the border color should be changed use the property border-color.

```
.border{ border-color:rgb(237, 219, 223) }
```

If you want to add a box shadow in that color use:

Here you see how a box with a 4 pixel rgb(237, 219, 223) colored shadow looks like.

```
.boxshadow{ -moz-box-shadow:4px 4px 4px  
4px rgb(237, 219, 223); -webkit-box-  
shadow:4px 4px 4px 4px rgb(237, 219, 223);  
box-shadow:4px 4px 4px 4px rgb(237, 219,  
223) }
```

Background

The CSS property to change the background color of an element to CIELCh 89, 6.857, 2.202 is called "background". The background property can be set on classes, ids or directly on the HTML element.

```
.background, #background, body{  
background: rgb(237, 219, 223) }
```

If only the background color should be changed can be used:

```
.background{ background-color: rgb(237,  
219, 223) }
```

This example shows the color as background, it is applied via the CSS property "background".

To optimize and compress your CSS code, you can use our [online CSS compressor and optimizer](#) based on csstidy. If you want to create a linear or radial gradient as background or border, check our [CSS Gradient Generator](#).

Hey! You found this booklet interesting? Support Converting Colors with the new Membership Option!

The pro membership hides all ads, plus gives you double the colors in the color bucket, and more awesome pro features!

[Learn more, Memberships starting at \\$2.50/m!](#)

**Follow me
on Twitter!**

@ConvertingColor