

Converting Colors

CIELCh(89, 7.318, 0.202)

Have a look what the booklet for
CIELCh(89, 7.318, 0.202) contains.

CIELCh(89, 7.367, 359.248)	3
<i>Conversions</i>	4
<i>Details</i>	6
<i>Harmonies</i>	11
<i>Previews</i>	20
<i>Color Blindness Simulation</i>	23
<i>CSS Examples</i>	26

Color

CIELCh(89, 7.367, 359.248)

Conversions

Conversions Part 1

Format	Color
Hex	EEDBE0
RGB	238, 219, 224
RGB Percent	93%, 86%, 88%
CMY	0.0670, 0.1415, 0.1219
CMYK	0.00, 0.08, 0.06, 0.07
HSL	344°, 36%, 90%
HSV	344°, 8%, 93%
XYZ	73.9891, 74.1641, 80.8816
YIQ	225.2510, 9.7190, 5.5830

Conversions

Conversions Part 2

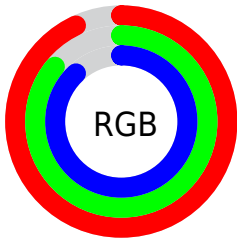
Format	Color
R _Y B	238, 219, 224
Decimal	15653856
CIE Lab	89.00, 7.37, -0.10
CIE LCh	89, 7.367, 359.248
Yxy	74.1641, 0.3230, 0.3238
Android (android.graphics.Color)	4293843936 (0xFFEEDBE0)
YUV	225.2510, -0.6167, 11.1809
Hunter-Lab	86.1186, 2.6513, 4.5985

Details

The CIELCh color $89, 7.367, 359.248$ is a light color, and the websafe version is hex `CCCCCC`. A complement of this color would be $93, 7.172, 177.918$, and the grayscale version is $90, 0.011, 296.813$.

A 20% lighter version of the original color is $100, 0.012, 296.813$, and $69, 7.417, 358.394$ is the 20% darker color. If you saturate the color by 10%, you get $83, 16.959, 0.384$, and if you desaturate by 10%, it is $95, 1.810, 178.708$.

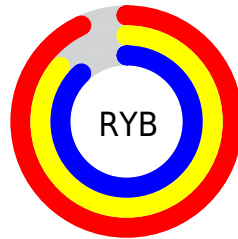
Distribution



Red (93%)

Green (86%)

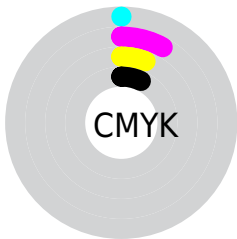
Blue (88%)



Red (93%)

Yellow (86%)

Blue (88%)

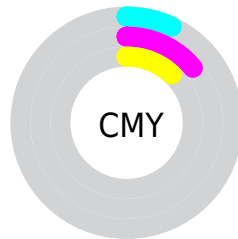


Cyan (0%)

Magenta (8%)

Yellow (6%)

Black (7%)



Cyan (7%)

Magenta (14%)

Yellow (12%)

Brightness & Saturation Gradients

These gradients show how the CIELCh color 89, 7.367, 359.248 changes by changing the brightness by 10 percent. The first figure shows a shift by +10% for each color and the second figure -10%.

Similar to the brightness gradients but the following saturation gradients show a change of the CIELCh color 89, 7.367, 359.248 by changing the saturation by 10% instead.

 89, 7.367, 359.248

 89, 7.367, 359.248

 100, 7.367,
359.248

 79, 7.367, 359.248

 69, 7.367, 359.248

 59, 7.367, 359.248

 49, 7.367, 359.248

 39, 7.367, 359.248

 29, 7.367, 359.248

 19, 7.367, 359.248

 9, 7.367, 359.248

 0, 7.367, 359.248

89, 7.367, 359.248

89, 7.367, 359.248

83, 16.959, 0.384

95, 1.810, 178.708

77, 26.902, 1.671

99, 5.866, 199.147

71, 37.044, 3.206

66, 47.139, 5.082

61, 56.826, 7.425

57, 65.669, 10.391

54, 73.262, 14.149

51, 79.425, 18.815

50, 84.405, 24.277

Harmonies

Complementary

The Complementary color scheme is a pair of colors which are on the opposite of each other on the color wheel.



89, 7.367, 359.248



93, 7.172, 177.918

Rectangle

The Rectangle color scheme consists of four colors that form a rectangle on the color wheel.



89, 7.367, 359.248



89, 7.367, 49.248



89, 7.367, 179.248



89, 7.367, 229.248

Sweetspot

The Sweet Spot groups the original color and five complimentary colors.



89, 7.365, 359.259



99, 1.928, 358.455



89, 11.107, 317.098



53, 1.096, 358.430



0, 0.000, 0.000



53, 0.007, 296.813

Same Dimension

The Same Dimension uses a secret algorithm to generate beautiful new colors.



89, 7.365, 359.259



93, 9.804, 359.484



90, 5.776, 43.023



47, 5.291, 359.423



38, 69.838, 24.342



8, 28.842, 12.426

Inverse Universe

The Inverse Universe completely reimagines the original color for something new.



89, 7.365, 359.259



93, 9.804, 359.484



92, 5.508, 223.866



47, 5.291, 359.423



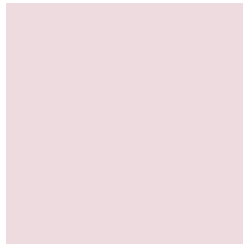
38, 69.838, 24.342



8, 28.842, 12.426

Previews

White Background



This preview shows how the CIELCh color 89, 7.367, 359.248 looks on a white background.

Color Contrast Check

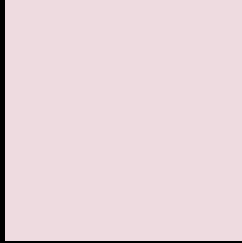
Large Text (above 18pt) WCAG AA × Fail

Any Text WCAG AA × Fail

Large Text (above 18pt) WCAG AAA × Fail

Any Text WCAG AAA × Fail

Black Background



This preview shows how the CIE LCh color 89, 7.367, 359.248 looks on a black background.

Color Contrast Check

Large Text (above 18pt) WCAG AA ✓ Pass

Any Text WCAG AA ✓ Pass

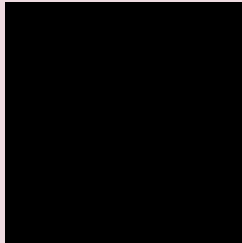
Large Text (above 18pt) WCAG AAA ✓ Pass

Any Text WCAG AAA ✓ Pass

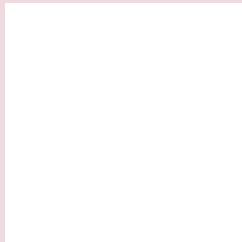
If you want to check with other color combinations, try the [Color Contrast Checker](#).

CIELCh 89, 7.367, 359.248

Background



This preview shows how black text looks on a background with the CIELCh color 89, 7.367, 359.248.

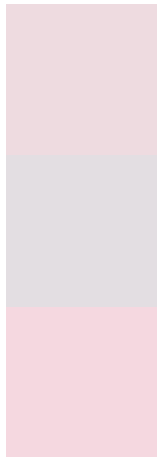


This preview shows how white text looks on a background with the CIELCh color 89, 7.367, 359.248.

Color Blindness Simulation

Color vision deficiency is a very complex topic, and I could not describe the different causes any better than Wikipedia does, so if you want to learn more, you should check out their [article about color blindness](#).

Dichromacy



Original Color

89, 7.367, 359.248

Protanopia

89, 2.768, 330.542

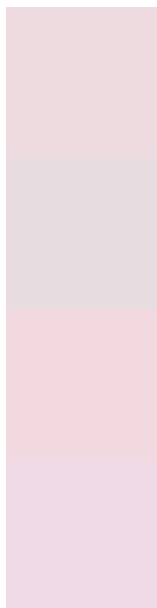
Deuteranopia

89, 11.345, 358.764



Tritanopia
89, 11.874, 332.059

Trichromacy



Original Color
89, 7.367, 359.248

Protanomaly
89, 4.175, 349.682

Deuteranomaly
89, 9.789, 358.304

Tritanomaly
89, 9.820, 340.637

Monochromacy



Original Color
89, 7.367, 359.248

Achromatopsia
90, 0.011, 296.813

Achromatomaly
89, 2.734, 357.043

CSS Examples

Text

The CSS property to change the color of the text to CIELCh 89, 7.367, 359.248 is called "color". The color property can be set on classes, ids or directly on the HTML element.

This example shows how text in the color `rgb(238, 219, 224)` looks like.

```
.text, #text, p{  
    color:rgb(238, 219, 224)  
}
```

If you want to add a text shadow in that color use the text-shadow property, you can generate a text shadow directly with our [CSS Text Shadow Generator](#).

Here you see how black text with a 4 pixel rgb(238, 219, 224) colored shadow looks like.

```
.shadow{ text-shadow: 4px 4px 2px rgb(238, 219, 224) }
```

Border

The CSS property to change the border of an element to CIELCh 89, 7.367, 359.248 is called "border". The border property can be set on classes, ids or directly on the HTML element.

This example shows the color as border, it can be applied via the CSS property "border" or "border-color".

```
.border, #border, table{ border:4px solid rgb(238, 219, 224) }
```

If only the border color should be changed use the property border-color.

```
.border{ border-color:rgb(238, 219, 224) }
```

If you want to add a box shadow in that color use:

Here you see how a box with a 4 pixel rgb(238, 219, 224) colored shadow looks like.

```
.boxshadow{ -moz-box-shadow:4px 4px 4px  
4px rgb(238, 219, 224); -webkit-box-  
shadow:4px 4px 4px 4px rgb(238, 219, 224);  
box-shadow:4px 4px 4px 4px rgb(238, 219,  
224) }
```

Background

The CSS property to change the background color of an element to CIELCh 89, 7.367, 359.248 is called "background". The background property can be set on classes, ids or directly on the HTML element.

```
.background, #background, body{  
background: rgb(238, 219, 224) }
```

If only the background color should be changed can be used:

```
.background{ background-color: rgb(238,  
219, 224) }
```

This example shows the color as background, it is applied via the CSS property "background".

To optimize and compress your CSS code, you can use our [online CSS compressor and optimizer](#) based on csstidy. If you want to create a linear or radial gradient as background or border, check our [CSS Gradient Generator](#).

Hey! You found this booklet interesting? Support Converting Colors with the new Membership Option!

The pro membership hides all ads, plus gives you double the colors in the color bucket, and more awesome pro features!

[Learn more, Memberships starting at \\$2.50/m!](#)

**Follow me
on Twitter!**

@ConvertingColor