

Converting Colors

CIELCh(89, 7.647, 24.817)

Have a look what the booklet for
CIELCh(89, 7.647, 24.817) contains.

CIELCh(89, 7.703, 23.730)	3
<i>Conversions</i>	4
<i>Details</i>	6
<i>Harmonies</i>	11
<i>Previews</i>	20
<i>Color Blindness Simulation</i>	23
<i>CSS Examples</i>	26

Color

CIELCh(89, 7.703, 23.730)

Conversions

Conversions Part 1

Format	Color
Hex	F0DBDA
RGB	240, 219, 218
RGB Percent	94%, 86%, 85%
CMY	0.0593, 0.1416, 0.1455
CMYK	0.00, 0.09, 0.09, 0.06
HSL	3°, 42%, 90%
HSV	3°, 9%, 94%
XYZ	73.8373, 74.1641, 76.6745
YIQ	225.1650, 12.8370, 4.1410

Conversions

Conversions Part 2

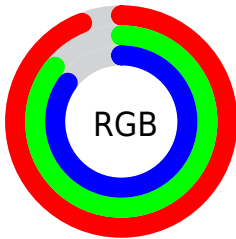
Format	Color
R _Y B	240, 219, 218
Decimal	15784922
CIE Lab	89.00, 7.05, 3.10
CIE LCh	89, 7.703, 23.730
Yxy	74.1641, 0.3286, 0.3301
Android (android.graphics.Color)	4293975002 (0xFFFF0DBDA)
YUV	225.1650, -3.5323, 13.0103
Hunter-Lab	86.1186, 2.3368, 7.4950

Details

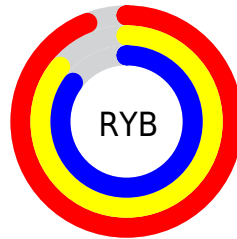
The CIELCh color **89, 7.703, 23.730** is a light color, and the websafe version is hex **CCCCCC**. A complement of this color would be **93, 7.259, 203.118**, and the grayscale version is **90, 0.011, 296.813**.

A 20% lighter version of the original color is **100, 0.012, 296.813**, and **69, 7.777, 24.050** is the 20% darker color. If you saturate the color by 10%, you get **83, 16.770, 24.425**, and if you desaturate by 10%, it is **95, 0.668, 204.312**.

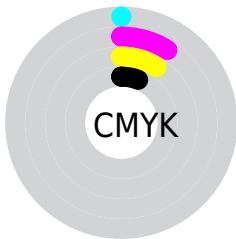
Distribution



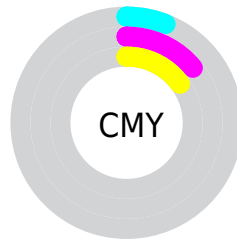
- Red (94%)
- Green (86%)
- Blue (85%)



- Red (94%)
- Yellow (86%)
- Blue (85%)



- Cyan (0%)
- Magenta (9%)
- Yellow (9%)
- Black (6%)

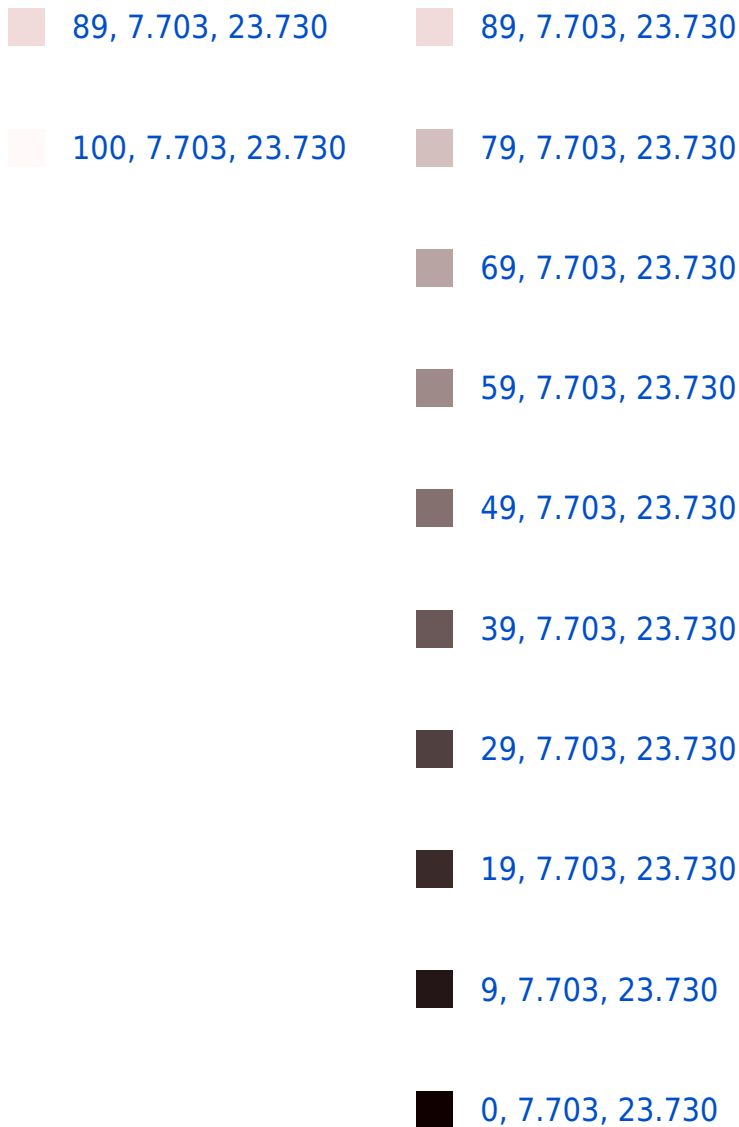


- Cyan (6%)
- Magenta (14%)
- Yellow (15%)

Brightness & Saturation Gradients

These gradients show how the CIELCh color 89, 7.703, 23.730 changes by changing the brightness by 10 percent. The first figure shows a shift by +10% for each color and the second figure -10%.

Similar to the brightness gradients but the following saturation gradients show a change of the CIELCh color 89, 7.703, 23.730 by changing the saturation by 10% instead.



89, 7.703, 23.730

89, 7.703, 23.730

83, 16.770, 24.425

95, 0.668, 204.312

77, 26.564, 25.290

99, 5.201, 199.203

71, 37.063, 26.436

66, 48.175, 27.953

61, 59.707, 29.930

57, 71.341, 32.420

54, 82.561, 35.333

52, 92.341, 38.206

50, 98.840, 40.169

Harmonies

Complementary

The Complementary color scheme is a pair of colors which are on the opposite of each other on the color wheel.



89, 7.703, 23.730



93, 7.259, 203.118

Rectangle

The Rectangle color scheme consists of four colors that form a rectangle on the color wheel.



89, 7.703, 23.730



89, 7.703, 73.730



89, 7.703, 203.730



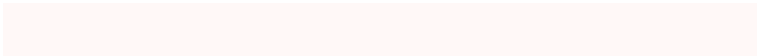
89, 7.703, 253.730

Sweetspot

The Sweet Spot groups the original color and five complimentary colors.



89, 7.701, 23.747



98, 2.582, 23.265



89, 13.588, 325.833



52, 1.964, 23.357



0, 0.000, 0.000



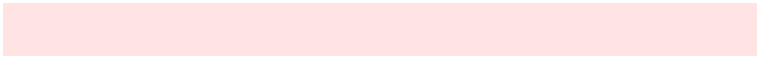
53, 0.007, 296.813

Same Dimension

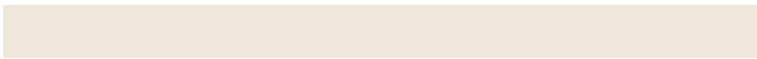
The Same Dimension uses a secret algorithm to generate beautiful new colors.



89, 7.701, 23.747



93, 9.781, 23.866



92, 7.104, 77.736



47, 4.775, 23.766



38, 81.070, 40.483



8, 28.846, 26.288

Inverse Universe

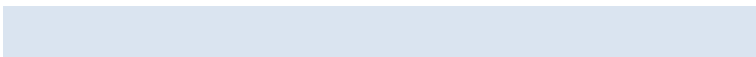
The Inverse Universe completely reimagines the original color for something new.



93, 7.259, 203.118



98, 9.104, 203.036



90, 6.988, 260.218



49, 4.491, 203.104



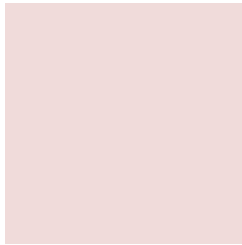
65, 36.831, 203.907



20, 16.204, 202.800

Previews

White Background



This preview shows how the CIELCh color 89, 7.703, 23.730 looks on a white background.

Color Contrast Check

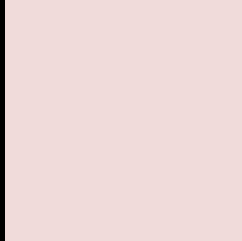
Large Text (above 18pt) WCAG AA × Fail

Any Text WCAG AA × Fail

Large Text (above 18pt) WCAG AAA × Fail

Any Text WCAG AAA × Fail

Black Background



This preview shows how the CIE LCh color 89, 7.703, 23.730 looks on a black background.

Color Contrast Check

Large Text (above 18pt) WCAG AA ✓ Pass

Any Text WCAG AA ✓ Pass

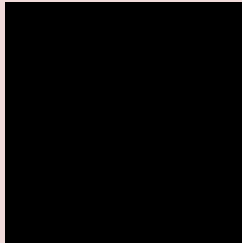
Large Text (above 18pt) WCAG AAA ✓ Pass

Any Text WCAG AAA ✓ Pass

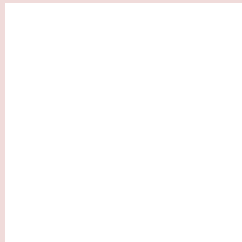
If you want to check with other color combinations, try the [Color Contrast Checker](#).

CIELCh 89, 7.703, 23.730

Background



This preview shows how black text looks on a background with the CIELCh color 89, 7.703, 23.730.



This preview shows how white text looks on a background with the CIELCh color 89, 7.703, 23.730.

Color Blindness Simulation

Color vision deficiency is a very complex topic, and I could not describe the different causes any better than Wikipedia does, so if you want to learn more, you should check out their [article about color blindness](#).

Dichromacy



Original Color

89, 7.703, 23.730

Protanopia

89, 2.369, 60.304

Deuteranopia

89, 11.448, 15.016



Tritanopia
89, 12.877, 336.960

Trichromacy



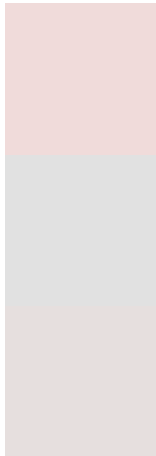
Original Color
89, 7.703, 23.730

Protanomaly
89, 3.938, 42.757

Deuteranomaly
89, 9.925, 17.083

Tritanomaly
89, 10.397, 346.786

Monochromacy



Original Color
89, 7.703, 23.730

Achromatopsia
90, 0.011, 296.813

Achromatomaly
89, 2.572, 30.982

CSS Examples

Text

The CSS property to change the color of the text to CIELCh 89, 7.703, 23.730 is called "color". The color property can be set on classes, ids or directly on the HTML element.

This example shows how text in the color `rgb(240, 219, 218)` looks like.

```
.text, #text, p{  
    color:rgb(240, 219, 218)  
}
```

If you want to add a text shadow in that color use the text-shadow property, you can generate a text shadow directly with our [CSS Text Shadow Generator](#).

Here you see how black text with a 4 pixel rgb(240, 219, 218) colored shadow looks like.

```
.shadow{ text-shadow: 4px 4px 2px rgb(240, 219, 218) }
```

Border

The CSS property to change the border of an element to CIELCh 89, 7.703, 23.730 is called "border". The border property can be set on classes, ids or directly on the HTML element.

This example shows the color as border, it can be applied via the CSS property "border" or "border-color".

```
.border, #border, table{ border:4px solid rgb(240, 219, 218) }
```

If only the border color should be changed use the property `border-color`.

```
.border{ border-color:rgb(240, 219, 218) }
```

If you want to add a box shadow in that color use:

Here you see how a box with a 4 pixel `rgb(240, 219, 218)` colored shadow looks like.

```
.boxshadow{ -moz-box-shadow:4px 4px 4px  
4px rgb(240, 219, 218); -webkit-box-  
shadow:4px 4px 4px 4px rgb(240, 219, 218);  
box-shadow:4px 4px 4px 4px rgb(240, 219,  
218) }
```

Background

The CSS property to change the background color of an element to CIELCh 89, 7.703, 23.730 is called "background". The background property can be set on classes, ids or directly on the HTML element.

```
.background, #background, body{  
background: rgb(240, 219, 218) }
```

If only the background color should be changed can be used:

```
.background{ background-color: rgb(240,  
219, 218) }
```

This example shows the color as background, it is applied via the CSS property "background".

To optimize and compress your CSS code, you can use our [online CSS compressor and optimizer](#) based on csstidy. If you want to create a linear or radial gradient as background or border, check our [CSS Gradient Generator](#).

Hey! You found this booklet interesting? Support Converting Colors with the new Membership Option!

The pro membership hides all ads, plus gives you double the colors in the color bucket, and more awesome pro features!

[Learn more, Memberships starting at \\$2.50/m!](#)

**Follow me
on Twitter!**

@ConvertingColor