

Converting Colors

CIELCh(89, 7.777, 337.937)

Have a look what the booklet for
CIELCh(89, 7.777, 337.937) contains.

CIELCh(89, 7.780, 337.933)	3
<i>Conversions</i>	4
<i>Details</i>	6
<i>Harmonies</i>	12
<i>Previews</i>	21
<i>Color Blindness Simulation</i>	24
<i>CSS Examples</i>	27

Color

CIELCh(89, 7.780, 337.933)

Conversions

Conversions Part 1

Format	Color
Hex	EBDBE5
RGB	235, 219, 229
RGB Percent	92%, 86%, 90%
CMY	0.0775, 0.1402, 0.1010
CMYK	0.00, 0.07, 0.03, 0.08
HSL	323°, 29%, 89%
HSV	323°, 7%, 92%
XYZ	73.9137, 74.1641, 84.7269
YIQ	224.9240, 6.3260, 6.5020

Conversions

Conversions Part 2

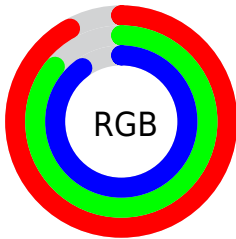
Format	Color
R _Y B	235, 219, 229
Decimal	15457253
CIE Lab	89.00, 7.21, -2.92
CIE LCh	89, 7.780, 337.933
Yxy	74.1641, 0.3175, 0.3186
Android (android.graphics.Color)	4293647333 (0xFFEBDBE5)
YUV	224.9240, 2.0095, 8.8367
Hunter-Lab	86.1186, 2.4950, 1.9511

Details

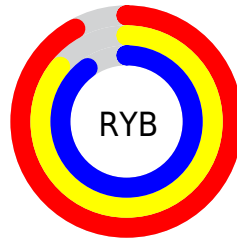
The CIELCh color $89, 7.780, 337.933$ is a light color, and the websafe version is hex `CCCCCC`. A complement of this color would be $92, 7.729, 157.037$, and the grayscale version is $90, 0.011, 296.813$.

A 20% lighter version of the original color is $100, 0.012, 296.813$, and $69, 7.916, 336.207$ is the 20% darker color. If you saturate the color by 10%, you get $83, 19.372, 338.749$, and if you desaturate by 10%, it is $95, 3.603, 157.380$.

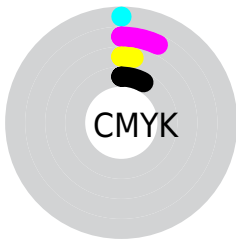
Distribution



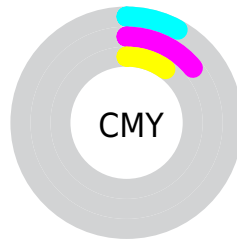
- Red (92%)
- Green (86%)
- Blue (90%)



- Red (92%)
- Yellow (86%)
- Blue (90%)



- Cyan (0%)
- Magenta (7%)
- Yellow (3%)
- Black (8%)



- Cyan (8%)
- Magenta (14%)
- Yellow (10%)

Brightness & Saturation Gradients

These gradients show how the CIELCh color 89, 7.780, 337.933 changes by changing the brightness by 10 percent. The first figure shows a shift by +10% for each color and the second figure -10%.

Similar to the brightness gradients but the following saturation gradients show a change of the CIELCh color 89, 7.780, 337.933 by changing the saturation by 10% instead.

89, 7.780, 337.933

89, 7.780, 337.933

100, 7.780,
337.933

79, 7.780, 337.933

69, 7.780, 337.933

59, 7.780, 337.933

49, 7.780, 337.933

39, 7.780, 337.933

29, 7.780, 337.933

19, 7.780, 337.933

9, 7.780, 337.933

0, 7.780, 337.933

89, 7.780, 337.933

89, 7.780, 337.933

83, 19.372,
338.749

95, 3.603, 157.380

77, 31.034,
339.605

98, 8.061, 168.154

99, 6.768, 199.075

72, 42.524,
340.539

67, 53.491,
341.579

62, 63.460,
342.761

58, 71.857,
344.141

55, 78.102,
345.800

53, 81.782,
347.842

■ 52, 82.882,
350.381

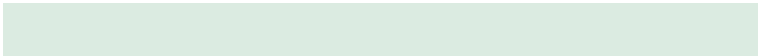
Harmonies

Complementary

The Complementary color scheme is a pair of colors which are on the opposite of each other on the color wheel.



89, 7.780, 337.933



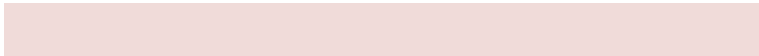
92, 7.729, 157.037

Rectangle

The Rectangle color scheme consists of four colors that form a rectangle on the color wheel.



89, 7.780, 337.933



89, 7.780, 27.933



89, 7.780, 157.933



89, 7.780, 207.933

Sweetspot

The Sweet Spot groups the original color and five complimentary colors.



89, 7.777, 337.937



99, 2.435, 337.458



88, 8.638, 304.630



53, 1.384, 337.441



0, 0.000, 0.000



53, 0.007, 296.813

Same Dimension

The Same Dimension uses a secret algorithm to generate beautiful new colors.



89, 7.777, 337.937



95, 9.778, 338.038



89, 5.916, 8.951



46, 6.498, 338.154



40, 68.394, 350.741



8, 30.192, 346.371

Inverse Universe

The Inverse Universe completely reimagines the original color for something new.



89, 7.777, 337.937



95, 9.778, 338.038



92, 5.727, 188.006



46, 6.498, 338.154



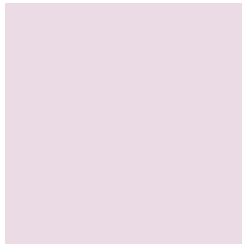
40, 68.394, 350.741



8, 30.192, 346.371

Previews

White Background



This preview shows how the CIELCh color 89, 7.780, 337.933 looks on a white background.

Color Contrast Check

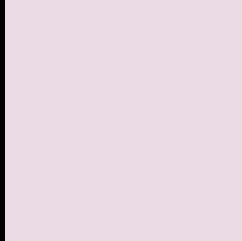
Large Text (above 18pt) WCAG AA × Fail

Any Text WCAG AA × Fail

Large Text (above 18pt) WCAG AAA × Fail

Any Text WCAG AAA × Fail

Black Background



This preview shows how the CIELCh color 89, 7.780, 337.933 looks on a black background.

Color Contrast Check

Large Text (above 18pt) WCAG AA ✓ Pass

Any Text WCAG AA ✓ Pass

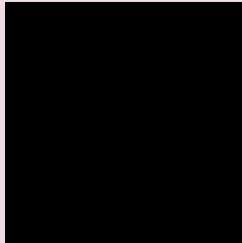
Large Text (above 18pt) WCAG AAA ✓ Pass

Any Text WCAG AAA ✓ Pass

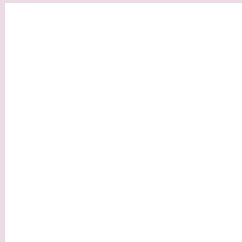
If you want to check with other color combinations, try the [Color Contrast Checker](#).

CIELCh 89, 7.780, 337.933

Background



This preview shows how black text looks on a background with the CIELCh color 89, 7.780, 337.933.



This preview shows how white text looks on a background with the CIELCh color 89, 7.780, 337.933.

Color Blindness Simulation

Color vision deficiency is a very complex topic, and I could not describe the different causes any better than Wikipedia does, so if you want to learn more, you should check out their [article about color blindness](#).

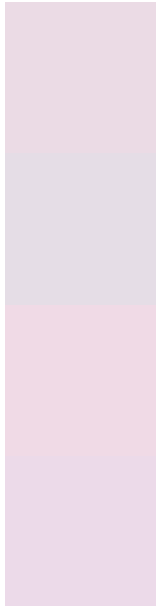
Dichromacy





Tritanopia
89, 10.975, 326.368

Trichromacy



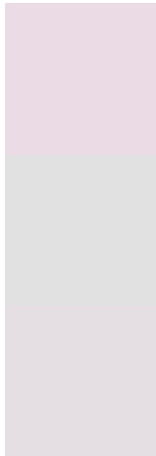
Original Color
89, 7.780, 337.933

Protanomaly
89, 5.521, 321.542

Deuteranomaly
89, 10.100, 341.974

Tritanomaly
89, 10.156, 329.820

Monochromacy



Original Color
89, 7.780, 337.933

Achromatopsia
90, 0.011, 296.813

Achromatomaly
89, 3.012, 335.720

CSS Examples

Text

The CSS property to change the color of the text to CIELCh 89, 7.780, 337.933 is called "color". The color property can be set on classes, ids or directly on the HTML element.

This example shows how text in the color `rgb(235, 219, 229)` looks like.

```
.text, #text, p{  
    color:rgb(235, 219, 229)  
}
```

If you want to add a text shadow in that color use the text-shadow property, you can generate a text shadow directly with our [CSS Text Shadow Generator](#).

Here you see how black text with a 4 pixel rgb(235, 219, 229) colored shadow looks like.

```
.shadow{ text-shadow: 4px 4px 2px rgb(235, 219, 229) }
```

Border

The CSS property to change the border of an element to CIELCh 89, 7.780, 337.933 is called "border". The border property can be set on classes, ids or directly on the HTML element.

This example shows the color as border, it can be applied via the CSS property "border" or "border-color".

```
.border, #border, table{ border:4px solid rgb(235, 219, 229) }
```

If only the border color should be changed use the property `border-color`.

```
.border{ border-color:rgb(235, 219, 229) }
```

If you want to add a box shadow in that color use:

Here you see how a box with a 4 pixel `rgb(235, 219, 229)` colored shadow looks like.

```
.boxshadow{ -moz-box-shadow:4px 4px 4px 4px rgb(235, 219, 229); -webkit-box-shadow:4px 4px 4px 4px rgb(235, 219, 229); box-shadow:4px 4px 4px 4px rgb(235, 219, 229) }
```

Background

The CSS property to change the background color of an element to CIELCh 89, 7.780, 337.933 is called "background". The background property can be set on classes, ids or directly on the HTML element.

```
.background, #background, body{  
background: rgb(235, 219, 229) }
```

If only the background color should be changed can be used:

```
.background{ background-color: rgb(235,  
219, 229) }
```

This example shows the color as background, it is applied via the CSS property "background".

To optimize and compress your CSS code, you can use our [online CSS compressor and optimizer](#) based on csstidy. If you want to create a linear or radial gradient as background or border, check our [CSS Gradient Generator](#).

Hey! You found this booklet interesting? Support Converting Colors with the new Membership Option!

The pro membership hides all ads, plus gives you double the colors in the color bucket, and more awesome pro features!

[Learn more, Memberships starting at \\$2.50/m!](#)

**Follow me
on Twitter!**

@ConvertingColor