

Converting Colors

CIELCh(89, 7.797, 351.644)

Have a look what the booklet for
CIELCh(89, 7.797, 351.644) contains.

CIELCh(89, 7.784, 352.069)	3
<i>Conversions</i>	4
<i>Details</i>	6
<i>Harmonies</i>	12
<i>Previews</i>	21
<i>Color Blindness Simulation</i>	24
<i>CSS Examples</i>	27

Color

CIELCh(89, 7.784, 352.069)

Conversions

Conversions Part 1

Format	Color
Hex	EEDBE2
RGB	238, 219, 226
RGB Percent	93%, 86%, 89%
CMY	0.0675, 0.1420, 0.1146
CMYK	0.00, 0.08, 0.05, 0.07
HSL	338°, 36%, 90%
HSV	338°, 8%, 93%
XYZ	74.1548, 74.1641, 82.1979
YIQ	225.4790, 9.0770, 6.2050

Conversions

Conversions Part 2

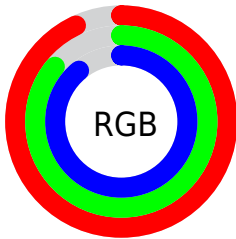
Format	Color
R _Y B	238, 219, 226
Decimal	15653858
CIE Lab	89.00, 7.71, -1.07
CIE LCh	89, 7.784, 352.069
Yxy	74.1641, 0.3217, 0.3217
Android (android.graphics.Color)	4293843938 (0xFFEEDBE2)
YUV	225.4790, 0.2569, 10.9809
Hunter-Lab	86.1186, 2.9948, 3.6923

Details

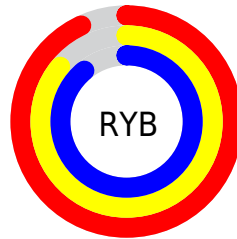
The CIELCh color `89, 7.784, 352.069` is a light color, and the websafe version is hex `CCCCCC`. A complement of this color would be `92, 7.638, 170.747`, and the grayscale version is `90, 0.011, 296.813`.

A 20% lighter version of the original color is `100, 0.012, 296.813`, and `69, 7.870, 350.948` is the 20% darker color. If you saturate the color by 10%, you get `83, 17.812, 353.149`, and if you desaturate by 10%, it is `95, 1.915, 171.502`.

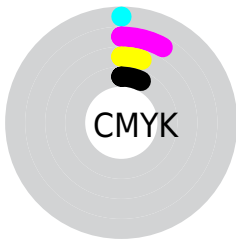
Distribution



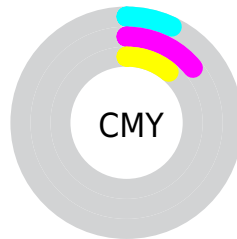
- Red (93%)
- Green (86%)
- Blue (89%)



- Red (93%)
- Yellow (86%)
- Blue (89%)



- Cyan (0%)
- Magenta (8%)
- Yellow (5%)
- Black (7%)



- Cyan (7%)
- Magenta (14%)
- Yellow (11%)

Brightness & Saturation Gradients

These gradients show how the CIELCh color 89, 7.784, 352.069 changes by changing the brightness by 10 percent. The first figure shows a shift by +10% for each color and the second figure -10%.

Similar to the brightness gradients but the following saturation gradients show a change of the CIELCh color 89, 7.784, 352.069 by changing the saturation by 10% instead.

89, 7.784, 352.069

89, 7.784, 352.069

100, 7.784,
352.069

79, 7.784, 352.069

69, 7.784, 352.069

59, 7.784, 352.069

49, 7.784, 352.069

39, 7.784, 352.069

29, 7.784, 352.069

19, 7.784, 352.069

9, 7.784, 352.069

0, 7.784, 352.069

89, 7.784, 352.069

89, 7.784, 352.069

83, 17.812,
353.149

95, 1.915, 171.502

99, 5.916, 199.143

77, 28.075,
354.350

71, 38.384,
355.754

66, 48.448,
357.436

61, 57.857,
359.500

57, 66.113, 2.089

54, 72.743, 5.378

52, 77.503, 9.542

51, 80.655, 14.633

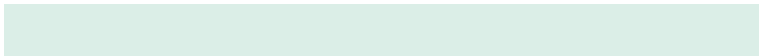
Harmonies

Complementary

The Complementary color scheme is a pair of colors which are on the opposite of each other on the color wheel.



89, 7.784, 352.069



92, 7.638, 170.747

Rectangle

The Rectangle color scheme consists of four colors that form a rectangle on the color wheel.



89, 7.784, 352.069



89, 7.784, 42.069



89, 7.784, 172.069



89, 7.784, 222.069

Sweetspot

The Sweet Spot groups the original color and five complimentary colors.



89, 7.782, 352.077



99, 2.044, 351.319



89, 10.782, 313.354



53, 1.162, 351.296



0, 0.000, 0.000



53, 0.007, 296.813

Same Dimension

The Same Dimension uses a secret algorithm to generate beautiful new colors.



89, 7.782, 352.077



93, 10.347, 352.292



89, 6.224, 30.355



47, 5.586, 352.234



39, 66.740, 14.702



8, 28.775, 5.796

Inverse Universe

The Inverse Universe completely reimagines the original color for something new.



89, 7.782, 352.077



93, 10.347, 352.292



92, 5.911, 210.327



47, 5.586, 352.234



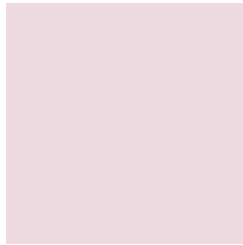
39, 66.740, 14.702



8, 28.775, 5.796

Previews

White Background



This preview shows how the CIELCh color 89, 7.784, 352.069 looks on a white background.

Color Contrast Check

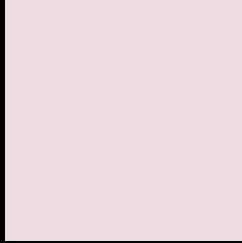
Large Text (above 18pt) WCAG AA × Fail

Any Text WCAG AA × Fail

Large Text (above 18pt) WCAG AAA × Fail

Any Text WCAG AAA × Fail

Black Background



This preview shows how the CIE LCh color 89, 7.784, 352.069 looks on a black background.

Color Contrast Check

Large Text (above 18pt) WCAG AA ✓ Pass

Any Text WCAG AA ✓ Pass

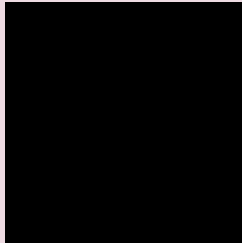
Large Text (above 18pt) WCAG AAA ✓ Pass

Any Text WCAG AAA ✓ Pass

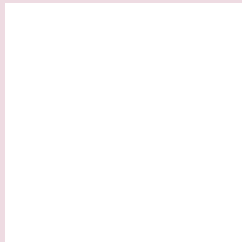
If you want to check with other color combinations, try the [Color Contrast Checker](#).

CIELCh 89, 7.784, 352.069

Background



This preview shows how black text looks on a background with the CIELCh color 89, 7.784, 352.069.



This preview shows how white text looks on a background with the CIELCh color 89, 7.784, 352.069.

Color Blindness Simulation

Color vision deficiency is a very complex topic, and I could not describe the different causes any better than Wikipedia does, so if you want to learn more, you should check out their [article about color blindness](#).

Dichromacy





Tritanopia
89, 11.874, 332.059

Trichromacy



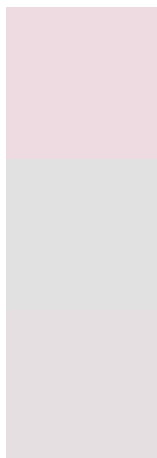
Original Color
89, 7.784, 352.069

Protanomaly
89, 4.517, 335.853

Deuteranomaly
89, 9.645, 354.581

Tritanomaly
89, 10.154, 338.368

Monochromacy



Original Color
89, 7.784, 352.069

Achromatopsia
90, 0.011, 296.813

Achromatomaly
89, 2.734, 357.043

CSS Examples

Text

The CSS property to change the color of the text to CIELCh 89, 7.784, 352.069 is called "color". The color property can be set on classes, ids or directly on the HTML element.

This example shows how text in the color `rgb(238, 219, 226)` looks like.

```
.text, #text, p{  
    color:rgb(238, 219, 226)  
}
```

If you want to add a text shadow in that color use the text-shadow property, you can generate a text shadow directly with our [CSS Text Shadow Generator](#).

Here you see how black text with a 4 pixel rgb(238, 219, 226) colored shadow looks like.

```
.shadow{ text-shadow: 4px 4px 2px rgb(238, 219, 226) }
```

Border

The CSS property to change the border of an element to CIELCh 89, 7.784, 352.069 is called "border". The border property can be set on classes, ids or directly on the HTML element.

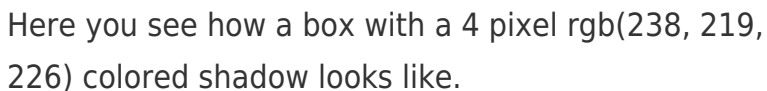
This example shows the color as border, it can be applied via the CSS property "border" or "border-color".

```
.border, #border, table{ border:4px solid rgb(238, 219, 226) }
```

If only the border color should be changed use the property `border-color`.

```
.border{ border-color:rgb(238, 219, 226) }
```

If you want to add a box shadow in that color use:



Here you see how a box with a 4 pixel `rgb(238, 219, 226)` colored shadow looks like.

```
.boxshadow{ -moz-box-shadow:4px 4px 4px 4px rgb(238, 219, 226); -webkit-box-shadow:4px 4px 4px 4px rgb(238, 219, 226); box-shadow:4px 4px 4px 4px rgb(238, 219, 226) }
```

Background

The CSS property to change the background color of an element to CIELCh 89, 7.784, 352.069 is called "background". The background property can be set on classes, ids or directly on the HTML element.

```
.background, #background, body{  
background: rgb(238, 219, 226) }
```

If only the background color should be changed can be used:

```
.background{ background-color: rgb(238,  
219, 226) }
```

This example shows the color as background, it is applied via the CSS property "background".

To optimize and compress your CSS code, you can use our [online CSS compressor and optimizer](#) based on csstidy. If you want to create a linear or radial gradient as background or border, check our [CSS Gradient Generator](#).

Hey! You found this booklet interesting? Support Converting Colors with the new Membership Option!

The pro membership hides all ads, plus gives you double the colors in the color bucket, and more awesome pro features!

[Learn more, Memberships starting at \\$2.50/m!](#)

**Follow me
on Twitter!**

@ConvertingColor