

Converting Colors

CIELCh(89, 7.830, 2.418)

Have a look what the booklet for
CIELCh(89, 7.830, 2.418) contains.

| | |
|--|----|
| CIELCh(89, 7.559, 3.957) | 3 |
| <i>Conversions</i> | 4 |
| <i>Details</i> | 6 |
| <i>Harmonies</i> | 11 |
| <i>Previews</i> | 20 |
| <i>Color Blindness Simulation</i> | 23 |
| <i>CSS Examples</i> | 26 |

Color

CIELCh(89, 7.559, 3.957)

Conversions

Conversions Part 1

| Format | Color |
|-------------|---------------------------|
| Hex | EFDBDF |
| RGB | 239, 219, 223 |
| RGB Percent | 94%, 86%, 87% |
| CMY | 0.0637, 0.1421, 0.1264 |
| CMYK | 0.00, 0.08, 0.07, 0.06 |
| HSL | 348°, 38%, 90% |
| HSV | 348°, 8%, 94% |
| XYZ | 74.0734, 74.1641, 80.0561 |
| YIQ | 225.4360, 10.6360, 5.4840 |

Conversions

Conversions Part 2

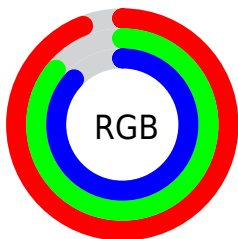
| Format | Color |
|-------------------------------------|-------------------------------|
| R _Y B | 239, 219, 223 |
| Decimal | 15719391 |
| CIE Lab | 89.00, 7.54, 0.52 |
| CIE LCh | 89, 7.559, 3.957 |
| Yxy | 74.1641, 0.3245, 0.3249 |
| Android (android.graphics.Color) | 4293909471 (0xFFEFDBDF) |
| YUV | 225.4360, -1.2009, 11.8956 |
| Hunter-Lab | 86.1186, 2.8260, 5.1669 |

Details

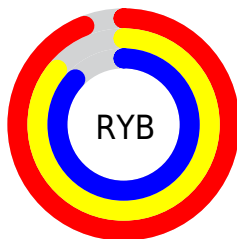
The CIELCh color **89, 7.559, 3.957** is a light color, and the websafe version is hex **CCCCCC**. A complement of this color would be **93, 7.308, 182.593**, and the grayscale version is **90, 0.011, 296.813**.

A 20% lighter version of the original color is **100, 0.012, 296.813**, and **69, 7.614, 3.364** is the 20% darker color. If you saturate the color by 10%, you get **83, 17.018, 5.094**, and if you desaturate by 10%, it is **95, 1.423, 183.534**.

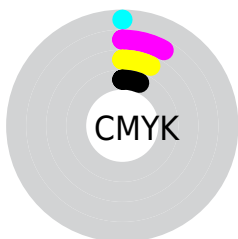
Distribution



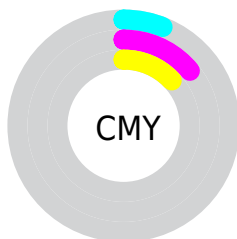
- Red (94%)
- Green (86%)
- Blue (87%)



- Red (94%)
- Yellow (86%)
- Blue (87%)



- Cyan (0%)
- Magenta (8%)
- Yellow (7%)
- Black (6%)



- Cyan (6%)
- Magenta (14%)
- Yellow (13%)

Brightness & Saturation Gradients

These gradients show how the CIELCh color 89, 7.559, 3.957 changes by changing the brightness by 10 percent. The first figure shows a shift by +10% for each color and the second figure -10%.

Similar to the brightness gradients but the following saturation gradients show a change of the CIELCh color 89, 7.559, 3.957 by changing the saturation by 10% instead.

89, 7.559, 3.957

89, 7.559, 3.957

100, 7.559, 3.957

79, 7.559, 3.957

69, 7.559, 3.957

59, 7.559, 3.957

49, 7.559, 3.957

39, 7.559, 3.957

29, 7.559, 3.957

19, 7.559, 3.957

9, 7.559, 3.957

0, 7.559, 3.957

89, 7.559, 3.957

89, 7.559, 3.957

83, 17.018, 5.094

95, 1.423, 183.534

77, 26.905, 6.399

99, 5.582, 199.170

71, 37.090, 7.980

65, 47.351, 9.937

61, 57.356, 12.403

57, 66.701, 15.532

53, 75.019, 19.469

51, 82.138, 24.253

50, 88.209, 29.597

Harmonies

Complementary

The Complementary color scheme is a pair of colors which are on the opposite of each other on the color wheel.



89, 7.559, 3.957



93, 7.308, 182.593

Rectangle

The Rectangle color scheme consists of four colors that form a rectangle on the color wheel.



89, 7.559, 3.957



89, 7.559, 53.957



89, 7.559, 183.957



89, 7.559, 233.957

Sweetspot

The Sweet Spot groups the original color and five complimentary colors.



89, 7.557, 3.969



98, 2.817, 3.317



89, 11.903, 319.163



52, 2.139, 3.437



0, 0.000, 0.000



53, 0.007, 296.813

Same Dimension

The Same Dimension uses a secret algorithm to generate beautiful new colors.



89, 7.557, 3.969



93, 9.561, 4.150



90, 5.965, 50.913



47, 5.159, 4.089



38, 72.601, 29.437



8, 29.003, 15.570

Inverse Universe

The Inverse Universe completely reimagines the original color for something new.



89, 7.557, 3.969



93, 9.561, 4.150



91, 5.705, 232.282



47, 5.159, 4.089



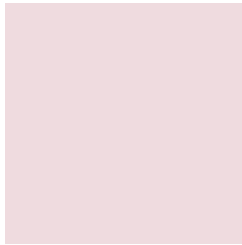
38, 72.601, 29.437



8, 29.003, 15.570

Previews

White Background



This preview shows how the CIELCh color 89, 7.559, 3.957 looks on a white background.

Color Contrast Check

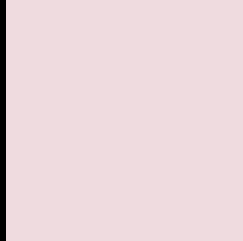
Large Text (above 18pt) WCAG AA × Fail

Any Text WCAG AA × Fail

Large Text (above 18pt) WCAG AAA × Fail

Any Text WCAG AAA × Fail

Black Background



This preview shows how the CIE LCh color 89, 7.559, 3.957 looks on a black background.

Color Contrast Check

Large Text (above 18pt) WCAG AA ✓ Pass

Any Text WCAG AA ✓ Pass

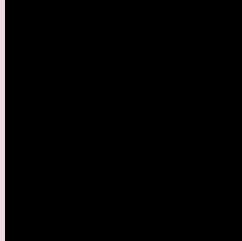
Large Text (above 18pt) WCAG AAA ✓ Pass

Any Text WCAG AAA ✓ Pass

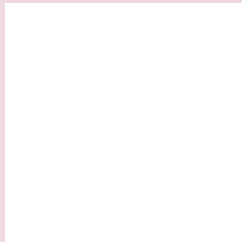
If you want to check with other color combinations, try the [Color Contrast Checker](#).

CIELCh 89, 7.559, 3.957

Background



This preview shows how black text looks on a background with the CIELCh color 89, 7.559, 3.957.

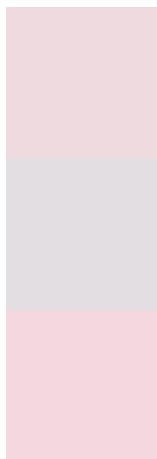


This preview shows how white text looks on a background with the CIELCh color 89, 7.559, 3.957.

Color Blindness Simulation

Color vision deficiency is a very complex topic, and I could not describe the different causes any better than Wikipedia does, so if you want to learn more, you should check out their [article about color blindness](#).

Dichromacy



Original Color

89, 7.559, 3.957

Protanopia

89, 2.396, 338.626

Deuteranopia

89, 11.179, 1.255



Tritanopia
89, 12.114, 333.354

Trichromacy



Original Color

89, 7.559, 3.957

Protanomaly

89, 3.940, 356.226

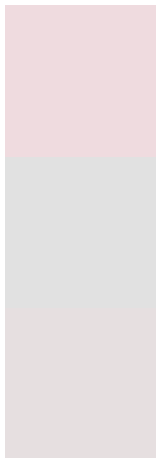
Deuteranomaly

89, 9.968, 1.910

Tritanomaly

89, 10.100, 341.974

Monochromacy



Original Color

89, 7.559, 3.957

Achromatopsia

90, 0.011, 296.813

Achromatomaly

89, 2.578, 7.737

CSS Examples

Text

The CSS property to change the color of the text to CIELCh 89, 7.559, 3.957 is called "color". The color property can be set on classes, ids or directly on the HTML element.

This example shows how text in the color `rgb(239, 219, 223)` looks like.

```
.text, #text, p{  
    color:rgb(239, 219, 223)  
}
```

If you want to add a text shadow in that color use the text-shadow property, you can generate a text shadow directly with our [CSS Text Shadow Generator](#).

Here you see how black text with a 4 pixel rgb(239, 219, 223) colored shadow looks like.

```
.shadow{ text-shadow: 4px 4px 2px rgb(239, 219, 223) }
```

Border

The CSS property to change the border of an element to CIELCh 89, 7.559, 3.957 is called "border". The border property can be set on classes, ids or directly on the HTML element.

This example shows the color as border, it can be applied via the CSS property "border" or "border-color".

```
.border, #border, table{ border:4px solid rgb(239, 219, 223) }
```

If only the border color should be changed use the property `border-color`.

```
.border{ border-color:rgb(239, 219, 223) }
```

If you want to add a box shadow in that color use:

Here you see how a box with a 4 pixel `rgb(239, 219, 223)` colored shadow looks like.

```
.boxshadow{ -moz-box-shadow:4px 4px 4px  
4px rgb(239, 219, 223); -webkit-box-  
shadow:4px 4px 4px 4px rgb(239, 219, 223);  
box-shadow:4px 4px 4px 4px rgb(239, 219,  
223) }
```

Background

The CSS property to change the background color of an element to CIELCh 89, 7.559, 3.957 is called "background". The background property can be set on classes, ids or directly on the HTML element.

```
.background, #background, body{  
background: rgb(239, 219, 223) }
```

If only the background color should be changed can be used:

```
.background{ background-color: rgb(239,  
219, 223) }
```

This example shows the color as background, it is applied via the CSS property "background".

To optimize and compress your CSS code, you can use our [online CSS compressor and optimizer](#) based on csstidy. If you want to create a linear or radial gradient as background or border, check our [CSS Gradient Generator](#).

Hey! You found this booklet interesting? Support Converting Colors with the new Membership Option!

The pro membership hides all ads, plus gives you double the colors in the color bucket, and more awesome pro features!

[Learn more, Memberships starting at \\$2.50/m!](#)

**Follow me
on Twitter!**

@ConvertingColor