

# Converting Colors

CIELCh(89, 7.895, 43.019)

Have a look what the booklet for  
CIELCh(89, 7.895, 43.019) contains.

<b>CIELCh(89, 7.651, 43.738)</b> .....	3
<i><b>Conversions</b></i> .....	4
<i><b>Details</b></i> .....	6
<i><b>Harmonies</b></i> .....	11
<i><b>Previews</b></i> .....	20
<i><b>Color Blindness Simulation</b></i> .....	23
<i><b>CSS Examples</b></i> .....	26

# Color

**CIELCh(89, 7.651, 43.738)**

# Conversions

## Conversions Part 1

Format	Color
Hex	EFDCD6
RGB	239, 220, 214
RGB Percent	94%, 86%, 84%
CMY	0.0639, 0.1384, 0.1620
CMYK	0.00, 0.08, 0.10, 0.06
HSL	14°, 43%, 89%
HSV	14°, 10%, 94%
XYZ	73.1054, 74.1641, 73.8785
YIQ	224.9970, 13.2500, 2.1620

# Conversions

## Conversions Part 2

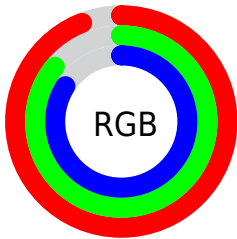
Format	Color
R <sub>Y</sub> B	239, 222, 214
Decimal	15719638
CIE Lab	89.00, 5.53, 5.29
CIE LCh	89, 7.651, 43.738
Yxy	74.1641, 0.3306, 0.3354
Android (android.graphics.Color)	4293909718 (0xFFEFD6)
YUV	224.9970, -5.4215, 12.2806
Hunter-Lab	86.1186, 0.8197, 9.4199

# Details

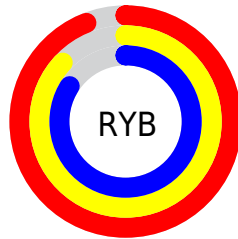
The CIELCh color  $89, 7.651, 43.738$  is a light color, and the websafe version is hex `CCCCCC`. A complement of this color would be  $91, 7.181, 224.826$ , and the grayscale version is  $89, 0.011, 296.813$ .

A 20% lighter version of the original color is  $100, 0.012, 296.813$ , and  $69, 7.767, 44.820$  is the 20% darker color. If you saturate the color by 10%, you get  $84, 15.579, 43.505$ , and if you desaturate by 10%, it is  $94, 0.328, 42.363$ .

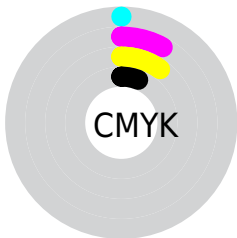
# Distribution



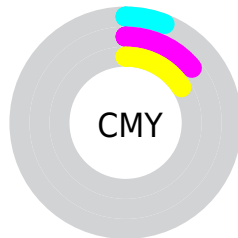
- Red (94%)
- Green (86%)
- Blue (84%)



- Red (94%)
- Yellow (87%)
- Blue (84%)



- Cyan (0%)
- Magenta (8%)
- Yellow (10%)
- Black (6%)



- Cyan (6%)
- Magenta (14%)
- Yellow (16%)

# Brightness & Saturation Gradients

These gradients show how the CIELCh color 89, 7.651, 43.738 changes by changing the brightness by 10 percent. The first figure shows a shift by +10% for each color and the second figure -10%.

Similar to the brightness gradients but the following saturation gradients show a change of the CIELCh color 89, 7.651, 43.738 by changing the saturation by 10% instead.





89, 7.651, 43.738

89, 7.651, 43.738

84, 15.579, 43.505

94, 0.328, 42.363

79, 24.168, 43.338

99, 5.606, 199.168

74, 33.456, 43.307

70, 43.445, 43.444

66, 54.070, 43.769

62, 65.136, 44.257

58, 76.169, 44.776

55, 86.103, 44.948

53, 93.243, 44.424

# Harmonies

# Complementary

The Complementary color scheme is a pair of colors which are on the opposite of each other on the color wheel.



89, 7.651, 43.738



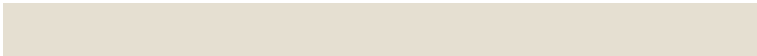
91, 7.181, 224.826

# Rectangle

The Rectangle color scheme consists of four colors that form a rectangle on the color wheel.



89, 7.651, 43.738



89, 7.651, 93.738



89, 7.651, 223.738



89, 7.651, 273.738

# Sweetspot

The Sweet Spot groups the original color and five complimentary colors.



89, 7.650, 43.758



98, 2.243, 43.827



88, 13.446, 332.370



52, 1.706, 43.857



0, 0.000, 0.000



53, 0.007, 296.813

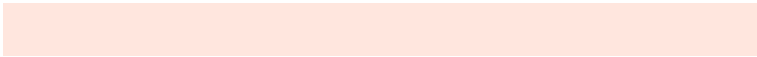


# Same Dimension

The Same Dimension uses a secret algorithm to generate beautiful new colors.



89, 7.650, 43.758



93, 10.126, 43.690



92, 9.738, 94.816



47, 4.149, 43.783



41, 76.140, 44.885



10, 25.631, 37.672





# Inverse Universe

The Inverse Universe completely reimagines the original color for something new.



91, 7.181, 224.826



96, 9.346, 224.965



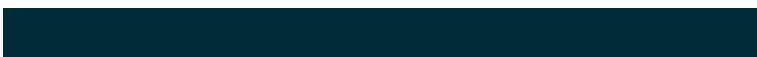
88, 9.802, 277.452



49, 3.920, 224.778



54, 35.375, 244.173

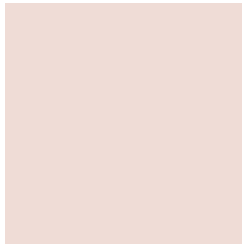


15, 15.040, 237.031



# Previews

## White Background



This preview shows how the CIE LCh color 89, 7.651, 43.738 looks on a white background.

## Color Contrast Check

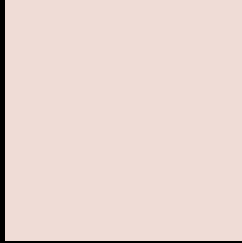
Large Text (above 18pt) WCAG AA × Fail

Any Text WCAG AA × Fail

Large Text (above 18pt) WCAG AAA × Fail

Any Text WCAG AAA × Fail

# Black Background



This preview shows how the CIELCh color 89, 7.651, 43.738 looks on a black background.

## Color Contrast Check

Large Text (above 18pt) WCAG AA ✓ Pass

Any Text WCAG AA ✓ Pass

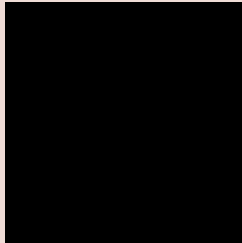
Large Text (above 18pt) WCAG AAA ✓ Pass

Any Text WCAG AAA ✓ Pass

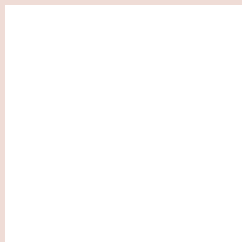
If you want to check with other color combinations, try the [Color Contrast Checker](#).

**CIELCh 89, 7.651, 43.738**

## **Background**



This preview shows how black text looks on a background with the CIELCh color 89, 7.651, 43.738.

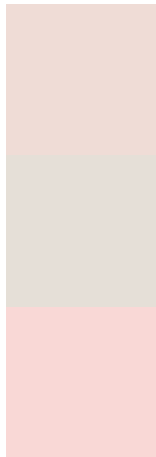


This preview shows how white text looks on a background with the CIELCh color 89, 7.651, 43.738.

# Color Blindness Simulation

Color vision deficiency is a very complex topic, and I could not describe the different causes any better than Wikipedia does, so if you want to learn more, you should check out their [article about color blindness](#).

## Dichromacy



### Original Color

89, 7.651, 43.738

### Protanopia

89, 4.674, 81.893

### Deuteranopia

89, 12.281, 25.062



**Tritanopia**  
89, 12.359, 334.600



# Trichromacy



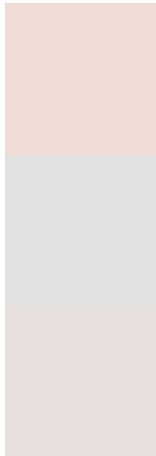
**Original Color**  
89, 7.651, 43.738

**Protanomaly**  
89, 5.403, 61.691

**Deuteranomaly**  
89, 10.472, 28.601

**Tritanomaly**  
89, 9.237, 349.637

# Monochromacy



**Original Color**  
89, 7.651, 43.738

**Achromatopsia**  
90, 0.011, 296.813

**Achromatomaly**  
89, 2.722, 41.745

# CSS Examples

## Text

The CSS property to change the color of the text to CIELCh 89, 7.651, 43.738 is called "color". The color property can be set on classes, ids or directly on the HTML element.

This example shows how text in the color `rgb(239, 220, 214)` looks like.

```
.text, #text, p{  
    color:rgb(239, 220, 214)  
}
```

If you want to add a text shadow in that color use the text-shadow property, you can generate a text shadow directly with our [CSS Text Shadow Generator](#).

Here you see how black text with a 4 pixel rgb(239, 220, 214) colored shadow looks like.

```
.shadow{ text-shadow: 4px 4px 2px rgb(239, 220, 214) }
```

## Border

The CSS property to change the border of an element to CIELCh 89, 7.651, 43.738 is called "border". The border property can be set on classes, ids or directly on the HTML element.

This example shows the color as border, it can be applied via the CSS property "border" or "border-color".

```
.border, #border, table{ border:4px solid rgb(239, 220, 214) }
```

If only the border color should be changed use the property border-color.

```
.border{ border-color:rgb(239, 220, 214) }
```

If you want to add a box shadow in that color use:

Here you see how a box with a 4 pixel rgb(239, 220, 214) colored shadow looks like.

```
.boxshadow{ -moz-box-shadow:4px 4px 4px  
4px rgb(239, 220, 214); -webkit-box-  
shadow:4px 4px 4px 4px rgb(239, 220, 214);  
box-shadow:4px 4px 4px 4px rgb(239, 220,  
214) }
```

# Background

The CSS property to change the background color of an element to CIELCh 89, 7.651, 43.738 is called "background". The background property can be set on classes, ids or directly on the HTML element.

```
.background, #background, body{  
background: rgb(239, 220, 214) }
```

If only the background color should be changed can be used:

```
.background{ background-color: rgb(239,  
220, 214) }
```

This example shows the color as background, it is applied via the CSS property "background".

To optimize and compress your CSS code, you can use our [online CSS compressor and optimizer](#) based on csstidy. If you want to create a linear or radial gradient as background or border, check our [CSS Gradient Generator](#).

Hey! You found this booklet interesting? Support Converting Colors with the new Membership Option!

The pro membership hides all ads, plus gives you double the colors in the color bucket, and more awesome pro features!

**[Learn more, Memberships starting at \\$2.50/m!](#)**

**Follow me  
on Twitter!**

@ConvertingColor