

Converting Colors

CIELCh(89, 8.230, 346.513)

Have a look what the booklet for
CIELCh(89, 8.230, 346.513) contains.

CIELCh(89, 8.035, 348.789)	3
<i>Conversions</i>	4
<i>Details</i>	6
<i>Harmonies</i>	12
<i>Previews</i>	21
<i>Color Blindness Simulation</i>	24
<i>CSS Examples</i>	27

Color

CIELCh(89, 8.035, 348.789)

Conversions

Conversions Part 1

Format	Color
Hex	EEDBE3
RGB	238, 219, 227
RGB Percent	93%, 86%, 89%
CMY	0.0678, 0.1423, 0.1110
CMYK	0.00, 0.08, 0.05, 0.07
HSL	335°, 35%, 89%
HSV	335°, 8%, 93%
XYZ	74.2380, 74.1641, 82.8607
YIQ	225.5930, 8.7560, 6.5160

Conversions

Conversions Part 2

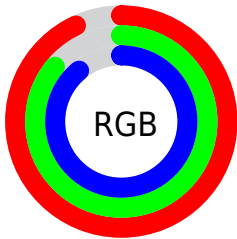
Format	Color
R_{YB}	238, 219, 227
Decimal	15653859
CIE Lab	89.00, 7.88, -1.56
CIE LCh	89, 8.035, 348.789
Yxy	74.1641, 0.3210, 0.3207
Android (android.graphics.Color)	4293843939 (0xFFEEDBE3)
YUV	225.5930, 0.6937, 10.8809
Hunter-Lab	86.1186, 3.1673, 3.2360

Details

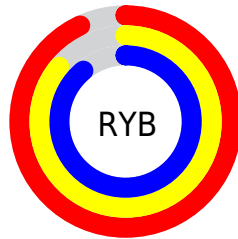
The CIELCh color **89, 8.035, 348.789** is a light color, and the websafe version is hex **CCCCCC**. A complement of this color would be **92, 7.910, 167.499**, and the grayscale version is **90, 0.011, 296.813**.

A 20% lighter version of the original color is **100, 0.012, 296.813**, and **69, 8.144, 347.570** is the 20% darker color. If you saturate the color by 10%, you get **83, 18.342, 349.821**, and if you desaturate by 10%, it is **95, 1.979, 168.226**.

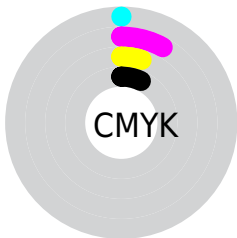
Distribution



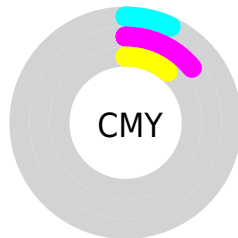
- Red (93%)
- Green (86%)
- Blue (89%)



- Red (93%)
- Yellow (86%)
- Blue (89%)



- Cyan (0%)
- Magenta (8%)
- Yellow (5%)
- Black (7%)



- Cyan (7%)
- Magenta (14%)
- Yellow (11%)

Brightness & Saturation Gradients

These gradients show how the CIELCh color 89, 8.035, 348.789 changes by changing the brightness by 10 percent. The first figure shows a shift by +10% for each color and the second figure -10%.

Similar to the brightness gradients but the following saturation gradients show a change of the CIELCh color 89, 8.035, 348.789 by changing the saturation by 10% instead.

 89, 8.035, 348.789

 89, 8.035, 348.789

 100, 8.035,
348.789

 79, 8.035, 348.789

 69, 8.035, 348.789

 59, 8.035, 348.789

 49, 8.035, 348.789

 39, 8.035, 348.789

 29, 8.035, 348.789

 19, 8.035, 348.789

 9, 8.035, 348.789

 0, 8.035, 348.789

89, 8.035, 348.789

89, 8.035, 348.789

83, 18.342,
349.821

95, 1.979, 168.226

77, 28.833,
350.960

99, 5.968, 195.378

99, 5.941, 199.141

71, 39.306,
352.276

66, 49.449,
353.833

61, 58.829,
355.725

57, 66.924,
358.080

54, 73.228, 1.060

52, 77.458, 4.849

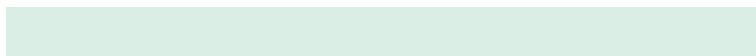
Harmonies

Complementary

The Complementary color scheme is a pair of colors which are on the opposite of each other on the color wheel.



89, 8.035, 348.789



92, 7.910, 167.499

Rectangle

The Rectangle color scheme consists of four colors that form a rectangle on the color wheel.



89, 8.035, 348.789



89, 8.035, 38.789



89, 8.035, 168.789



89, 8.035, 218.789

Sweetspot

The Sweet Spot groups the original color and five complimentary colors.



89, 8.033, 348.796



99, 2.113, 348.072



89, 10.657, 311.688



53, 1.201, 348.050



0, 0.000, 0.000



53, 0.007, 296.813

Same Dimension

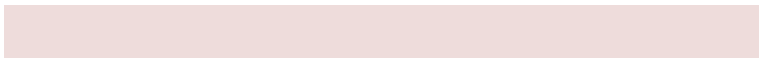
The Same Dimension uses a secret algorithm to generate beautiful new colors.



89, 8.033, 348.796



93, 10.676, 349.002



89, 6.499, 25.562



47, 5.764, 348.946



39, 66.068, 9.609



8, 28.914, 1.832

Inverse Universe

The Inverse Universe completely reimagines the original color for something new.



89, 8.033, 348.796



93, 10.676, 349.002



92, 6.173, 205.196



47, 5.764, 348.946



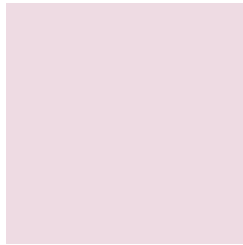
39, 66.068, 9.609



8, 28.914, 1.832

Previews

White Background



This preview shows how the CIELCh color 89, 8.035, 348.789 looks on a white background.

Color Contrast Check

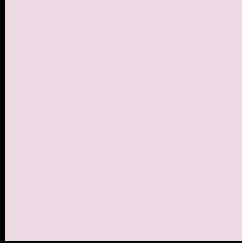
Large Text (above 18pt) WCAG AA × Fail

Any Text WCAG AA × Fail

Large Text (above 18pt) WCAG AAA × Fail

Any Text WCAG AAA × Fail

Black Background



This preview shows how the CIE LCh color 89, 8.035, 348.789 looks on a black background.

Color Contrast Check

Large Text (above 18pt) WCAG AA ✓ Pass

Any Text WCAG AA ✓ Pass

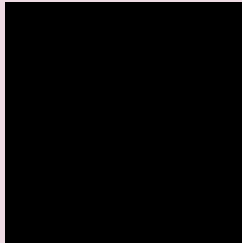
Large Text (above 18pt) WCAG AAA ✓ Pass

Any Text WCAG AAA ✓ Pass

If you want to check with other color combinations, try the [Color Contrast Checker](#).

CIELCh 89, 8.035, 348.789

Background



This preview shows how black text looks on a background with the CIELCh color 89, 8.035, 348.789.

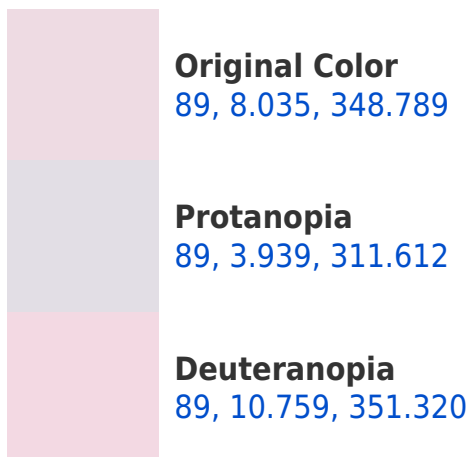


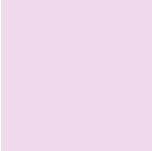
This preview shows how white text looks on a background with the CIELCh color 89, 8.035, 348.789.

Color Blindness Simulation

Color vision deficiency is a very complex topic, and I could not describe the different causes any better than Wikipedia does, so if you want to learn more, you should check out their [article about color blindness](#).

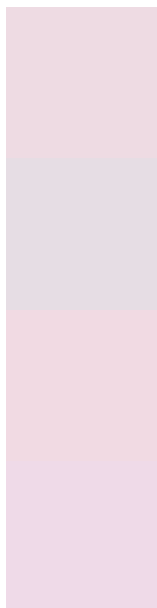
Dichromacy





Tritanopia
89, 12.264, 330.440

Trichromacy



Original Color
89, 8.035, 348.789

Protanomaly
89, 4.893, 331.493

Deuteranomaly
89, 9.552, 350.779

Tritanomaly
89, 10.504, 336.250

Monochromacy



Original Color
89, 8.035, 348.789

Achromatopsia
90, 0.011, 296.813

Achromatomaly
89, 2.974, 347.792

CSS Examples

Text

The CSS property to change the color of the text to CIELCh 89, 8.035, 348.789 is called "color". The color property can be set on classes, ids or directly on the HTML element.

This example shows how text in the color `rgb(238, 219, 227)` looks like.

```
.text, #text, p{  
    color:rgb(238, 219, 227)  
}
```

If you want to add a text shadow in that color use the text-shadow property, you can generate a text shadow directly with our [CSS Text Shadow Generator](#).

Here you see how black text with a 4 pixel rgb(238, 219, 227) colored shadow looks like.

```
.shadow{ text-shadow: 4px 4px 2px rgb(238, 219, 227) }
```

Border

The CSS property to change the border of an element to CIELCh 89, 8.035, 348.789 is called "border". The border property can be set on classes, ids or directly on the HTML element.

This example shows the color as border, it can be applied via the CSS property "border" or "border-color".

```
.border, #border, table{ border:4px solid rgb(238, 219, 227) }
```

If only the border color should be changed use the property `border-color`.

```
.border{ border-color:rgb(238, 219, 227) }
```

If you want to add a box shadow in that color use:

Here you see how a box with a 4 pixel `rgb(238, 219, 227)` colored shadow looks like.

```
.boxshadow{ -moz-box-shadow:4px 4px 4px  
4px rgb(238, 219, 227); -webkit-box-  
shadow:4px 4px 4px 4px rgb(238, 219, 227);  
box-shadow:4px 4px 4px 4px rgb(238, 219,  
227) }
```

Background

The CSS property to change the background color of an element to CIELCh 89, 8.035, 348.789 is called "background". The background property can be set on classes, ids or directly on the HTML element.

```
.background, #background, body{  
background: rgb(238, 219, 227) }
```

If only the background color should be changed can be used:

```
.background{ background-color: rgb(238,  
219, 227) }
```

This example shows the color as background, it is applied via the CSS property "background".

To optimize and compress your CSS code, you can use our [online CSS compressor and optimizer](#) based on csstidy. If you want to create a linear or radial gradient as background or border, check our [CSS Gradient Generator](#).

Hey! You found this booklet interesting? Support Converting Colors with the new Membership Option!

The pro membership hides all ads, plus gives you double the colors in the color bucket, and more awesome pro features!

[Learn more, Memberships starting at \\$2.50/m!](#)

**Follow me
on Twitter!**

@ConvertingColor