

Converting Colors

CIELCh(89, 8.256, 14.013)

Have a look what the booklet for
CIELCh(89, 8.256, 14.013) contains.

CIELCh(89, 8.464, 12.926)	3
<i>Conversions</i>	4
<i>Details</i>	6
<i>Harmonies</i>	11
<i>Previews</i>	20
<i>Color Blindness Simulation</i>	23
<i>CSS Examples</i>	26

Color

CIELCh(89, 8.464, 12.926)

Conversions

Conversions Part 1

Format	Color
Hex	F1DADC
RGB	241, 218, 220
RGB Percent	95%, 85%, 86%
CMY	0.0541, 0.1443, 0.1364
CMYK	0.00, 0.10, 0.09, 0.05
HSL	355°, 45%, 90%
HSV	355°, 10%, 95%
XYZ	74.4161, 74.1641, 78.2449
YIQ	225.1050, 13.0660, 5.4980

Conversions

Conversions Part 2

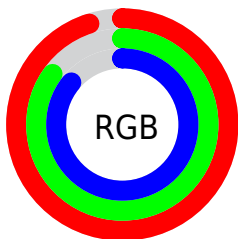
Format	Color
R _Y B	241, 218, 220
Decimal	15850204
CIE Lab	89.00, 8.25, 1.89
CIE LCh	89, 8.464, 12.926
Yxy	74.1641, 0.3281, 0.3270
Android (android.graphics.Color)	4294040284 (0xFFFF1DADC)
YUV	225.1050, -2.5168, 13.9399
Hunter-Lab	86.1186, 3.5364, 6.4138

Details

The CIELCh color **89, 8.464, 12.926** is a light color, and the websafe version is hex **CCCCCC**. A complement of this color would be **94, 8.043, 191.587**, and the grayscale version is **90, 0.011, 296.813**.

A 20% lighter version of the original color is **100, 0.012, 296.813**, and **69, 8.575, 12.822** is the 20% darker color. If you saturate the color by 10%, you get **83, 17.930, 13.974**, and if you desaturate by 10%, it is **96, 0.396, 193.761**.

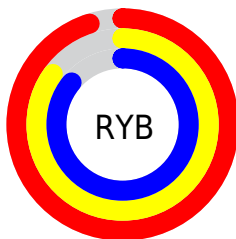
Distribution



Red (95%)

Green (85%)

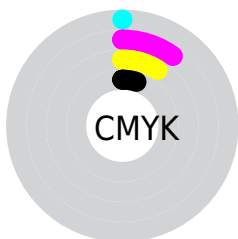
Blue (86%)



Red (95%)

Yellow (85%)

Blue (86%)

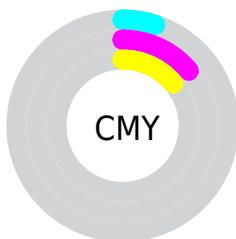


Cyan (0%)

Magenta (10%)

Yellow (9%)

Black (5%)



Cyan (5%)

Magenta (14%)

Yellow (14%)

Brightness & Saturation Gradients

These gradients show how the CIELCh color 89, 8.464, 12.926 changes by changing the brightness by 10 percent. The first figure shows a shift by +10% for each color and the second figure -10%.

Similar to the brightness gradients but the following saturation gradients show a change of the CIELCh color 89, 8.464, 12.926 by changing the saturation by 10% instead.



89, 8.464, 12.926

89, 8.464, 12.926

83, 17.930, 13.974

96, 0.396, 193.761

76, 27.985, 15.223

99, 4.752, 199.244

71, 38.537, 16.787

65, 49.401, 18.777

60, 60.289, 21.323

56, 70.836, 24.548

53, 80.665, 28.491

51, 89.386, 32.928

50, 96.347, 37.036

Harmonies

Complementary

The Complementary color scheme is a pair of colors which are on the opposite of each other on the color wheel.



89, 8.464, 12.926



94, 8.043, 191.587

Rectangle

The Rectangle color scheme consists of four colors that form a rectangle on the color wheel.



89, 8.464, 12.926



89, 8.464, 62.926



89, 8.464, 192.926



89, 8.464, 242.926

Sweetspot

The Sweet Spot groups the original color and five complimentary colors.



89, 8.462, 12.939



98, 2.725, 12.225



89, 14.082, 322.161



52, 2.071, 12.340



0, 0.000, 0.000



53, 0.007, 296.813

Same Dimension

The Same Dimension uses a secret algorithm to generate beautiful new colors.



89, 8.462, 12.939



93, 10.265, 13.086



91, 6.920, 62.848



47, 5.016, 12.933



38, 78.066, 36.476



8, 29.406, 20.297

Inverse Universe

The Inverse Universe completely reimagines the original color for something new.



89, 8.462, 12.939



93, 10.265, 13.086



91, 6.662, 245.041



47, 5.016, 12.933



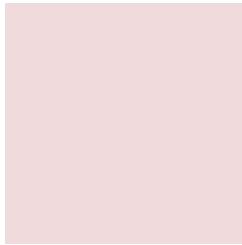
38, 78.066, 36.476



8, 29.406, 20.297

Previews

White Background



This preview shows how the CIELCh color 89, 8.464, 12.926 looks on a white background.

Color Contrast Check

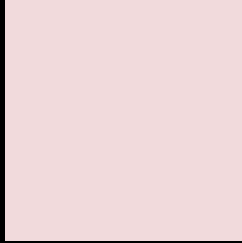
Large Text (above 18pt) WCAG AA × Fail

Any Text WCAG AA × Fail

Large Text (above 18pt) WCAG AAA × Fail

Any Text WCAG AAA × Fail

Black Background



This preview shows how the CIELCh color 89, 8.464, 12.926 looks on a black background.

Color Contrast Check

Large Text (above 18pt) WCAG AA ✓ Pass

Any Text WCAG AA ✓ Pass

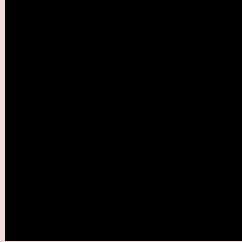
Large Text (above 18pt) WCAG AAA ✓ Pass

Any Text WCAG AAA ✓ Pass

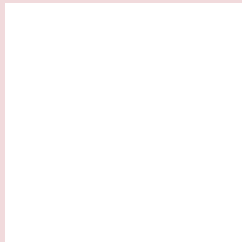
If you want to check with other color combinations, try the [Color Contrast Checker](#).

CIELCh 89, 8.464, 12.926

Background



This preview shows how black text looks on a background with the CIELCh color 89, 8.464, 12.926.

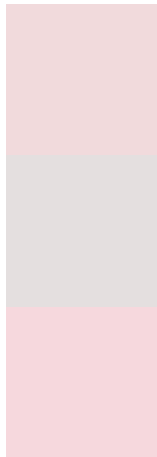


This preview shows how white text looks on a background with the CIELCh color 89, 8.464, 12.926.

Color Blindness Simulation

Color vision deficiency is a very complex topic, and I could not describe the different causes any better than Wikipedia does, so if you want to learn more, you should check out their [article about color blindness](#).

Dichromacy



Original Color

89, 8.464, 12.926

Protanopia

89, 1.798, 19.200

Deuteranopia

89, 11.276, 6.923



Tritanopia
89, 13.139, 338.072

Trichromacy



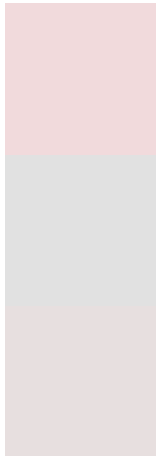
Original Color
89, 8.464, 12.926

Protanomaly
89, 4.376, 12.775

Deuteranomaly
89, 10.082, 8.239

Tritanomaly
89, 10.702, 347.893

Monochromacy



Original Color
89, 8.464, 12.926

Achromatopsia
90, 0.011, 296.813

Achromatomaly
89, 2.884, 19.402

CSS Examples

Text

The CSS property to change the color of the text to CIELCh 89, 8.464, 12.926 is called "color". The color property can be set on classes, ids or directly on the HTML element.

This example shows how text in the color `rgb(241, 218, 220)` looks like.

```
.text, #text, p{  
    color:rgb(241, 218, 220)  
}
```

If you want to add a text shadow in that color use the text-shadow property, you can generate a text shadow directly with our [CSS Text Shadow Generator](#).

Here you see how black text with a 4 pixel rgb(241, 218, 220) colored shadow looks like.

```
.shadow{ text-shadow: 4px 4px 2px rgb(241, 218, 220) }
```

Border

The CSS property to change the border of an element to CIELCh 89, 8.464, 12.926 is called "border". The border property can be set on classes, ids or directly on the HTML element.

This example shows the color as border, it can be applied via the CSS property "border" or "border-color".

```
.border, #border, table{ border:4px solid rgb(241, 218, 220) }
```

If only the border color should be changed use the property border-color.

```
.border{ border-color:rgb(241, 218, 220) }
```

If you want to add a box shadow in that color use:

Here you see how a box with a 4 pixel rgb(241, 218, 220) colored shadow looks like.

```
.boxshadow{ -moz-box-shadow:4px 4px 4px  
4px rgb(241, 218, 220); -webkit-box-  
shadow:4px 4px 4px 4px rgb(241, 218, 220);  
box-shadow:4px 4px 4px 4px rgb(241, 218,  
220) }
```

Background

The CSS property to change the background color of an element to CIELCh 89, 8.464, 12.926 is called "background". The background property can be set on classes, ids or directly on the HTML element.

```
.background, #background, body{  
background: rgb(241, 218, 220) }
```

If only the background color should be changed can be used:

```
.background{ background-color: rgb(241,  
218, 220) }
```

This example shows the color as background, it is applied via the CSS property "background".

To optimize and compress your CSS code, you can use our [online CSS compressor and optimizer](#) based on csstidy. If you want to create a linear or radial gradient as background or border, check our [CSS Gradient Generator](#).

Hey! You found this booklet interesting? Support Converting Colors with the new Membership Option!

The pro membership hides all ads, plus gives you double the colors in the color bucket, and more awesome pro features!

[Learn more, Memberships starting at \\$2.50/m!](#)

**Follow me
on Twitter!**

@ConvertingColor