

Converting Colors

CIELCh(89, 8.445, 31.578)

Have a look what the booklet for
CIELCh(89, 8.445, 31.578) contains.

CIELCh(89, 8.358, 34.231)	3
<i>Conversions</i>	4
<i>Details</i>	6
<i>Harmonies</i>	11
<i>Previews</i>	20
<i>Color Blindness Simulation</i>	23
<i>CSS Examples</i>	26

Color

CIELCh(89, 8.358, 34.231)

Conversions

Conversions Part 1

Format	Color
Hex	F1DBD7
RGB	241, 219, 215
RGB Percent	95%, 86%, 84%
CMY	0.0555, 0.1417, 0.1574
CMYK	0.00, 0.09, 0.11, 0.06
HSL	9°, 48%, 89%
HSV	9°, 11%, 94%
XYZ	73.7691, 74.1641, 74.6225
YIQ	225.1220, 14.3960, 3.4200

Conversions

Conversions Part 2

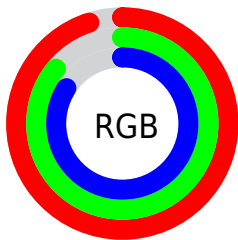
Format	Color
R _Y B	241, 220, 215
Decimal	15850455
CIE Lab	89.00, 6.91, 4.70
CIE LCh	89, 8.358, 34.231
Yxy	74.1641, 0.3315, 0.3332
Android (android.graphics.Color)	4294040535 (0xFFFF1DBD7)
YUV	225.1220, -4.9901, 13.9250
Hunter-Lab	86.1186, 2.1954, 8.9077

Details

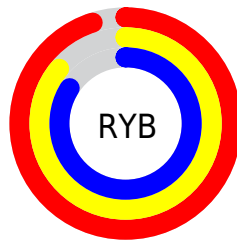
The CIELCh color **89, 8.358, 34.231** is a light color, and the websafe version is hex **CCCCCC**. A complement of this color would be **92, 7.791, 214.449**, and the grayscale version is **90, 0.011, 296.813**.

A 20% lighter version of the original color is **100, 0.012, 296.813**, and **69, 8.497, 34.912** is the 20% darker color. If you saturate the color by 10%, you get **83, 16.791, 34.446**, and if you desaturate by 10%, it is **95, 0.588, 33.210**.

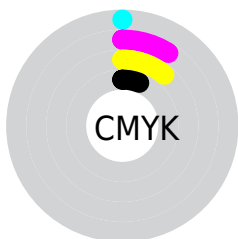
Distribution



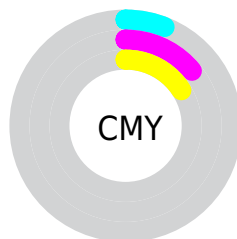
- Red (95%)
- Green (86%)
- Blue (84%)



- Red (95%)
- Yellow (86%)
- Blue (84%)



- Cyan (0%)
- Magenta (9%)
- Yellow (11%)
- Black (6%)

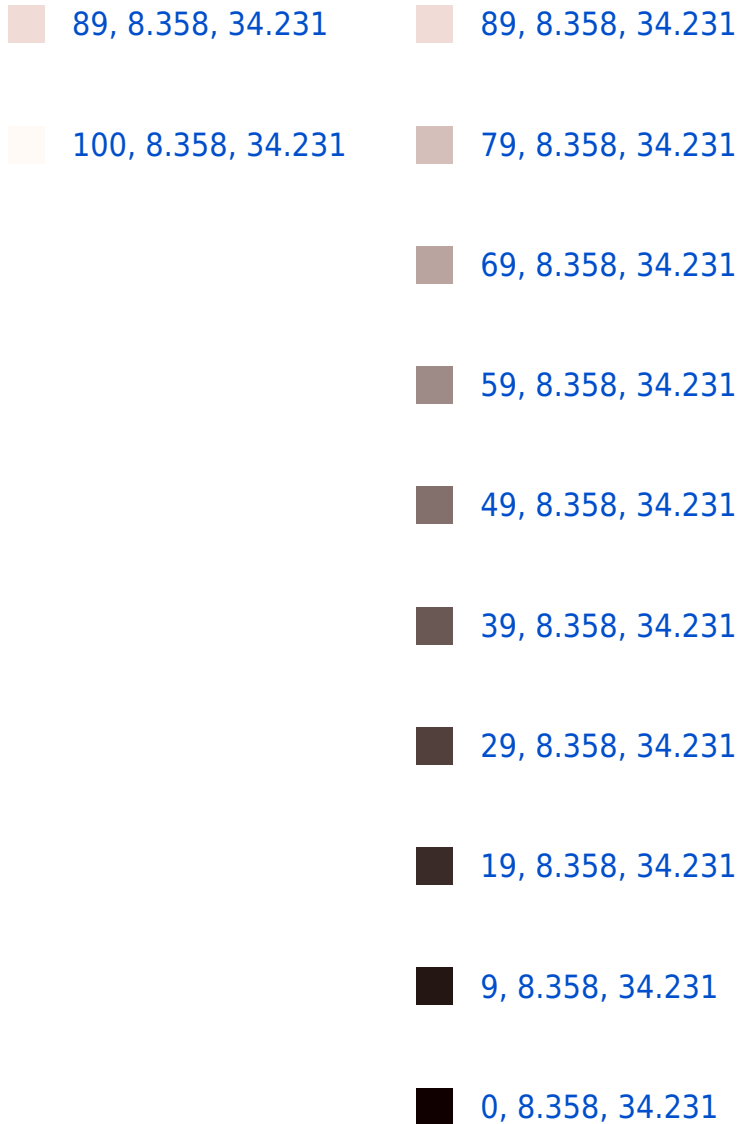


- Cyan (6%)
- Magenta (14%)
- Yellow (16%)

Brightness & Saturation Gradients

These gradients show how the CIELCh color 89, 8.358, 34.231 changes by changing the brightness by 10 percent. The first figure shows a shift by +10% for each color and the second figure -10%.

Similar to the brightness gradients but the following saturation gradients show a change of the CIELCh color 89, 8.358, 34.231 by changing the saturation by 10% instead.



89, 8.358, 34.231

89, 8.358, 34.231

83, 16.791, 34.446

95, 0.588, 33.210

78, 25.940, 34.781

99, 4.871, 199.233

73, 35.822, 35.319

68, 46.411, 36.114

64, 57.598, 37.209

60, 69.138, 38.601

56, 80.508, 40.160

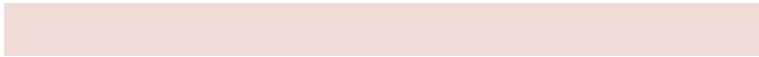
54, 90.544, 41.445

52, 97.184, 41.930

Harmonies

Complementary

The Complementary color scheme is a pair of colors which are on the opposite of each other on the color wheel.



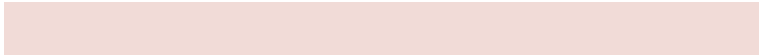
89, 8.358, 34.231



92, 7.791, 214.449

Rectangle

The Rectangle color scheme consists of four colors that form a rectangle on the color wheel.



89, 8.358, 34.231



89, 8.358, 84.231



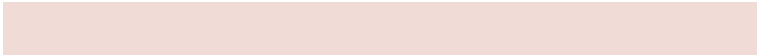
89, 8.358, 214.231



89, 8.358, 264.231

Sweetspot

The Sweet Spot groups the original color and five complimentary colors.



89, 8.357, 34.248



98, 2.355, 34.006



89, 14.813, 329.469



52, 1.791, 34.067



0, 0.000, 0.000



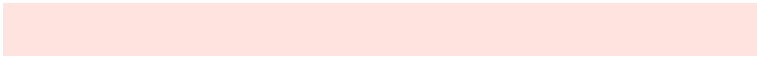
53, 0.007, 296.813

Same Dimension

The Same Dimension uses a secret algorithm to generate beautiful new colors.



89, 8.357, 34.248



92, 10.642, 34.286



92, 9.308, 88.378



47, 4.358, 34.226



40, 78.904, 42.260



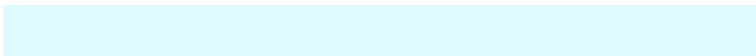
9, 26.884, 32.395

Inverse Universe

The Inverse Universe completely reimagines the original color for something new.



92, 7.791, 214.449



96, 9.767, 214.470



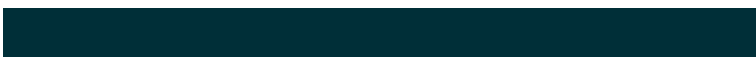
89, 9.280, 271.247



49, 4.100, 214.443



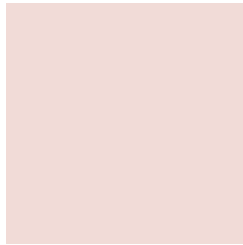
59, 34.037, 225.512



17, 14.940, 220.928

Previews

White Background



This preview shows how the CIELCh color 89, 8.358, 34.231 looks on a white background.

Color Contrast Check

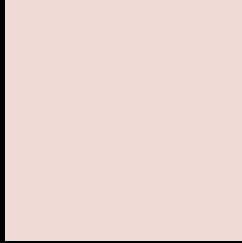
Large Text (above 18pt) WCAG AA × Fail

Any Text WCAG AA × Fail

Large Text (above 18pt) WCAG AAA × Fail

Any Text WCAG AAA × Fail

Black Background



This preview shows how the CIE LCh color 89, 8.358, 34.231 looks on a black background.

Color Contrast Check

Large Text (above 18pt) WCAG AA ✓ Pass

Any Text WCAG AA ✓ Pass

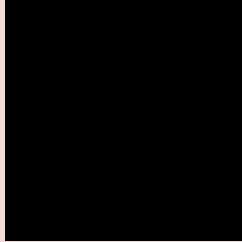
Large Text (above 18pt) WCAG AAA ✓ Pass

Any Text WCAG AAA ✓ Pass

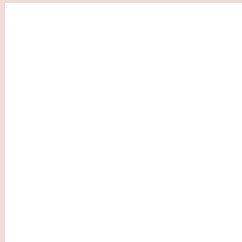
If you want to check with other color combinations, try the [Color Contrast Checker](#).

CIELCh 89, 8.358, 34.231

Background



This preview shows how black text looks on a background with the CIELCh color 89, 8.358, 34.231.

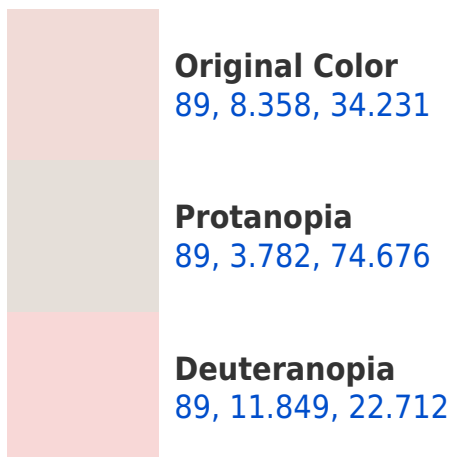


This preview shows how white text looks on a background with the CIELCh color 89, 8.358, 34.231.

Color Blindness Simulation

Color vision deficiency is a very complex topic, and I could not describe the different causes any better than Wikipedia does, so if you want to learn more, you should check out their [article about color blindness](#).

Dichromacy





Tritanopia
89, 13.139, 338.072

Trichromacy



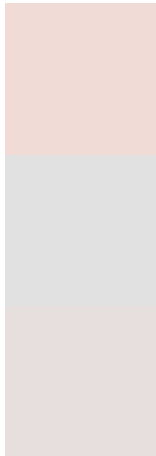
Original Color
89, 8.358, 34.231

Protanomaly
89, 5.079, 50.257

Deuteranomaly
89, 10.389, 25.800

Tritanomaly
89, 10.202, 352.862

Monochromacy



Original Color
89, 8.358, 34.231

Achromatopsia
90, 0.011, 296.813

Achromatomaly
89, 3.063, 39.191

CSS Examples

Text

The CSS property to change the color of the text to CIELCh 89, 8.358, 34.231 is called "color". The color property can be set on classes, ids or directly on the HTML element.

This example shows how text in the color `rgb(241, 219, 215)` looks like.

```
.text, #text, p{  
    color:rgb(241, 219, 215)  
}
```

If you want to add a text shadow in that color use the text-shadow property, you can generate a text shadow directly with our [CSS Text Shadow Generator](#).

Here you see how black text with a 4 pixel rgb(241, 219, 215) colored shadow looks like.

```
.shadow{ text-shadow: 4px 4px 2px rgb(241, 219, 215) }
```

Border

The CSS property to change the border of an element to CIELCh 89, 8.358, 34.231 is called "border". The border property can be set on classes, ids or directly on the HTML element.

This example shows the color as border, it can be applied via the CSS property "border" or "border-color".

```
.border, #border, table{ border:4px solid rgb(241, 219, 215) }
```

If only the border color should be changed use the property `border-color`.

```
.border{ border-color:rgb(241, 219, 215) }
```

If you want to add a box shadow in that color use:

Here you see how a box with a 4 pixel `rgb(241, 219, 215)` colored shadow looks like.

```
.boxshadow{ -moz-box-shadow:4px 4px 4px  
4px rgb(241, 219, 215); -webkit-box-  
shadow:4px 4px 4px 4px rgb(241, 219, 215);  
box-shadow:4px 4px 4px 4px rgb(241, 219,  
215) }
```

Background

The CSS property to change the background color of an element to CIELCh 89, 8.358, 34.231 is called "background". The background property can be set on classes, ids or directly on the HTML element.

```
.background, #background, body{  
background: rgb(241, 219, 215) }
```

If only the background color should be changed can be used:

```
.background{ background-color: rgb(241,  
219, 215) }
```

This example shows the color as background, it is applied via the CSS property "background".

To optimize and compress your CSS code, you can use our [online CSS compressor and optimizer](#) based on csstidy. If you want to create a linear or radial gradient as background or border, check our [CSS Gradient Generator](#).

Hey! You found this booklet interesting? Support Converting Colors with the new Membership Option!

The pro membership hides all ads, plus gives you double the colors in the color bucket, and more awesome pro features!

[Learn more, Memberships starting at \\$2.50/m!](#)

**Follow me
on Twitter!**

@ConvertingColor