

Converting Colors

CIELCh(89, 9.133, 45.907)

Have a look what the booklet for
CIELCh(89, 9.133, 45.907) contains.

CIELCh(89, 9.150, 46.767)	3
<i>Conversions</i>	4
<i>Details</i>	6
<i>Harmonies</i>	11
<i>Previews</i>	20
<i>Color Blindness Simulation</i>	23
<i>CSS Examples</i>	26

Color

CIELCh(89, 9.150, 46.767)

Conversions

Conversions Part 1

Format	Color
Hex	F1DBD3
RGB	241, 219, 211
RGB Percent	95%, 86%, 83%
CMY	0.0544, 0.1406, 0.1720
CMYK	0.00, 0.09, 0.12, 0.05
HSL	16°, 52%, 89%
HSV	16°, 12%, 95%
XYZ	73.4600, 74.1641, 72.1557
YIQ	224.6660, 15.6800, 2.1760

Conversions

Conversions Part 2

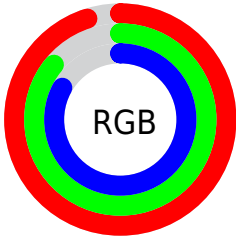
Format	Color
R _Y B	241, 222, 211
Decimal	15850451
CIE Lab	89.00, 6.27, 6.67
CIE LCh	89, 9.150, 46.767
Yxy	74.1641, 0.3342, 0.3374
Android (android.graphics.Color)	4294040531 (0xFFF1DBD3)
YUV	224.6660, -6.7373, 14.3249
Hunter-Lab	86.1186, 1.5547, 10.6060

Details

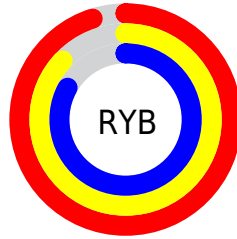
The CIELCh color $89, 9.150, 46.767$ is a light color, and the websafe version is hex `CCCCCC`. A complement of this color would be $91, 8.503, 228.324$, and the grayscale version is $89, 0.011, 296.813$.

A 20% lighter version of the original color is $100, 0.012, 296.813$, and $69, 9.116, 44.757$ is the 20% darker color. If you saturate the color by 10%, you get $84, 17.176, 46.402$, and if you desaturate by 10%, it is $94, 1.725, 46.992$.

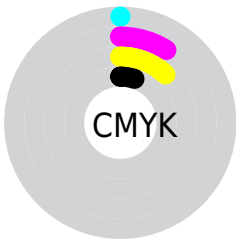
Distribution



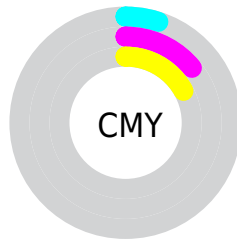
- Red (95%)
- Green (86%)
- Blue (83%)



- Red (95%)
- Yellow (87%)
- Blue (83%)



- Cyan (0%)
- Magenta (9%)
- Yellow (12%)
- Black (5%)



- Cyan (5%)
- Magenta (14%)
- Yellow (17%)

Brightness & Saturation Gradients

These gradients show how the CIELCh color 89, 9.150, 46.767 changes by changing the brightness by 10 percent. The first figure shows a shift by +10% for each color and the second figure -10%.

Similar to the brightness gradients but the following saturation gradients show a change of the CIELCh color 89, 9.150, 46.767 by changing the saturation by 10% instead.



89, 9.150, 46.767

89, 9.150, 46.767

84, 17.176, 46.402

94, 1.725, 46.992

79, 25.859, 46.102

99, 4.606, 202.466

75, 35.233, 45.926

99, 4.777, 199.241

70, 45.295, 45.900

66, 55.964, 46.030

62, 67.008, 46.270

59, 77.868, 46.452

56, 87.319, 46.144

54, 92.777, 45.428

Harmonies

Complementary

The Complementary color scheme is a pair of colors which are on the opposite of each other on the color wheel.



89, 9.150, 46.767



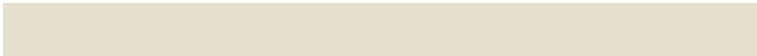
91, 8.503, 228.324

Rectangle

The Rectangle color scheme consists of four colors that form a rectangle on the color wheel.



89, 9.150, 46.767



89, 9.150, 96.767



89, 9.150, 226.767



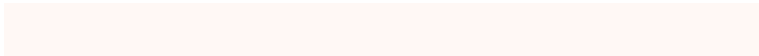
89, 9.150, 276.767

Sweetspot

The Sweet Spot groups the original color and five complimentary colors.



89, 9.149, 46.784



98, 2.976, 47.048



88, 15.754, 333.783



52, 2.122, 47.044



0, 0.000, 0.000



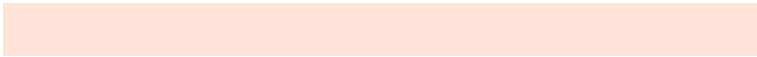
53, 0.007, 296.813

Same Dimension

The Same Dimension uses a secret algorithm to generate beautiful new colors.



89, 9.149, 46.784



92, 11.661, 46.680



93, 12.092, 96.847



48, 4.109, 46.901



42, 75.150, 45.946



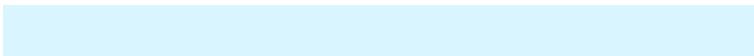
10, 25.262, 39.578

Inverse Universe

The Inverse Universe completely reimagines the original color for something new.



91, 8.503, 228.324



95, 10.657, 228.515



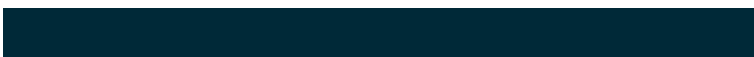
87, 12.224, 279.916



48, 3.891, 228.131



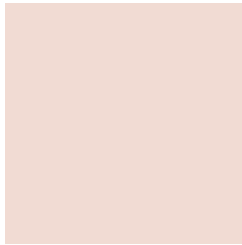
53, 36.469, 249.653



15, 15.293, 241.968

Previews

White Background



This preview shows how the CIELCh color 89, 9.150, 46.767 looks on a white background.

Color Contrast Check

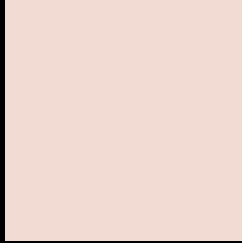
Large Text (above 18pt) WCAG AA × Fail

Any Text WCAG AA × Fail

Large Text (above 18pt) WCAG AAA × Fail

Any Text WCAG AAA × Fail

Black Background



This preview shows how the CIELCh color 89, 9.150, 46.767 looks on a black background.

Color Contrast Check

Large Text (above 18pt) WCAG AA ✓ Pass

Any Text WCAG AA ✓ Pass

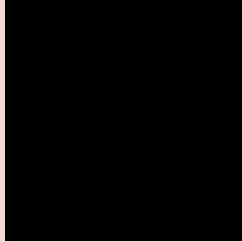
Large Text (above 18pt) WCAG AAA ✓ Pass

Any Text WCAG AAA ✓ Pass

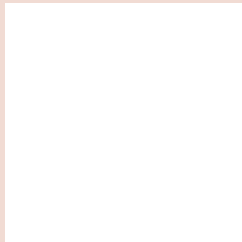
If you want to check with other color combinations, try the [Color Contrast Checker](#).

CIELCh 89, 9.150, 46.767

Background



This preview shows how black text looks on a background with the CIELCh color 89, 9.150, 46.767.

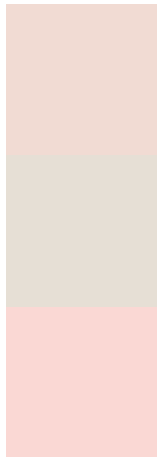


This preview shows how white text looks on a background with the CIELCh color 89, 9.150, 46.767.

Color Blindness Simulation

Color vision deficiency is a very complex topic, and I could not describe the different causes any better than Wikipedia does, so if you want to learn more, you should check out their [article about color blindness](#).

Dichromacy



Original Color


89, 9.150, 46.767

Protanopia

89, 5.769, 83.340

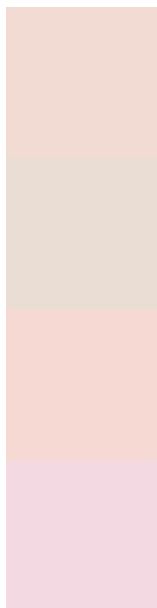
Deuteranopia

89, 12.833, 29.516



Tritanopia
89, 13.406, 339.143

Trichromacy



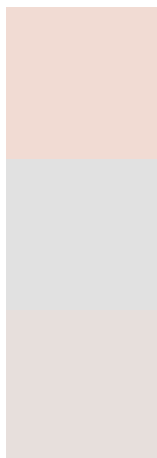
Original Color
89, 9.150, 46.767

Protanomaly
89, 6.797, 69.191

Deuteranomaly
89, 11.451, 33.168

Tritanomaly
89, 10.318, 356.409

Monochromacy



Original Color
89, 9.150, 46.767

Achromatopsia
90, 0.011, 296.813

Achromatomaly
89, 3.275, 47.758

CSS Examples

Text

The CSS property to change the color of the text to CIELCh 89, 9.150, 46.767 is called "color". The color property can be set on classes, ids or directly on the HTML element.

This example shows how text in the color `rgb(241, 219, 211)` looks like.

```
.text, #text, p{  
    color:rgb(241, 219, 211)  
}
```

If you want to add a text shadow in that color use the text-shadow property, you can generate a text shadow directly with our [CSS Text Shadow Generator](#).

Here you see how black text with a 4 pixel rgb(241, 219, 211) colored shadow looks like.

```
.shadow{ text-shadow: 4px 4px 2px rgb(241, 219, 211) }
```

Border

The CSS property to change the border of an element to CIELCh 89, 9.150, 46.767 is called "border". The border property can be set on classes, ids or directly on the HTML element.

This example shows the color as border, it can be applied via the CSS property "border" or "border-color".

```
.border, #border, table{ border:4px solid rgb(241, 219, 211) }
```

If only the border color should be changed use the property `border-color`.

```
.border{ border-color:rgb(241, 219, 211) }
```

If you want to add a box shadow in that color use:

Here you see how a box with a 4 pixel `rgb(241, 219, 211)` colored shadow looks like.

```
.boxshadow{ -moz-box-shadow:4px 4px 4px  
4px rgb(241, 219, 211); -webkit-box-  
shadow:4px 4px 4px 4px rgb(241, 219, 211);  
box-shadow:4px 4px 4px 4px rgb(241, 219,  
211) }
```

Background

The CSS property to change the background color of an element to CIELCh 89, 9.150, 46.767 is called "background". The background property can be set on classes, ids or directly on the HTML element.

```
.background, #background, body{  
background: rgb(241, 219, 211) }
```

If only the background color should be changed can be used:

```
.background{ background-color: rgb(241,  
219, 211) }
```

This example shows the color as background, it is applied via the CSS property "background".

To optimize and compress your CSS code, you can use our [online CSS compressor and optimizer](#) based on csstidy. If you want to create a linear or radial gradient as background or border, check our [CSS Gradient Generator](#).

Hey! You found this booklet interesting? Support Converting Colors with the new Membership Option!

The pro membership hides all ads, plus gives you double the colors in the color bucket, and more awesome pro features!

[Learn more, Memberships starting at \\$2.50/m!](#)

**Follow me
on Twitter!**

@ConvertingColor