

Converting Colors

CIELCh(8, 10.268, 19.374)

Have a look what the booklet for
CIELCh(8, 10.268, 19.374) contains.

CIELCh(8, 10.532, 17.686)	3
<i>Conversions</i>	4
<i>Details</i>	6
<i>Harmonies</i>	11
<i>Previews</i>	20
<i>Color Blindness Simulation</i>	23
<i>CSS Examples</i>	26

Color

CIELCh(8, 10.532, 17.686)

Conversions

Conversions Part 1

Format	Color
Hex	251213
RGB	37, 18, 19
RGB Percent	15%, 7%, 7%
CMY	0.8540, 0.9285, 0.9244
CMYK	0.00, 0.51, 0.48, 0.85
HSL	357°, 34%, 11%
HSV	357°, 51%, 15%
XYZ	1.1113, 0.8856, 0.7406
YIQ	23.7950, 11.0030, 4.3390

Conversions

Conversions Part 2

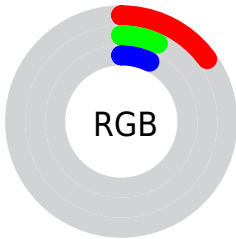
Format	Color
RYB	37, 18, 19
Decimal	2429459
CIELab	8.00, 10.03, 3.20
CIELCh	8, 10.532, 17.686
Yxy	0.8856, 0.4059, 0.3235
Android (android.graphics.Color)	4280619539 (0xFF251213)
YUV	23.7950, -2.3639, 11.5808
Hunter-Lab	9.4109, 4.6087, 1.9216

Details

The CIELCh color **8, 10.532, 17.686** is a dark color, and the websafe version is hex **000000**. A complement of this color would be **13, 8.272, 192.256**, and the grayscale version is **8, 0.002, 296.813**.

A 20% lighter version of the original color is **28, 10.820, 18.001**, and **0, 0.000, 0.000** is the 20% darker color. If you saturate the color by 10%, you get **7, 12.449, 17.133**, and if you desaturate by 10%, it is **9, 8.339, 17.938**.

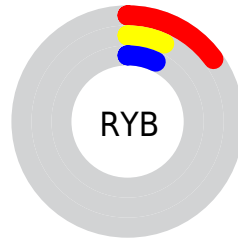
Distribution



Red (15%)

Green (7%)

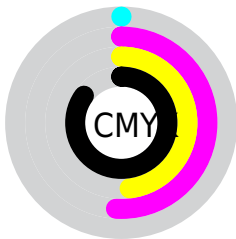
Blue (7%)



Red (15%)

Yellow (7%)

Blue (7%)

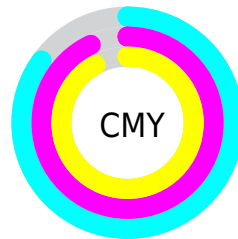


Cyan (0%)

Magenta (51%)

Yellow (48%)

Black (85%)



Cyan (85%)

Magenta (93%)

Yellow (92%)

Brightness & Saturation Gradients

These gradients show how the CIELCh color 8, 10.532, 17.686 changes by changing the brightness by 10 percent. The first figure shows a shift by +10% for each color and the second figure -10%.

Similar to the brightness gradients but the following saturation gradients show a change of the CIELCh color 8, 10.532, 17.686 by changing the saturation by 10% instead.

 8, 10.532, 17.686

 8, 10.532, 17.686

 98, 10.532, 17.686

 0, 10.532, 17.686

 28, 10.532, 17.686

 38, 10.532, 17.686

 48, 10.532, 17.686

 58, 10.532, 17.686

 68, 10.532, 17.686

 78, 10.532, 17.686

 88, 10.532, 17.686

 8, 10.532, 17.686

 8, 10.532, 17.686

■ 7, 12.449, 17.133

■ 9, 8.339, 17.938

■ 6, 13.926, 17.057

■ 11, 6.148, 16.978

■ 5, 15.109, 16.932

■ 12, 4.056, 16.146

■ 4, 16.189, 16.753

■ 13, 2.070, 15.418

■ 4, 17.117, 16.651

■ 15, 0.190, 14.007

■ 16, 1.587, 194.528

■ 17, 3.268, 194.040

■ 19, 4.859, 193.647

■ 20, 6.368, 193.308

Harmonies

Complementary

The Complementary color scheme is a pair of colors which are on the opposite of each other on the color wheel.



8, 10.532, 17.686



13, 8.272, 192.256

Rectangle

The Rectangle color scheme consists of four colors that form a rectangle on the color wheel.



8, 10.532, 17.686



8, 10.532, 67.686



8, 10.532, 197.686



8, 10.532, 247.686

Sweetspot

The Sweet Spot groups the original color and five complimentary colors.



8, 10.531, 17.690



17, 3.567, 15.772



9, 16.200, 324.585



7, 2.357, 15.174



63, 0.008, 296.813



9, 0.003, 296.813

Same Dimension

The Same Dimension uses a secret algorithm to generate beautiful new colors.



8, 10.531, 17.690



10, 16.290, 20.924



11, 8.472, 62.732



5, 0.709, 14.916



14, 40.729, 30.285



44, 87.815, 38.131

Inverse Universe

The Inverse Universe completely reimagines the original color for something new.



8, 10.531, 17.690



10, 16.290, 20.924



10, 7.408, 254.272



5, 0.709, 14.916



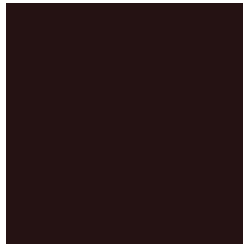
14, 40.729, 30.285



44, 87.815, 38.131

Previews

White Background



This preview shows how the CIELCh color 8, 10.532, 17.686 looks on a white background.

Color Contrast Check

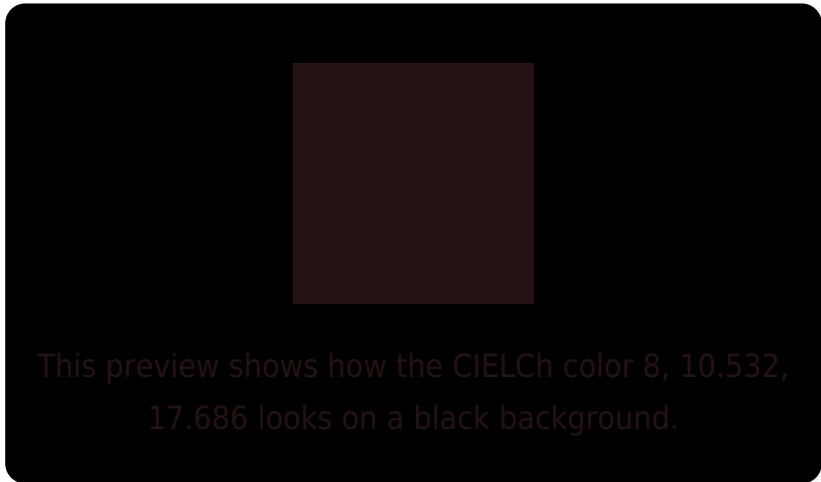
Large Text (above 18pt) WCAG AA ✓ Pass

Any Text WCAG AA ✓ Pass

Large Text (above 18pt) WCAG AAA ✓ Pass

Any Text WCAG AAA ✓ Pass

Black Background



Color Contrast Check

Large Text (above 18pt) WCAG AA × Fail

Any Text WCAG AA × Fail

Large Text (above 18pt) WCAG AAA × Fail

Any Text WCAG AAA × Fail

If you want to check with other color combinations, try the [Color Contrast Checker](#).

CIELCh 8, 10.532, 17.686

Background



This preview shows how black text looks on a background with the CIELCh color 8, 10.532, 17.686.

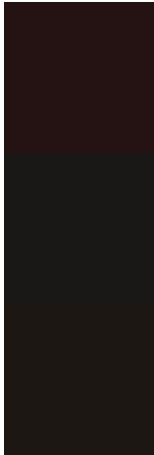


This preview shows how white text looks on a background with the CIELCh color 8, 10.532, 17.686.

Color Blindness Simulation

Color vision deficiency is a very complex topic, and I could not describe the different causes any better than Wikipedia does, so if you want to learn more, you should check out their [article about color blindness](#).

Dichromacy



Original Color

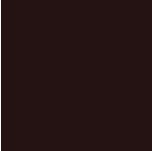
8, 10.532, 17.686

Protanopia

8, 1.555, 90.075

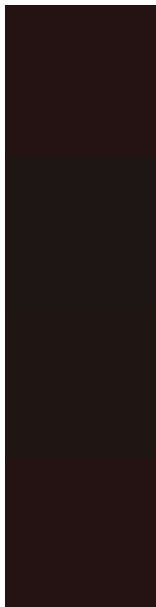
Deuteranopia

8, 4.306, 70.601



Tritanopia
8, 10.532, 17.686

Trichromacy



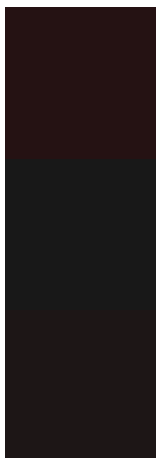
Original Color
8, 10.532, 17.686

Protanomaly
8, 3.846, 30.390

Deuteranomaly
8, 5.840, 39.180

Tritanomaly
8, 10.532, 17.686

Monochromacy



Original Color
8, 10.532, 17.686

Achromatopsia
8, 0.002, 296.813

Achromatomaly
8, 3.761, 20.086

CSS Examples

Text

The CSS property to change the color of the text to CIELCh 8, 10.532, 17.686 is called "color". The color property can be set on classes, ids or directly on the HTML element.

This example shows how text in the color `rgb(37, 18, 19)` looks like.

```
.text, #text, p{  
    color:rgb(37, 18, 19)  
}
```

If you want to add a text shadow in that color use the text-shadow property, you can generate a text shadow directly with our [CSS Text Shadow Generator](#).

Here you see how black text with a 4 pixel rgb(37, 18, 19) colored shadow looks like.

```
.shadow{ text-shadow: 4px 4px 2px rgb(37, 18, 19) }
```

Border

The CSS property to change the border of an element to CIELCh 8, 10.532, 17.686 is called "border". The border property can be set on classes, ids or directly on the HTML element.

This example shows the color as border, it can be applied via the CSS property "border" or "border-color".

```
.border, #border, table{ border:4px solid rgb(37, 18, 19) }
```

If only the border color should be changed use the property border-color.

```
.border{ border-color:rgb(37, 18, 19) }
```

If you want to add a box shadow in that color use:

Here you see how a box with a 4 pixel rgb(37, 18, 19) colored shadow looks like.

```
.boxshadow{ -moz-box-shadow:4px 4px 4px  
4px rgb(37, 18, 19); -webkit-box-  
shadow:4px 4px 4px 4px rgb(37, 18, 19);  
box-shadow:4px 4px 4px 4px rgb(37, 18, 19)  
}
```

Background

The CSS property to change the background color of an element to CIELCh 8, 10.532, 17.686 is called "background". The background property can be set on classes, ids or directly on the HTML element.

```
.background, #background, body{  
background: rgb(37, 18, 19) }
```

If only the background color should be changed can be used:

```
.background{ background-color: rgb(37, 18,  
19) }
```

This example shows the color as background, it is applied via the CSS property "background".

To optimize and compress your CSS code, you can use our [online CSS compressor and optimizer](#) based on csstidy. If you want to create a linear or radial gradient as background or border, check our [CSS Gradient Generator](#).

Hey! You found this booklet interesting? Support Converting Colors with the new Membership Option!

The pro membership hides all ads, plus gives you double the colors in the color bucket, and more awesome pro features!

[Learn more, Memberships starting at \\$2.50/m!](#)

**Follow me
on Twitter!**

@ConvertingColor