

Converting Colors

CIELCh(90, 4.665, 35.525)

Have a look what the booklet for
CIELCh(90, 4.665, 35.525) contains.

CIELCh(90, 4.614, 39.218)	3
<i>Conversions</i>	4
<i>Details</i>	6
<i>Harmonies</i>	11
<i>Previews</i>	20
<i>Color Blindness Simulation</i>	23
<i>CSS Examples</i>	26

Color

CIELCh(90, 4.614, 39.218)

Conversions

Conversions Part 1

Format	Color
Hex	ECE0DD
RGB	236, 224, 221
RGB Percent	93%, 88%, 87%
CMY	0.0748, 0.1219, 0.1336
CMYK	0.00, 0.05, 0.06, 0.07
HSL	12°, 28%, 90%
HSV	12°, 6%, 93%
XYZ	74.2396, 76.3034, 79.1660
YIQ	227.2460, 8.1150, 1.6110

Conversions

Conversions Part 2

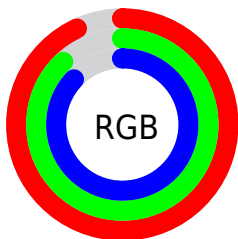
Format	Color
R _Y B	236, 225, 221
Decimal	15524061
CIE Lab	90.00, 3.57, 2.92
CIE LCh	90, 4.614, 39.218
Yxy	76.3034, 0.3232, 0.3322
Android (android.graphics.Color)	4293714141 (0xFFECE0DD)
YUV	227.2460, -3.0793, 7.6773
Hunter-Lab	87.3518, -1.1598, 7.4124

Details

The CIELCh color **90, 4.614, 39.218** is a light color, and the websafe version is hex **CCCCCC**. A complement of this color would be **92, 4.438, 219.817**, and the grayscale version is **90, 0.011, 296.813**.

A 20% lighter version of the original color is **100, 0.012, 296.813**, and **70, 4.520, 40.836** is the 20% darker color. If you saturate the color by 10%, you get **85, 12.371, 39.203**, and if you desaturate by 10%, it is **95, 2.544, 219.844**.

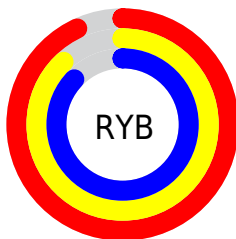
Distribution



Red (93%)

Green (88%)

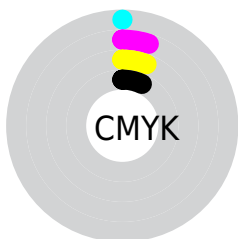
Blue (87%)



Red (93%)

Yellow (88%)

Blue (87%)

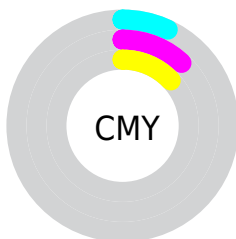


Cyan (0%)

Magenta (5%)

Yellow (6%)

Black (7%)



Cyan (7%)

Magenta (12%)

Yellow (13%)

Brightness & Saturation Gradients

These gradients show how the CIELCh color 90, 4.614, 39.218 changes by changing the brightness by 10 percent. The first figure shows a shift by +10% for each color and the second figure -10%.

Similar to the brightness gradients but the following saturation gradients show a change of the CIELCh color 90, 4.614, 39.218 by changing the saturation by 10% instead.



90, 4.614, 39.218

90, 4.614, 39.218

85, 12.371, 39.203

95, 2.544, 219.844

80, 20.789, 39.214

99, 6.542, 199.092

75, 29.907, 39.369

70, 39.739, 39.715

65, 50.240, 40.287

61, 61.268, 41.096

58, 72.481, 42.073

55, 83.105, 42.961

52, 91.516, 43.125

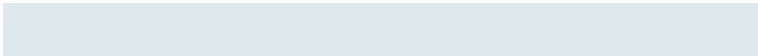
Harmonies

Complementary

The Complementary color scheme is a pair of colors which are on the opposite of each other on the color wheel.



90, 4.614, 39.218



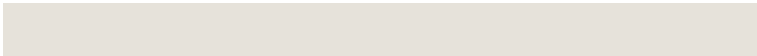
92, 4.438, 219.817

Rectangle

The Rectangle color scheme consists of four colors that form a rectangle on the color wheel.



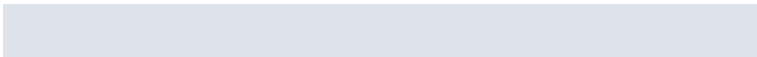
90, 4.614, 39.218



90, 4.614, 89.218



90, 4.614, 219.218



90, 4.614, 269.218

Sweetspot

The Sweet Spot groups the original color and five complimentary colors.



90, 4.613, 39.249



99, 1.517, 39.039



90, 8.258, 330.881



53, 0.862, 39.018



0, 0.000, 0.000



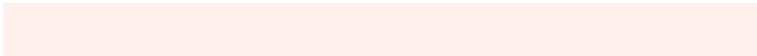
53, 0.007, 296.813

Same Dimension

The Same Dimension uses a secret algorithm to generate beautiful new colors.



90, 4.613, 39.249



95, 6.226, 39.249



92, 5.637, 92.881



46, 4.156, 39.243



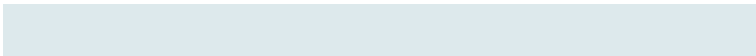
40, 76.689, 43.547



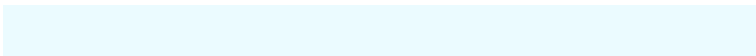
9, 24.926, 34.214

Inverse Universe

The Inverse Universe completely reimagines the original color for something new.



92, 4.438, 219.817



98, 5.924, 219.842



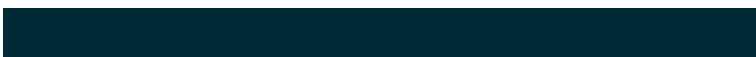
90, 5.660, 274.542



48, 3.918, 219.876



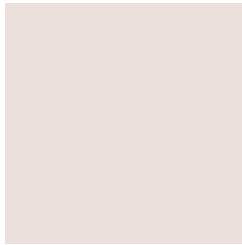
56, 33.974, 235.564



15, 14.422, 229.172

Previews

White Background



This preview shows how the CIELCh color 90, 4.614, 39.218 looks on a white background.

Color Contrast Check

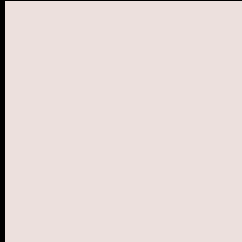
Large Text (above 18pt) WCAG AA × Fail

Any Text WCAG AA × Fail

Large Text (above 18pt) WCAG AAA × Fail

Any Text WCAG AAA × Fail

Black Background



This preview shows how the CIE LCh color 90, 4.614, 39.218 looks on a black background.

Color Contrast Check

Large Text (above 18pt) WCAG AA ✓ Pass

Any Text WCAG AA ✓ Pass

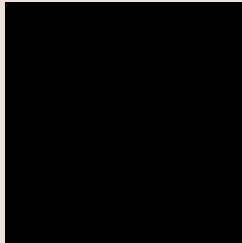
Large Text (above 18pt) WCAG AAA ✓ Pass

Any Text WCAG AAA ✓ Pass

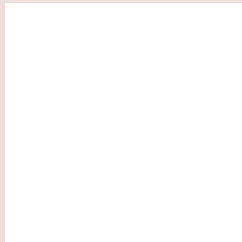
If you want to check with other color combinations, try the [Color Contrast Checker](#).

CIELCh 90, 4.614, 39.218

Background



This preview shows how black text looks on a background with the CIELCh color 90, 4.614, 39.218.

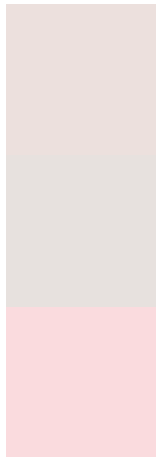


This preview shows how white text looks on a background with the CIELCh color 90, 4.614, 39.218.

Color Blindness Simulation

Color vision deficiency is a very complex topic, and I could not describe the different causes any better than Wikipedia does, so if you want to learn more, you should check out their [article about color blindness](#).

Dichromacy



Original Color
90, 4.614, 39.218

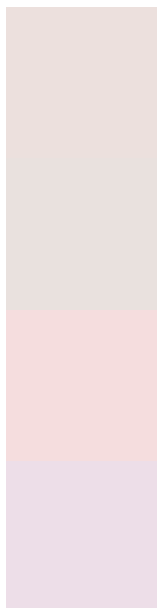
Protanopia
90, 2.650, 55.183

Deuteranopia
90, 11.456, 12.428



Tritanopia
90, 11.175, 323.310

Trichromacy



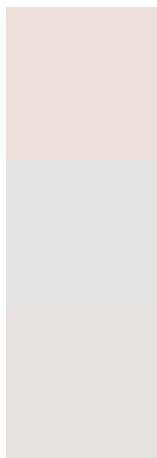
Original Color
90, 4.614, 39.218

Protanomaly
90, 3.269, 47.758

Deuteranomaly
90, 8.775, 16.596

Tritanomaly
90, 7.499, 336.058

Monochromacy



Original Color
90, 4.614, 39.218

Achromatopsia
90, 0.011, 296.813

Achromatomaly
90, 1.518, 39.036

CSS Examples

Text

The CSS property to change the color of the text to CIELCh 90, 4.614, 39.218 is called "color". The color property can be set on classes, ids or directly on the HTML element.

This example shows how text in the color `rgb(236, 224, 221)` looks like.

```
.text, #text, p{  
    color:rgb(236, 224, 221)  
}
```

If you want to add a text shadow in that color use the text-shadow property, you can generate a text shadow directly with our [CSS Text Shadow Generator](#).

Here you see how black text with a 4 pixel rgb(236, 224, 221) colored shadow looks like.

```
.shadow{ text-shadow: 4px 4px 2px rgb(236, 224, 221) }
```

Border

The CSS property to change the border of an element to CIELCh 90, 4.614, 39.218 is called "border". The border property can be set on classes, ids or directly on the HTML element.

This example shows the color as border, it can be applied via the CSS property "border" or "border-color".

```
.border, #border, table{ border:4px solid rgb(236, 224, 221) }
```

If only the border color should be changed use the property border-color.

```
.border{ border-color:rgb(236, 224, 221) }
```

If you want to add a box shadow in that color use:

Here you see how a box with a 4 pixel rgb(236, 224, 221) colored shadow looks like.

```
.boxshadow{ -moz-box-shadow:4px 4px 4px  
4px rgb(236, 224, 221); -webkit-box-  
shadow:4px 4px 4px 4px rgb(236, 224, 221);  
box-shadow:4px 4px 4px 4px rgb(236, 224,  
221) }
```

Background

The CSS property to change the background color of an element to CIELCh 90, 4.614, 39.218 is called "background". The background property can be set on classes, ids or directly on the HTML element.

```
.background, #background, body{  
background: rgb(236, 224, 221) }
```

If only the background color should be changed can be used:

```
.background{ background-color: rgb(236,  
224, 221) }
```

This example shows the color as background, it is applied via the CSS property "background".

To optimize and compress your CSS code, you can use our [online CSS compressor and optimizer](#) based on csstidy. If you want to create a linear or radial gradient as background or border, check our [CSS Gradient Generator](#).

Hey! You found this booklet interesting? Support Converting Colors with the new Membership Option!

The pro membership hides all ads, plus gives you double the colors in the color bucket, and more awesome pro features!

[Learn more, Memberships starting at \\$2.50/m!](#)

**Follow me
on Twitter!**

@ConvertingColor