

Converting Colors

CIELCh(90, 4.919, 31.342)

Have a look what the booklet for
CIELCh(90, 4.919, 31.342) contains.

CIELCh(90, 4.821, 31.992)	3
<i>Conversions</i>	4
<i>Details</i>	6
<i>Harmonies</i>	11
<i>Previews</i>	20
<i>Color Blindness Simulation</i>	23
<i>CSS Examples</i>	26

Color

CIELCh(90, 4.821, 31.992)

Conversions

Conversions Part 1

Format	Color
Hex	EDE0DE
RGB	237, 224, 222
RGB Percent	93%, 88%, 87%
CMY	0.0721, 0.1230, 0.1309
CMYK	0.00, 0.05, 0.06, 0.07
HSL	8°, 29%, 90%
HSV	8°, 6%, 93%
XYZ	74.4886, 76.3034, 79.6465
YIQ	227.6590, 8.3900, 2.1340

Conversions

Conversions Part 2

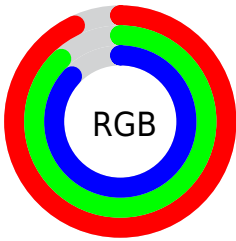
Format	Color
R _Y B	237, 224, 222
Decimal	15589598
CIE Lab	90.00, 4.09, 2.55
CIE LCh	90, 4.821, 31.992
Yxy	76.3034, 0.3232, 0.3311
Android (android.graphics.Color)	4293779678 (0xFFE0DE)
YUV	227.6590, -2.7899, 8.1921
Hunter-Lab	87.3518, -0.6511, 7.0862

Details

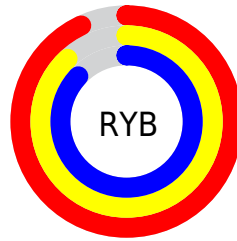
The CIELCh color **90, 4.821, 31.992** is a light color, and the websafe version is hex **CCCCCC**. A complement of this color would be **92, 4.630, 212.193**, and the grayscale version is **90, 0.011, 296.813**.

A 20% lighter version of the original color is **100, 0.012, 296.813**, and **70, 4.723, 33.019** is the 20% darker color. If you saturate the color by 10%, you get **84, 12.956, 32.300**, and if you desaturate by 10%, it is **96, 2.676, 212.305**.

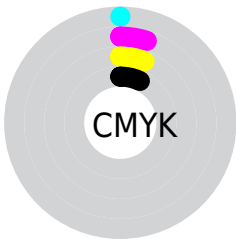
Distribution



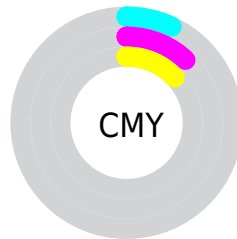
- Red (93%)
- Green (88%)
- Blue (87%)



- Red (93%)
- Yellow (88%)
- Blue (87%)



- Cyan (0%)
- Magenta (5%)
- Yellow (6%)
- Black (7%)



- Cyan (7%)
- Magenta (12%)
- Yellow (13%)

Brightness & Saturation Gradients

These gradients show how the CIELCh color 90, 4.821, 31.992 changes by changing the brightness by 10 percent. The first figure shows a shift by +10% for each color and the second figure -10%.

Similar to the brightness gradients but the following saturation gradients show a change of the CIELCh color 90, 4.821, 31.992 by changing the saturation by 10% instead.



90, 4.821, 31.992

90, 4.821, 31.992

84, 12.956, 32.300

96, 2.676, 212.305

79, 21.784, 32.671

99, 6.305, 199.111

74, 31.334, 33.234

69, 41.594, 34.049

64, 52.484, 35.172

60, 63.820, 36.637

56, 75.224, 38.390

53, 85.894, 40.156

51, 94.108, 41.205

Harmonies

Complementary

The Complementary color scheme is a pair of colors which are on the opposite of each other on the color wheel.



90, 4.821, 31.992



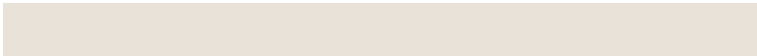
92, 4.630, 212.193

Rectangle

The Rectangle color scheme consists of four colors that form a rectangle on the color wheel.



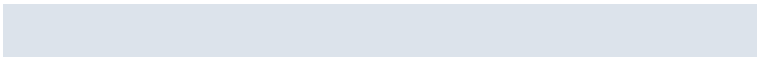
90, 4.821, 31.992



90, 4.821, 81.992



90, 4.821, 211.992



90, 4.821, 261.992

Sweetspot

The Sweet Spot groups the original color and five complimentary colors.



90, 4.820, 32.020



99, 1.587, 31.684



90, 8.650, 328.643



53, 0.902, 31.661



0, 0.000, 0.000



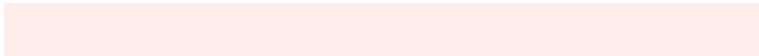
53, 0.007, 296.813

Same Dimension

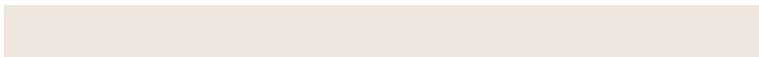
The Same Dimension uses a secret algorithm to generate beautiful new colors.



90, 4.820, 32.020



95, 6.510, 32.073



92, 5.269, 87.515



46, 4.347, 32.112



39, 78.591, 41.824



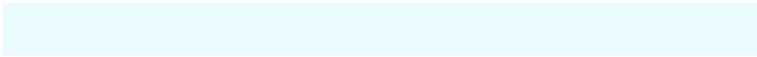
8, 25.954, 30.206

Inverse Universe

The Inverse Universe completely reimagines the original color for something new.



92, 4.630, 212.193



98, 6.183, 212.165



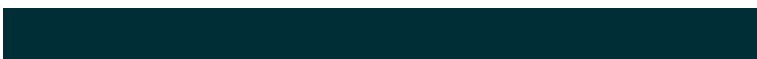
90, 5.265, 269.248



48, 4.088, 212.151



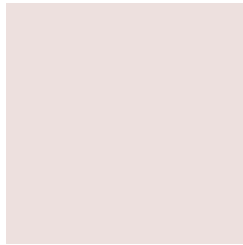
59, 33.859, 221.108



17, 14.640, 217.027

Previews

White Background



This preview shows how the CIELCh color 90, 4.821, 31.992 looks on a white background.

Color Contrast Check

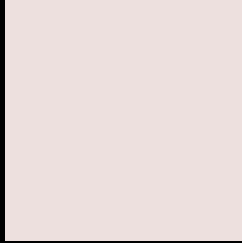
Large Text (above 18pt) WCAG AA × Fail

Any Text WCAG AA × Fail

Large Text (above 18pt) WCAG AAA × Fail

Any Text WCAG AAA × Fail

Black Background



This preview shows how the CIELCh color 90, 4.821, 31.992 looks on a black background.

Color Contrast Check

Large Text (above 18pt) WCAG AA ✓ Pass

Any Text WCAG AA ✓ Pass

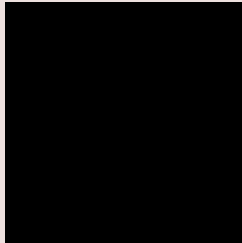
Large Text (above 18pt) WCAG AAA ✓ Pass

Any Text WCAG AAA ✓ Pass

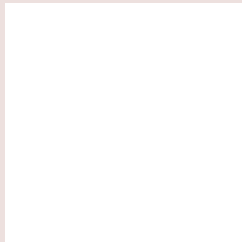
If you want to check with other color combinations, try the [Color Contrast Checker](#).

CIELCh 90, 4.821, 31.992

Background



This preview shows how black text looks on a background with the CIELCh color 90, 4.821, 31.992.

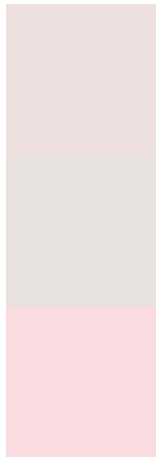


This preview shows how white text looks on a background with the CIELCh color 90, 4.821, 31.992.

Color Blindness Simulation

Color vision deficiency is a very complex topic, and I could not describe the different causes any better than Wikipedia does, so if you want to learn more, you should check out their [article about color blindness](#).

Dichromacy



Original Color

90, 4.821, 31.992

Protanopia

90, 2.385, 45.019

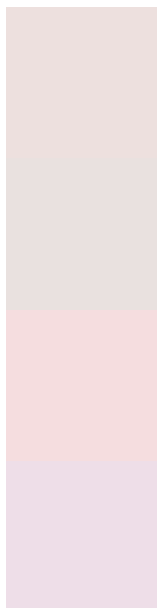
Deuteranopia

90, 11.520, 9.878



Tritanopia
90, 10.948, 326.363

Trichromacy



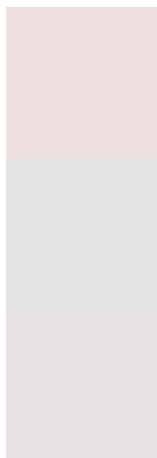
Original Color
90, 4.821, 31.992

Protanomaly
90, 3.057, 39.190

Deuteranomaly
90, 8.809, 13.241

Tritanomaly
90, 7.761, 337.927

Monochromacy



Original Color
90, 4.821, 31.992

Achromatopsia
90, 0.011, 296.813

Achromatomaly
90, 1.518, 39.036

CSS Examples

Text

The CSS property to change the color of the text to CIELCh 90, 4.821, 31.992 is called "color". The color property can be set on classes, ids or directly on the HTML element.

This example shows how text in the color `rgb(237, 224, 222)` looks like.

```
.text, #text, p{  
    color:rgb(237, 224, 222)  
}
```

If you want to add a text shadow in that color use the text-shadow property, you can generate a text shadow directly with our [CSS Text Shadow Generator](#).

Here you see how black text with a 4 pixel rgb(237, 224, 222) colored shadow looks like.

```
.shadow{ text-shadow: 4px 4px 2px rgb(237, 224, 222) }
```

Border

The CSS property to change the border of an element to CIELCh 90, 4.821, 31.992 is called "border". The border property can be set on classes, ids or directly on the HTML element.

This example shows the color as border, it can be applied via the CSS property "border" or "border-color".

```
.border, #border, table{ border:4px solid rgb(237, 224, 222) }
```

If only the border color should be changed use the property `border-color`.

```
.border{ border-color:rgb(237, 224, 222) }
```

If you want to add a box shadow in that color use:

Here you see how a box with a 4 pixel `rgb(237, 224, 222)` colored shadow looks like.

```
.boxshadow{ -moz-box-shadow:4px 4px 4px  
4px rgb(237, 224, 222); -webkit-box-  
shadow:4px 4px 4px 4px rgb(237, 224, 222);  
box-shadow:4px 4px 4px 4px rgb(237, 224,  
222) }
```

Background

The CSS property to change the background color of an element to CIELCh 90, 4.821, 31.992 is called "background". The background property can be set on classes, ids or directly on the HTML element.

```
.background, #background, body{  
background: rgb(237, 224, 222) }
```

If only the background color should be changed can be used:

```
.background{ background-color: rgb(237,  
224, 222) }
```

This example shows the color as background, it is applied via the CSS property "background".

To optimize and compress your CSS code, you can use our [online CSS compressor and optimizer](#) based on csstidy. If you want to create a linear or radial gradient as background or border, check our [CSS Gradient Generator](#).

Hey! You found this booklet interesting? Support Converting Colors with the new Membership Option!

The pro membership hides all ads, plus gives you double the colors in the color bucket, and more awesome pro features!

[Learn more, Memberships starting at \\$2.50/m!](#)

**Follow me
on Twitter!**

@ConvertingColor