

Converting Colors

CIELCh(90, 5.265, 14.722)

Have a look what the booklet for
CIELCh(90, 5.265, 14.722) contains.

CIELCh(90, 5.457, 14.245)	3
<i>Conversions</i>	4
<i>Details</i>	6
<i>Harmonies</i>	11
<i>Previews</i>	20
<i>Color Blindness Simulation</i>	23
<i>CSS Examples</i>	26

Color

CIELCh(90, 5.457, 14.245)

Conversions

Conversions Part 1

Format	Color
Hex	EEDFE0
RGB	238, 223, 224
RGB Percent	93%, 87%, 88%
CMY	0.0668, 0.1256, 0.1217
CMYK	0.00, 0.06, 0.06, 0.07
HSL	356°, 31%, 90%
HSV	356°, 6%, 93%
XYZ	75.0720, 76.3034, 81.2635
YIQ	227.5990, 8.6190, 3.4910

Conversions

Conversions Part 2

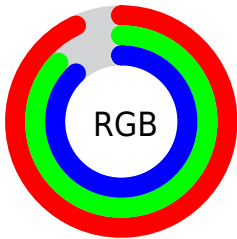
Format	Color
R _Y B	238, 223, 224
Decimal	15654880
CIE Lab	90.00, 5.29, 1.34
CIE LCh	90, 5.457, 14.245
Yxy	76.3034, 0.3227, 0.3280
Android (android.graphics.Color)	4293844960 (0xFFEEDFE0)
YUV	227.5990, -1.7743, 9.1217
Hunter-Lab	87.3518, 0.5411, 5.9887

Details

The CIELCh color **90, 5.457, 14.245** is a light color, and the websafe version is hex **CCCCCC**. A complement of this color would be **93, 5.267, 193.565**, and the grayscale version is **90, 0.011, 296.813**.

A 20% lighter version of the original color is **100, 0.012, 296.813**, and **70, 5.383, 13.983** is the 20% darker color. If you saturate the color by 10%, you get **84, 14.618, 15.233**, and if you desaturate by 10%, it is **96, 3.085, 193.848**.

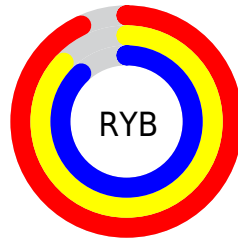
Distribution



Red (93%)

Green (87%)

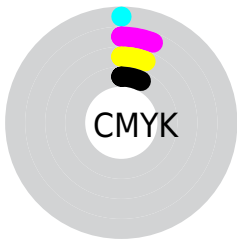
Blue (88%)



Red (93%)

Yellow (87%)

Blue (88%)

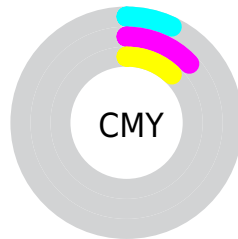


Cyan (0%)

Magenta (6%)

Yellow (6%)

Black (7%)



Cyan (7%)

Magenta (13%)

Yellow (12%)

Brightness & Saturation Gradients

These gradients show how the CIELCh color 90, 5.457, 14.245 changes by changing the brightness by 10 percent. The first figure shows a shift by +10% for each color and the second figure -10%.

Similar to the brightness gradients but the following saturation gradients show a change of the CIELCh color 90, 5.457, 14.245 by changing the saturation by 10% instead.

90, 5.457, 14.245

90, 5.457, 14.245

100, 5.457, 14.245

80, 5.457, 14.245

70, 5.457, 14.245

60, 5.457, 14.245

50, 5.457, 14.245

40, 5.457, 14.245

30, 5.457, 14.245

20, 5.457, 14.245

10, 5.457, 14.245

0, 5.457, 14.245

90, 5.457, 14.245

90, 5.457, 14.245

84, 14.618, 15.233

96, 3.085, 193.848

77, 24.403, 16.367

99, 5.853, 199.148

72, 34.755, 17.787

66, 45.532, 19.596

61, 56.492, 21.919

57, 67.298, 24.879

53, 77.564, 28.535

51, 86.860, 32.731

50, 94.413, 36.822

Harmonies

Complementary

The Complementary color scheme is a pair of colors which are on the opposite of each other on the color wheel.



90, 5.457, 14.245



93, 5.267, 193.565

Rectangle

The Rectangle color scheme consists of four colors that form a rectangle on the color wheel.



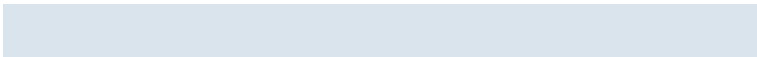
90, 5.457, 14.245



90, 5.457, 64.245



90, 5.457, 194.245



90, 5.457, 244.245

Sweetspot

The Sweet Spot groups the original color and five complimentary colors.



90, 5.455, 14.265



99, 1.805, 13.686



90, 9.278, 322.932



53, 1.026, 13.660



0, 0.000, 0.000



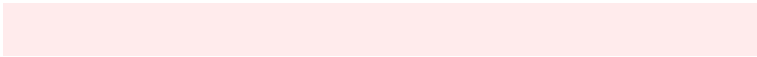
53, 0.007, 296.813

Same Dimension

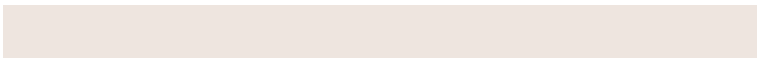
The Same Dimension uses a secret algorithm to generate beautiful new colors.



90, 5.455, 14.265



95, 7.370, 14.432



92, 4.532, 67.071



47, 5.004, 14.569



38, 78.932, 37.377



8, 29.498, 21.129

Inverse Universe

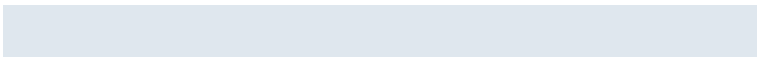
The Inverse Universe completely reimagines the original color for something new.



90, 5.455, 14.265



95, 7.370, 14.432



91, 4.444, 248.715



47, 5.004, 14.569



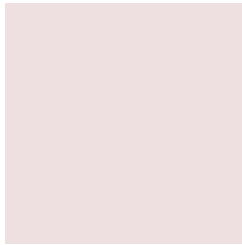
38, 78.932, 37.377



8, 29.498, 21.129

Previews

White Background



This preview shows how the CIELCh color 90, 5.457, 14.245 looks on a white background.

Color Contrast Check

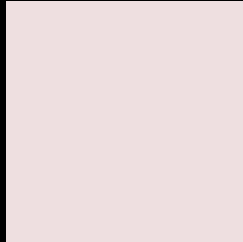
Large Text (above 18pt) WCAG AA × Fail

Any Text WCAG AA × Fail

Large Text (above 18pt) WCAG AAA × Fail

Any Text WCAG AAA × Fail

Black Background



This preview shows how the CIE LCh color 90, 5.457, 14.245 looks on a black background.

Color Contrast Check

Large Text (above 18pt) WCAG AA ✓ Pass

Any Text WCAG AA ✓ Pass

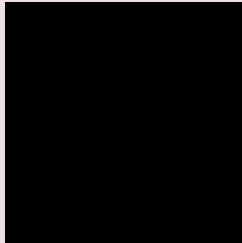
Large Text (above 18pt) WCAG AAA ✓ Pass

Any Text WCAG AAA ✓ Pass

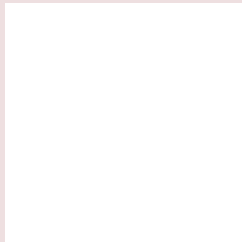
If you want to check with other color combinations, try the [Color Contrast Checker](#).

CIELCh 90, 5.457, 14.245

Background



This preview shows how black text looks on a background with the CIELCh color 90, 5.457, 14.245.

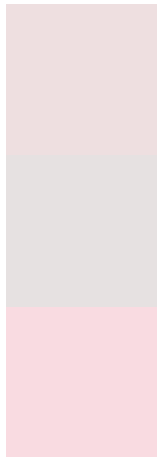


This preview shows how white text looks on a background with the CIELCh color 90, 5.457, 14.245.

Color Blindness Simulation

Color vision deficiency is a very complex topic, and I could not describe the different causes any better than Wikipedia does, so if you want to learn more, you should check out their [article about color blindness](#).

Dichromacy



Original Color

90, 5.457, 14.245

Protanopia

90, 1.795, 19.196

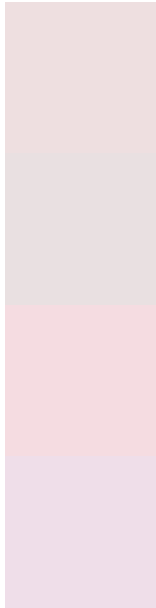
Deuteranopia

90, 11.361, 4.361



Tritanopia
90, 11.159, 327.864

Trichromacy



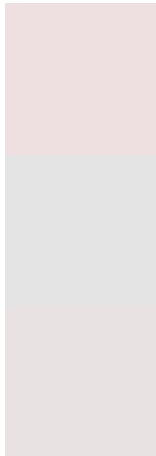
Original Color
90, 5.457, 14.245

Protanomaly
90, 3.286, 10.383

Deuteranomaly
90, 9.450, 4.158

Tritanomaly
90, 8.373, 336.972

Monochromacy



Original Color
90, 5.457, 14.245

Achromatopsia
91, 0.011, 296.813

Achromatomaly
90, 2.220, 5.791

CSS Examples

Text

The CSS property to change the color of the text to CIELCh 90, 5.457, 14.245 is called "color". The color property can be set on classes, ids or directly on the HTML element.

This example shows how text in the color `rgb(238, 223, 224)` looks like.

```
.text, #text, p{  
    color:rgb(238, 223, 224)  
}
```

If you want to add a text shadow in that color use the text-shadow property, you can generate a text shadow directly with our [CSS Text Shadow Generator](#).

Here you see how black text with a 4 pixel rgb(238, 223, 224) colored shadow looks like.

```
.shadow{ text-shadow: 4px 4px 2px rgb(238, 223, 224) }
```

Border

The CSS property to change the border of an element to CIELCh 90, 5.457, 14.245 is called "border". The border property can be set on classes, ids or directly on the HTML element.

This example shows the color as border, it can be applied via the CSS property "border" or "border-color".

```
.border, #border, table{ border:4px solid rgb(238, 223, 224) }
```

If only the border color should be changed use the property `border-color`.

```
.border{ border-color:rgb(238, 223, 224) }
```

If you want to add a box shadow in that color use:

Here you see how a box with a 4 pixel `rgb(238, 223, 224)` colored shadow looks like.

```
.boxshadow{ -moz-box-shadow:4px 4px 4px  
4px rgb(238, 223, 224); -webkit-box-  
shadow:4px 4px 4px 4px rgb(238, 223, 224);  
box-shadow:4px 4px 4px 4px rgb(238, 223,  
224) }
```

Background

The CSS property to change the background color of an element to CIELCh 90, 5.457, 14.245 is called "background". The background property can be set on classes, ids or directly on the HTML element.

```
.background, #background, body{  
background: rgb(238, 223, 224) }
```

If only the background color should be changed can be used:

```
.background{ background-color: rgb(238,  
223, 224) }
```

This example shows the color as background, it is applied via the CSS property "background".

To optimize and compress your CSS code, you can use our [online CSS compressor and optimizer](#) based on csstidy. If you want to create a linear or radial gradient as background or border, check our [CSS Gradient Generator](#).

Hey! You found this booklet interesting? Support Converting Colors with the new Membership Option!

The pro membership hides all ads, plus gives you double the colors in the color bucket, and more awesome pro features!

[Learn more, Memberships starting at \\$2.50/m!](#)

**Follow me
on Twitter!**

@ConvertingColor