

Converting Colors

CIELCh(90, 6.155, 9.298)

Have a look what the booklet for
CIELCh(90, 6.155, 9.298) contains.

CIELCh(90, 6.352, 5.618)	3
<i>Conversions</i>	4
<i>Details</i>	6
<i>Harmonies</i>	11
<i>Previews</i>	20
<i>Color Blindness Simulation</i>	23
<i>CSS Examples</i>	26

Color

CIELCh(90, 6.352, 5.618)

Conversions

Conversions Part 1

Format	Color
Hex	EFDEE1
RGB	239, 222, 225
RGB Percent	94%, 87%, 88%
CMY	0.0613, 0.1280, 0.1162
CMYK	0.00, 0.07, 0.06, 0.06
HSL	349°, 35%, 91%
HSV	349°, 7%, 94%
XYZ	75.5762, 76.3034, 82.2362
YIQ	227.4250, 9.1690, 4.5370

Conversions

Conversions Part 2

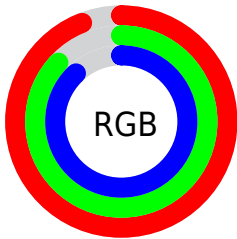
Format	Color
R _Y B	239, 222, 225
Decimal	15720161
CIE Lab	90.00, 6.32, 0.62
CIE LCh	90, 6.352, 5.618
Yxy	76.3034, 0.3228, 0.3259
Android (android.graphics.Color)	4293910241 (0xFFEFDEE1)
YUV	227.4250, -1.1955, 10.1513
Hunter-Lab	87.3518, 1.5713, 5.3284

Details

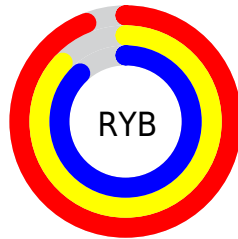
The CIELCh color **90, 6.352, 5.618** is a light color, and the websafe version is hex **CCCCCC**. A complement of this color would be **93, 6.159, 184.554**, and the grayscale version is **91, 0.011, 296.813**.

A 20% lighter version of the original color is **100, 0.012, 296.813**, and **70, 6.334, 4.933** is the 20% darker color. If you saturate the color by 10%, you get **84, 15.719, 6.735**, and if you desaturate by 10%, it is **96, 2.510, 185.074**.

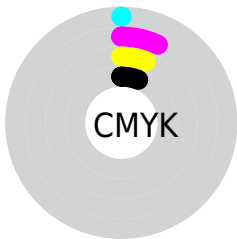
Distribution



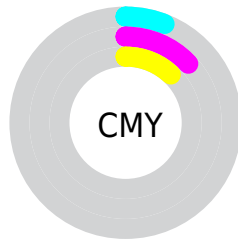
- Red (94%)
- Green (87%)
- Blue (88%)



- Red (94%)
- Yellow (87%)
- Blue (88%)



- Cyan (0%)
- Magenta (7%)
- Yellow (6%)
- Black (6%)



- Cyan (6%)
- Magenta (13%)
- Yellow (12%)

Brightness & Saturation Gradients

These gradients show how the CIELCh color 90, 6.352, 5.618 changes by changing the brightness by 10 percent. The first figure shows a shift by +10% for each color and the second figure -10%.

Similar to the brightness gradients but the following saturation gradients show a change of the CIELCh color 90, 6.352, 5.618 by changing the saturation by 10% instead.

90, 6.352, 5.618

90, 6.352, 5.618

100, 6.352, 5.618

80, 6.352, 5.618

70, 6.352, 5.618

60, 6.352, 5.618

50, 6.352, 5.618

40, 6.352, 5.618

30, 6.352, 5.618

20, 6.352, 5.618

10, 6.352, 5.618

0, 6.352, 5.618

90, 6.352, 5.618

90, 6.352, 5.618

84, 15.719, 6.735

96, 2.510, 185.074

78, 25.556, 8.005

99, 5.378, 199.188

72, 35.755, 9.546

66, 46.115, 11.459

61, 56.330, 13.872

57, 66.012, 16.936

54, 74.790, 20.789

52, 82.447, 25.460

50, 88.990, 30.677

Harmonies

Complementary

The Complementary color scheme is a pair of colors which are on the opposite of each other on the color wheel.



90, 6.352, 5.618



93, 6.159, 184.554

Rectangle

The Rectangle color scheme consists of four colors that form a rectangle on the color wheel.



90, 6.352, 5.618



90, 6.352, 55.618



90, 6.352, 185.618



90, 6.352, 235.618

Sweetspot

The Sweet Spot groups the original color and five complimentary colors.



90, 6.350, 5.633



99, 1.858, 4.922



90, 10.155, 319.602



53, 1.056, 4.896



0, 0.000, 0.000



53, 0.007, 296.813

Same Dimension

The Same Dimension uses a secret algorithm to generate beautiful new colors.



90, 6.350, 5.633



94, 8.515, 5.841



91, 5.036, 52.997



47, 5.119, 5.889



38, 73.741, 31.153



8, 29.073, 16.589

Inverse Universe

The Inverse Universe completely reimagines the original color for something new.



90, 6.350, 5.633



94, 8.515, 5.841



92, 4.860, 234.313



47, 5.119, 5.889



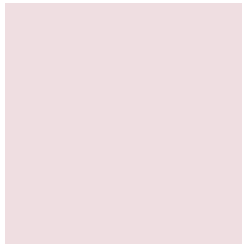
38, 73.741, 31.153



8, 29.073, 16.589

Previews

White Background



This preview shows how the CIELCh color 90, 6.352, 5.618 looks on a white background.

Color Contrast Check

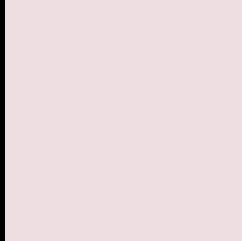
Large Text (above 18pt) WCAG AA × Fail

Any Text WCAG AA × Fail

Large Text (above 18pt) WCAG AAA × Fail

Any Text WCAG AAA × Fail

Black Background



This preview shows how the CIE LCh color 90, 6.352, 5.618 looks on a black background.

Color Contrast Check

Large Text (above 18pt) WCAG AA ✓ Pass

Any Text WCAG AA ✓ Pass

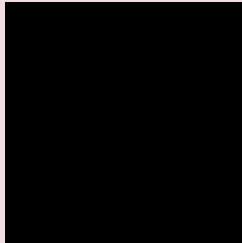
Large Text (above 18pt) WCAG AAA ✓ Pass

Any Text WCAG AAA ✓ Pass

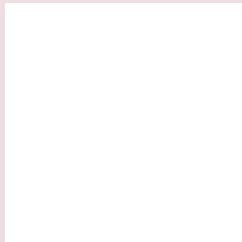
If you want to check with other color combinations, try the [Color Contrast Checker](#).

CIELCh 90, 6.352, 5.618

Background



This preview shows how black text looks on a background with the CIELCh color 90, 6.352, 5.618.

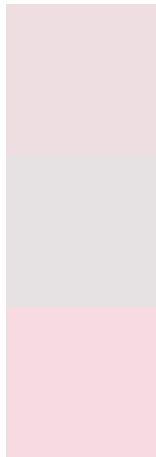


This preview shows how white text looks on a background with the CIELCh color 90, 6.352, 5.618.

Color Blindness Simulation

Color vision deficiency is a very complex topic, and I could not describe the different causes any better than Wikipedia does, so if you want to learn more, you should check out their [article about color blindness](#).

Dichromacy



Original Color

90, 6.352, 5.618

Protanopia

90, 2.084, 349.371

Deuteranopia

90, 11.150, 1.240



Tritanopia
90, 12.010, 329.104

Trichromacy



Original Color

90, 6.352, 5.618

Protanomaly

90, 3.409, 1.760

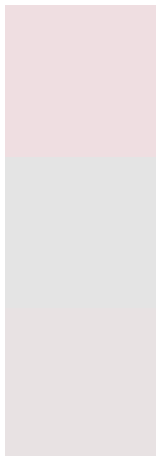
Deuteranomaly

90, 9.594, 1.176

Tritanomaly

90, 9.255, 337.727

Monochromacy



Original Color

90, 6.352, 5.618

Achromatopsia

91, 0.011, 296.813

Achromatomaly

90, 2.220, 5.791

CSS Examples

Text

The CSS property to change the color of the text to CIELCh 90, 6.352, 5.618 is called "color". The color property can be set on classes, ids or directly on the HTML element.

This example shows how text in the color `rgb(239, 222, 225)` looks like.

```
.text, #text, p{  
    color:rgb(239, 222, 225)  
}
```

If you want to add a text shadow in that color use the text-shadow property, you can generate a text shadow directly with our [CSS Text Shadow Generator](#).

Here you see how black text with a 4 pixel rgb(239, 222, 225) colored shadow looks like.

```
.shadow{ text-shadow: 4px 4px 2px rgb(239, 222, 225) }
```

Border

The CSS property to change the border of an element to CIELCh 90, 6.352, 5.618 is called "border". The border property can be set on classes, ids or directly on the HTML element.

This example shows the color as border, it can be applied via the CSS property "border" or "border-color".

```
.border, #border, table{ border:4px solid rgb(239, 222, 225) }
```

If only the border color should be changed use the property `border-color`.

```
.border{ border-color:rgb(239, 222, 225) }
```

If you want to add a box shadow in that color use:

Here you see how a box with a 4 pixel `rgb(239, 222, 225)` colored shadow looks like.

```
.boxshadow{ -moz-box-shadow:4px 4px 4px  
4px rgb(239, 222, 225); -webkit-box-  
shadow:4px 4px 4px 4px rgb(239, 222, 225);  
box-shadow:4px 4px 4px 4px rgb(239, 222,  
225) }
```

Background

The CSS property to change the background color of an element to CIELCh 90, 6.352, 5.618 is called "background". The background property can be set on classes, ids or directly on the HTML element.

```
.background, #background, body{  
background: rgb(239, 222, 225) }
```

If only the background color should be changed can be used:

```
.background{ background-color: rgb(239,  
222, 225) }
```

This example shows the color as background, it is applied via the CSS property "background".

To optimize and compress your CSS code, you can use our [online CSS compressor and optimizer](#) based on csstidy. If you want to create a linear or radial gradient as background or border, check our [CSS Gradient Generator](#).

Hey! You found this booklet interesting? Support Converting Colors with the new Membership Option!

The pro membership hides all ads, plus gives you double the colors in the color bucket, and more awesome pro features!

[Learn more, Memberships starting at \\$2.50/m!](#)

**Follow me
on Twitter!**

@ConvertingColor