

Converting Colors

CIELCh(90, 6.970, 22.495)

Have a look what the booklet for
CIELCh(90, 6.970, 22.495) contains.

CIELCh(90, 6.914, 19.811)	3
<i>Conversions</i>	4
<i>Details</i>	6
<i>Harmonies</i>	11
<i>Previews</i>	20
<i>Color Blindness Simulation</i>	23
<i>CSS Examples</i>	26

Color

CIELCh(90, 6.914, 19.811)

Conversions

Conversions Part 1

Format	Color
Hex	F1DEDE
RGB	241, 222, 222
RGB Percent	95%, 87%, 87%
CMY	0.0544, 0.1289, 0.1290
CMYK	0.00, 0.08, 0.08, 0.05
HSL	0°, 41%, 91%
HSV	0°, 8%, 95%
XYZ	75.6659, 76.3034, 79.9264
YIQ	227.6810, 11.3240, 4.0280

Conversions

Conversions Part 2

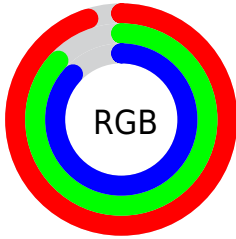
Format	Color
R _Y B	241, 222, 222
Decimal	15851230
CIE Lab	90.00, 6.50, 2.34
CIE LCh	90, 6.914, 19.811
Yxy	76.3034, 0.3263, 0.3290
Android (android.graphics.Color)	4294041310 (0xFFFF1DEDE)
YUV	227.6810, -2.8007, 11.6808
Hunter-Lab	87.3518, 1.7547, 6.8962

Details

The CIELCh color **90, 6.914, 19.811** is a light color, and the websafe version is hex **CCCCCC**. A complement of this color would be **94, 6.576, 199.086**, and the grayscale version is **91, 0.011, 296.813**.

A 20% lighter version of the original color is **100, 0.012, 296.813**, and **70, 6.929, 19.946** is the 20% darker color. If you saturate the color by 10%, you get **84, 16.319, 20.664**, and if you desaturate by 10%, it is **97, 1.785, 199.669**.

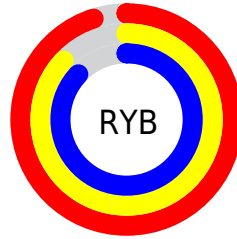
Distribution



Red (95%)

Green (87%)

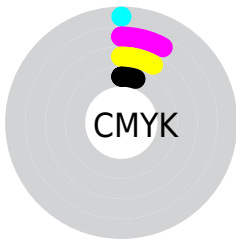
Blue (87%)



Red (95%)

Yellow (87%)

Blue (87%)

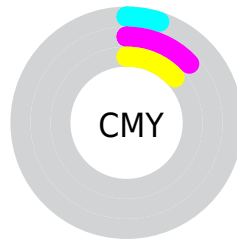


Cyan (0%)

Magenta (8%)

Yellow (8%)

Black (5%)



Cyan (5%)

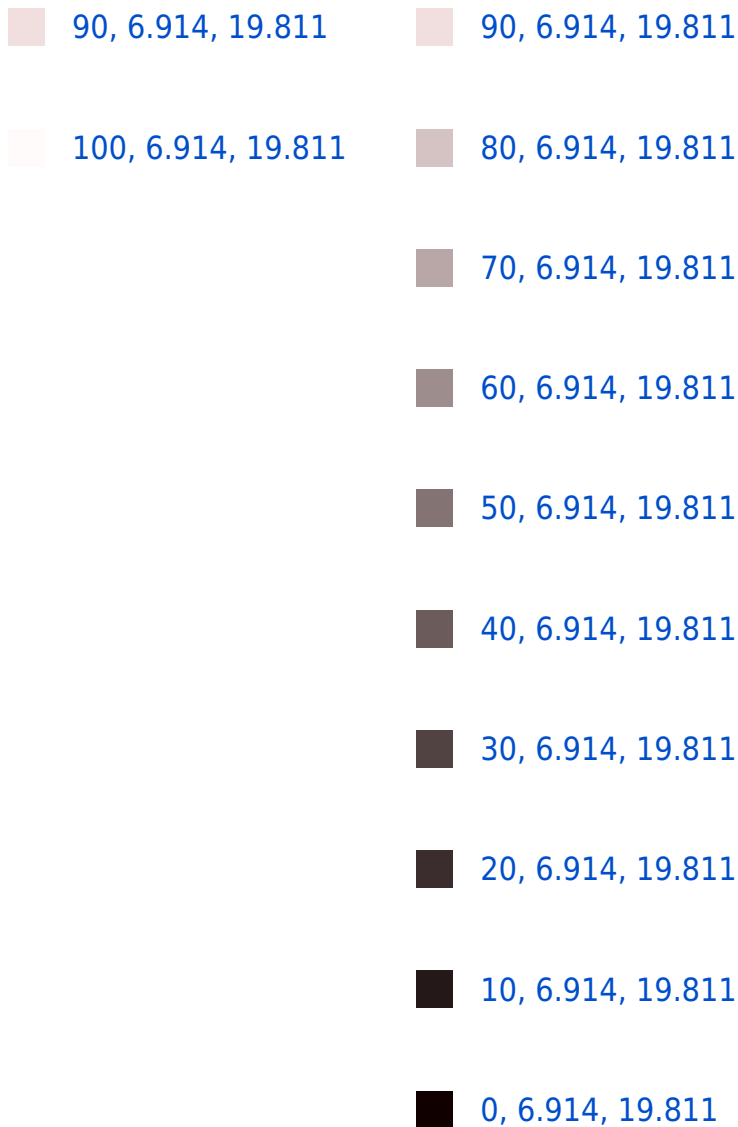
Magenta (13%)

Yellow (13%)

Brightness & Saturation Gradients

These gradients show how the CIELCh color 90, 6.914, 19.811 changes by changing the brightness by 10 percent. The first figure shows a shift by +10% for each color and the second figure -10%.

Similar to the brightness gradients but the following saturation gradients show a change of the CIELCh color 90, 6.914, 19.811 by changing the saturation by 10% instead.



90, 6.914, 19.811

90, 6.914, 19.811

84, 16.319, 20.664

97, 1.785, 199.669

77, 26.451, 21.698

99, 4.783, 199.241

71, 37.269, 23.039

66, 48.643, 24.794

61, 60.333, 27.077

57, 71.980, 29.971

54, 83.079, 33.419

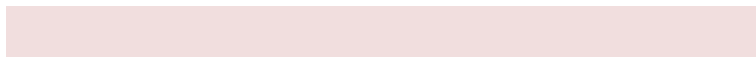
51, 92.732, 36.970

51, 99.119, 39.541

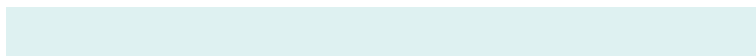
Harmonies

Complementary

The Complementary color scheme is a pair of colors which are on the opposite of each other on the color wheel.



90, 6.914, 19.811



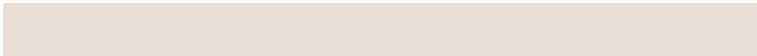
94, 6.576, 199.086

Rectangle

The Rectangle color scheme consists of four colors that form a rectangle on the color wheel.



90, 6.914, 19.811



90, 6.914, 69.811



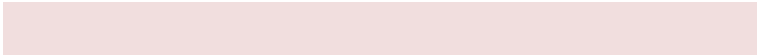
90, 6.914, 199.811



90, 6.914, 249.811

Sweetspot

The Sweet Spot groups the original color and five complimentary colors.



90, 6.912, 19.829



99, 1.794, 19.176



90, 11.985, 324.851



53, 1.020, 19.151



0, 0.000, 0.000



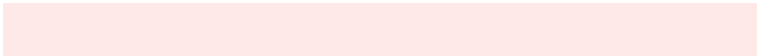
53, 0.007, 296.813

Same Dimension

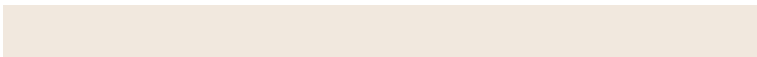
The Same Dimension uses a secret algorithm to generate beautiful new colors.



90, 6.912, 19.829



94, 8.298, 19.921



92, 5.970, 74.386



47, 4.992, 19.956



38, 81.700, 39.997



8, 29.831, 23.818

Inverse Universe

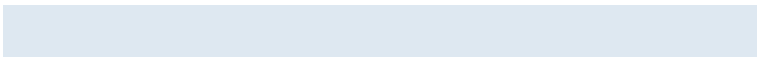
The Inverse Universe completely reimagines the original color for something new.



94, 6.576, 199.086



98, 7.837, 199.013



91, 5.867, 256.509



49, 4.700, 198.986



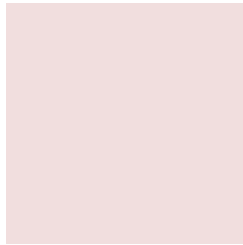
68, 39.144, 196.420



21, 17.089, 196.416

Previews

White Background



This preview shows how the CIELCh color 90, 6.914, 19.811 looks on a white background.

Color Contrast Check

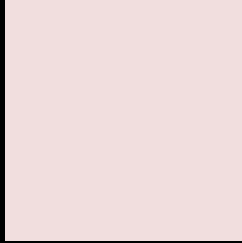
Large Text (above 18pt) WCAG AA × Fail

Any Text WCAG AA × Fail

Large Text (above 18pt) WCAG AAA × Fail

Any Text WCAG AAA × Fail

Black Background



This preview shows how the CIE LCh color 90, 6.914, 19.811 looks on a black background.

Color Contrast Check

Large Text (above 18pt) WCAG AA ✓ Pass

Any Text WCAG AA ✓ Pass

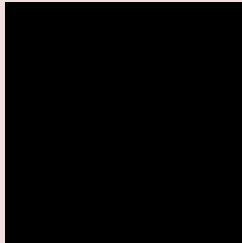
Large Text (above 18pt) WCAG AAA ✓ Pass

Any Text WCAG AAA ✓ Pass

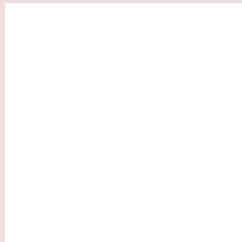
If you want to check with other color combinations, try the [Color Contrast Checker](#).

CIELCh 90, 6.914, 19.811

Background



This preview shows how black text looks on a background with the CIELCh color 90, 6.914, 19.811.

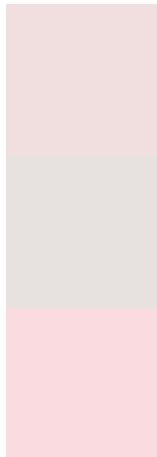


This preview shows how white text looks on a background with the CIELCh color 90, 6.914, 19.811.

Color Blindness Simulation

Color vision deficiency is a very complex topic, and I could not describe the different causes any better than Wikipedia does, so if you want to learn more, you should check out their [article about color blindness](#).

Dichromacy



Original Color

90, 6.914, 19.811

Protanopia

90, 2.213, 32.813

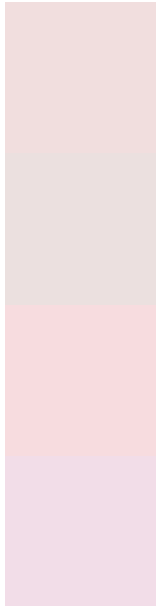
Deuteranopia

90, 11.520, 9.878



Tritanopia
90, 12.084, 333.346

Trichromacy



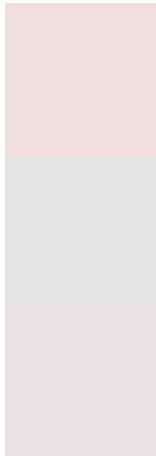
Original Color
90, 6.914, 19.811

Protanomaly
90, 4.006, 26.953

Deuteranomaly
90, 9.975, 11.140

Tritanomaly
90, 9.479, 343.054

Monochromacy



Original Color
90, 6.914, 19.811

Achromatopsia
91, 0.011, 296.813

Achromatomaly
90, 2.515, 19.341

CSS Examples

Text

The CSS property to change the color of the text to CIELCh 90, 6.914, 19.811 is called "color". The color property can be set on classes, ids or directly on the HTML element.

This example shows how text in the color `rgb(241, 222, 222)` looks like.

```
.text, #text, p{  
    color:rgb(241, 222, 222)  
}
```

If you want to add a text shadow in that color use the text-shadow property, you can generate a text shadow directly with our [CSS Text Shadow Generator](#).

Here you see how black text with a 4 pixel rgb(241, 222, 222) colored shadow looks like.

```
.shadow{ text-shadow: 4px 4px 2px rgb(241, 222, 222) }
```

Border

The CSS property to change the border of an element to CIELCh 90, 6.914, 19.811 is called "border". The border property can be set on classes, ids or directly on the HTML element.

This example shows the color as border, it can be applied via the CSS property "border" or "border-color".

```
.border, #border, table{ border:4px solid rgb(241, 222, 222) }
```

If only the border color should be changed use the property `border-color`.

```
.border{ border-color:rgb(241, 222, 222) }
```

If you want to add a box shadow in that color use:

Here you see how a box with a 4 pixel `rgb(241, 222, 222)` colored shadow looks like.

```
.boxshadow{ -moz-box-shadow:4px 4px 4px  
4px rgb(241, 222, 222); -webkit-box-  
shadow:4px 4px 4px 4px rgb(241, 222, 222);  
box-shadow:4px 4px 4px 4px rgb(241, 222,  
222) }
```

Background

The CSS property to change the background color of an element to CIELCh 90, 6.914, 19.811 is called "background". The background property can be set on classes, ids or directly on the HTML element.

```
.background, #background, body{  
background: rgb(241, 222, 222) }
```

If only the background color should be changed can be used:

```
.background{ background-color: rgb(241,  
222, 222) }
```

This example shows the color as background, it is applied via the CSS property "background".

To optimize and compress your CSS code, you can use our [online CSS compressor and optimizer](#) based on csstidy. If you want to create a linear or radial gradient as background or border, check our [CSS Gradient Generator](#).

Hey! You found this booklet interesting? Support Converting Colors with the new Membership Option!

The pro membership hides all ads, plus gives you double the colors in the color bucket, and more awesome pro features!

[Learn more, Memberships starting at \\$2.50/m!](#)

**Follow me
on Twitter!**

@ConvertingColor