

# Converting Colors

CIELCh(90, 74.454, 18.176)

Have a look what the booklet for  
CIELCh(90, 74.454, 18.176) contains.

<b>CIELCh(77, 36.524, 4.412)</b> .....	3
<i><b>Conversions</b></i> .....	4
<i><b>Details</b></i> .....	6
<i><b>Harmonies</b></i> .....	11
<i><b>Previews</b></i> .....	20
<i><b>Color Blindness Simulation</b></i> .....	23
<i><b>CSS Examples</b></i> .....	26

# Color

**CIELCh(77, 36.524, 4.412)**

# Conversions

## Conversions Part 1

Format	Color
Hex	FFA4BA
RGB	255, 164, 186
RGB Percent	100%, 64%, 73%
CMY	0.0000, 0.3557, 0.2695
CMYK	0.00, 0.36, 0.27, 0.00
HSL	345°, 100%, 82%
HSV	345°, 36%, 100%
XYZ	63.5771, 51.5317, 53.2111
YIQ	193.7170, 47.1740, 26.1340

# Conversions

## Conversions Part 2

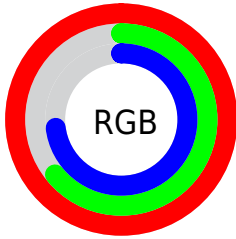
Format	Color
R <sub>Y</sub> B	255, 164, 186
Decimal	16753850
CIE Lab	77.00, 36.42, 2.81
CIE LCh	77, 36.524, 4.412
Yxy	51.5317, 0.3777, 0.3062
Android (android.graphics.Color)	4294943930 (0xFFFFA4BA)
YUV	193.7170, -3.8045, 53.7452
Hunter-Lab	71.7856, 32.4641, 6.3012

# Details

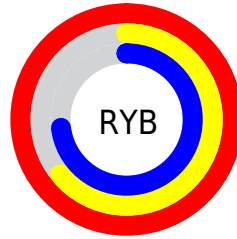
The CIELCh color **77, 36.524, 4.412** is a light color, and the websafe version is hex **FF9999**. A complement of this color would be **94, 31.896, 176.524**, and the grayscale version is **78, 0.009, 296.813**.

A 20% lighter version of the original color is **91, 16.902, 338.334**, and **57, 36.269, 4.380** is the 20% darker color. If you saturate the color by 10%, you get **71, 47.150, 6.159**, and if you desaturate by 10%, it is **83, 25.723, 2.850**.

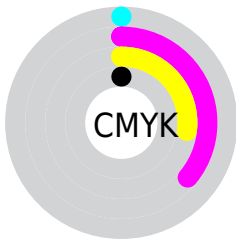
# Distribution



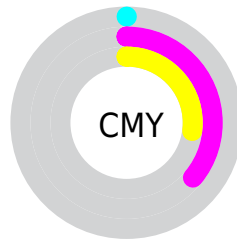
- Red (100%)
- Green (64%)
- Blue (73%)



- Red (100%)
- Yellow (64%)
- Blue (73%)



- Cyan (0%)
- Magenta (36%)
- Yellow (27%)
- Black (0%)



- Cyan (0%)
- Magenta (36%)
- Yellow (27%)

# Brightness & Saturation Gradients

These gradients show how the CIELCh color 77, 36.524, 4.412 changes by changing the brightness by 10 percent. The first figure shows a shift by +10% for each color and the second figure -10%.

Similar to the brightness gradients but the following saturation gradients show a change of the CIELCh color 77, 36.524, 4.412 by changing the saturation by 10% instead.



 77, 36.524, 4.412       77, 36.524, 4.412

 100, 36.524, 4.412       67, 36.524, 4.412

 97, 36.524, 4.412       57, 36.524, 4.412

 47, 36.524, 4.412

 37, 36.524, 4.412

 27, 36.524, 4.412

 17, 36.524, 4.412

 7, 36.524, 4.412

 0, 36.524, 4.412

 77, 36.524, 4.412       77, 36.524, 4.412

71, 47.150, 6.159

83, 25.723, 2.850

66, 57.611, 8.430

90, 15.330, 1.600

61, 67.346, 11.305

96, 5.357, 0.479

58, 75.916, 14.952

100, 0.012,  
296.813

55, 83.065, 19.494

54, 88.902, 24.867

54, 91.312, 27.319

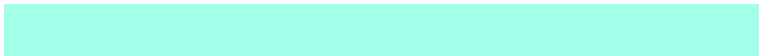
# Harmonies

# Complementary

The Complementary color scheme is a pair of colors which are on the opposite of each other on the color wheel.



77, 36.524, 4.412



94, 31.896, 176.524

# Rectangle

The Rectangle color scheme consists of four colors that form a rectangle on the color wheel.



77, 36.524, 4.412



77, 36.524, 54.412



77, 36.524, 184.412



77, 36.524, 234.412

# Sweetspot

The Sweet Spot groups the original color and five complimentary colors.



77, 36.406, 4.339



93, 10.715, 1.084



77, 53.492, 318.841



48, 7.223, 1.235



0, 0.000, 0.000



53, 0.007, 296.813



# Same Dimension

The Same Dimension uses a secret algorithm to generate beautiful new colors.



77, 36.406, 4.339



73, 44.399, 5.653



82, 30.278, 44.301



50, 5.519, 0.919



40, 72.953, 26.247



10, 31.741, 16.433





# Inverse Universe

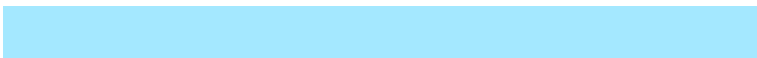
The Inverse Universe completely reimagines the original color for something new.



77, 36.406, 4.339



73, 44.399, 5.653



88, 23.755, 228.317



50, 5.519, 0.919



40, 72.953, 26.247

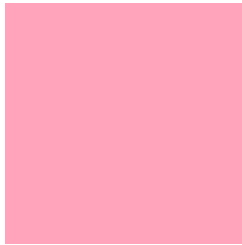


10, 31.741, 16.433



# Previews

## White Background



This preview shows how the CIELCh color 77, 36.524, 4.412 looks on a white background.

## Color Contrast Check

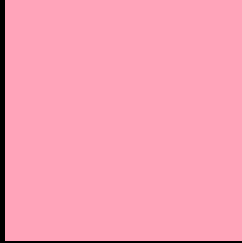
Large Text (above 18pt) WCAG AA × Fail

Any Text WCAG AA × Fail

Large Text (above 18pt) WCAG AAA × Fail

Any Text WCAG AAA × Fail

# Black Background



This preview shows how the CIELCh color 77, 36.524, 4.412 looks on a black background.

## Color Contrast Check

Large Text (above 18pt) WCAG AA ✓ Pass

Any Text WCAG AA ✓ Pass

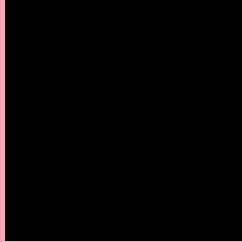
Large Text (above 18pt) WCAG AAA ✓ Pass

Any Text WCAG AAA ✓ Pass

If you want to check with other color combinations, try the [Color Contrast Checker](#).

**CIELCh 77, 36.524, 4.412**

## **Background**



This preview shows how black text looks on a background with the CIELCh color 77, 36.524, 4.412.



This preview shows how white text looks on a background with the CIELCh color 77, 36.524, 4.412.

# Color Blindness Simulation

Color vision deficiency is a very complex topic, and I could not describe the different causes any better than Wikipedia does, so if you want to learn more, you should check out their [article about color blindness](#).

## Dichromacy

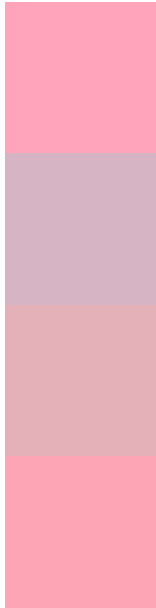




**Tritanopia**  
77, 34.754, 12.196



# Trichromacy



**Original Color**  
77, 36.524, 4.412

**Protanomaly**  
77, 15.291, 346.650

**Deuteranomaly**  
77, 19.892, 10.365

**Tritanomaly**  
77, 35.310, 8.953

# Monochromacy



**Original Color**  
77, 36.524, 4.412

**Achromatopsia**  
78, 0.009, 296.813

**Achromatomaly**  
77, 13.134, 1.554

# CSS Examples

## Text

The CSS property to change the color of the text to CIELCh 77, 36.524, 4.412 is called "color". The color property can be set on classes, ids or directly on the HTML element.

This example shows how text in the color `rgb(255, 164, 186)` looks like.

```
.text, #text, p{  
    color:rgb(255, 164, 186)  
}
```

If you want to add a text shadow in that color use the text-shadow property, you can generate a text shadow directly with our [CSS Text Shadow Generator](#).

Here you see how black text with a 4 pixel rgb(255, 164, 186) colored shadow looks like.

```
.shadow{ text-shadow: 4px 4px 2px rgb(255, 164, 186) }
```

## Border

The CSS property to change the border of an element to CIELCh 77, 36.524, 4.412 is called "border". The border property can be set on classes, ids or directly on the HTML element.

This example shows the color as border, it can be applied via the CSS property "border" or "border-color".

```
.border, #border, table{ border:4px solid rgb(255, 164, 186) }
```

If only the border color should be changed use the property `border-color`.

```
.border{ border-color:rgb(255, 164, 186) }
```

If you want to add a box shadow in that color use:

Here you see how a box with a 4 pixel `rgb(255, 164, 186)` colored shadow looks like.

```
.boxshadow{ -moz-box-shadow:4px 4px 4px  
4px rgb(255, 164, 186); -webkit-box-  
shadow:4px 4px 4px 4px rgb(255, 164, 186);  
box-shadow:4px 4px 4px 4px rgb(255, 164,  
186) }
```

# Background

The CSS property to change the background color of an element to CIELCh 77, 36.524, 4.412 is called "background". The background property can be set on classes, ids or directly on the HTML element.

```
.background, #background, body{  
background: rgb(255, 164, 186) }
```

If only the background color should be changed can be used:

```
.background{ background-color: rgb(255,  
164, 186) }
```

This example shows the color as background, it is applied via the CSS property "background".

To optimize and compress your CSS code, you can use our [online CSS compressor and optimizer](#) based on csstidy. If you want to create a linear or radial gradient as background or border, check our [CSS Gradient Generator](#).

Hey! You found this booklet interesting? Support Converting Colors with the new Membership Option!

The pro membership hides all ads, plus gives you double the colors in the color bucket, and more awesome pro features!

**[Learn more, Memberships starting at \\$2.50/m!](#)**

**Follow me  
on Twitter!**

@ConvertingColor