

Converting Colors

CIELCh(99, 121.636, 306.744)

Have a look what the booklet for
CIELCh(99, 121.636, 306.744)
contains.

CIELCh(88, 30.725, 325.494)	3
<i>Conversions</i>	4
<i>Details</i>	6
<i>Harmonies</i>	12
<i>Previews</i>	21
<i>Color Blindness Simulation</i>	24
<i>CSS Examples</i>	27

Color

CIELCh(88, 30.725, 325.494)

Conversions

Conversions Part 1

Format	Color
Hex	FECDFE
RGB	254, 205, 254
RGB Percent	100%, 80%, 100%
CMY	0.0031, 0.1951, 0.0030
CMYK	0.00, 0.19, 0.00, 0.00
HSL	300°, 97%, 90%
HSV	300°, 19%, 100%
XYZ	80.7701, 72.0653, 103.6067
YIQ	225.2370, 13.4750, 25.6270

Conversions

Conversions Part 2

Format	Color
R_{YB}	254, 205, 254
Decimal	16698878
CIE Lab	88.00, 25.32, -17.41
CIE LCh	88, 30.725, 325.494
Yxy	72.0653, 0.3150, 0.2810
Android (android.graphics.Color)	4294888958 (0xFFFECDFE)
YUV	225.2370, 14.1802, 25.2252
Hunter-Lab	84.8913, 21.2747, -12.9374

Details

The CIELCh color **88, 30.725, 325.494** is a light color, and the websafe version is hex **FFCCFF**. A complement of this color would be **95, 30.700, 143.202**, and the grayscale version is **90, 0.011, 296.813**.

A 20% lighter version of the original color is **100, 0.012, 296.813**, and **68, 30.944, 325.730** is the 20% darker color. If you saturate the color by 10%, you get **82, 46.614, 326.039**, and if you desaturate by 10%, it is **94, 14.715, 324.931**.

Distribution



- Red (100%)
- Green (80%)
- Blue (100%)



- Red (100%)
- Yellow (80%)
- Blue (100%)



- Cyan (0%)
- Magenta (19%)
- Yellow (0%)
- Black (0%)



- Cyan (0%)
- Magenta (20%)
- Yellow (0%)


Brightness & Saturation Gradients

These gradients show how the CIELCh color 88, 30.725, 325.494 changes by changing the brightness by 10 percent. The first figure shows a shift by +10% for each color and the second figure -10%.

Similar to the brightness gradients but the following saturation gradients show a change of the CIELCh color 88, 30.725, 325.494 by changing the saturation by 10% instead.

 88, 30.725,
325.494

 88, 30.725,
325.494

 100, 30.725,
325.494

 78, 30.725,
325.494

 68, 30.725,
325.494

 58, 30.725,
325.494

 48, 30.725,
325.494

 38, 30.725,
325.494

 28, 30.725,
325.494

 18, 30.725,

325.494

■ 8, 30.725, 325.494

■ 0, 30.725, 325.494

■ 88, 30.725,
325.494

■ 88, 30.725,
325.494

■ 82, 46.614,
326.039

■ 94, 14.715,
324.931

■ 77, 62.024,
326.555

100, 0.470,
145.079

■ 72, 76.462,
327.027

100, 0.470,
145.010

■ 68, 89.335,
327.437

100, 0.469,
144.942

■ 65, 100.014,

100, 0.469,

327.769

144.873

■ 62, 107.965,
328.011

100, 0.468,
144.804

■ 61, 112.921,
328.159

100, 0.468,
144.735

■ 60, 115.178,
328.226

100, 0.468,
144.666

■ 60, 115.301,
328.229

100, 0.467,
144.597

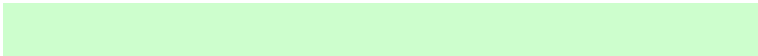
Harmonies

Complementary

The Complementary color scheme is a pair of colors which are on the opposite of each other on the color wheel.



88, 30.725, 325.494



95, 30.700, 143.202

Rectangle

The Rectangle color scheme consists of four colors that form a rectangle on the color wheel.



88, 30.725, 325.494



88, 30.725, 15.494



88, 30.725, 145.494



88, 30.725, 195.494

Sweetspot

The Sweet Spot groups the original color and five complimentary colors.



88, 30.722, 325.494



96, 9.538, 324.739



84, 25.416, 291.720



51, 6.329, 324.778



0, 0.000, 0.000



53, 0.007, 296.813

Same Dimension

The Same Dimension uses a secret algorithm to generate beautiful new colors.



88, 30.722, 325.494



86, 36.784, 325.700



87, 22.032, 344.425



50, 9.057, 324.945



45, 93.083, 328.229



12, 42.823, 328.230

Inverse Universe

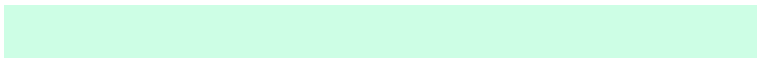
The Inverse Universe completely reimagines the original color for something new.



87, 18.458, 20.775



84, 22.421, 21.146



96, 21.542, 161.095



49, 5.254, 19.937



40, 84.226, 39.997



10, 33.367, 27.173

Previews

White Background



This preview shows how the CIELCh color 88, 30.725, 325.494 looks on a white background.

Color Contrast Check

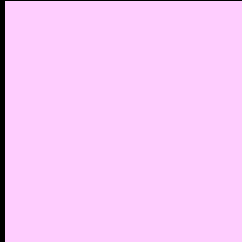
Large Text (above 18pt) WCAG AA × Fail

Any Text WCAG AA × Fail

Large Text (above 18pt) WCAG AAA × Fail

Any Text WCAG AAA × Fail

Black Background



This preview shows how the CIELCh color 88, 30.725, 325.494 looks on a black background.

Color Contrast Check

Large Text (above 18pt) WCAG AA ✓ Pass

Any Text WCAG AA ✓ Pass

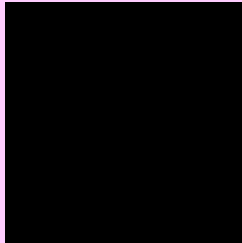
Large Text (above 18pt) WCAG AAA ✓ Pass

Any Text WCAG AAA ✓ Pass

If you want to check with other color combinations, try the [Color Contrast Checker](#).

CIELCh 88, 30.725, 325.494

Background



This preview shows how black text looks on a background with the CIELCh color 88, 30.725, 325.494.



This preview shows how white text looks on a background with the CIELCh color 88, 30.725, 325.494.

Color Blindness Simulation

Color vision deficiency is a very complex topic, and I could not describe the different causes any better than Wikipedia does, so if you want to learn more, you should check out their [article about color blindness](#).

Dichromacy



Original Color

88, 30.748, 325.498

Protanopia

88, 18.849, 286.655

Deuteranopia

88, 19.929, 304.549



Tritanopia
88, 16.993, 349.368

Trichromacy



Original Color
88, 30.748, 325.498



Protanomaly
88, 22.132, 305.150



Deuteranomaly
88, 23.948, 314.598

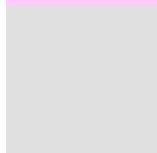


Tritanomaly
88, 21.810, 337.258

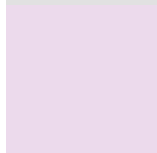
Monochromacy



Original Color
88, 30.748, 325.498



Achromatopsia
90, 0.011, 296.813



Achromatomaly
89, 11.398, 324.836

CSS Examples

Text

The CSS property to change the color of the text to CIELCh 88, 30.725, 325.494 is called "color". The color property can be set on classes, ids or directly on the HTML element.

This example shows how text in the color `rgb(254, 205, 254)` looks like.

```
.text, #text, p{  
    color:rgb(254, 205, 254)  
}
```

If you want to add a text shadow in that color use the text-shadow property, you can generate a text shadow directly with our [CSS Text Shadow Generator](#).

Here you see how black text with a 4 pixel rgb(254, 205, 254) colored shadow looks like.

```
.shadow{ text-shadow: 4px 4px 2px rgb(254, 205, 254) }
```

Border

The CSS property to change the border of an element to CIELCh 88, 30.725, 325.494 is called "border". The border property can be set on classes, ids or directly on the HTML element.

This example shows the color as border, it can be applied via the CSS property "border" or "border-color".

```
.border, #border, table{ border:4px solid rgb(254, 205, 254) }
```

If only the border color should be changed use the property `border-color`.

```
.border{ border-color:rgb(254, 205, 254) }
```

If you want to add a box shadow in that color use:

Here you see how a box with a 4 pixel `rgb(254, 205, 254)` colored shadow looks like.

```
.boxshadow{ -moz-box-shadow:4px 4px 4px  
4px rgb(254, 205, 254); -webkit-box-  
shadow:4px 4px 4px 4px rgb(254, 205, 254);  
box-shadow:4px 4px 4px 4px rgb(254, 205,  
254) }
```

Background

The CSS property to change the background color of an element to CIELCh 88, 30.725, 325.494 is called "background". The background property can be set on classes, ids or directly on the HTML element.

```
.background, #background, body{  
background: rgb(254, 205, 254) }
```

If only the background color should be changed can be used:

```
.background{ background-color: rgb(254,  
205, 254) }
```

This example shows the color as background, it is applied via the CSS property "background".

To optimize and compress your CSS code, you can use our [online CSS compressor and optimizer](#) based on csstidy. If you want to create a linear or radial gradient as background or border, check our [CSS Gradient Generator](#).

Hey! You found this booklet interesting? Support Converting Colors with the new Membership Option!

The pro membership hides all ads, plus gives you double the colors in the color bucket, and more awesome pro features!

[Learn more, Memberships starting at \\$2.50/m!](#)

**Follow me
on Twitter!**

@ConvertingColor